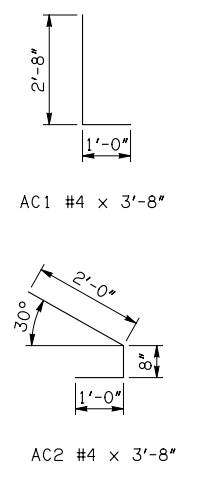


**APRON BAR LIST**

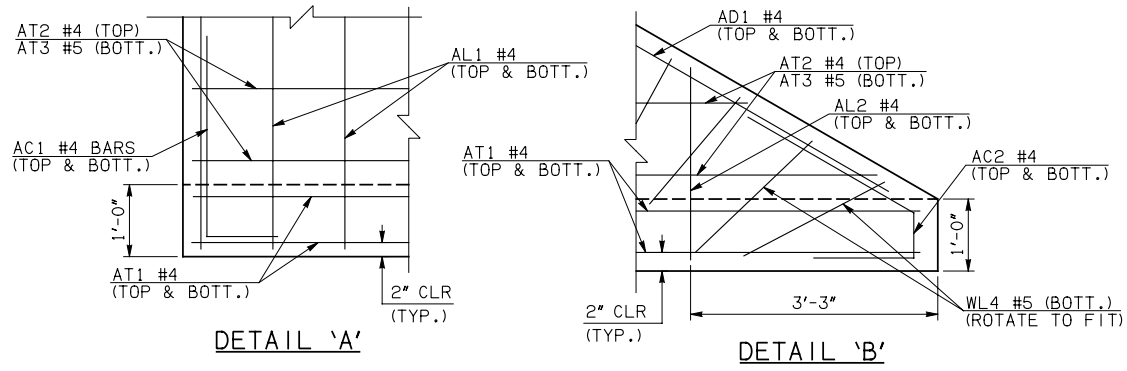
MARK	SIZE	FORM	ONE APRON SHOWN											
			12' SPAN		14' SPAN		16' SPAN		18' SPAN		20' SPAN			
QTY.	LENGTH	REMARKS	QTY.	LENGTH	REMARKS	QTY.	LENGTH	REMARKS	QTY.	LENGTH	REMARKS	QTY.	LENGTH	REMARKS
AC1	#4	BNT	2	3'-8"		2	3'-8"		2	3'-8"		2	3'-8"	
AC2	#4	BNT	2	3'-8"		2	3'-8"		2	3'-8"		2	3'-8"	
AD1	#4	STR	2	78'-0"		2	78'-0"		2	78'-0"		2	78'-0"	
AL1	#4	STR	90	40'-9"		104	40'-9"		118	40'-9"		132	40'-9"	
AL2	#4	STR	124	20'-1" AVG.	2'-6" TO 37'-8"	124	20'-1" AVG.	2'-6" TO 37'-8"	124	20'-1" AVG.	2'-6" TO 37'-8"	124	20'-1" AVG.	2'-6" TO 37'-8"
AL3	#4	STR	4	38'-9"		4	38'-9"		4	38'-9"		4	38'-9"	
AT1	#4	STR	4	112'-11"	①	4	119'-11"	①	4	129'-4"	②	4	136'-3"	②
AT2	#4	STR	29	88'-0" AVG.	① 63'-9" TO 112'-3"	33	91'-5 1/2" AVG.	① 63'-9" TO 119'-2"	4	125'-11 1/2" AVG.	② 123'-4" TO 128'-7"	8	129'-5" AVG.	② 123'-4" TO 135'-6"
AT3	#5	STR	29	88'-0" AVG.	① 63'-9" TO 112'-3"	33	91'-5 1/2" AVG.	① 63'-9" TO 119'-2"	4	125'-11 1/2" AVG.	② 123'-4" TO 128'-7"	8	129'-5" AVG.	② 123'-4" TO 135'-6"
AT4	#4	STR	9	52'-7" AVG.	45'-8" TO 59'-6"	5	56'-0 1/2" AVG.	52'-7" TO 59'-6"	34	90'-7" AVG.	① 62'-0" TO 119'-2"	30	94'-0 1/2" AVG.	① 68'-11" TO 119'-2"
AT5	#5	STR	9	52'-7" AVG.	45'-8" TO 59'-6"	5	56'-0 1/2" AVG.	52'-7" TO 59'-6"	34	90'-7" AVG.	① 62'-0" TO 119'-2"	30	94'-0 1/2" AVG.	① 68'-11" TO 119'-2"



- ① INCLUDES 2'-6" LAP
  - ② INCLUDES TWO 2'-6" LAPS
  - ③ QUANTITY SHOWN REPRESENTS TWO SETS.
- NOTE: SEE END SECTION DETAILS SHEET NO. 2 OF 3 FOR VARIABLE REINFORCING QUANTITIES.

**END SECTION VARIABLE DIMENSIONS**

SPAN	W	A	B	C	CW	D	E	F	G	H	LW	R	SW
12'	12"	14'-0"	2'-5 1/2"	3'-3 1/4"	110'-10"	3'-6 1/4"	25'-6 1/2"	26'-2 1/2"	26'-5 3/4"	46'-9 1/4"	74'-8 3/4"	40'-0"	38'-2 3/4"
14'	12"	16'-0"	2'-8 3/4"	3'-6 1/4"	117'-9"	3'-9 1/2"	29'-3 1/4"	29'-11 1/4"	30'-2 1/2"	53'-8 1/4"	74'-8 3/4"	46'-0"	38'-2 3/4"
16'	13"	18'-0"	2'-11 1/4"	3'-11 1/4"	124'-8 1/4"	4'-0 3/4"	33'-0 3/4"	33'-9 3/4"	33'-11 1/4"	60'-9 3/4"	74'-6 3/4"	52'-2"	38'-0 3/4"
18'	14"	19'-0"	2'-2"	3'-4 1/4"	131'-7 1/2"	3'-4"	35'-10"	36'-8 1/4"	36'-8"	67'-11 1/4"	74'-4 3/4"	58'-4"	37'-10 3/4"
20'	15"	21'-0"	2'-4 1/2"	3'-9 1/4"	138'-6 1/2"	3'-7 1/4"	39'-7 1/2"	40'-6 3/4"	40'-4 3/4"	75'-0 3/4"	74'-2 3/4"	64'-6"	37'-8 3/4"



APPROVED BY BRIDGE ENGINEER *Robert J. Nisch* DATE 4/09/09

**OKLAHOMA DEPT. OF TRANSPORTATION**  
**BRIDGE STANDARD (ENGLISH)**  
 RCB CULVERTS - END SECTION DETAILS  
 TRIPLE CELL - 11'-0" HEIGHT - 30°  
 SHEET NO. 1 OF 3

1999 SPECIFICATIONS | RCB-E3-H11-30-1 | OOE | B-771E