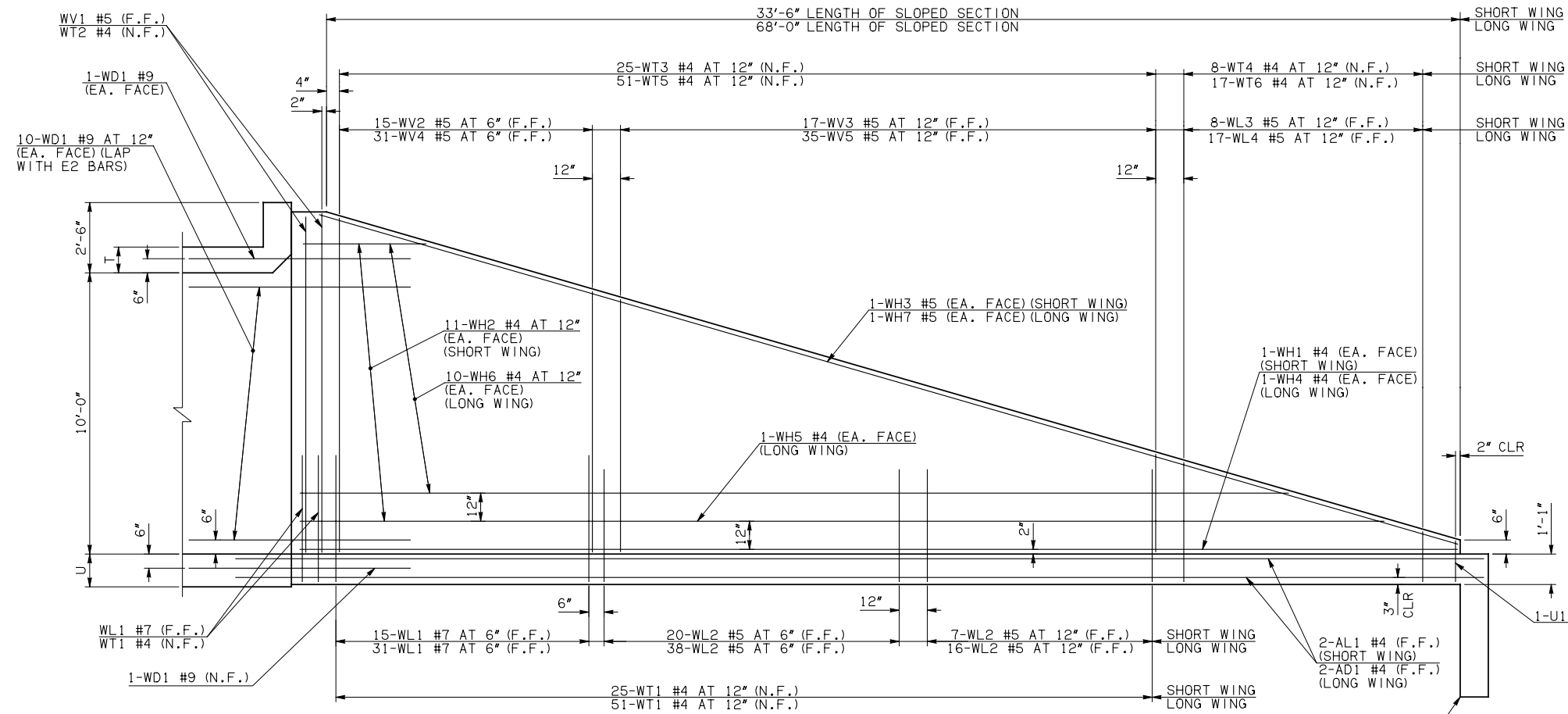
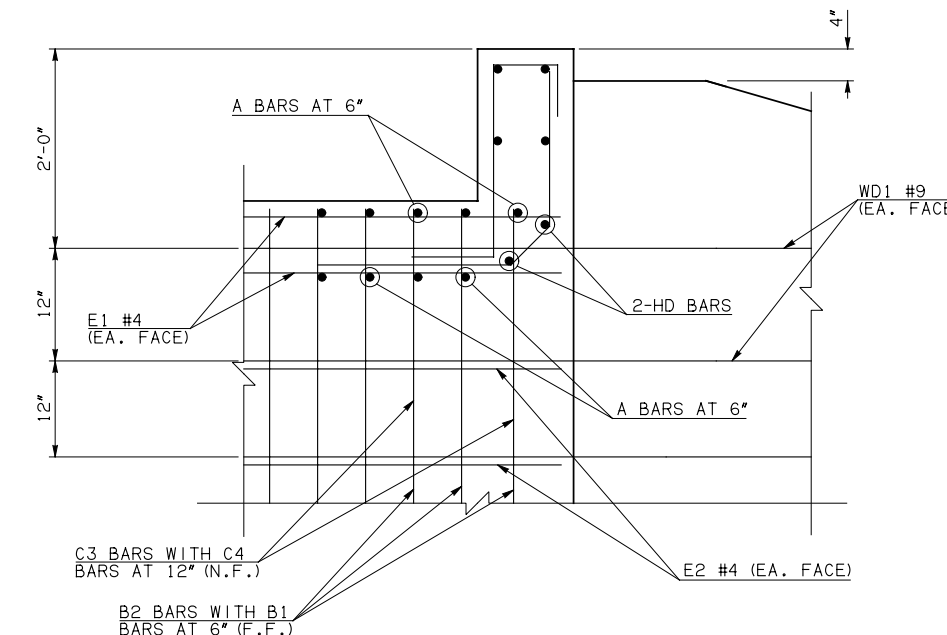


DESCRIPTION	REVISIONS	DATE

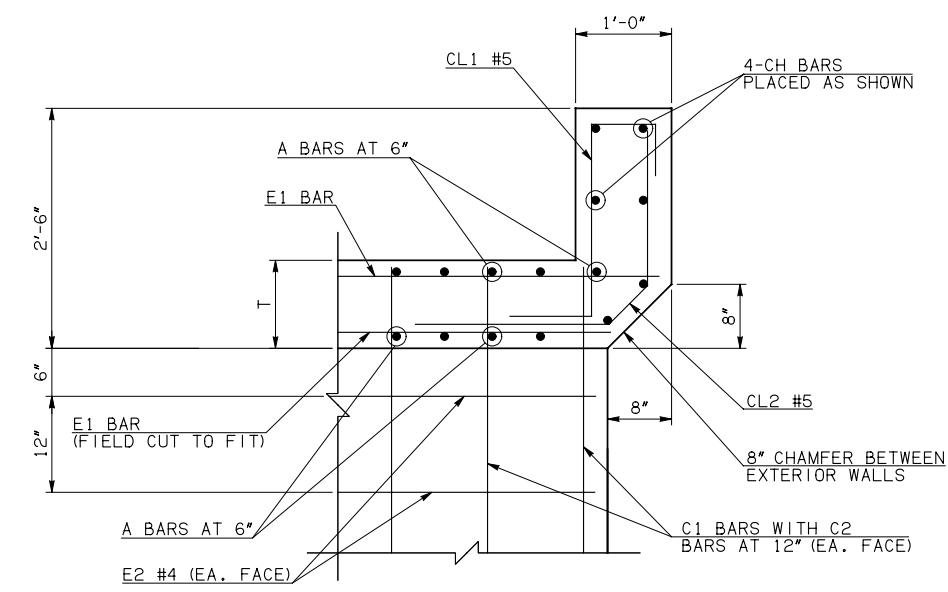


NOTE: F.F. = FAR FACE
N.F. = NEAR FACE

WING ELEVATION



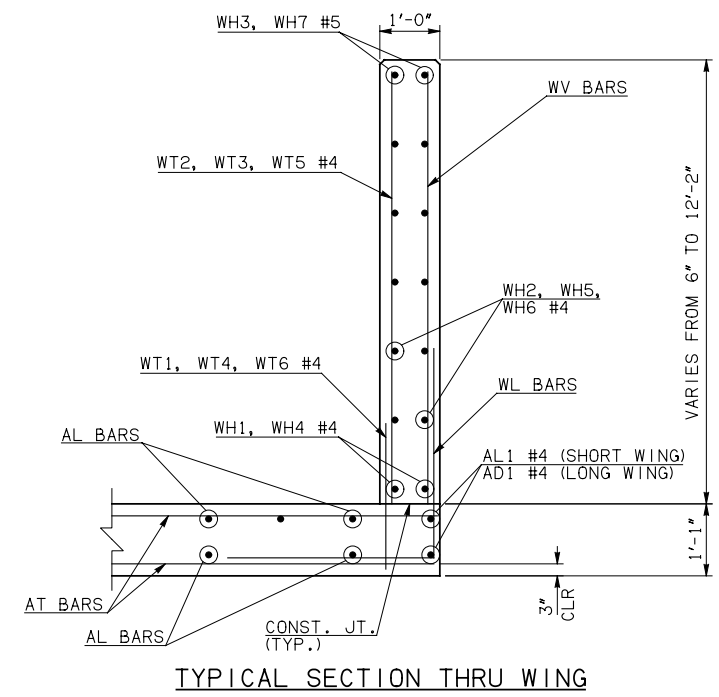
④ HEADWALL DETAIL AT EXTERIOR WALL



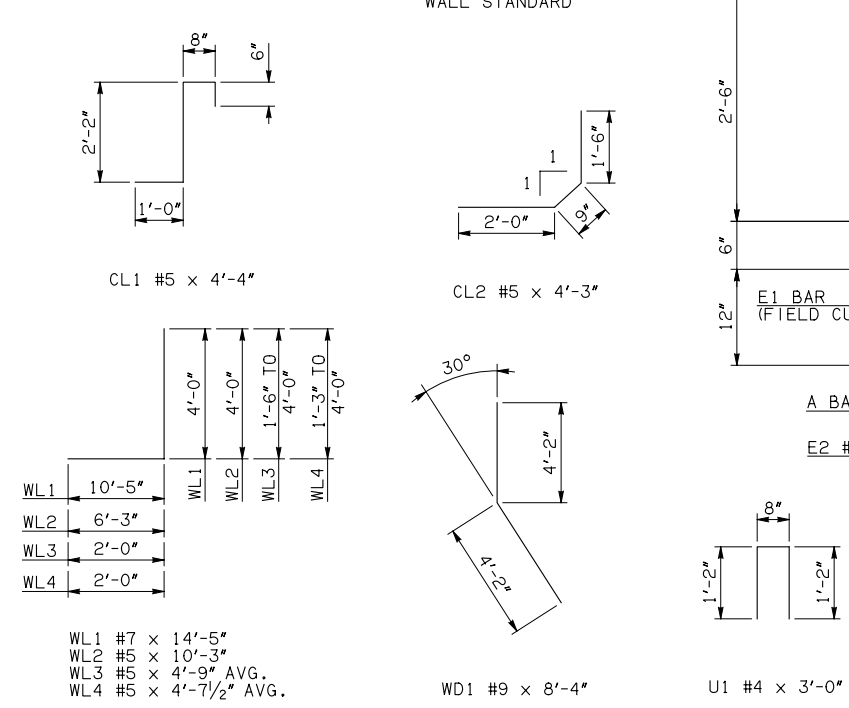
HEADWALL DETAIL AT INTERIOR WALL
DIMENSION SHOWN NORMAL TO HEADWALL

- NOTES:
- ① INCLUDES 2'-6" LAP
 - ③ QUANTITY SHOWN REPRESENTS TWO SETS.
 - ④ FOR FURTHER INFORMATION REGARDING END SECTION BARS A, B, C, E1, AND E2, REFER TO RCB CULVERT - BARREL DETAILS.
 - ⑤ INCLUDES 5'-10" LAP.

WINGWALL BAR LIST (LONG AND SHORT WING INCLUDED)					
MARK	SIZE	QTY.	FORM	LENGTH	REMARKS
WD1	#9	46	BNT	8'-4"	
WH1	#4	2	STR	34'-4"	
WH2	#4	22	STR	17'-7 1/2" AVG.	3'-3" TO 32'-0"
WH3	#5	2	STR	35'-3"	
WH4	#4	2	STR	71'-4"	
WH5	#4	2	STR	66'-7"	
WH6	#4	20	STR	32'-0" AVG.	5'-9" TO 58'-3"
WH7	#5	2	STR	71'-3"	
WL1	#7	50	BNT	14'-5"	
WL2	#5	81	BNT	10'-3"	
WL3	#5	8	BNT	4'-9" AVG.	3'-6" TO 6'-0"
WL4	#5	17	BNT	4'-7 1/2" AVG.	3'-3" TO 6'-0"
WT1	#4	81	STR	2'-10"	
WT2	#4	5	STR	12'-0"	
WT3	#4	25	STR	7'-8" AVG.	3'-6" TO 11'-10"
WT4	#4	8	STR	2'-9" AVG.	1'-6" TO 4'-0"
WT5	#4	51	STR	7'-7 1/2" AVG.	3'-4" TO 11'-11"
WT6	#4	17	STR	2'-7 1/2" AVG.	1'-3" TO 4'-0"
WV1	#5	4	STR	12'-0"	
WV2	#5	15	STR	10'-7 1/2" AVG.	9'-5" TO 11'-10"
WV3	#5	17	STR	6'-3 1/2" AVG.	3'-6" TO 9'-1"
WV4	#5	31	STR	10'-7 1/2" AVG.	9'-4" TO 11'-11"
WV5	#5	35	STR	6'-3"	3'-4" TO 9'-2"
U1	#4	2	BNT	3'-0"	



TYPICAL SECTION THRU WING



HEADWALL BAR LIST																			
ONE HEADWALL SHOWN																			
MARK	FORM	10' SPAN			12' SPAN			14' SPAN			16' SPAN			18' SPAN			20' SPAN		
		SIZE	QTY.	LENGTH	SIZE	QTY.	LENGTH	SIZE	QTY.	LENGTH	SIZE	QTY.	LENGTH	SIZE	QTY.	LENGTH	SIZE	QTY.	LENGTH
CH	STR	#6	4	39'-6"	#6	4	46'-5"	#6	4	53'-4"	#8	4	66'-3" ⑤	#8	4	73'-5" ⑤	#8	4	80'-6" ⑤
CL1	BNT	#5	40	4'-4"	#5	47	4'-4"	#5	54	4'-4"	#5	61	4'-4"	#5	68	4'-4"	#5	75	4'-4"
CL2	BNT	#5	40	4'-3"	#5	47	4'-3"	#5	54	4'-3"	#5	61	4'-3"	#5	68	4'-3"	#5	75	4'-3"
HD	STR	#8	2	39'-6"	#8	2	46'-5"	#8	2	53'-4"	#9	2	66'-3" ⑤	#9	2	73'-5" ⑤	#9	2	80'-6" ⑤

APPROVED BY BRIDGE ENGINEER *Robert J. Nisch* DATE 4/09/09

OKLAHOMA DEPT. OF TRANSPORTATION
BRIDGE STANDARD (ENGLISH)
RCB CULVERTS - END SECTION DETAILS
TRIPLE CELL - 10'-0" HEIGHT - 30°
 SHEET NO. 3 OF 3

1999 SPECIFICATIONS RCB-E3-H10-30-3 OOE B-770E