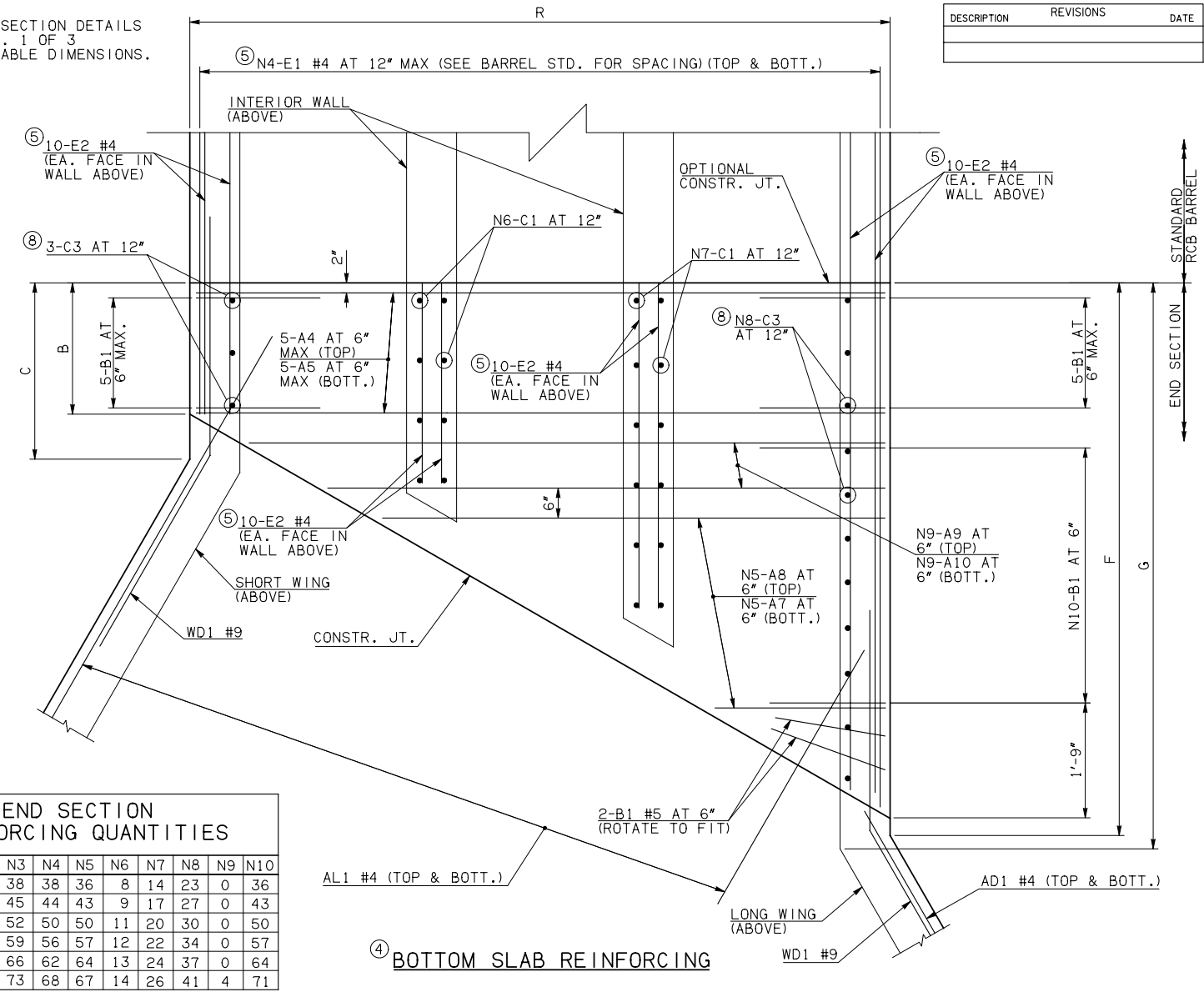
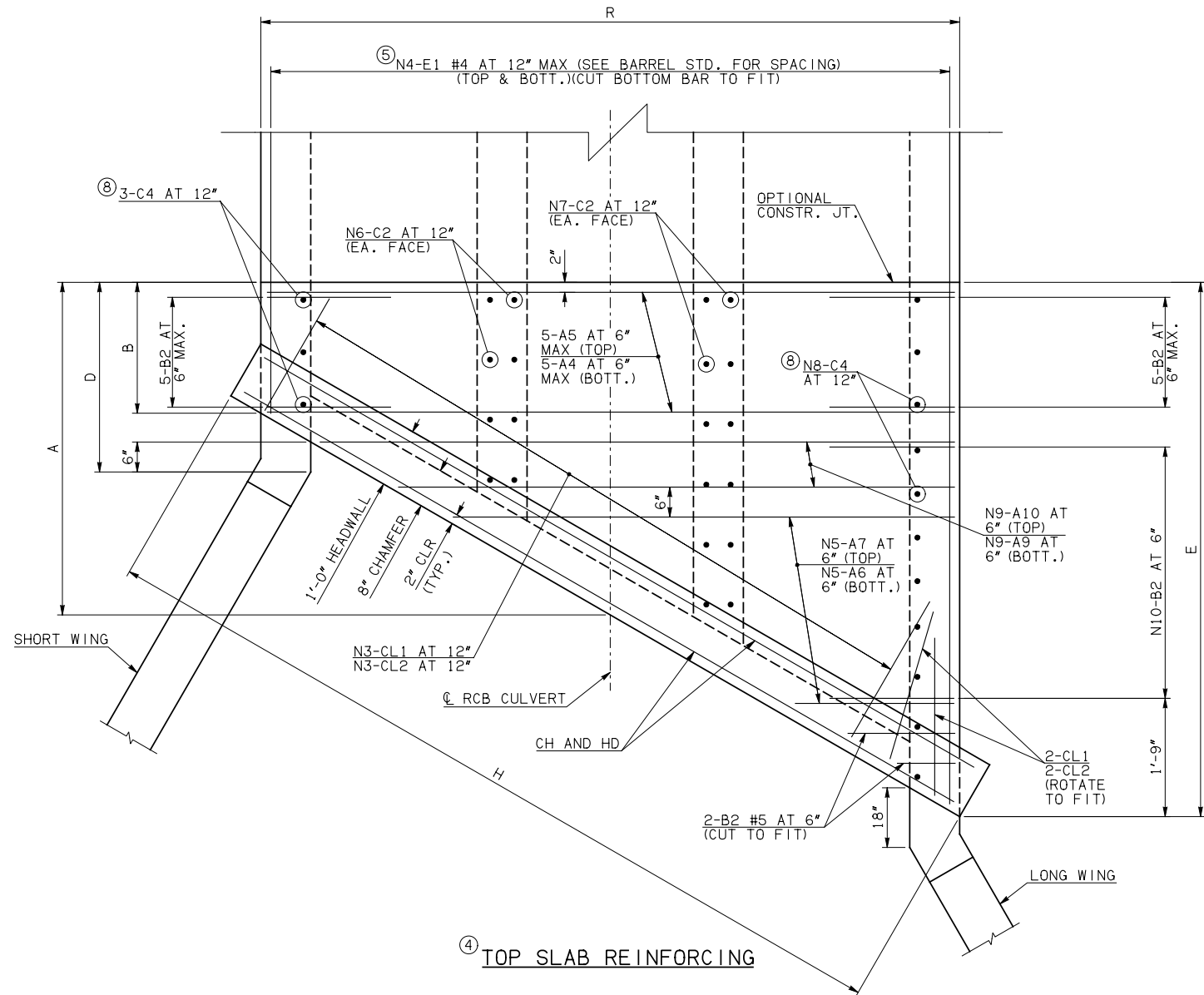


DESCRIPTION	REVISIONS	DATE

NOTE: SEE END SECTION DETAILS SHEET NO. 1 OF 3 FOR VARIABLE DIMENSIONS.



END SECTION REINFORCING QUANTITIES

SPAN	N1	N2	N3	N4	N5	N6	N7	N8	N9	N10
10'	22	13	38	38	36	8	14	23	0	36
12'	26	9	45	44	43	9	17	27	0	43
14'	30	5	52	50	50	11	20	30	0	50
16'	1	34	59	56	57	12	22	34	0	57
18'	5	30	66	62	64	13	24	37	0	64
20'	9	26	73	68	67	14	26	41	4	71

END CONNECTION BAR LIST
(VARIABLE QUANTITIES AND LENGTHS)

MARK	FORM	10' SPAN		12' SPAN		14' SPAN		16' SPAN		18' SPAN		20' SPAN														
		SIZE	QTY.	LENGTH	REMARKS	SIZE	QTY.	LENGTH	REMARKS	SIZE	QTY.	LENGTH	REMARKS													
A4	STR	#5	10	33'-8"		#6	10	39'-8"		#7	10	45'-10"		#8	10	58'-0"		#9	10	70'-0"	⑨					
A5	STR	#7	10	33'-8"		#8	10	39'-8"		#8	10	51'-10"		#9	10	58'-0"		#9	10	70'-0"	⑨					
A6	STR	#7	36	16'-6" AVG.	1'-4" TO 31'-8"	#7	43	19'-6 1/2" AVG.	1'-4" TO 37'-9"	#7	50	22'-6 1/2" AVG.	1'-4" TO 43'-9"	#8	57	25'-7" AVG.	1'-4" TO 49'-10"	#9	64	28'-7 1/2" AVG.	1'-4" TO 55'-11"	#9	67	29'-11" AVG.	1'-4" TO 58'-6"	
A7	STR	#8	72	17'-8" AVG.	2'-6" TO 32'-10"	#9	86	20'-8" AVG.	2'-6" TO 38'-10"	#9	100	23'-8 1/2" AVG.	2'-6" TO 44'-11"	#9	114	26'-9" AVG.	2'-6" TO 51'-0"	#10	128	29'-9 1/2" AVG.	2'-6" TO 57'-1"	#10	134	31'-1" AVG.	2'-6" TO 59'-8"	
A8	STR	#7	36	17'-8" AVG.	2'-6" TO 32'-10"	#7	43	20'-8" AVG.	2'-6" TO 38'-10"	#7	50	23'-8 1/2" AVG.	2'-6" TO 44'-11"	#8	57	26'-9" AVG.	2'-6" TO 51'-0"	#9	64	29'-9 1/2" AVG.	2'-6" TO 57'-1"	#9	67	31'-1" AVG.	2'-6" TO 59'-8"	
A9	STR		0				0				0				0							#10	8	67'-7 1/2" AVG.	66'-4" TO 68'-11"	⑨
A10	STR		0				0				0				0							#9	8	67'-7 1/2" AVG.	66'-4" TO 68'-11"	⑨
B1	BNT	#5	48	5'-1"		#6	55	5'-8"		#6	62	5'-2"		#6	69	5'-7"		#6	76	6'-2"		#6	83	6'-7"		
B2	BNT	#5	48	13'-5"		#6	55	13'-8"		#6	62	13'-1"		#6	69	13'-6"		#6	76	14'-1"		#6	83	14'-6"		
C1	STR	#4	44	2'-2"		#4	52	2'-3"		#4	62	2'-4"		#4	68	2'-5"		#4	74	2'-6"		#4	80	2'-8"		
C2	STR	#4	44	10'-10"		#4	52	10'-11"		#4	62	11'-0"		#4	68	11'-1"		#4	74	11'-2"		#4	80	11'-4"		
C3	STR	#5	26	2'-6"		#5	30	2'-7"		#5	37	2'-8"		#5	44	2'-9"		#4	40	2'-6"		#4	44	2'-8"		
C4	STR	#5	26	10'-10"		#5	30	10'-11"		#5	33	11'-0"		#5	37	11'-1"		#4	40	11'-2"		#4	44	11'-4"		
E1	STR	#4	152	11'-9 1/2" AVG.	2'-1" TO 21'-6"	#4	176	13'-9 1/2" AVG.	2'-4" TO 25'-3"	#4	200	15'-9" AVG.	2'-7" TO 28'-11"	#4	224	17'-9 1/2" AVG.	2'-10" TO 32'-9"	#4	248	18'-9" AVG.	2'-0" TO 35'-6"	#4	272	20'-9" AVG.	2'-3" TO 39'-3"	
E2	STR	#4	80	11'-2 1/2" AVG.	2'-1", 7'-8", 14'-0", 21'-1"	#4	80	13'-2 1/2" AVG.	2'-4", 9'-1", 16'-7", 24'-10"	#4	80	15'-2 1/2" AVG.	2'-7", 10'-6", 19'-2", 28'-7"	#4	80	17'-2 1/2" AVG.	2'-10", 11'-11", 21'-9", 32'-4"	#4	80	18'-2" AVG.	2'-0", 12'-4", 23'-3", 35'-0"	#4	80	20'-2" AVG.	2'-3", 13'-9", 25'-10", 38'-9"	

QUANTITIES

ITEM	UNIT	10' SPAN	12' SPAN	14' SPAN	16' SPAN	18' SPAN	20' SPAN
CLASS AA CONCRETE	CY	175.90	204.30	236.60	274.80	310.70	366.80
REINFORCING STEEL	LB	25660.00	32220.00	37700.00	46050.00	59630.00	69420.00

NOTE: QUANTITIES ABOVE ARE FOR ONE END SECTION, WHICH IS COMPRISED OF ONE END CONNECTION, ONE APRON, AND TWO WINGWALLS.

- NOTES:
- ③ QUANTITY SHOWN REPRESENTS TWO SETS.
 - ④ FOR FURTHER INFORMATION REGARDING END SECTION A, B, C, AND E BARS REFER TO RCB CULVERT - BARREL DETAILS.
 - ⑤ LENGTHS OF E1 & E2 BARS SHOWN ARE ADDITIONAL LENGTHS REQUIRED FOR THE END SECTION. LAP SPLICES, AS REQUIRED, SHALL BE IN ACCORDANCE WITH RCB BARREL STANDARD NOTES.
 - ⑥ 4-SETS OF N4-E1 BARS REQUIRED
 - ⑦ 4-SETS OF 20-E2 BARS REQUIRED WITH LENGTHS AS SHOWN CORRESPONDING TO SHORT EXTERIOR WALL, INTERIOR WALLS, AND LONG EXTERIOR WALL.
 - ⑧ C3 AND C4 BAR SIZE AND SPACING MAY DIFFER FROM BARREL SECTION.
 - ⑨ INCLUDES 5'-10" LAP.

APPROVED BY BRIDGE ENGINEER *Robert J. Mueh* DATE 4/09/09

OKLAHOMA DEPT. OF TRANSPORTATION
BRIDGE STANDARD (ENGLISH)

RCB CULVERTS - END SECTION DETAILS
TRIPLE CELL - 10'-0" HEIGHT - 30°
SHEET NO. 2 OF 3

1999 SPECIFICATIONS	RCB-E3-H10-30-2	OOE
---------------------	-----------------	-----