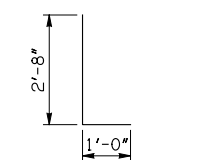


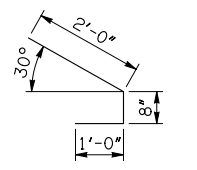
DESCRIPTION	REVISIONS	DATE

APRON BAR LIST

MARK	SIZE	FORM	ONE APRON SHOWN															
			10' SPAN		12' SPAN		14' SPAN		16' SPAN		18' SPAN		20' SPAN					
QTY.	LENGTH	REMARKS	QTY.	LENGTH	REMARKS	QTY.	LENGTH	REMARKS	QTY.	LENGTH	REMARKS	QTY.	LENGTH	REMARKS	QTY.	LENGTH	REMARKS	
AC1	#4	BNT	2	3'-8"		2	3'-8"		2	3'-8"		2	3'-8"		2	3'-8"		
AD1	#4	STR	2	72'-0"		2	72'-0"		2	72'-0"		2	72'-0"		2	72'-0"		
AL1	#4	STR	76	37'-9"		90	37'-9"		104	37'-9"		118	37'-9"		132	37'-9"		
AL2	#4	STR	114	18'-8" AVG.	2'-6" TO 34'-10"	114	18'-8" AVG.	2'-6" TO 34'-10"	114	18'-8" AVG.	2'-6" TO 34'-10"	114	18'-8" AVG.	2'-6" TO 34'-10"	114	18'-8" AVG.	2'-6" TO 34'-10"	
AL3	#4	STR	4	35'-9"		4	35'-9"		4	35'-9"		4	35'-9"		4	35'-9"		
AT1	#4	STR	4	100'-10"	①	4	107'-9"	①	4	114'-8"	①	4	124'-1"	②	4	131'-1"	②	
AT2	#4	STR	22	81'-11" AVG.	① 63'-9" TO 100'-1"	26	85'-4 1/2" AVG.	① 63'-9" TO 107'-0"	30	88'-10" AVG.	① 63'-9" TO 113'-11"	1	123'-4"	②	5	126'-10" AVG.	② 123'-4" TO 130'-4"	
AT3	#5	STR	22	81'-11" AVG.	① 63'-9" TO 100'-1"	26	85'-4 1/2" AVG.	① 63'-9" TO 107'-0"	30	88'-10" AVG.	① 63'-9" TO 113'-11"	1	123'-4"	②	5	126'-10" AVG.	② 123'-4" TO 130'-4"	
AT4	#4	STR	13	49'-1" AVG.	38'-8" TO 59'-6"	9	52'-7" AVG.	45'-8" TO 59'-6"	5	56'-0 1/2" AVG.	52'-7" TO 59'-6"	34	90'-7" AVG.	① 62'-0" TO 119'-2"	30	94'-0 1/2" AVG.	① 68'-11" TO 119'-2"	
AT5	#5	STR	13	49'-1" AVG.	38'-8" TO 59'-6"	9	52'-7" AVG.	45'-8" TO 59'-6"	5	56'-0 1/2" AVG.	52'-7" TO 59'-6"	34	90'-7" AVG.	① 62'-0" TO 119'-2"	30	94'-0 1/2" AVG.	① 68'-11" TO 119'-2"	

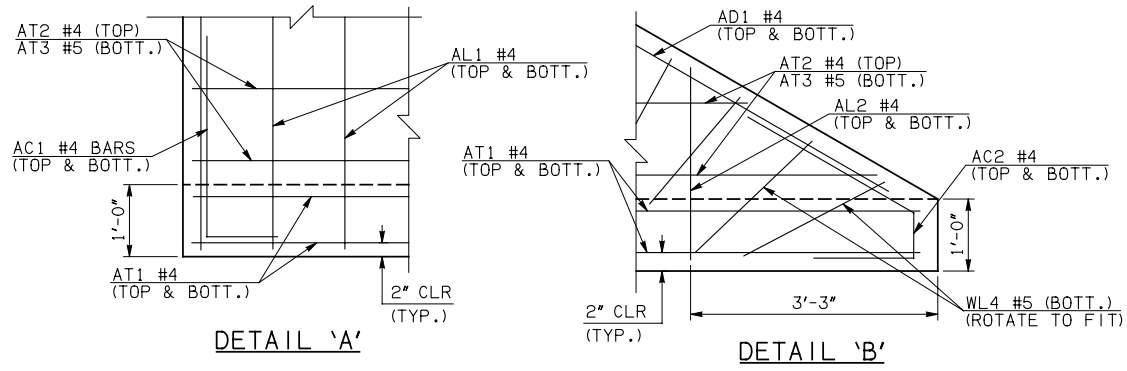


AC1 #4 x 3'-8"



AC2 #4 x 3'-8"

- ① INCLUDES 2'-6" LAP
 - ② INCLUDES TWO 2'-6" LAPS
 - ③ QUANTITY SHOWN REPRESENTS TWO SETS.
- NOTE: SEE END SECTION DETAILS SHEET NO. 2 OF 3 FOR VARIABLE REINFORCING QUANTITIES.



END SECTION VARIABLE DIMENSIONS												
SPAN	W	A	B	C	CW	D	E	F	G	H	LW	SW
10'	12"	12'-0"	2'-2 1/4"	3'-0"	98'-8 1/2"	3'-3 1/4"	21'-9 3/4"	22'-5 3/4"	22'-8 3/4"	39'-10"	68'-8 3/4"	34'-0"
12'	12"	14'-0"	2'-5 1/2"	3'-3 1/4"	105'-7 1/2"	3'-6 1/4"	25'-6 1/2"	26'-2 1/2"	26'-5 3/4"	46'-9 1/4"	68'-8 3/4"	40'-0"
14'	12"	16'-0"	2'-8 3/4"	3'-6 1/4"	112'-6 3/4"	3'-9 1/2"	29'-3 1/4"	29'-11 1/4"	30'-2 1/2"	53'-8 1/4"	68'-8 3/4"	46'-0"
16'	13"	18'-0"	2'-11 1/4"	3'-11 1/4"	119'-6"	4'-0 3/4"	33'-0 3/4"	33'-9 3/4"	33'-11 1/4"	60'-9 3/4"	68'-6 3/4"	52'-2"
18'	14"	19'-0"	2'-2"	3'-4 1/4"	126'-5"	3'-4"	35'-10"	36'-8 1/4"	36'-8"	67'-11 1/4"	68'-4 3/4"	58'-4"
20'	15"	21'-0"	2'-4 1/2"	3'-9 1/4"	133'-4 1/4"	3'-7 1/4"	39'-7 1/2"	40'-6 3/4"	40'-4 3/4"	75'-0 3/4"	68'-2 3/4"	64'-6"

APPROVED BY BRIDGE ENGINEER *Robert J. Muech* DATE 4/09/09

OKLAHOMA DEPT. OF TRANSPORTATION
BRIDGE STANDARD (ENGLISH)
RCB CULVERTS - END SECTION DETAILS
TRIPLE CELL - 10'-0" HEIGHT - 30°
 SHEET NO. 1 OF 3

1999 SPECIFICATIONS | RCB-E3-H10-30-1 | OOE | B-768E