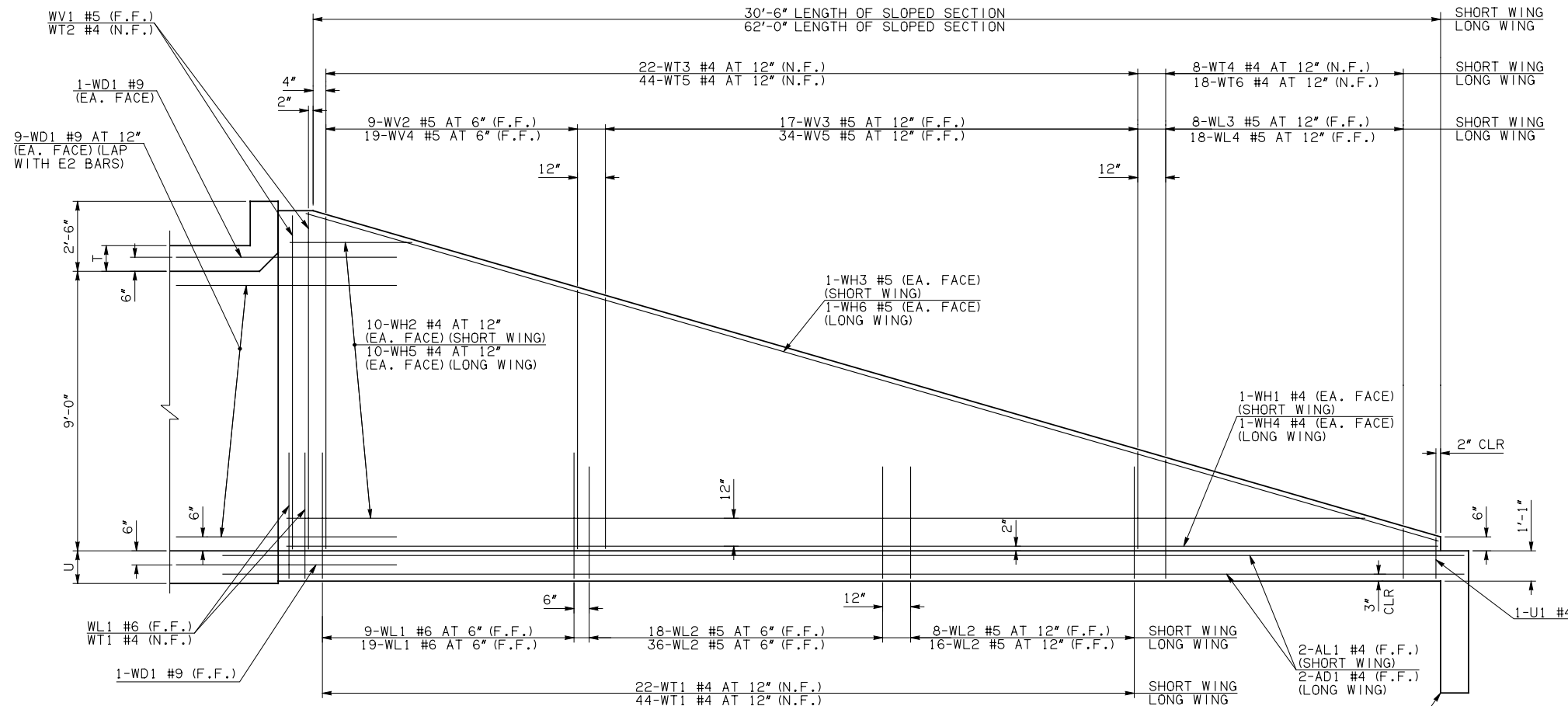
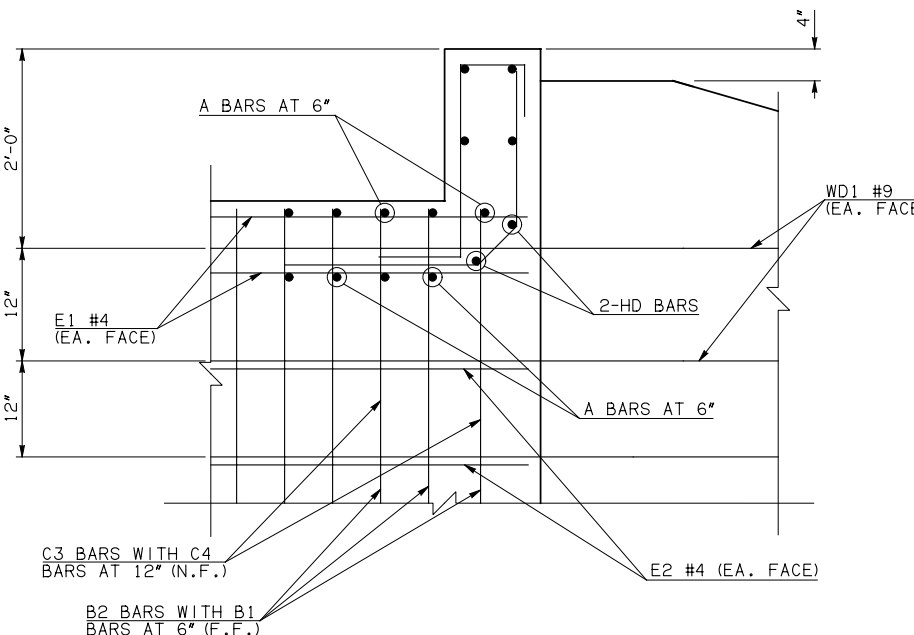


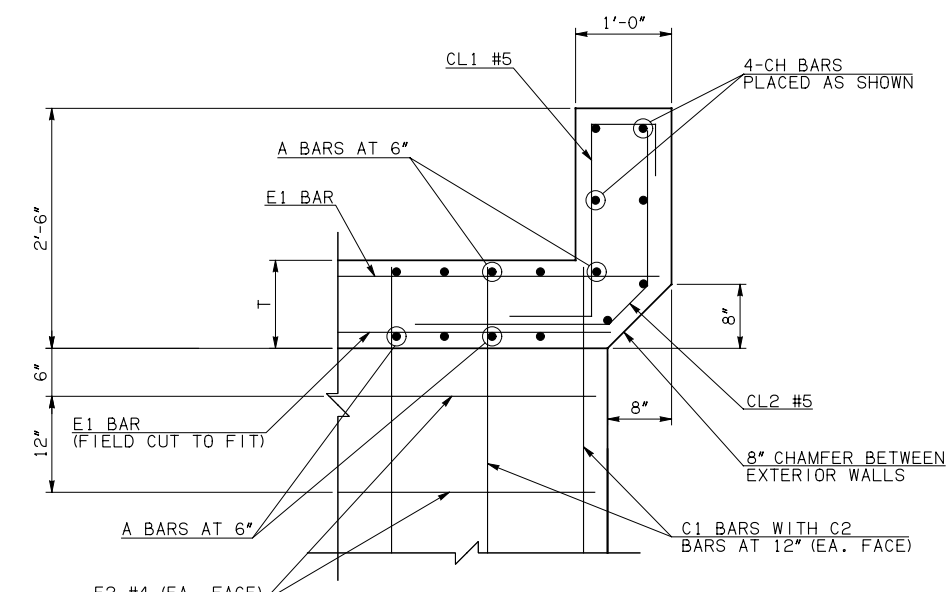
DESCRIPTION	REVISIONS	DATE



NOTE: F.F. = FAR FACE
N.F. = NEAR FACE

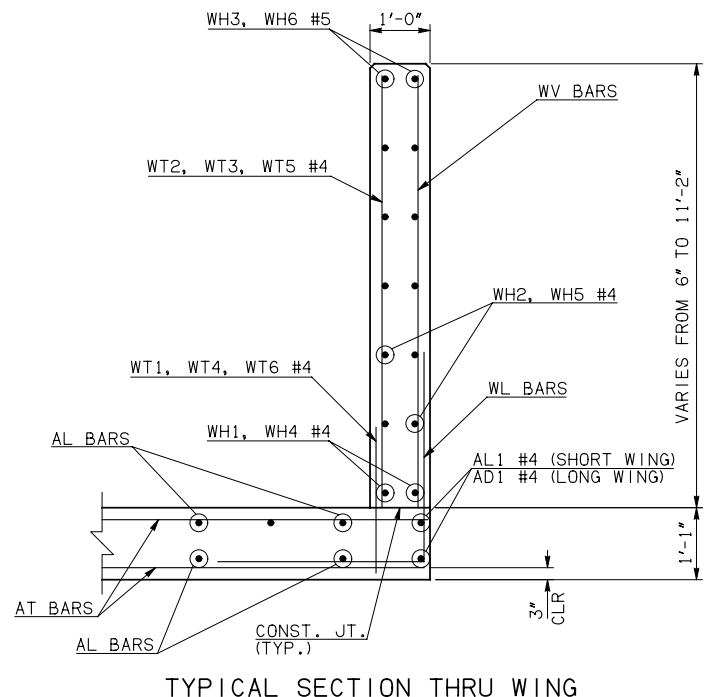


④ HEADWALL DETAIL AT EXTERIOR WALL

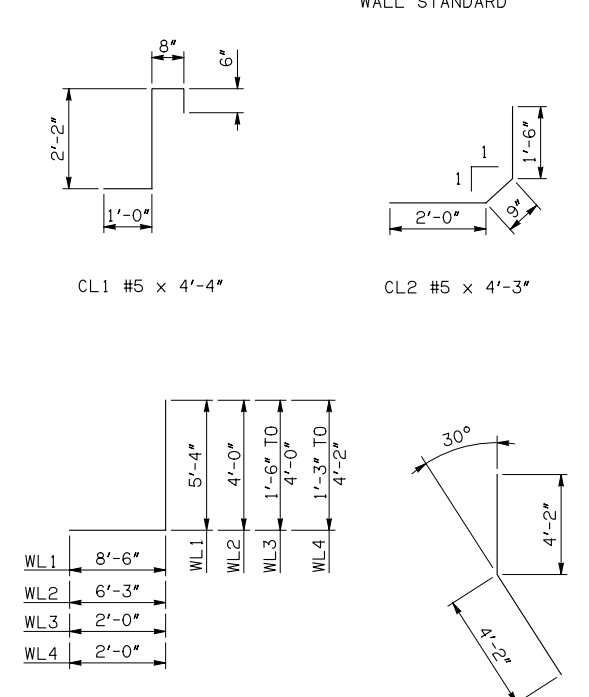


④ HEADWALL DETAIL AT INTERIOR WALL
DIMENSION SHOWN NORMAL TO HEADWALL

- NOTES:
- ① INCLUDES 2'-6" LAP
 - ③ QUANTITY SHOWN REPRESENTS TWO SETS.
 - ④ FOR FURTHER INFORMATION REGARDING END SECTION BARS A, B, C, E1, AND E2, REFER TO RCB CULVERT - BARREL DETAILS.
 - ⑤ INCLUDES 5'-10" LAP.



TYPICAL SECTION THRU WING



- WL1 #6 x 13'-10"
- WL2 #5 x 10'-3"
- WL3 #5 x 4'-9" AVG.
- WL4 #5 x 4'-8 1/2" AVG.
- WD1 #9 x 8'-4"
- U1 #4 x 3'-0"

WINGWALL BAR LIST (LONG AND SHORT WING INCLUDED)					
MARK	SIZE	QTY.	FORM	LENGTH	REMARKS
WD1	#9	42	BNT	8'-4"	
WH1	#4	2	STR	31'-4"	
③ WH2	#4	20	STR	16'-2 1/2" AVG.	3'-4" TO 29'-1"
WH3	#5	2	STR	32'-1"	
① WH4	#4	2	STR	65'-4"	
③ WH5	#4	20	STR	31'-11" AVG.	5'-9" TO 58'-1"
① WH6	#5	2	STR	65'-2"	
WL1	#6	32	BNT	13'-10"	
WL2	#5	78	BNT	10'-3"	
WL3	#5	8	BNT	4'-9" AVG.	3'-6" TO 6'-0"
WL4	#5	18	BNT	4'-8 1/2" AVG.	3'-3" TO 6'-2"
WT1	#4	71	STR	2'-10"	
WT2	#4	5	STR	11'-0"	
WT3	#4	22	STR	7'-2" AVG.	3'-6" TO 10'-10"
WT4	#4	8	STR	2'-9" AVG.	1'-6" TO 4'-0"
WT5	#4	44	STR	7'-2 1/2" AVG.	3'-6" TO 10'-11"
WT6	#4	18	STR	2'-8 1/2" AVG.	1'-3" TO 4'-2"
WV1	#5	4	STR	11'-0"	
WV2	#5	9	STR	10'-1 1/2" AVG.	9'-5" TO 10'-10"
WV3	#5	17	STR	6'-3 1/2" AVG.	3'-6" TO 9'-1"
WV4	#5	19	STR	10'-1 1/2" AVG.	9'-4" TO 10'-11"
WV5	#5	34	STR	6'-4" AVG.	3'-6" TO 9'-2"
U1	#4	2	BNT	3'-0"	

HEADWALL BAR LIST

ONE HEADWALL SHOWN																
MARK	FORM	10' SPAN			12' SPAN			14' SPAN			16' SPAN			18' SPAN		
		SIZE	QTY.	LENGTH	SIZE	QTY.	LENGTH	SIZE	QTY.	LENGTH	SIZE	QTY.	LENGTH	SIZE	QTY.	LENGTH
CH	STR	#6	4	39'-6"	#6	4	46'-5"	#6	4	53'-4"	#8	4	66'-3" ⑤	#8	4	73'-5" ⑤
CL1	BNT	#5	40	4'-4"	#5	47	4'-4"	#5	54	4'-4"	#5	61	4'-4"	#5	68	4'-4"
CL2	BNT	#5	40	4'-3"	#5	47	4'-3"	#5	54	4'-3"	#5	61	4'-3"	#5	68	4'-3"
HD	STR	#8	2	39'-6"	#8	2	46'-5"	#8	2	53'-4"	#9	2	66'-3" ⑤	#9	2	73'-5" ⑤

APPROVED BY BRIDGE ENGINEER *Robert J. Muech* DATE 4/09/09

OKLAHOMA DEPT. OF TRANSPORTATION
BRIDGE STANDARD (ENGLISH)
 RCB CULVERTS - END SECTION DETAILS
 TRIPLE CELL - 9'-0" HEIGHT - 30°
 SHEET NO. 3 OF 3

1999 SPECIFICATIONS RCB-E3-H9-30-3 OOE B-767E