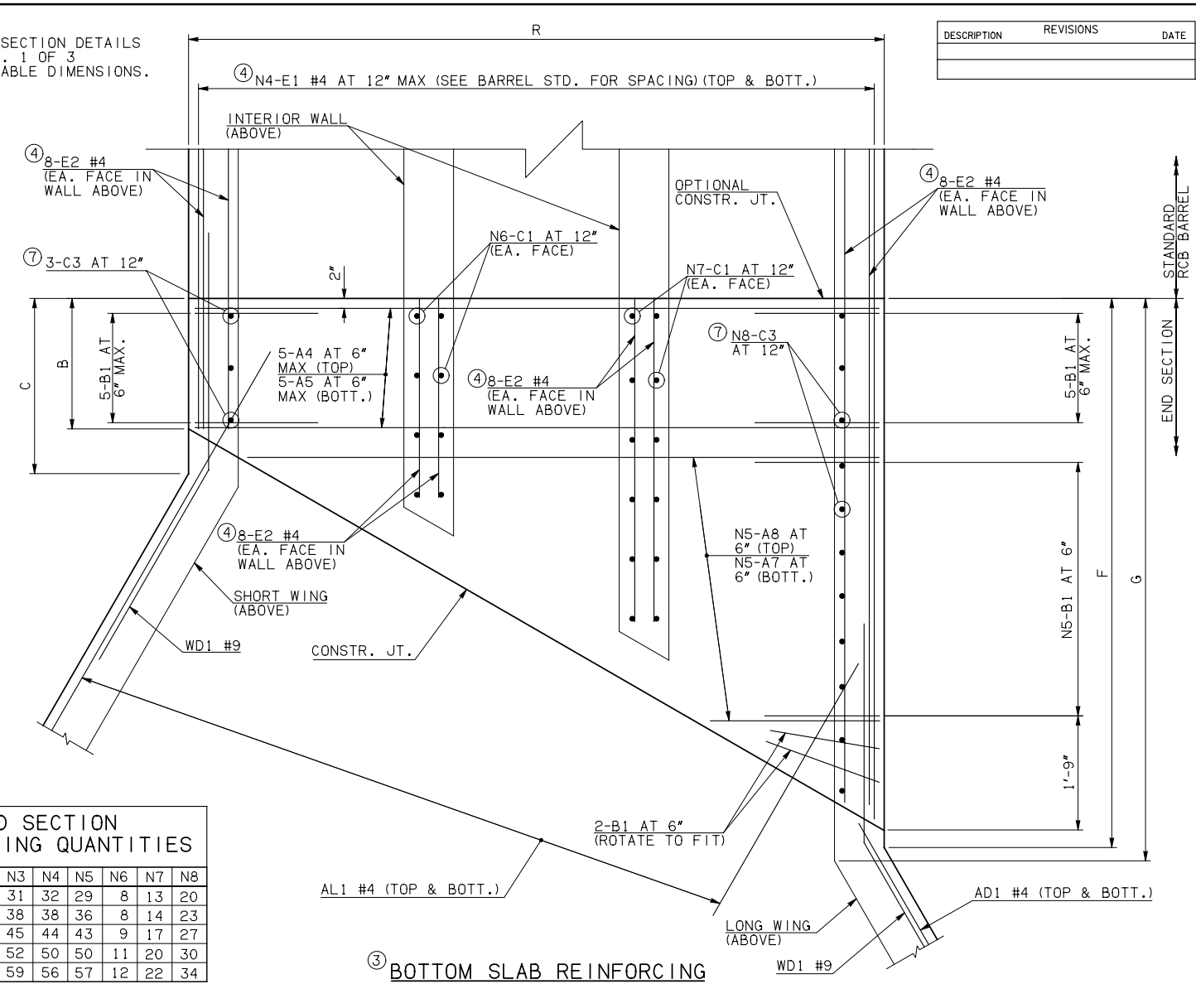
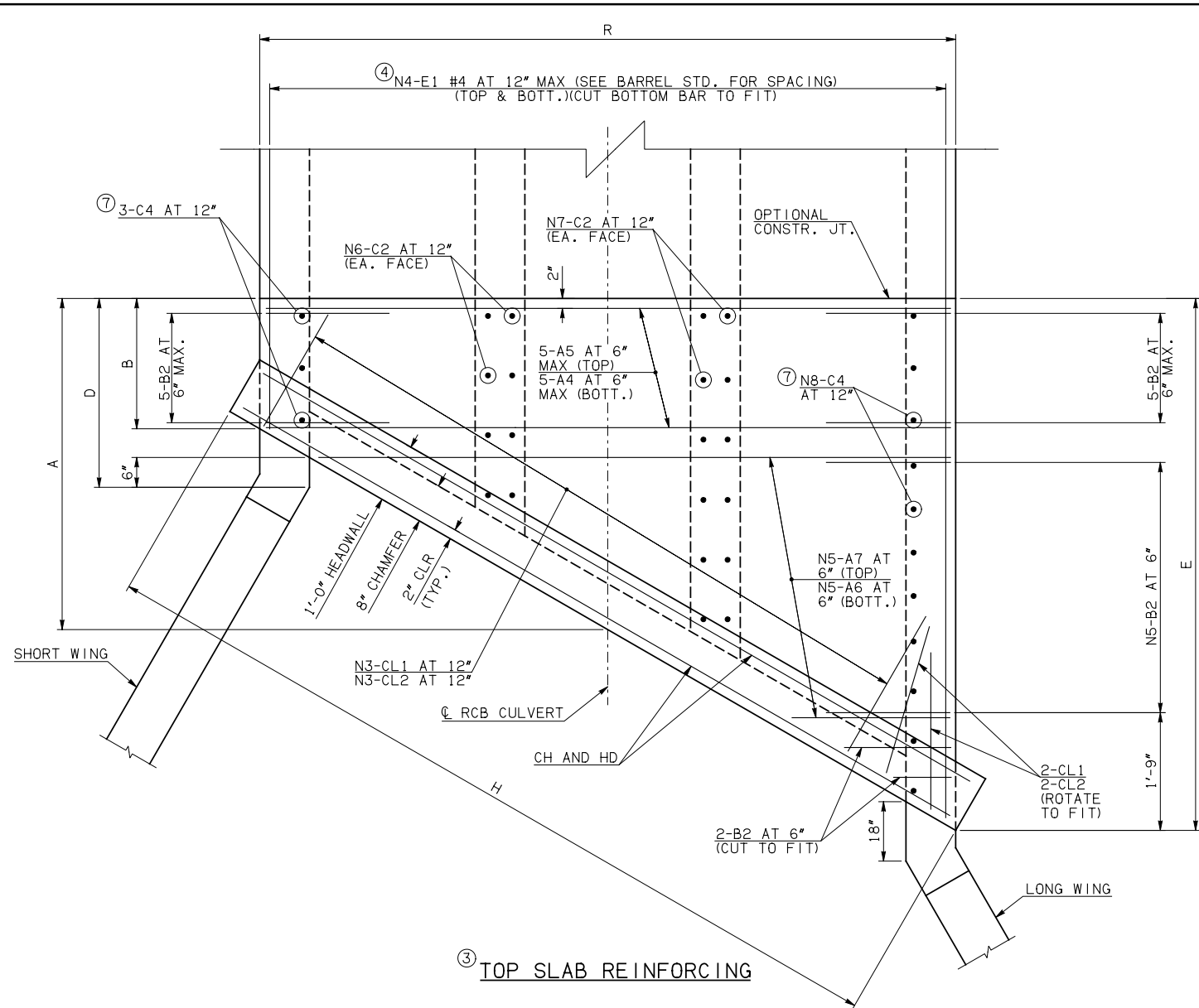


DESCRIPTION	REVISIONS	DATE

NOTE: SEE END SECTION DETAILS SHEET NO. 1 OF 3 FOR VARIABLE DIMENSIONS.



END SECTION REINFORCING QUANTITIES

SPAN	N1	N2	N3	N4	N5	N6	N7	N8
8'	12	17	31	32	29	8	13	20
10'	16	13	38	38	36	8	14	23
12'	20	9	45	44	43	9	17	27
14'	24	5	52	50	50	11	20	30
16'	28	1	59	56	57	12	22	34

END CONNECTION BAR LIST
(VARIABLE QUANTITIES AND LENGTHS)

ONE END CONNECTION SHOWN

MARK	FORM	8' SPAN				10' SPAN				12' SPAN				14' SPAN				16' SPAN			
		SIZE	QTY.	LENGTH	REMARKS	SIZE	QTY.	LENGTH	REMARKS	SIZE	QTY.	LENGTH	REMARKS	SIZE	QTY.	LENGTH	REMARKS	SIZE	QTY.	LENGTH	REMARKS
A4	STR	#5	10	27'-8"		#5	10	33'-8"		#6	10	39'-8"		#7	10	45'-8"		#7	10	51'-10"	
A5	STR	#6	10	27'-8"		#7	10	33'-8"		#8	10	39'-8"		#8	10	45'-8"		#8	10	51'-10"	
A6	STR	#7	29	13'-5 1/2" AVG.	1'-4" TO 25'-7"	#7	36	16'-6" AVG.	1'-4" TO 31'-8"	#7	43	19'-6 1/2" AVG.	1'-4" TO 37'-9"	#7	50	22'-6 1/2" AVG.	1'-4" TO 43'-9"	#8	57	25'-7" AVG.	1'-4" TO 49'-10"
A7	STR	#7	58	14'-7 1/2" AVG.	2'-6" TO 26'-9"	#8	72	17'-8" AVG.	2'-6" TO 32'-10"	#9	86	20'-8" AVG.	2'-6" TO 38'-10"	#9	100	23'-8 1/2" AVG.	2'-6" TO 44'-11"	#9	114	26'-9" AVG.	2'-6" TO 51'-0"
A8	STR	#7	29	14'-7 1/2" AVG.	2'-6" TO 26'-9"	#7	36	17'-8" AVG.	2'-6" TO 32'-10"	#7	43	20'-8" AVG.	2'-6" TO 38'-10"	#7	50	23'-8 1/2" AVG.	2'-6" TO 44'-11"	#8	57	26'-9" AVG.	2'-6" TO 51'-0"
B1	BNT	#6	41	5'-0"		#5	48	4'-9"		#5	55	5'-1"		#5	62	4'-8"		#6	69	5'-7"	
B2	BNT	#6	41	11'-0"		#5	48	11'-1"		#5	55	11'-5"		#5	62	11'-0"		#6	69	11'-6"	
C1	STR	#4	42	2'-2"		#4	44	2'-2"		#4	52	2'-3"		#5	62	2'-8"		#5	68	2'-9"	
C2	STR	#4	42	8'-10"		#4	44	8'-10"		#4	52	8'-11"		#5	62	9'-0"		#5	68	9'-1"	
C3	STR	#4	23	2'-2"		#4	26	2'-2"		#4	30	2'-3"		#4	33	2'-4"		#4	37	2'-5"	
C4	STR	#4	23	8'-10"		#4	26	8'-10"		#4	30	8'-11"		#4	33	9'-0"		#4	37	9'-1"	
E1	STR	#4	128	10'-9" AVG.	2'-9" TO 18'-9"	#4	152	11'-9 1/2" AVG.	2'-1" TO 21'-6"	#4	176	13'-9 1/2" AVG.	2'-4" TO 25'-3"	#4	200	15'-9" AVG.	2'-7" TO 28'-11"	#4	224	17'-9 1/2" AVG.	2'-10" TO 32'-9"
E2	STR	#4	64	10'-2" AVG.	2'-9", 7'-2", 12'-5", 18'-4"	#4	64	11'-2 1/2" AVG.	2'-1", 7'-8", 14'-0", 21'-1"	#4	64	13'-2 1/2" AVG.	2'-4", 9'-1", 16'-7", 24'-10"	#4	64	15'-2 1/2" AVG.	2'-7", 10'-6", 19'-2", 28'-7"	#4	64	17'-2 1/2" AVG.	2'-10", 11'-11", 21'-9", 32'-4"

QUANTITIES

ITEM	UNIT	8' SPAN	10' SPAN	12' SPAN	14' SPAN	16' SPAN
CLASS AA CONCRETE	CY	115.80	132.70	158.10	187.50	222.60
REINFORCING STEEL	LB	16860.00	20990.00	26840.00	32400.00	41040.00

NOTE: QUANTITIES ABOVE ARE FOR ONE END SECTION, WHICH IS COMPRISED OF ONE END CONNECTION, ONE HEADWALL, ONE APRON, AND TWO WINGWALLS.

- NOTES: ② QUANTITY SHOWN REPRESENTS TWO SETS.
 ③ FOR FURTHER INFORMATION REGARDING END SECTION A, B, C, AND E BARS REFER TO RCB CULVERT - BARREL DETAILS.
 ④ LENGTHS OF E1 & E2 BARS SHOWN ARE ADDITIONAL LENGTHS REQUIRED FOR THE END SECTION. LAP SPLICES, AS REQUIRED, SHALL BE IN ACCORDANCE WITH RCB BARREL STANDARD NOTES.

- ⑤ 4-SETS OF N4-E1 BARS REQUIRED
 ⑥ 4-SETS OF 16-E2 BARS REQUIRED WITH LENGTHS AS SHOWN CORRESPONDING TO SHORT EXTERIOR WALL, INTERIOR WALLS, AND LONG EXTERIOR WALL.
 ⑦ C3 AND C4 BAR SIZE AND SPACING MAY DIFFER FROM BARREL STANDARD.

APPROVED BY BRIDGE ENGINEER *Robert J. Muech* DATE 4/09/09

OKLAHOMA DEPT. OF TRANSPORTATION
BRIDGE STANDARD (ENGLISH)
 RCB CULVERTS - END SECTION DETAILS
 TRIPLE CELL - 8'-0" HEIGHT - 30°
 SHEET NO. 2 OF 3