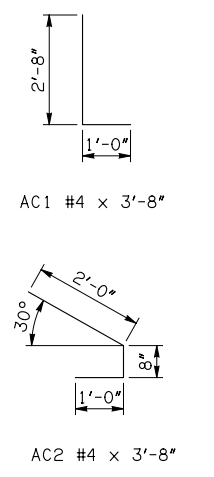


APRON BAR LIST

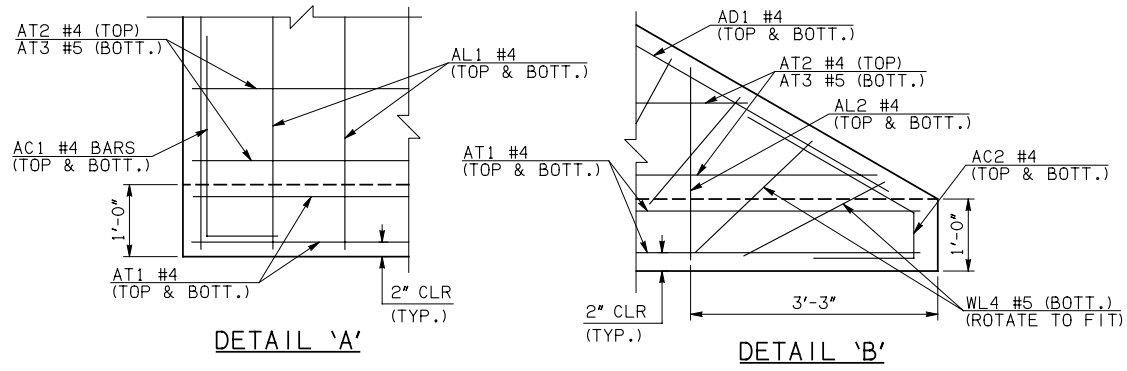
ONE APRON SHOWN															
MARK	SIZE	FORM	8' SPAN		10' SPAN		12' SPAN		14' SPAN		16' SPAN		REMARKS		
			QTY.	LENGTH	QTY.	LENGTH	QTY.	LENGTH	QTY.	LENGTH	QTY.	LENGTH			
AC1	#4	BNT	2	3'-8"	2	3'-8"	2	3'-8"	2	3'-8"	2	3'-8"	2	3'-8"	
AD1	#4	STR	2	57'-6"	2	57'-6"	2	57'-6"	2	57'-6"	2	57'-6"	2	57'-6"	
AL1	#4	STR	62	31'-9"	76	31'-9"	90	31'-9"	104	31'-9"	118	31'-9"	132	31'-9"	
AL2	#4	STR	92	15'-5 1/2" AVG.	92	15'-5 1/2" AVG.	92	15'-5 1/2" AVG.	92	15'-5 1/2" AVG.	92	15'-5 1/2" AVG.	92	15'-5 1/2" AVG.	2'-6" TO 28'-5"
AL3	#4	STR	4	29'-9"	4	29'-9"	4	29'-9"	4	29'-9"	4	29'-9"	4	29'-9"	
AT1	#4	STR	4	83'-0"	4	89'-11"	4	96'-10"	4	103'-10"	4	110'-9"	4	117'-9"	
AT2	#4	STR	12	72'-9" AVG.	16	76'-2 1/2" AVG.	20	79'-8" AVG.	24	83'-2" AVG.	28	86'-7 1/2" AVG.	32	89'-11" AVG.	63'-3" TO 110'-0"
AT3	#5	STR	12	72'-9" AVG.	16	76'-2 1/2" AVG.	20	79'-8" AVG.	24	83'-2" AVG.	28	86'-7 1/2" AVG.	32	89'-11" AVG.	63'-3" TO 110'-0"
AT4	#4	STR	17	45'-1 1/2" AVG.	13	48'-7" AVG.	9	52'-1" AVG.	5	55'-6 1/2" AVG.	1	59'-0"	1	59'-0"	31'-3" TO 59'-0"
AT5	#5	STR	17	45'-1 1/2" AVG.	13	48'-7" AVG.	9	52'-1" AVG.	5	55'-6 1/2" AVG.	1	59'-0"	1	59'-0"	31'-3" TO 59'-0"



① INCLUDES 2'-6" LAP
 ② QUANTITY SHOWN REPRESENTS TWO SETS.
 NOTE: SEE END SECTION DETAILS SHEET NO. 2 OF 3 FOR VARIABLE REINFORCING QUANTITIES.

END SECTION VARIABLE DIMENSIONS

SPAN	W	A	B	C	CW	D	E	F	G	H	LW	R	SW
8'	12"	11'-0"	2'-11"	4'-0 3/4"	80'-10 3/4"	4'-0"	19'-1"	20'-0 3/4"	20'-0"	32'-11"	56'-1 3/4"	28'-0"	28'-11 1/4"
10'	12"	12'-0"	2'-2 1/4"	3'-4"	87'-9 3/4"	3'-3 1/4"	21'-9 3/4"	22'-9 3/4"	22'-8 3/4"	39'-10"	56'-1 3/4"	34'-0"	28'-11 1/4"
12'	12"	14'-0"	2'-5 1/2"	3'-7 1/4"	94'-9"	3'-6 1/4"	25'-6 1/2"	26'-6 1/2"	26'-5 3/4"	46'-9 1/4"	56'-1 3/4"	40'-0"	28'-11 1/4"
14'	12"	16'-0"	2'-8 3/4"	3'-10 1/4"	101'-8"	3'-9 1/2"	29'-3 1/4"	30'-3 1/4"	30'-2 1/2"	53'-8 1/4"	56'-1 3/4"	46'-0"	28'-11 1/4"
16'	13"	18'-0"	2'-11 1/4"	4'-3 1/4"	108'-7 1/4"	4'-0 3/4"	33'-0 3/4"	34'-1 3/4"	33'-11 1/4"	60'-9 3/4"	55'-11 3/4"	52'-2"	28'-9 1/4"



APPROVED BY BRIDGE ENGINEER *Debra J. Nusch* DATE 4/09/09

OKLAHOMA DEPT. OF TRANSPORTATION
BRIDGE STANDARD (ENGLISH)
 RCBC CULVERTS - END SECTION DETAILS
 TRIPLE CELL - 8'-0" HEIGHT - 30°
 SHEET NO. 1 OF 3

1999 SPECIFICATIONS | RCBC-E3-H8-30-1 | OOE | B-762E