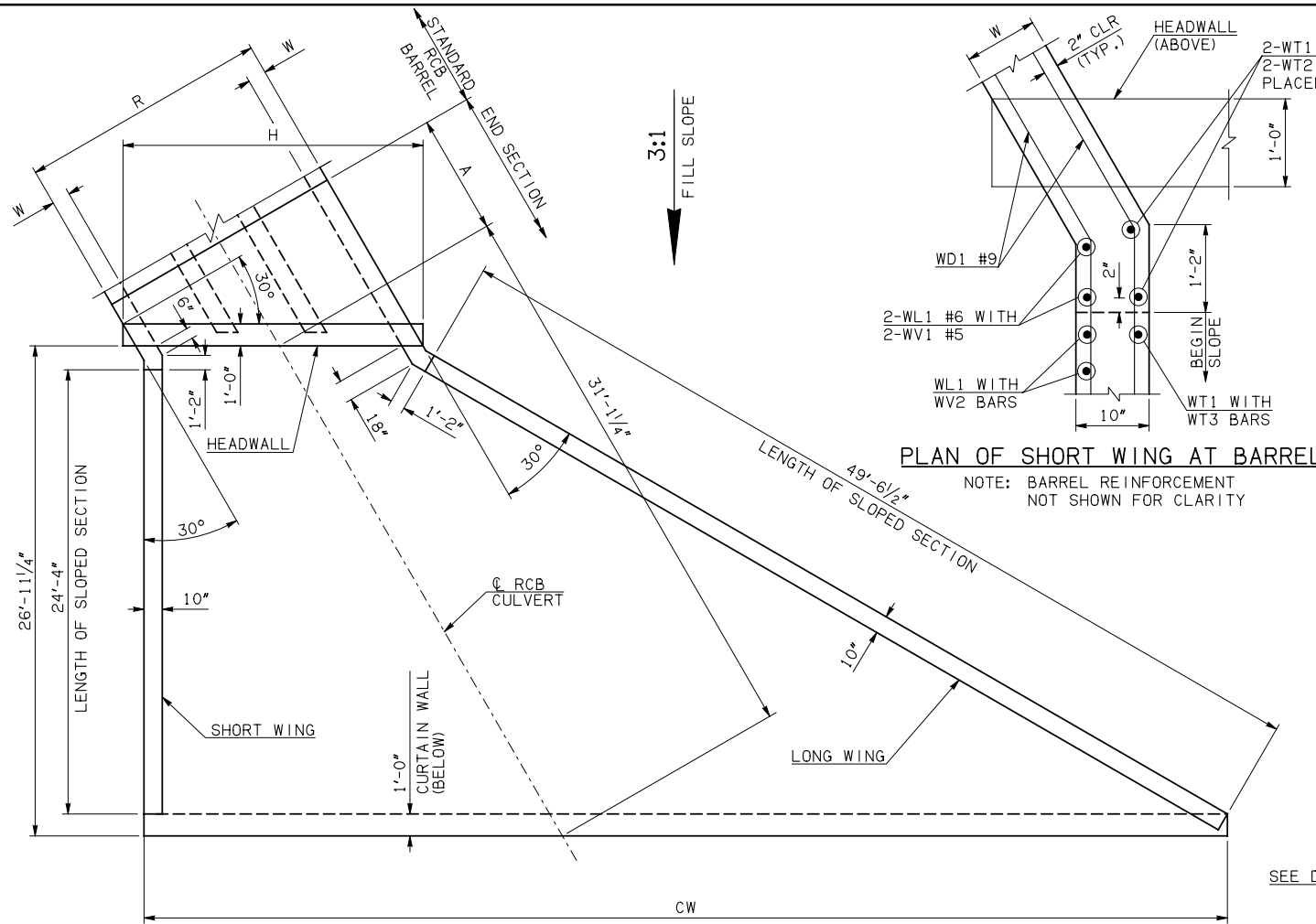
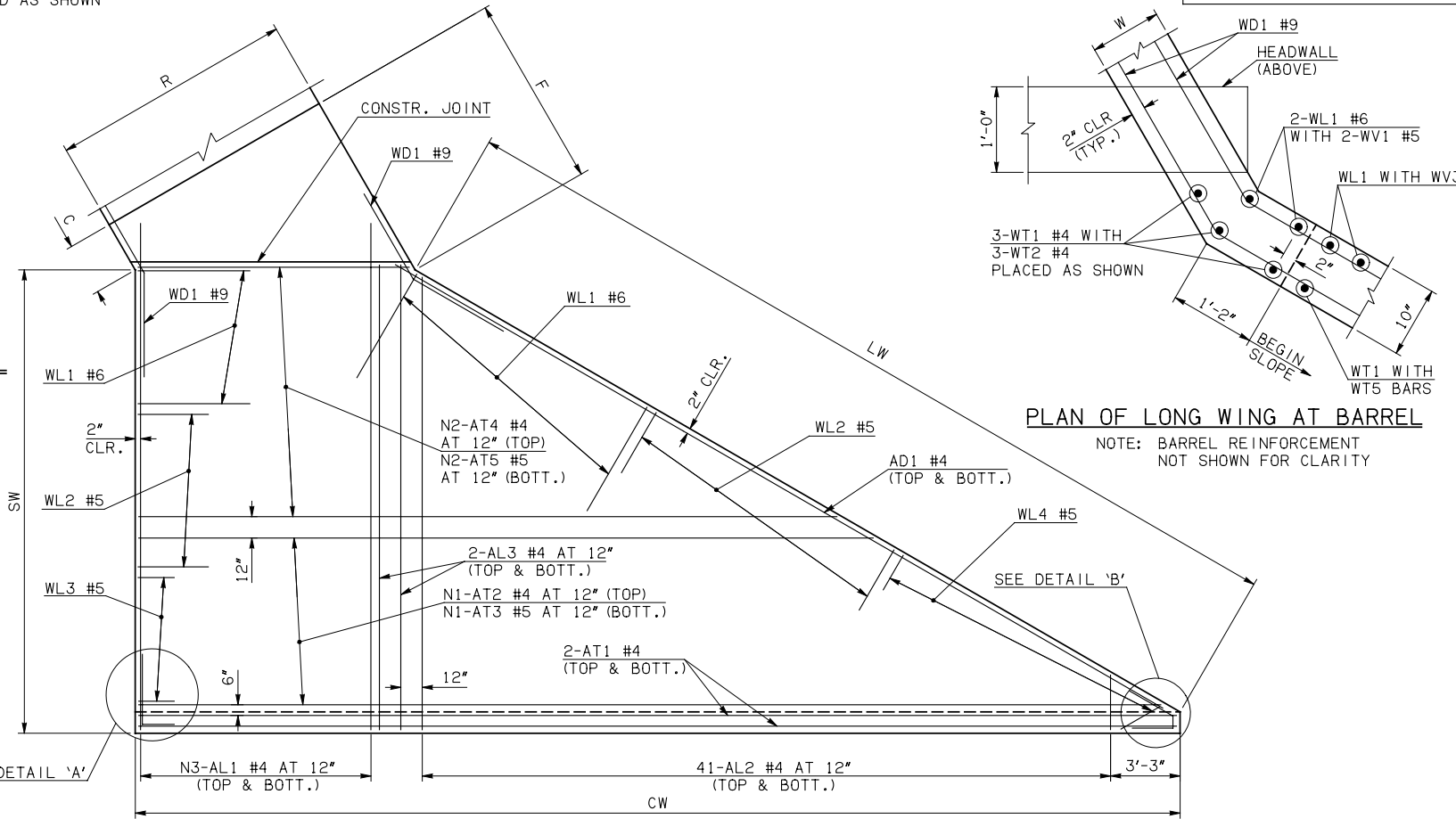


DESCRIPTION	REVISIONS	DATE



PLAN OF SHORT WING AT BARREL
NOTE: BARREL REINFORCEMENT NOT SHOWN FOR CLARITY

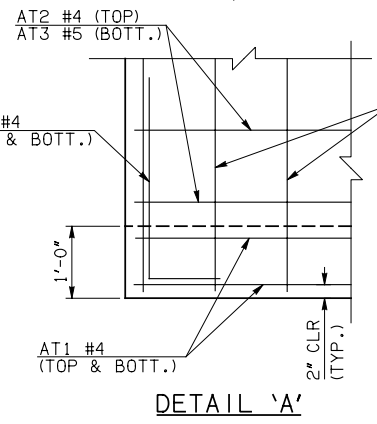


PLAN OF LONG WING AT BARREL
NOTE: BARREL REINFORCEMENT NOT SHOWN FOR CLARITY

END SECTION PLAN

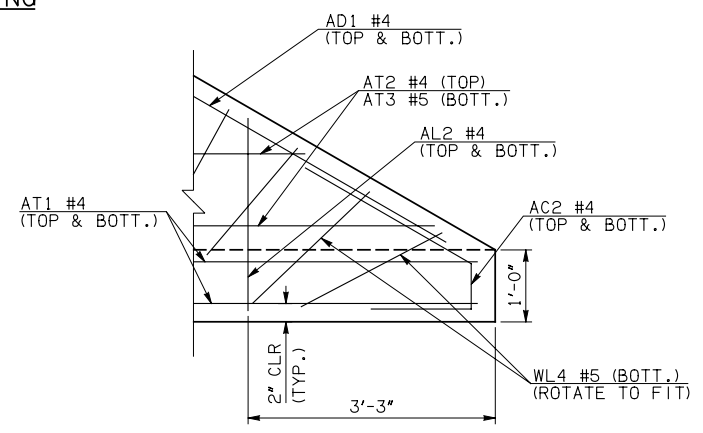
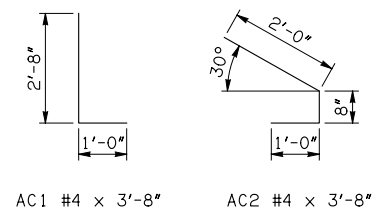
NOTE: SEE END SECTION DETAILS SHEET NO. 2 OF 3 FOR VARIABLE REINFORCING QUANTITIES.

END SECTION VARIABLE DIMENSIONS													
SPAN	W	A	B	C	CW	D	E	F	G	H	LW	R	SW
8'	12"	11'-0"	2'-11"	4'-0 3/4"	75'-8 1/4"	4'-0"	19'-1"	20'-0 3/4"	20'-0"	32'-11"	50'-1 3/4"	28'-0"	25'-11 1/4"
10'	12"	12'-0"	2'-2 1/4"	3'-4"	82'-7 1/2"	3'-3 1/4"	21'-9 3/4"	22'-9 3/4"	22'-8 3/4"	39'-10"	50'-1 3/4"	34'-0"	25'-11 1/4"
12'	12"	14'-0"	2'-5 1/2"	3'-7 1/4"	89'-6 1/2"	3'-6 1/4"	25'-6 1/2"	26'-6 1/2"	26'-5 3/4"	46'-9 1/4"	50'-1 3/4"	40'-0"	25'-11 1/4"
14'	12"	16'-0"	2'-8 3/4"	3'-10 1/4"	96'-5 3/4"	3'-9 1/2"	29'-3 1/4"	30'-3 1/4"	30'-2 1/2"	53'-8 1/4"	50'-1 3/4"	46'-0"	25'-11 1/4"



DETAIL 'A'

APRON REINFORCING



DETAIL 'B'

- ① INCLUDES 2'-6" LAP
- ② QUANTITY SHOWN REPRESENTS TWO SETS.

APRON BAR LIST

MARK	SIZE	FORM	ONE APRON SHOWN											
			8' SPAN			10' SPAN			12' SPAN			14' SPAN		
			QTY.	LENGTH	REMARKS	QTY.	LENGTH	REMARKS	QTY.	LENGTH	REMARKS	QTY.	LENGTH	REMARKS
AC1	#4	BNT	2	3'-8"		2	3'-8"		2	3'-8"		2	3'-8"	
AC2	#4	BNT	2	3'-8"		2	3'-8"		2	3'-8"		2	3'-8"	
AD1	#4	STR	2	51'-6"		2	51'-6"		2	51'-6"		2	51'-6"	
AL1	#4	STR	62	28'-9"		76	28'-9"		90	28'-9"		104	28'-9"	
AL2	#4	STR	82	14'-0 1/2" AVG.	2'-6" TO 25'-7"	82	14'-0 1/2" AVG.	2'-6" TO 25'-7"	82	14'-0 1/2" AVG.	2'-6" TO 25'-7"	82	14'-0 1/2" AVG.	2'-6" TO 25'-7"
AL3	#4	STR	4	26'-9"		4	26'-9"		4	26'-9"		4	26'-9"	
AT1	#4	STR	4	77'-10"		4	84'-9"		4	91'-8"		4	98'-7"	
AT2	#4	STR	9	70'-2" AVG.	63'-3" TO 77'-1"	13	73'-7 1/2" AVG.	63'-3" TO 84'-0"	17	77'-1" AVG.	63'-3" TO 90'-11"	21	80'-6 1/2" AVG.	63'-3" TO 97'-10"
AT3	#5	STR	9	70'-2" AVG.	63'-3" TO 77'-1"	13	73'-7 1/2" AVG.	63'-3" TO 84'-0"	17	77'-1" AVG.	63'-3" TO 90'-11"	21	80'-6 1/2" AVG.	63'-3" TO 97'-10"
AT4	#4	STR	17	45'-1 1/2" AVG.	31'-3" TO 59'-0"	13	48'-7" AVG.	38'-2" TO 59'-0"	9	52'-1" AVG.	45'-2" TO 59'-0"	5	55'-6 1/2" AVG.	52'-1" TO 59'-0"
AT5	#5	STR	17	45'-1 1/2" AVG.	31'-3" TO 59'-0"	13	48'-7" AVG.	38'-2" TO 59'-0"	9	52'-1" AVG.	45'-2" TO 59'-0"	5	55'-6 1/2" AVG.	52'-1" TO 59'-0"

APPROVED BY BRIDGE ENGINEER *Robert J. Nussler* DATE 4/09/09

OKLAHOMA DEPT. OF TRANSPORTATION
BRIDGE STANDARD (ENGLISH)
RCB CULVERTS - END SECTION DETAILS
TRIPLE CELL - 7'-0" HEIGHT - 30°
SHEET NO. 1 OF 3