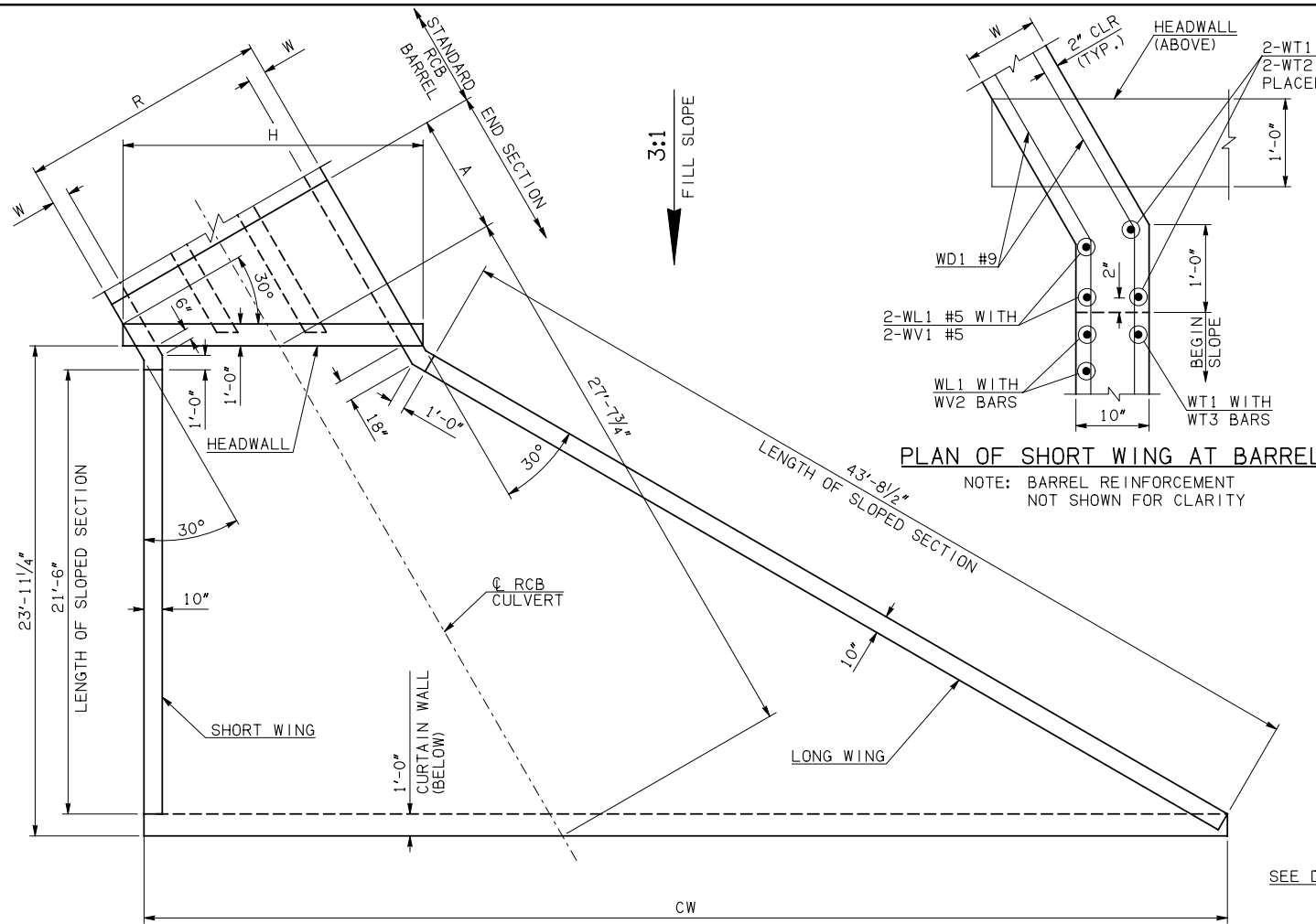
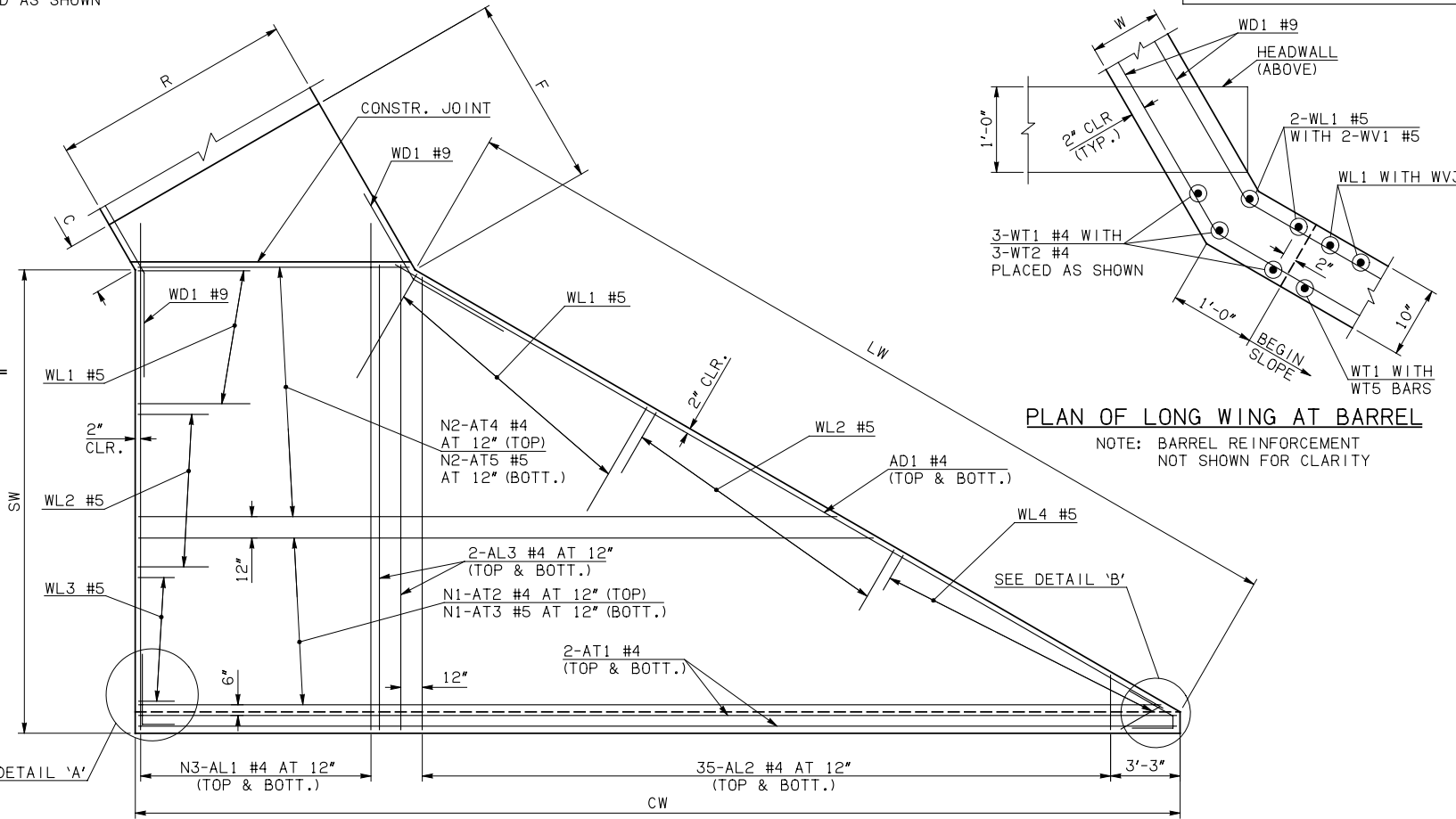


DESCRIPTION	REVISIONS	DATE



PLAN OF SHORT WING AT BARREL

NOTE: BARREL REINFORCEMENT NOT SHOWN FOR CLARITY



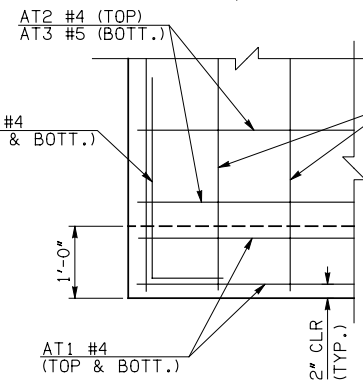
PLAN OF LONG WING AT BARREL

NOTE: BARREL REINFORCEMENT NOT SHOWN FOR CLARITY

END SECTION PLAN

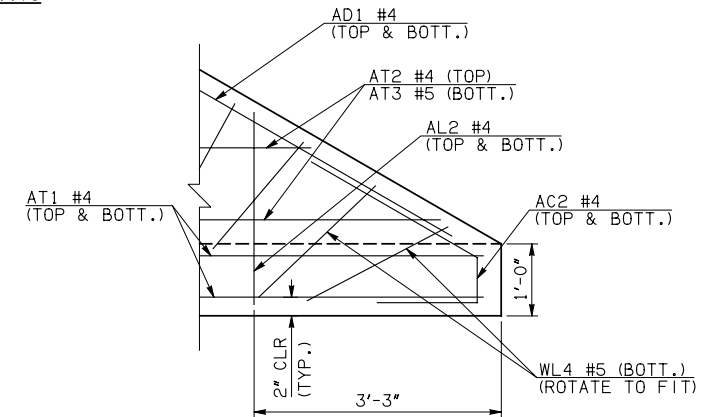
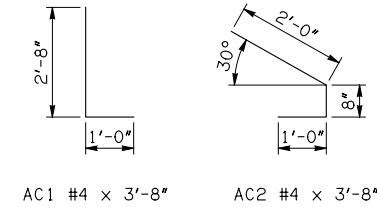
NOTE: SEE END SECTION DETAILS SHEET NO. 2 OF 3 FOR VARIABLE REINFORCING QUANTITIES.

END SECTION VARIABLE DIMENSIONS													
SPAN	W	A	B	C	CW	D	E	F	G	H	LW	R	SW
6'	12"	9'-0"	2'-7 ³ / ₄ "	3'-9 ¹ / ₂ "	63'-6 ³ / ₄ "	3'-8 ³ / ₄ "	15'-4 ¹ / ₄ "	16'-4"	16'-3 ¹ / ₄ "	25'-11 ³ / ₄ "	44'-1 ³ / ₄ "	22'-0"	22'-11 ¹ / ₄ "
8'	12"	11'-0"	2'-11"	4'-0 ³ / ₄ "	70'-6"	4'-0"	19'-1"	20'-0 ³ / ₄ "	20'-0"	32'-11"	44'-1 ³ / ₄ "	28'-0"	22'-11 ¹ / ₄ "
10'	12"	12'-0"	2'-2 ¹ / ₄ "	3'-4"	77'-5"	3'-3 ¹ / ₄ "	21'-9 ³ / ₄ "	22'-9 ³ / ₄ "	22'-8 ³ / ₄ "	39'-10"	44'-1 ³ / ₄ "	34'-0"	22'-11 ¹ / ₄ "
12'	12"	14'-0"	2'-5 ¹ / ₂ "	3'-7 ¹ / ₄ "	84'-4 ¹ / ₄ "	3'-6 ¹ / ₄ "	25'-6 ¹ / ₂ "	26'-6 ¹ / ₂ "	26'-5 ³ / ₄ "	46'-9 ¹ / ₄ "	44'-1 ³ / ₄ "	40'-0"	22'-11 ¹ / ₄ "



DETAIL 'A'

APRON REINFORCING



DETAIL 'B'

- ① INCLUDES 2'-6" LAP
- ② QUANTITY SHOWN REPRESENTS TWO SETS.

APRON BAR LIST

APRON BAR LIST														
ONE APRON SHOWN														
MARK	SIZE	FORM	6' SPAN			8' SPAN			10' SPAN			12' SPAN		
			QTY.	LENGTH	REMARKS	QTY.	LENGTH	REMARKS	QTY.	LENGTH	REMARKS	QTY.	LENGTH	REMARKS
AC1	#4	BNT	2	3'-8"		2	3'-8"		2	3'-8"		2	3'-8"	
AC2	#4	BNT	2	3'-8"		2	3'-8"		2	3'-8"		2	3'-8"	
AD1	#4	STR	2	45'-6"		2	45'-6"		2	45'-6"		2	45'-6"	
AL1	#4	STR	48	25'-9"		62	25'-9"		76	25'-9"		90	25'-9"	
AL2	#4	STR	70	12'-3 ¹ / ₂ " AVG.	2'-6" TO 22'-1"	70	12'-3 ¹ / ₂ " AVG.	2'-6" TO 22'-1"	70	12'-3 ¹ / ₂ " AVG.	2'-6" TO 22'-1"	70	12'-3 ¹ / ₂ " AVG.	2'-6" TO 22'-1"
AL3	#4	STR	4	23'-9"		4	23'-9"		4	23'-9"		4	23'-9"	
AT1	#4	STR	4	65'-8"		4	72'-7"		4	79'-7"		4	86'-6"	
AT2	#4	STR	2	64'-1" AVG.	63'-3" TO 64'-11"	6	67'-6 ¹ / ₂ " AVG.	63'-3" TO 71'-10"	10	71'-0 ¹ / ₂ " AVG.	63'-3" TO 78'-10"	14	74'-6" AVG.	63'-3" TO 85'-9"
AT3	#5	STR	2	64'-1" AVG.	63'-3" TO 64'-11"	6	67'-6 ¹ / ₂ " AVG.	63'-3" TO 71'-10"	10	71'-0 ¹ / ₂ " AVG.	63'-3" TO 78'-10"	14	74'-6" AVG.	63'-3" TO 85'-9"
AT4	#4	STR	21	41'-8" AVG.	24'-4" TO 59'-0"	17	45'-1 ¹ / ₂ " AVG.	31'-3" TO 59'-0"	13	48'-7" AVG.	38'-2" TO 59'-0"	9	52'-1" AVG.	45'-2" TO 59'-0"
AT5	#5	STR	21	41'-8" AVG.	24'-4" TO 59'-0"	17	45'-1 ¹ / ₂ " AVG.	31'-3" TO 59'-0"	13	48'-7" AVG.	38'-2" TO 59'-0"	9	52'-1" AVG.	45'-2" TO 59'-0"

APPROVED BY BRIDGE ENGINEER *Robert J. Muech* DATE 4/09/09

OKLAHOMA DEPT. OF TRANSPORTATION
BRIDGE STANDARD (ENGLISH)
 RCB CULVERTS - END SECTION DETAILS
 TRIPLE CELL - 6'-0" HEIGHT - 30°
 SHEET NO. 1 OF 3

1999 SPECIFICATIONS	RCB-E3-H6-30-1	OOE
		B-756E