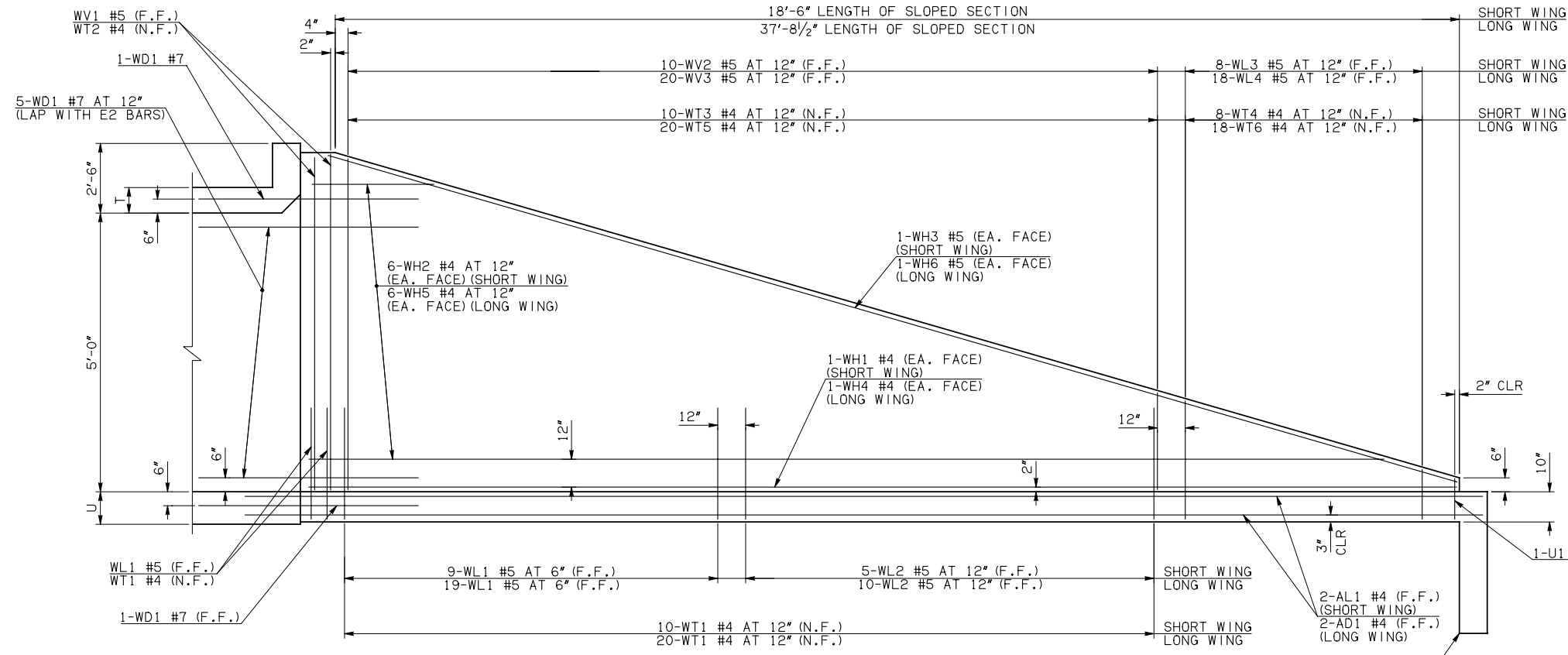
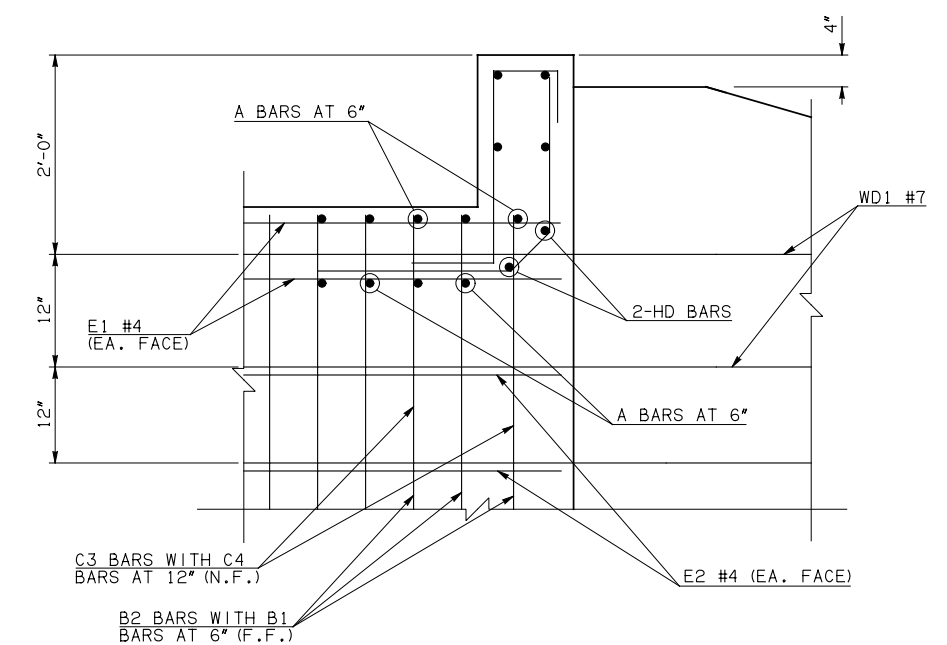


DESCRIPTION	REVISIONS	DATE

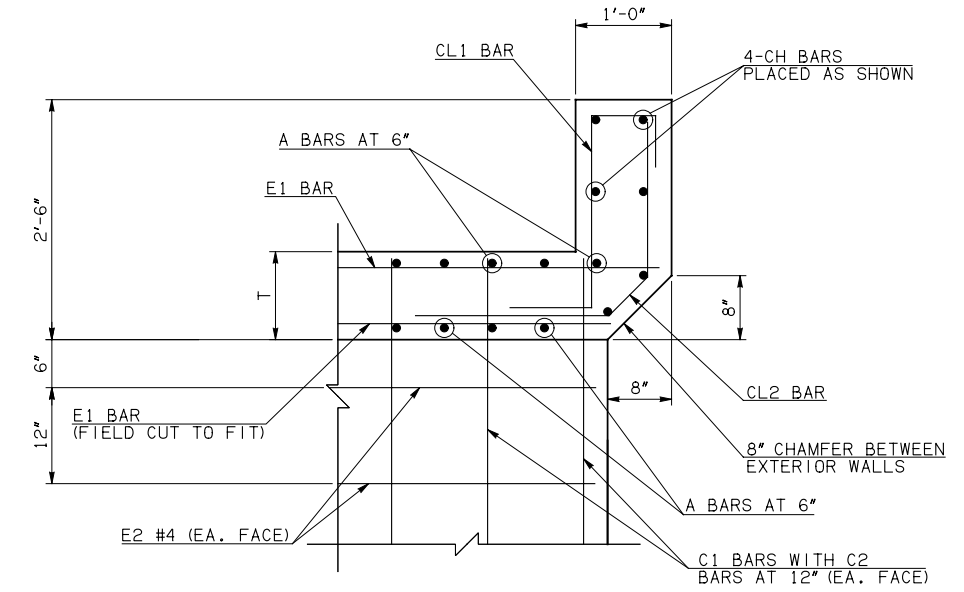


**WING ELEVATION**

NOTE: F.F. = FAR FACE  
N.F. = NEAR FACE

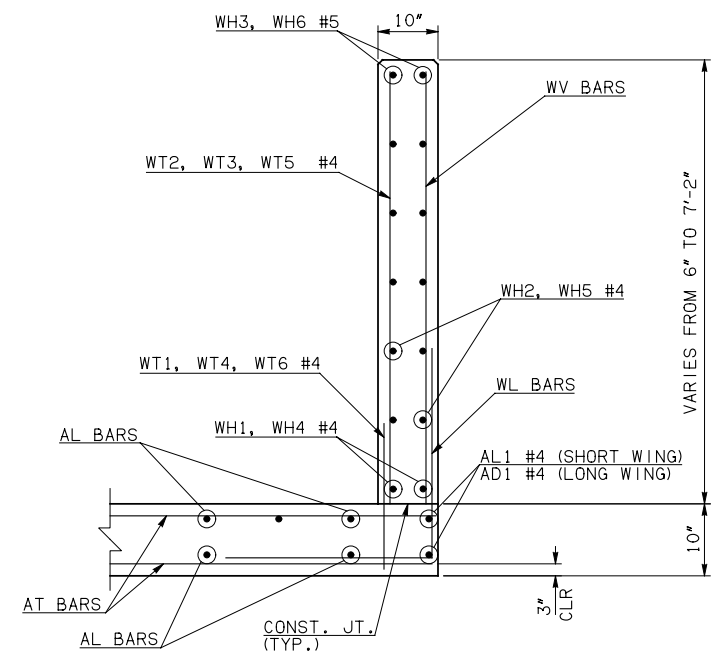


③ HEADWALL DETAIL AT EXTERIOR WALL

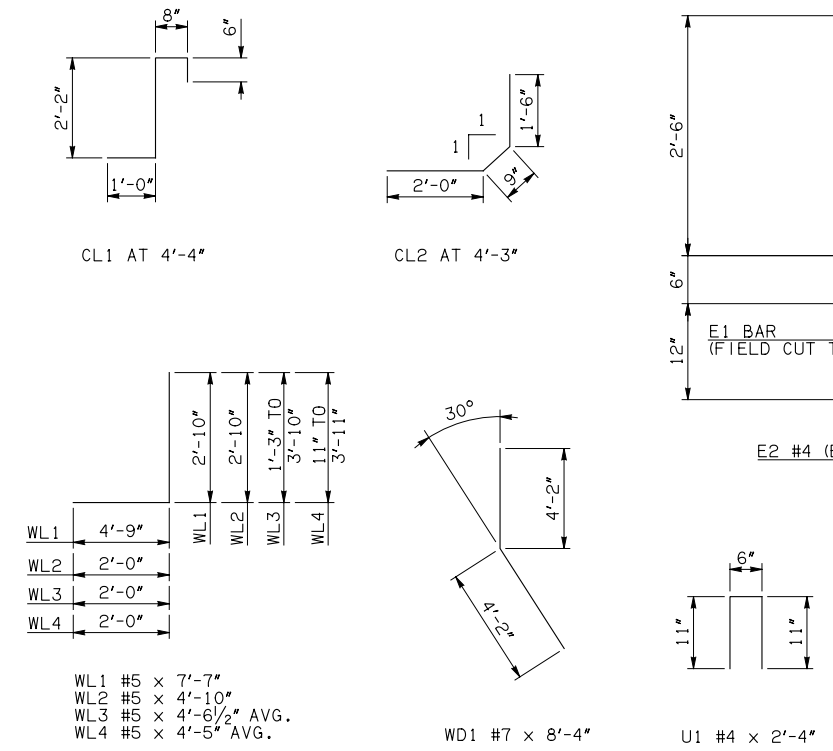


③ HEADWALL DETAIL AT MIDSPAN

DIMENSION SHOWN NORMAL TO HEADWALL  
NOTES:  
② QUANTITY SHOWN REPRESENTS TWO SETS.  
③ FOR FURTHER INFORMATION REGARDING END SECTION BARS A, B, C, E1, AND E2, REFER TO RCB CULVERT - BARREL DETAILS.



TYPICAL SECTION THRU WING



WINGWALL BAR LIST (LONG AND SHORT WING INCLUDED)					
MARK	SIZE	QTY.	FORM	LENGTH	REMARKS
WD1	#7	14	BNT	8'-4"	
WH1	#4	2	STR	19'-4"	
WH2	#4	12	STR	10'-1 1/2" AVG.	3'-2" TO 17'-1"
WH3	#5	2	STR	19'-5"	
WH4	#4	2	STR	38'-6"	
WH5	#4	12	STR	19'-9" AVG.	5'-7" TO 33'-11"
WH6	#5	2	STR	38'-1"	
WL1	#5	32	BNT	7'-7"	
WL2	#5	15	BNT	4'-10"	
WL3	#5	8	BNT	4'-6 1/2" AVG.	3'-3" TO 5'-10"
WL4	#5	18	BNT	4'-5" AVG.	2'-11" TO 5'-11"
WT1	#4	35	STR	2'-10"	
WT2	#4	5	STR	7'-0"	
WT3	#4	10	STR	5'-2 1/2" AVG.	3'-7" TO 6'-10"
WT4	#4	8	STR	2'-6 1/2" AVG.	1'-3" TO 3'-10"
WT5	#4	20	STR	5'-2 1/2" AVG.	3'-6" TO 6'-11"
WT6	#4	18	STR	2'-5" AVG.	11" TO 3'-11"
WV1	#5	4	STR	7'-0"	
WV2	#5	10	STR	5'-2 1/2" AVG.	3'-7" TO 6'-10"
WV3	#5	20	STR	5'-2 1/2" AVG.	3'-6" TO 6'-11"
U1	#4	2	BNT	2'-4"	

HEADWALL BAR LIST													
ONE HEADWALL SHOWN													
MARK	FORM	5' SPAN			6' SPAN			8' SPAN			10' SPAN		
		SIZE	QTY.	LENGTH	SIZE	QTY.	LENGTH	SIZE	QTY.	LENGTH	SIZE	QTY.	LENGTH
CH	STR	#4	4	21'-4"	#4	4	24'-10"	#4	4	31'-9"	#6	4	38'-8"
CL1	BNT	#4	22	4'-4"	#4	25	4'-4"	#4	32	4'-4"	#5	39	4'-4"
CL2	BNT	#4	22	4'-3"	#4	25	4'-3"	#4	32	4'-3"	#5	39	4'-3"
HD	STR	#6	2	21'-4"	#6	2	24'-10"	#6	2	31'-9"	#8	2	38'-8"

APPROVED BY BRIDGE ENGINEER *Robert J. Muech* DATE 4/09/09

**OKLAHOMA DEPT. OF TRANSPORTATION**  
**BRIDGE STANDARD (ENGLISH)**  
**RCB CULVERTS - END SECTION DETAILS**  
**TRIPLE CELL - 5'-0" HEIGHT - 30°**  
 SHEET NO. 3 OF 3

1999 SPECIFICATIONS      RCB-E3-H5-30-3      OOE  
 B-755E