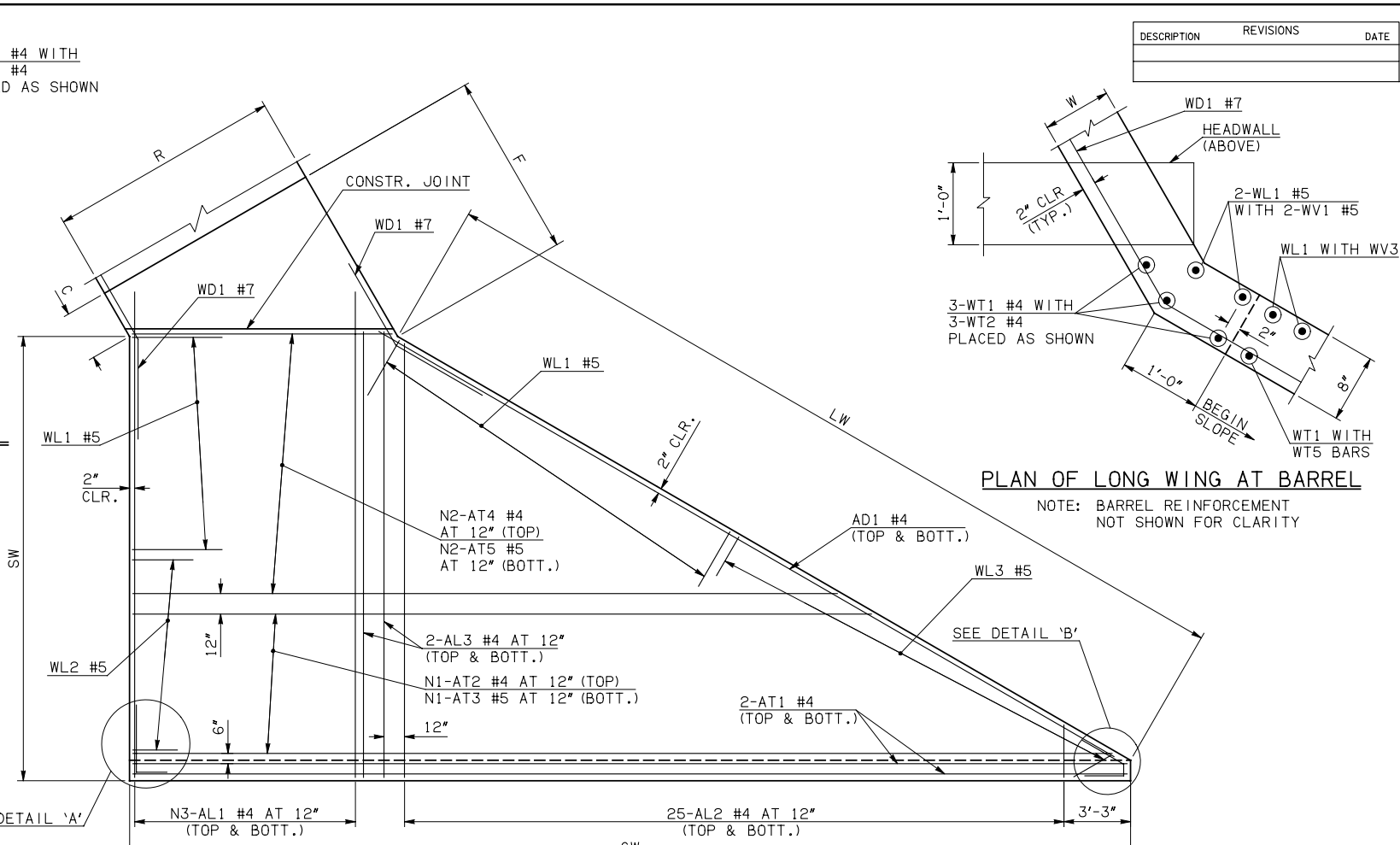
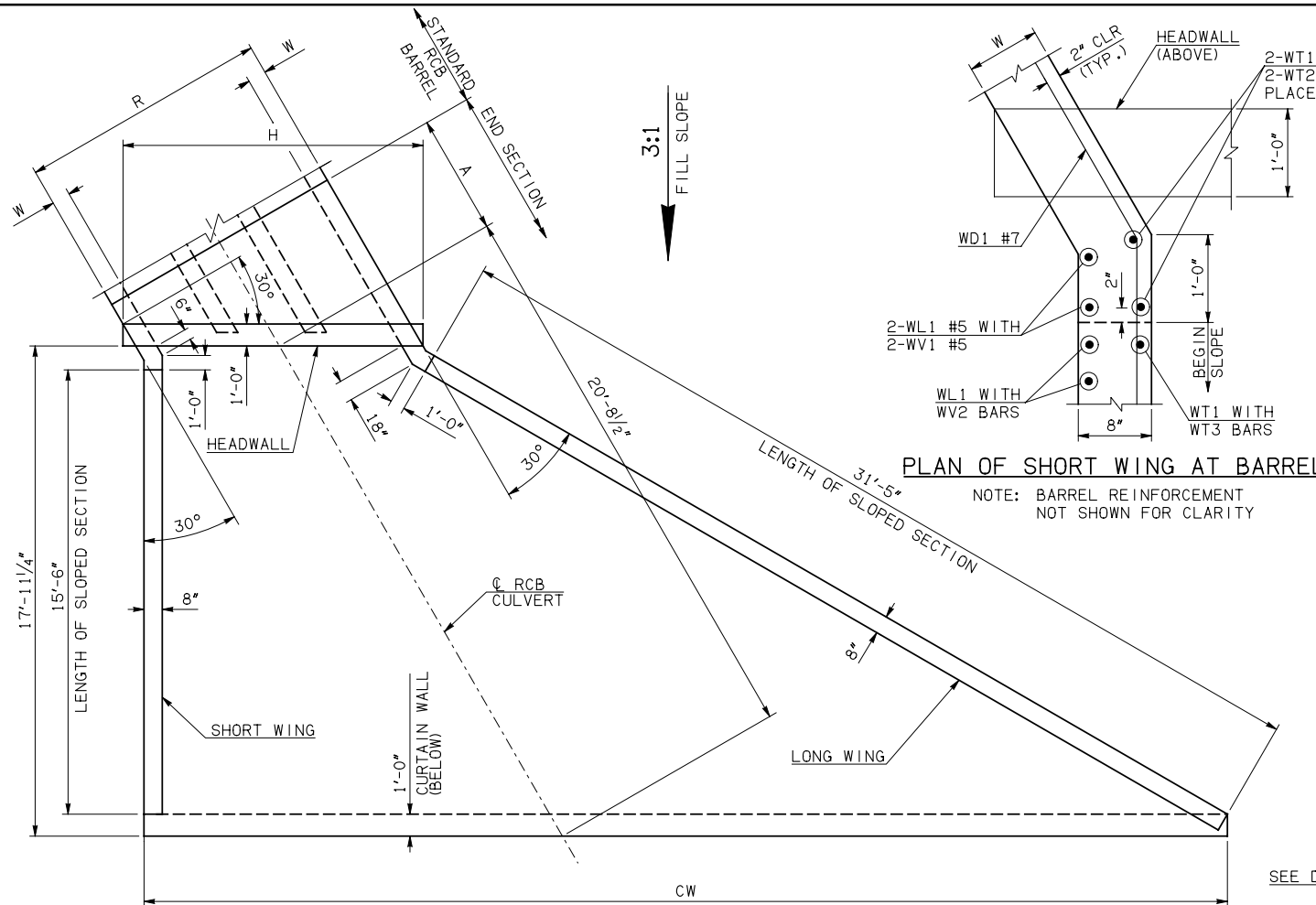


DESCRIPTION	REVISIONS	DATE



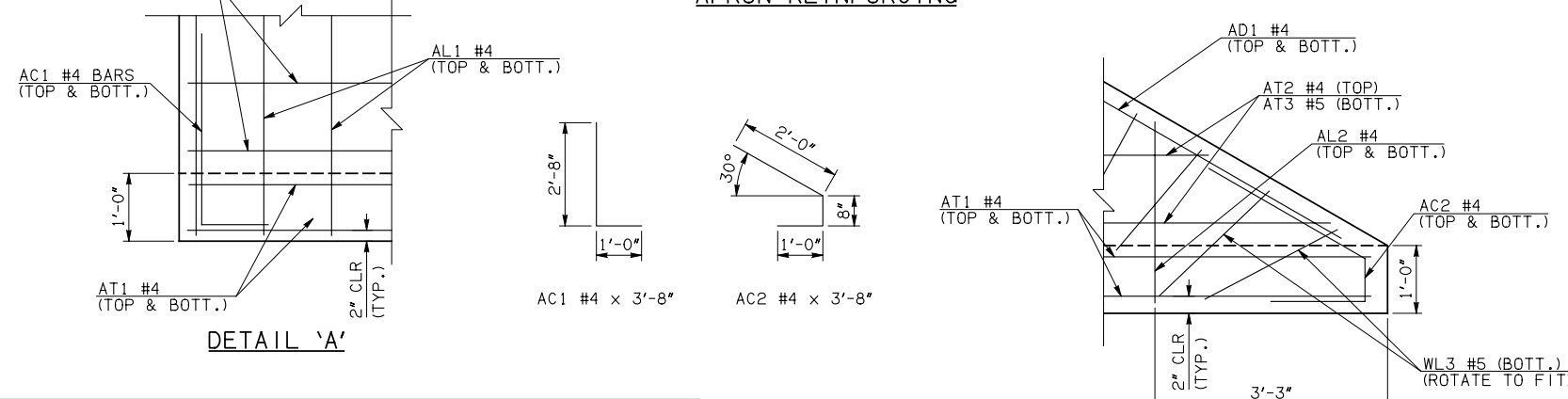
END SECTION PLAN

NOTE: SEE END SECTION DETAILS SHEET NO. 2 OF 3 FOR VARIABLE REINFORCING QUANTITIES.

END SECTION VARIABLE DIMENSIONS

SPAN	W	A	B	C	CW	D	E	F	G	H	LW	R	SW
4'	10"	7'-0"	2'-7"	3'-8"	45'-4 1/4"	3'-6 3/4"	11'-5"	12'-6 3/4"	12'-5 1/4"	18'-3 1/2"	31'-11"	15'-4"	16'-11 3/4"
5'	10"	8'-0"	2'-8 1/2"	3'-9 1/2"	48'-10"	3'-8 1/4"	13'-3 1/2"	14'-5"	14'-3 3/4"	21'-9"	31'-11"	18'-4"	16'-11 3/4"
6'	10"	9'-0"	2'-10"	3'-11 1/4"	52'-3 1/2"	3'-9 3/4"	15'-2"	16'-3 1/2"	16'-2 1/4"	25'-2 1/2"	31'-11"	21'-4"	16'-11 3/4"
8'	10"	10'-0"	2'-1 1/4"	3'-2 1/2"	59'-2 1/2"	3'-1"	17'-10 3/4"	19'-0 1/4"	18'-11"	32'-1 3/4"	31'-11"	27'-4"	16'-11 3/4"
10'	10"	12'-0"	2'-4 1/2"	3'-5 1/2"	66'-1 3/4"	3'-4 1/4"	21'-7 1/2"	22'-9"	22'-7 3/4"	39'-0 3/4"	31'-11"	33'-4"	16'-11 3/4"

APRON REINFORCING



APRON BAR LIST

MARK	SIZE	FORM	ONE APRON SHOWN																
			4' SPAN				5' SPAN				6' SPAN				8' SPAN				10' SPAN
QTY.	LENGTH	REMARKS	QTY.	LENGTH	REMARKS	QTY.	LENGTH	REMARKS	QTY.	LENGTH	REMARKS	QTY.	LENGTH	REMARKS	QTY.	LENGTH	REMARKS		
AC1	#4	BNT	2	3'-8"		2	3'-8"		2	3'-8"		2	3'-8"		2	3'-8"			
AC2	#4	BNT	2	3'-8"		2	3'-8"		2	3'-8"		2	3'-8"		2	3'-8"			
AD1	#4	STR	2	33'-6"		2	33'-6"		2	33'-6"		2	33'-6"		2	33'-6"			
AL1	#4	STR	32	19'-9"		40	19'-9"		46	19'-9"		60	19'-9"		74	19'-9"			
AL2	#4	STR	50	9'-5" AVG.	2'-6" TO 16'-4"	50	9'-5" AVG.	2'-6" TO 16'-4"	50	9'-5" AVG.	2'-6" TO 16'-4"	50	9'-5" AVG.	2'-6" TO 16'-4"	50	9'-5" AVG.	2'-6" TO 16'-4"		
AL3	#4	STR	4	17'-9"		4	17'-9"		4	17'-9"		4	17'-9"		4	17'-9"			
AT1	#4	STR	4	45'-0"		4	48'-5"		4	51'-11"		4	58'-10"		4	68'-3"	①		
AT2	#4	STR	17	30'-4 1/2" AVG.	16'-6" TO 44'-3"	17	33'-10" AVG.	20'-0" TO 47'-8"	17	37'-3 1/2" AVG.	23'-5" TO 51'-2"	17	44'-3" AVG.	30'-5" TO 58'-1"	3	65'-9 1/2" AVG.	① 64'-1" TO 67'-6"		
AT3	#5	STR	17	30'-4 1/2" AVG.	16'-6" TO 44'-3"	17	33'-10" AVG.	20'-0" TO 47'-8"	17	37'-3 1/2" AVG.	23'-5" TO 51'-2"	17	44'-3" AVG.	30'-5" TO 58'-1"	3	65'-9 1/2" AVG.	① 64'-1" TO 67'-6"		
AT4	#4	STR	0			0			0			0			14	48'-7" AVG.	37'-4" TO 59'-10"		
AT5	#5	STR	0			0			0			0			14	48'-7" AVG.	37'-4" TO 59'-10"		

① INCLUDES 2'-6" LAP
② QUANTITY SHOWN REPRESENTS TWO SETS.

APPROVED BY BRIDGE ENGINEER *Robert J. Nisch* DATE 4/09/09

OKLAHOMA DEPT. OF TRANSPORTATION
BRIDGE STANDARD (ENGLISH)
RCB CULVERTS - END SECTION DETAILS
TRIPLE CELL - 4'-0" HEIGHT - 30°
 SHEET NO. 1 OF 3

1999 SPECIFICATIONS RCB-E3-H4-30-1 OOE B-750E