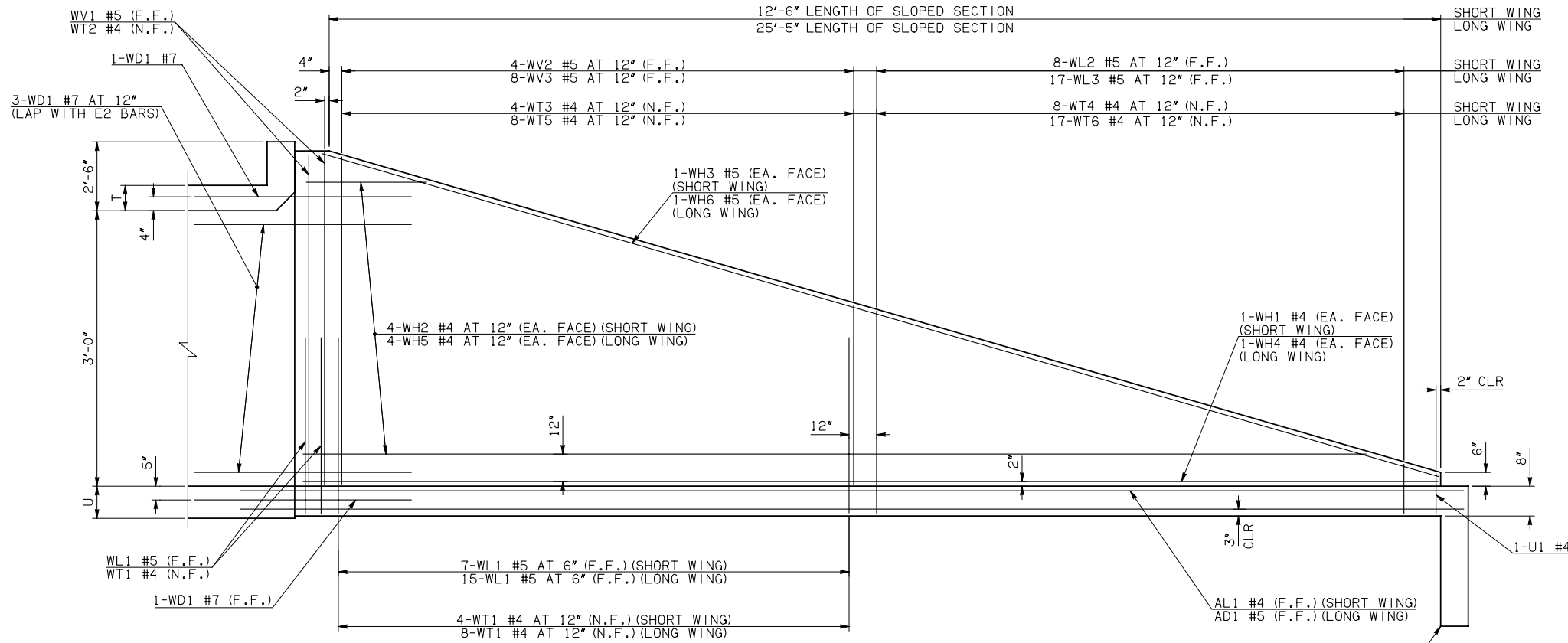
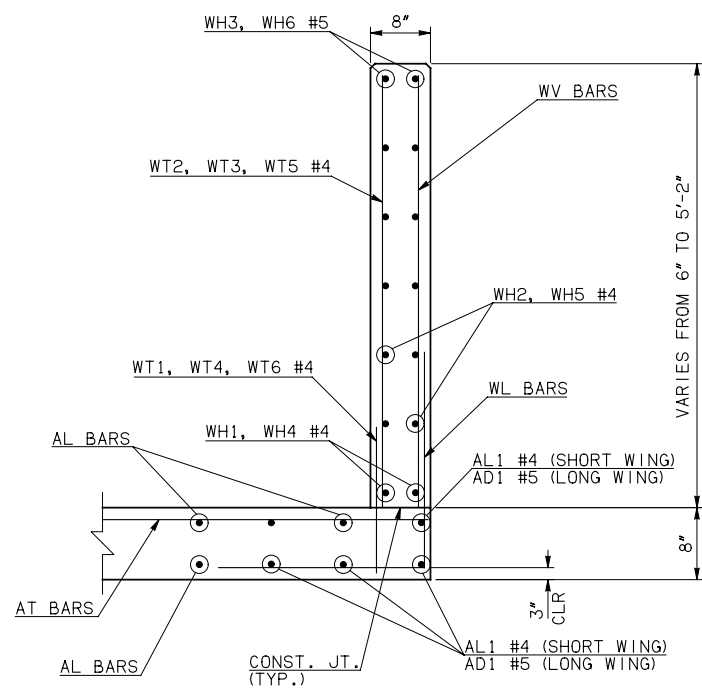


DESCRIPTION	REVISIONS	DATE



NOTE: F.F. = FAR FACE  
N.F. = NEAR FACE

**WING ELEVATION**

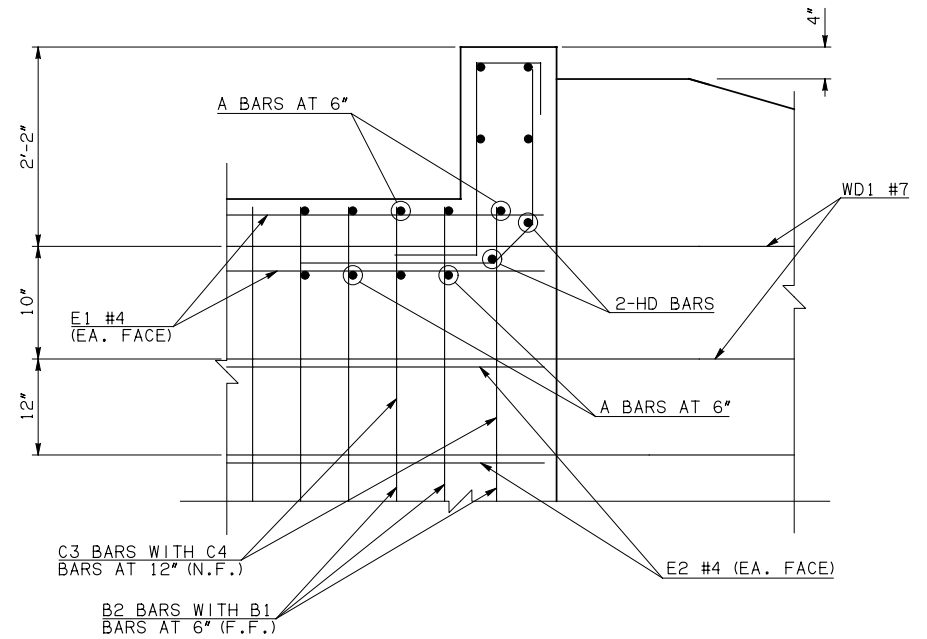


**TYPICAL SECTION THRU WING**

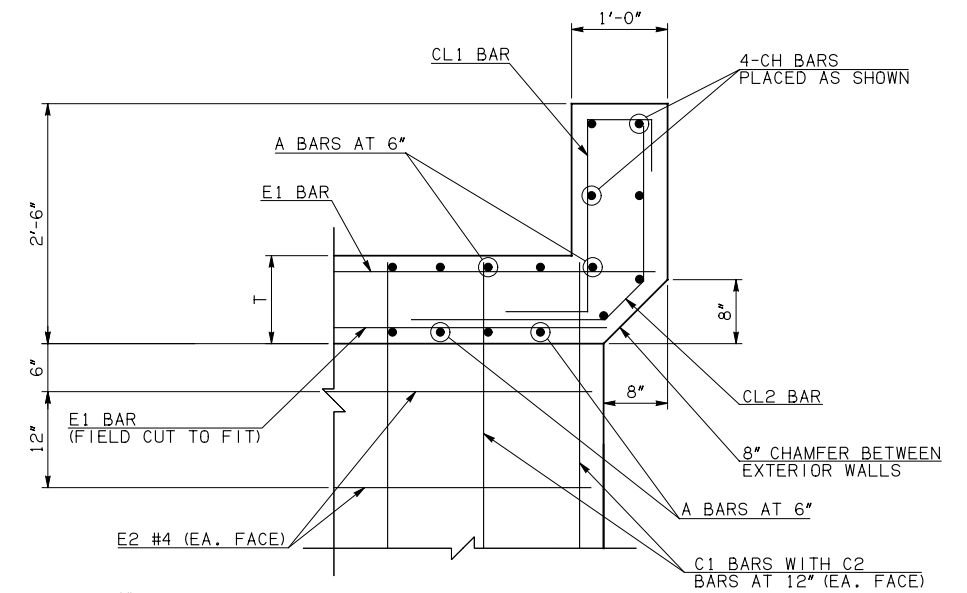
WINGWALL BAR LIST (LONG AND SHORT WING INCLUDED)					
MARK	SIZE	QTY.	FORM	LENGTH	REMARKS
WD1	#7	10	BNT	8'-4"	
WH1	#4	2	STR	13'-4"	
② WH2	#4	8	STR	7'-2" AVG.	3'-2" TO 11'-2"
WH3	#5	2	STR	13'-1"	
WH4	#4	2	STR	26'-3"	
② WH5	#4	8	STR	13'-7 1/2" AVG.	5'-5" TO 21'-10"
WH6	#5	2	STR	25'-8"	
WL1	#5	26	BNT	6'-1"	
WL2	#5	8	BNT	4'-5 1/2" AVG.	3'-2" TO 5'-9"
WL3	#5	17	BNT	4'-4 1/2" AVG.	2'-11" TO 5'-10"
WT1	#4	17	STR	2'-10"	
WT2	#4	5	STR	5'-0"	
WT3	#4	4	STR	4'-3" AVG.	3'-8" TO 4'-10"
WT4	#4	8	STR	2'-5 1/2" AVG.	1'-2" TO 3'-9"
WT5	#4	8	STR	4'-3" AVG.	3'-7" TO 4'-11"
WT6	#4	17	STR	2'-4 1/2" AVG.	11" TO 3'-10"
WV1	#5	4	STR	5'-0"	
WV2	#5	4	STR	4'-3" AVG.	3'-8" TO 4'-10"
WV3	#5	8	STR	4'-3" AVG.	3'-7" TO 4'-11"
U1	#4	2	BNT	1'-10"	

**HEADWALL BAR LIST**

ONE HEADWALL SHOWN																
MARK	FORM	4' SPAN			5' SPAN			6' SPAN			8' SPAN			10' SPAN		
		SIZE	QTY.	LENGTH	SIZE	QTY.	LENGTH	SIZE	QTY.	LENGTH	SIZE	QTY.	LENGTH	SIZE	QTY.	LENGTH
CH	STR	#4	4	17'-11"	#4	4	21'-4"	#4	4	24'-10"	#4	4	31'-9"	#6	4	38'-8"
CL1	BNT	#4	18	4'-4"	#4	22	4'-4"	#4	25	4'-4"	#4	32	4'-4"	#5	39	4'-4"
CL2	BNT	#4	18	4'-3"	#4	22	4'-3"	#4	25	4'-3"	#4	32	4'-3"	#5	39	4'-3"
HD	STR	#6	2	17'-11"	#6	2	21'-4"	#6	2	24'-10"	#6	2	31'-9"	#8	2	38'-8"



**HEADWALL DETAIL AT EXTERIOR WALL**



**HEADWALL DETAIL AT INTERIOR WALL**  
DIMENSION SHOWN NORMAL TO HEADWALL

NOTES:  
② QUANTITY SHOWN REPRESENTS TWO SETS.  
③ FOR FURTHER INFORMATION REGARDING END SECTION BARS A, B, C, E1, AND E2, REFER TO RCB CULVERT - BARREL DETAILS.

APPROVED BY BRIDGE ENGINEER *Robert J. Muech* DATE 4/09/09

**OKLAHOMA DEPT. OF TRANSPORTATION**  
**BRIDGE STANDARD (ENGLISH)**  
**RCB CULVERTS - END SECTION DETAILS**  
**TRIPLE CELL - 3'-0" HEIGHT - 30°**  
SHEET NO. 3 OF 3