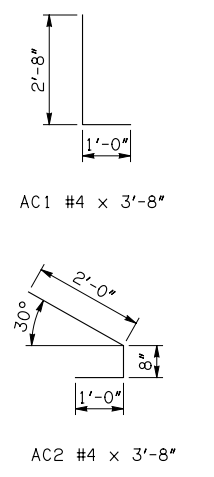


**APRON BAR LIST**

ONE APRON SHOWN

MARK	SIZE	FORM	4' SPAN			5' SPAN			6' SPAN			8' SPAN			10' SPAN		
			QTY.	LENGTH	REMARKS	QTY.	LENGTH	REMARKS	QTY.	LENGTH	REMARKS	QTY.	LENGTH	REMARKS	QTY.	LENGTH	REMARKS
AC1	#4	BNT	2	3'-8"		2	3'-8"		2	3'-8"		2	3'-8"		2	3'-8"	
AD1	#5	STR	4	27'-6"		4	27'-6"		4	27'-6"		4	27'-6"		4	27'-6"	
AL1	#4	STR	32	16'-9"		40	16'-9"		46	16'-9"		60	16'-9"		74	16'-9"	
AL2	#4	STR	40	7'-11 1/2" AVG.	2'-6" TO 13'-5"	40	7'-11 1/2" AVG.	2'-6" TO 13'-5"	40	7'-11 1/2" AVG.	2'-6" TO 13'-5"	40	7'-11 1/2" AVG.	2'-6" TO 13'-5"	40	7'-11 1/2" AVG.	2'-6" TO 13'-5"
AL3	#4	STR	4	14'-9"		4	14'-9"		4	14'-9"		4	14'-9"		4	14'-9"	
AT1	#4	STR	4	39'-9"		4	43'-3"		4	46'-9"		4	53'-8"		4	63'-1"	①
AT2	#4	STR	14	27'-9 1/2" AVG.	16'-6" TO 39'-1"	14	31'-3" AVG.	20'-0" TO 42'-6"	14	34'-8 1/2" AVG.	23'-5" TO 46'-0"	14	41'-8" AVG.	30'-5" TO 52'-11"	14	48'-7" AVG.	37'-4" TO 59'-10"

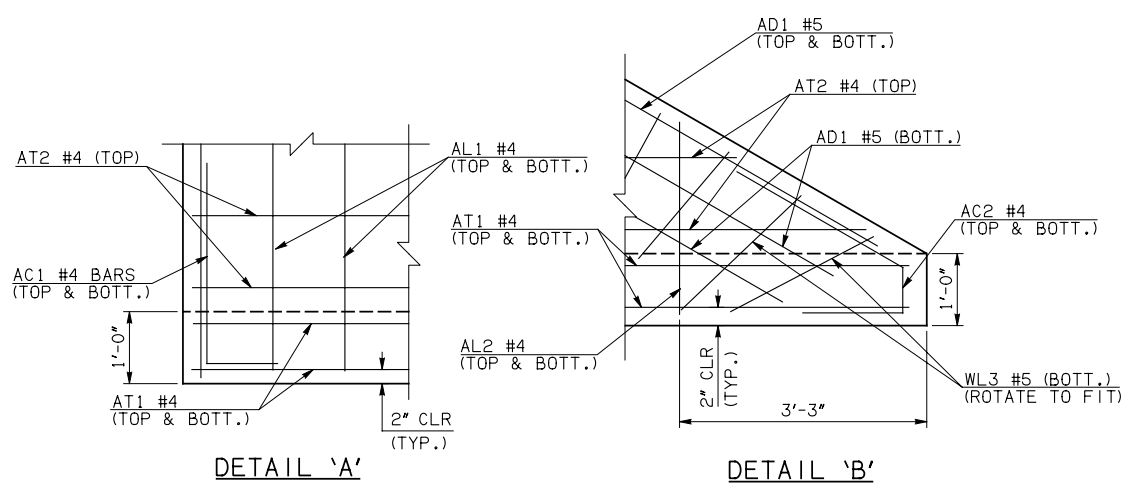


- ① INCLUDES 2'-6" LAP
- ② QUANTITY SHOWN REPRESENTS TWO SETS.

NOTE: SEE END SECTION DETAILS SHEET NO. 2 OF 3 FOR VARIABLE REINFORCING QUANTITIES.

**END SECTION VARIABLE DIMENSIONS**

SPAN	W	A	B	C	CW	D	E	F	G	H	LW	R	SW
4'	10"	7'-0"	2'-7"	3'-8"	40'-2"	3'-6 3/4"	11'-5"	12'-6 3/4"	12'-5 1/4"	18'-3 1/2"	25'-11"	15'-4"	13'-11 3/4"
5'	10"	8'-0"	2'-8 1/2"	3'-9 1/2"	43'-7 1/2"	3'-8 1/4"	13'-3 1/2"	14'-5"	14'-3 3/4"	21'-9"	25'-11"	18'-4"	13'-11 3/4"
6'	10"	9'-0"	2'-10"	3'-11 1/4"	47'-1"	3'-9 3/4"	15'-2"	16'-3 1/2"	16'-2 1/4"	25'-2 1/2"	25'-11"	21'-4"	13'-11 3/4"
8'	10"	10'-0"	2'-1 1/4"	3'-2 1/2"	54'-0 1/4"	3'-1"	17'-10 3/4"	19'-0 1/4"	18'-11"	32'-1 3/4"	25'-11"	27'-4"	13'-11 3/4"
10'	10"	12'-0"	2'-4 1/2"	3'-5 1/2"	60'-11 1/2"	3'-4 1/4"	21'-7 1/2"	22'-9"	22'-7 3/4"	39'-0 3/4"	25'-11"	33'-4"	13'-11 3/4"



APPROVED BY BRIDGE ENGINEER *Robert J. Nusch* DATE 4/09/09

**OKLAHOMA DEPT. OF TRANSPORTATION**  
**BRIDGE STANDARD (ENGLISH)**  
 RCBC CULVERTS - END SECTION DETAILS  
 TRIPLE CELL - 3'-0" HEIGHT - 30°  
 SHEET NO. 1 OF 3

1999 SPECIFICATIONS | RCB-E3-H3-30-1 | OOE | B-747E