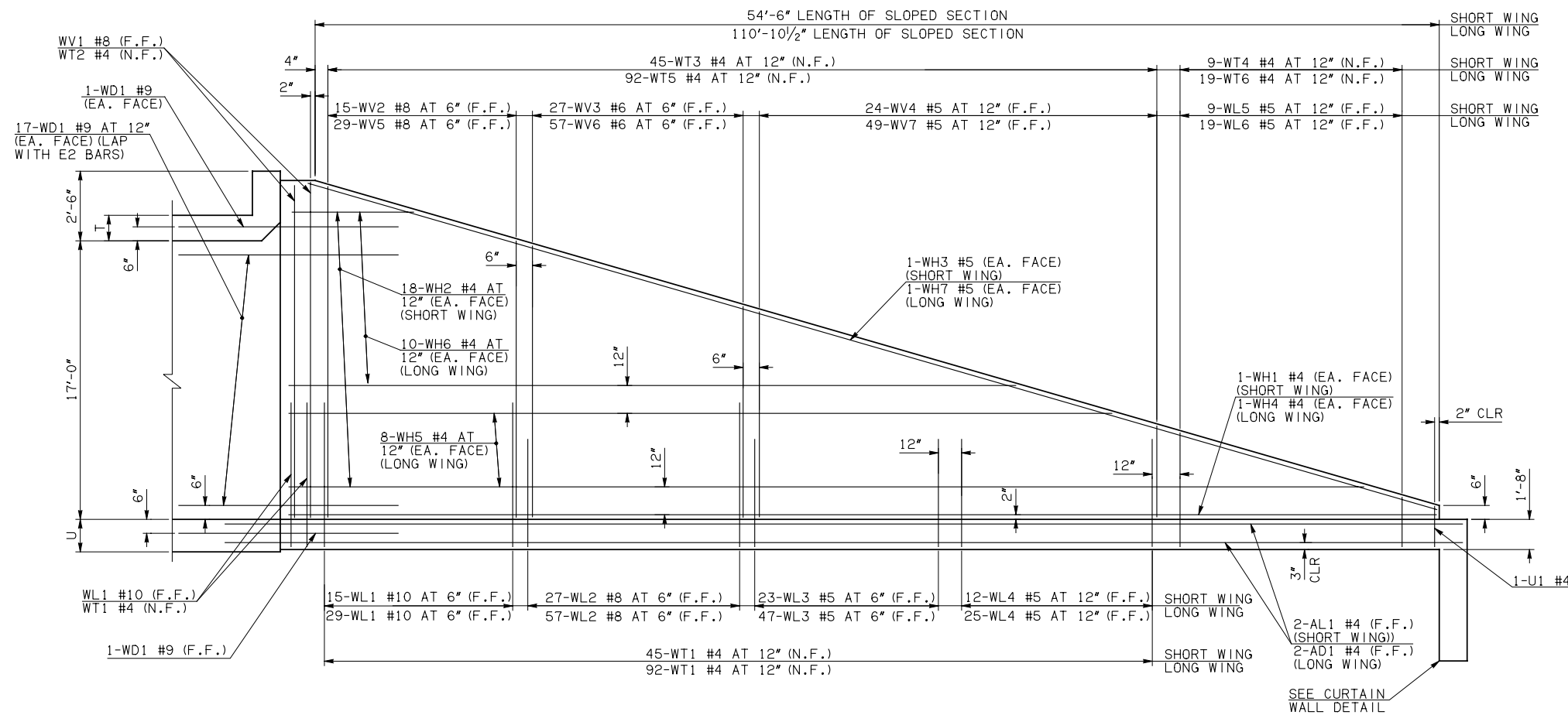
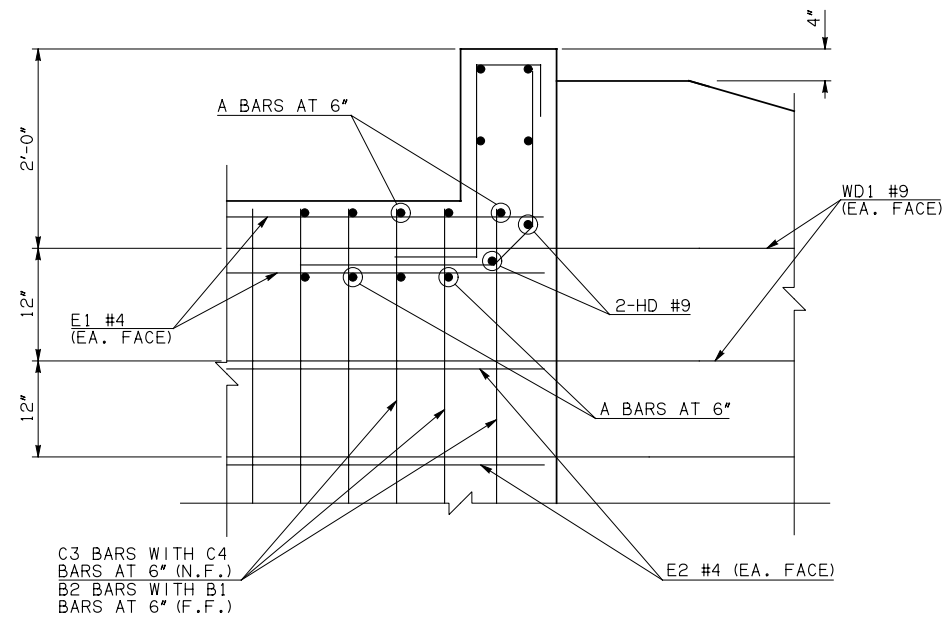


DESCRIPTION	REVISIONS	DATE

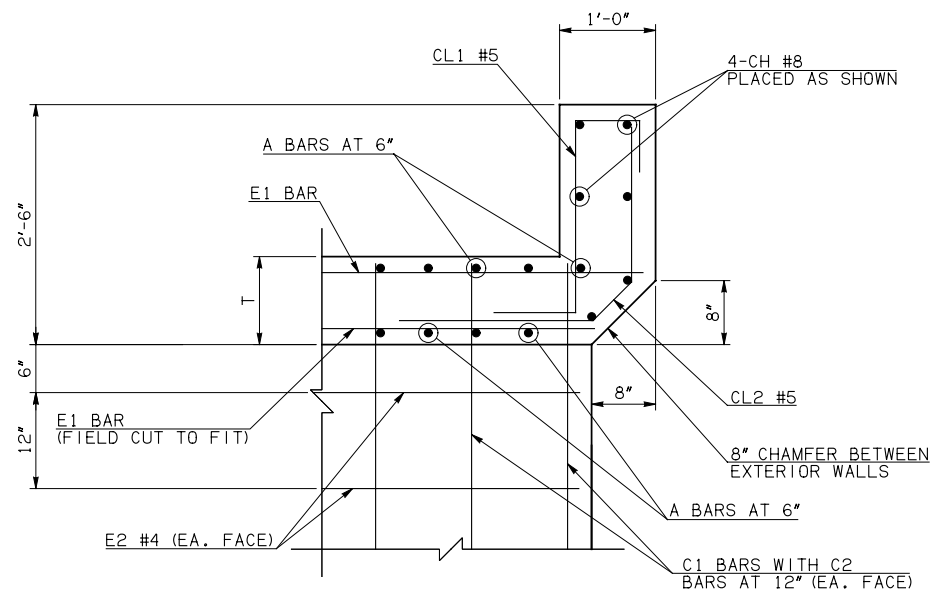


NOTE: F.F. = FAR FACE  
N.F. = NEAR FACE

WING ELEVATION



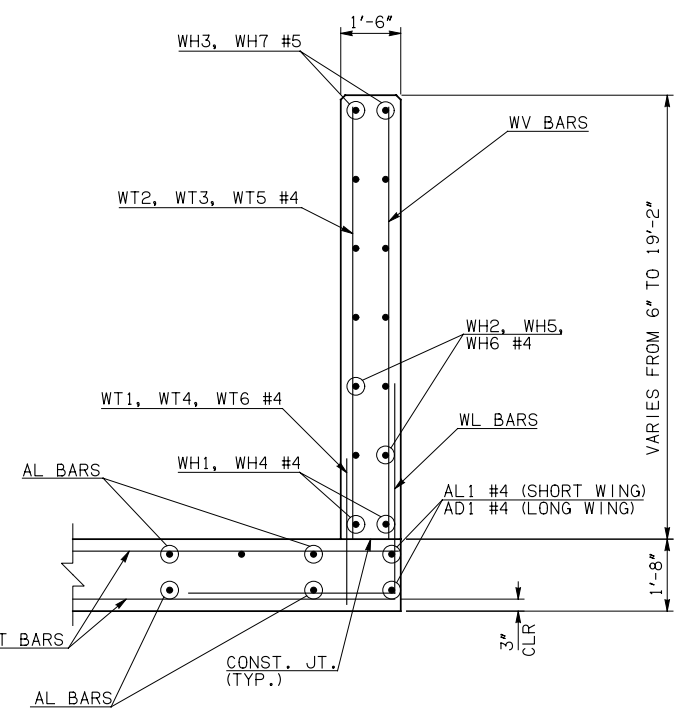
④ HEADWALL DETAIL AT EXTERIOR WALL



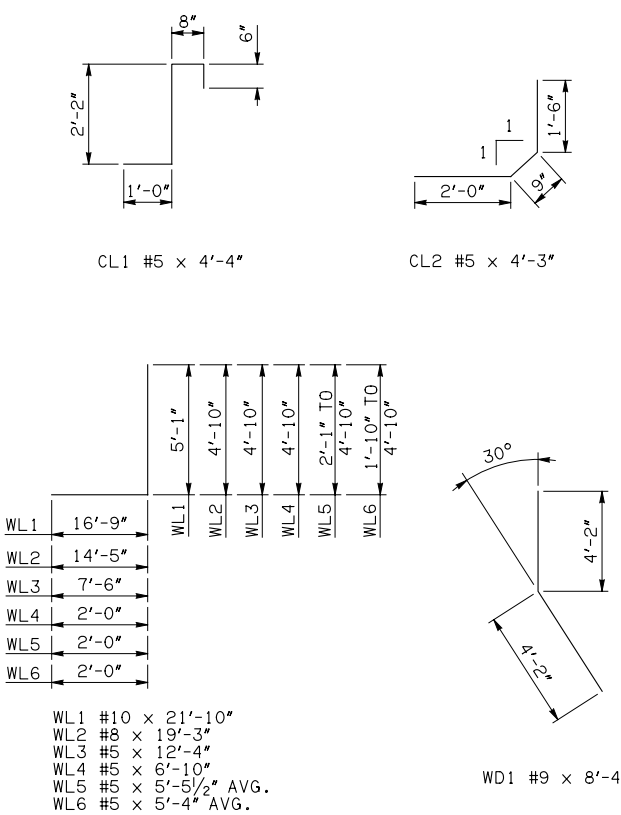
④ HEADWALL DETAIL AT INTERIOR WALL  
DIMENSION SHOWN NORMAL TO HEADWALL

- NOTES:
- ① INCLUDES 2'-6" LAP.
  - ③ QUANTITY SHOWN REPRESENTS TWO SETS.
  - ④ FOR FURTHER INFORMATION REGARDING END SECTION BARS A, B, C, E1, AND E2, REFER TO RCB CULVERT - BARREL DETAILS.

WINGWALL BAR LIST (LONG AND SHORT WING INCLUDED)					
MARK	SIZE	QTY.	FORM	LENGTH	REMARKS
WD1	#9	74	BNT	8'-4"	
WH1	#4	2	STR	55'-4"	
WH2	#4	36	STR	28'-2" AVG.	3'-4" TO 53'-0"
WH3	#5	2	STR	57'-5"	
WH4	#4	2	STR	114'-2"	
WH5	#4	16	STR	88'-6 1/2" AVG.	67'-9" TO 109'-4"
WH6	#4	20	STR	32'-7" AVG.	5'-10" TO 59'-4"
WH7	#5	2	STR	114'-9"	
WL1	#10	48	BNT	21'-10"	
WL2	#8	84	BNT	19'-3"	
WL3	#5	70	BNT	12'-4"	
WL4	#5	37	BNT	6'-10"	
WL5	#5	9	BNT	5'-5 1/2" AVG.	4'-1" TO 6'-10"
WL6	#5	19	BNT	5'-4" AVG.	3'-10" TO 6'-10"
WT1	#4	142	STR	3'-6"	
WT2	#4	5	STR	19'-0"	
WT3	#4	45	STR	11'-3 1/2" AVG.	3'-9" TO 18'-10"
WT4	#4	9	STR	3'-5 1/2" AVG.	2'-1" TO 4'-10"
WT5	#4	92	STR	11'-3" AVG.	3'-7" TO 18'-11"
WT6	#4	19	STR	3'-4" AVG.	1'-10" TO 4'-10"
WV1	#8	4	STR	19'-0"	
WV2	#8	15	STR	17'-7 1/2" AVG.	16'-5" TO 18'-10"
WV3	#6	27	STR	14'-0 1/2" AVG.	11'-10" TO 16'-3"
WV4	#5	24	STR	7'-8 1/2" AVG.	3'-9" TO 11'-8"
WV5	#8	29	STR	17'-9" AVG.	16'-7" TO 18'-11"
WV6	#6	57	STR	14'-1 1/2" AVG.	11'-9" TO 16'-6"
WV7	#5	49	STR	7'-7 1/2" AVG.	3'-7" TO 11'-8"
U1	#4	2	BNT	4'-8"	



TYPICAL SECTION THRU WING



APPROVED BY BRIDGE ENGINEER *Debra J. Rusch* DATE 4/09/09

OKLAHOMA DEPT. OF TRANSPORTATION  
BRIDGE STANDARD (ENGLISH)  
RCB CULVERTS - END SECTION DETAILS  
DOUBLE CELL - 17'-0" HEIGHT - 30°  
SHEET NO. 3 OF 3

1999 SPECIFICATIONS	RCB-E2-H17-30-3	OOE
		B-740E