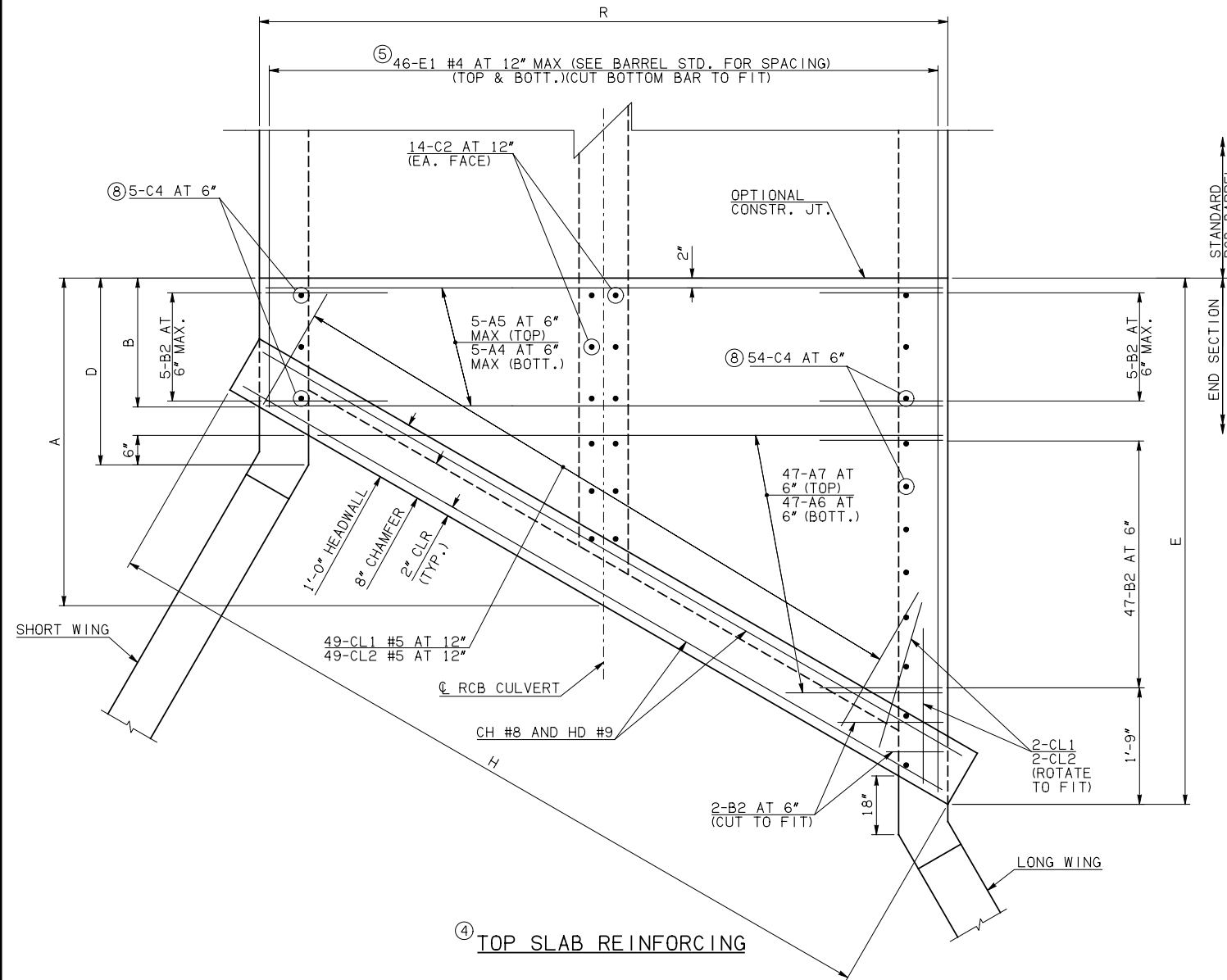
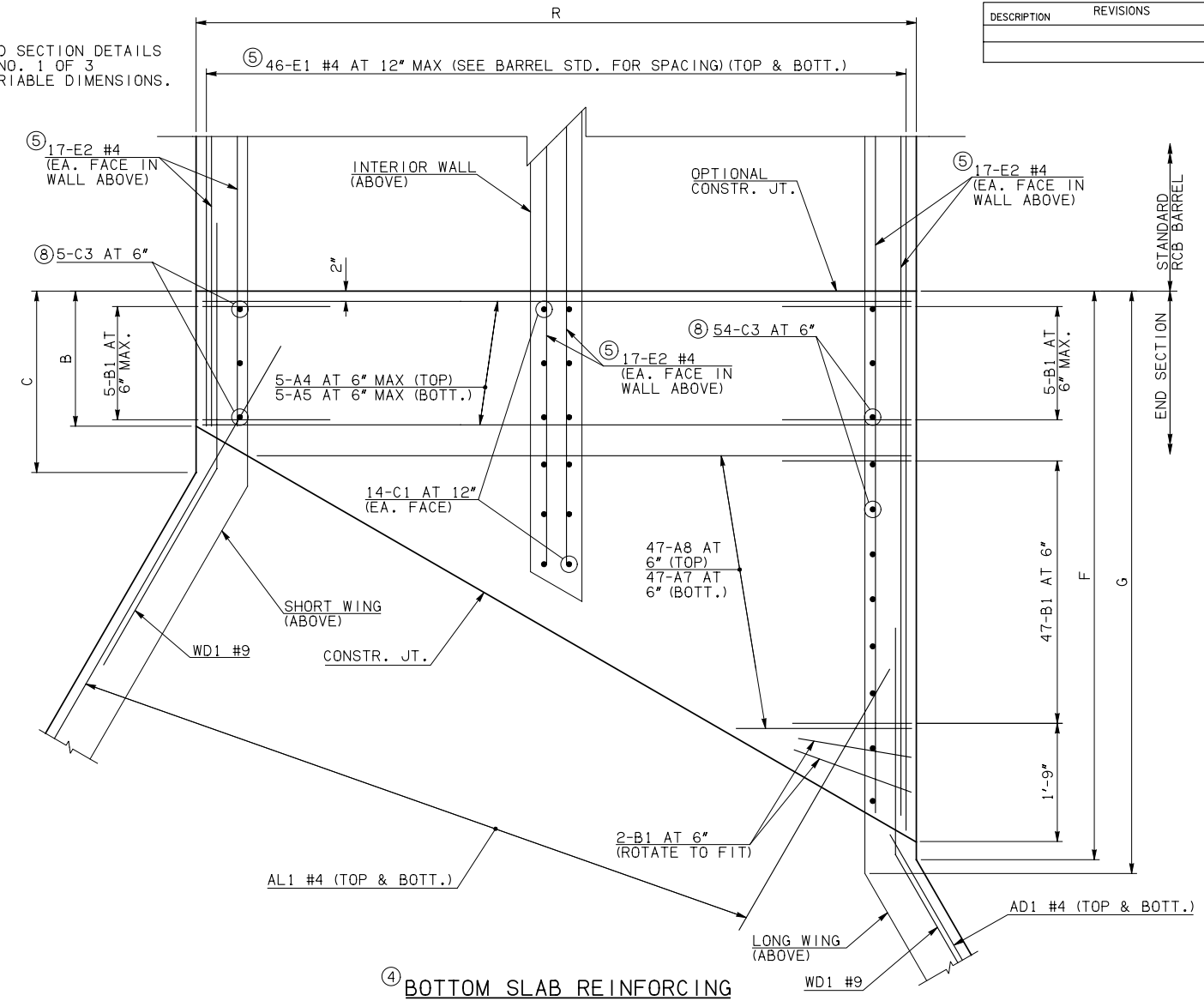


| DESCRIPTION | REVISIONS | DATE |
|-------------|-----------|------|
|             |           |      |



NOTE: SEE END SECTION DETAILS SHEET NO. 1 OF 3 FOR VARIABLE DIMENSIONS.



NOTES: ③ QUANTITY SHOWN REPRESENTS TWO SETS.

④ FOR FURTHER INFORMATION REGARDING END SECTION A, B, C, AND E BARS REFER TO RCB CULVERT - BARREL DETAILS.

⑤ LENGTHS OF E1 & E2 BARS SHOWN ARE ADDITIONAL LENGTHS REQUIRED FOR THE END SECTION. LAP SPLICES, AS REQUIRED, SHALL BE IN ACCORDANCE WITH RCB BARREL STANDARD NOTES.

⑥ 4-SETS OF 46-E1 BARS REQUIRED.

⑦ 3-SETS OF 34-E2 BARS REQUIRED WITH LENGTHS AS SHOWN CORRESPONDING TO SHORT EXTERIOR WALL, INTERIOR WALL, AND LONG EXTERIOR WALL.

⑧ C3 AND C4 BAR SIZE AND SPACING MAY DIFFER FROM BARREL SECTION.

### END CONNECTION BAR LIST

| ONE END CONNECTION SHOWN |      |      |      |                 |                        |
|--------------------------|------|------|------|-----------------|------------------------|
| 20' SPAN                 |      |      |      |                 |                        |
| MARK                     | FORM | SIZE | QTY. | LENGTH          | REMARKS                |
| A4                       | STR  | #8   | 10   | 43'-2"          |                        |
| A5                       | STR  | #10  | 10   | 43'-2"          |                        |
| A6                       | STR  | #9   | 47   | 21'-3" AVG.     | 1'-4" TO 41'-2"        |
| ③ A7                     | STR  | #10  | 94   | 22'-5" AVG.     | 2'-6" TO 42'-4"        |
| A8                       | STR  | #9   | 47   | 22'-5" AVG.     | 2'-6" TO 42'-4"        |
| B1                       | BNT  | #8   | 59   | 8'-4"           |                        |
| B2                       | BNT  | #8   | 59   | 22'-1"          |                        |
| C1                       | STR  | #4   | 28   | 2'-8"           |                        |
| C2                       | STR  | #4   | 28   | 18'-4"          |                        |
| ⑧ C3                     | STR  | #5   | 59   | 3'-0"           |                        |
| ⑧ C4                     | STR  | #5   | 59   | 18'-4"          |                        |
| ⑥ E1                     | STR  | #4   | 184  | 14'-9 1/2" AVG. | 2'-4" TO 27'-3"        |
| ⑦ E2                     | STR  | #4   | 102  | 14'-3 1/2" AVG. | 2'-4", 13'-10", 26'-8" |

### QUANTITIES

| ITEM              | UNIT | 20' SPAN |
|-------------------|------|----------|
| CLASS AA CONCRETE | CY   | 551.50   |
| REINFORCING STEEL | LB   | 68670.00 |

NOTE: QUANTITIES ABOVE ARE FOR ONE END SECTION, WHICH IS COMPRISED OF ONE END CONNECTION, ONE HEADWALL, ONE APRON, AND TWO WINGWALLS.

APPROVED BY BRIDGE ENGINEER *Robert J. Nisch* DATE 4/09/09

OKLAHOMA DEPT. OF TRANSPORTATION  
BRIDGE STANDARD (ENGLISH)  
RCB CULVERTS - END SECTION DETAILS  
DOUBLE CELL - 17'-0" HEIGHT - 30"  
SHEET NO. 2 OF 3