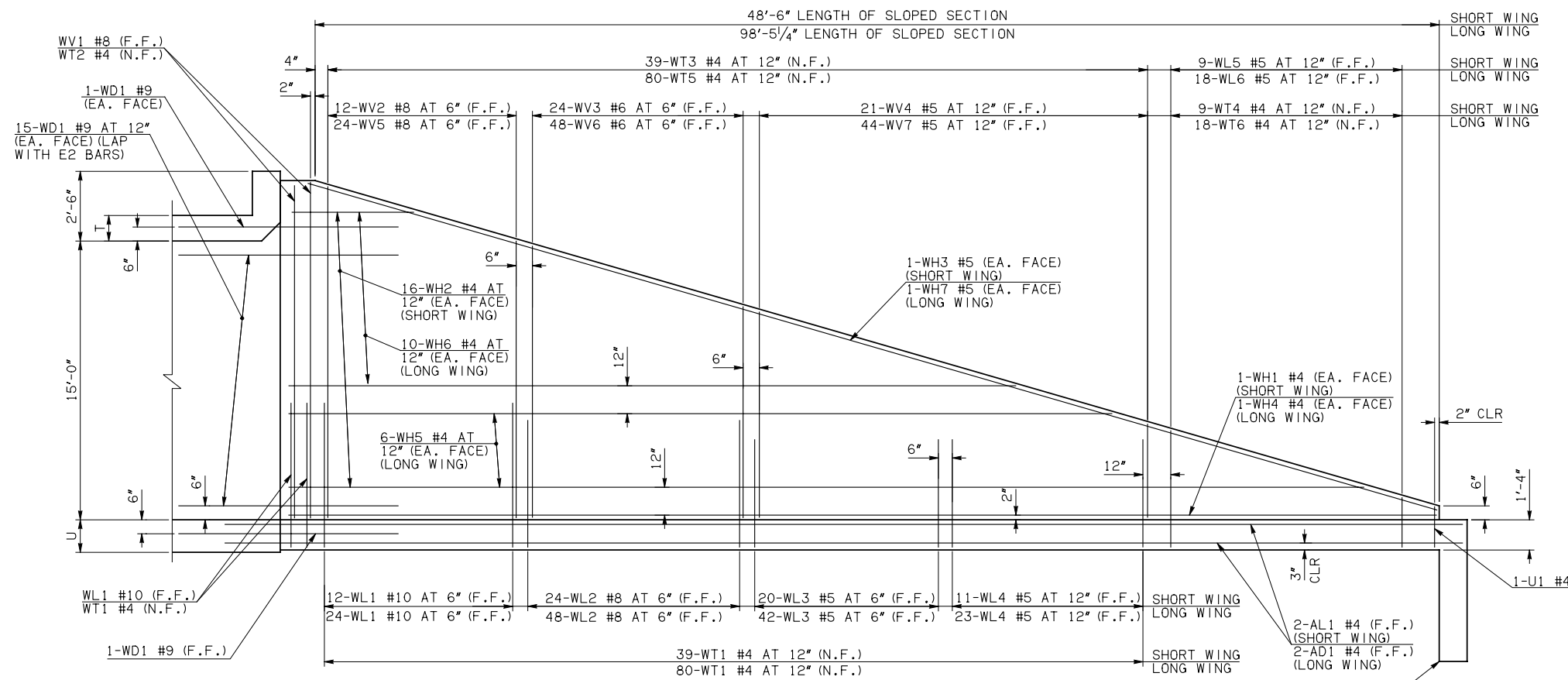
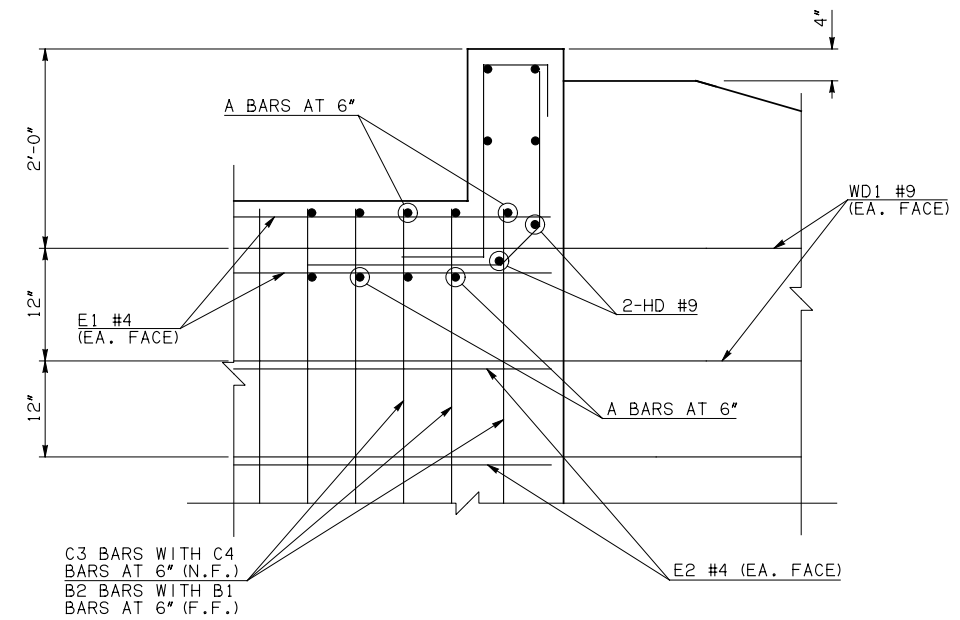


DESCRIPTION	REVISIONS	DATE

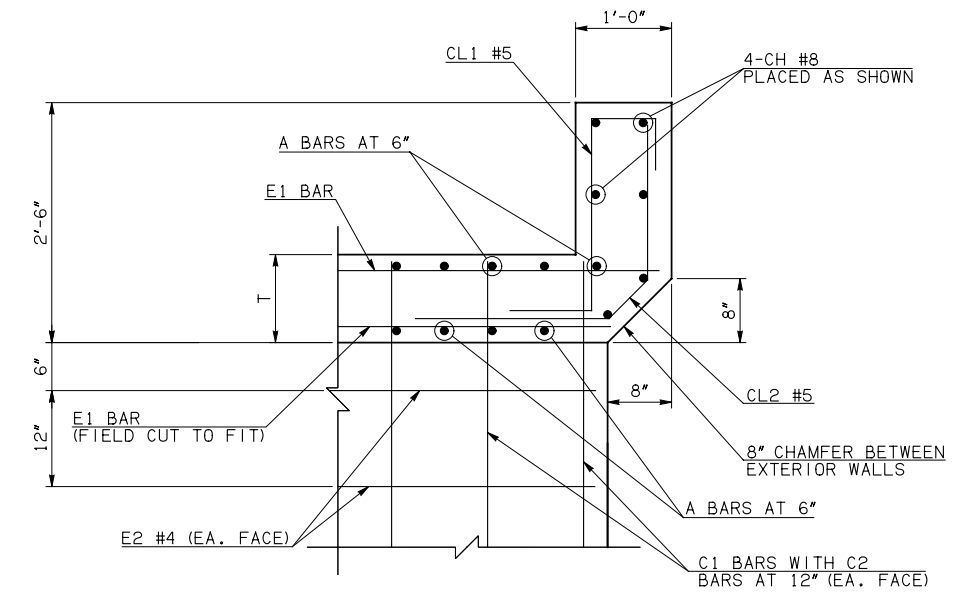


NOTE: F.F. = FAR FACE
N.F. = NEAR FACE

WING ELEVATION



④ HEADWALL DETAIL AT EXTERIOR WALL



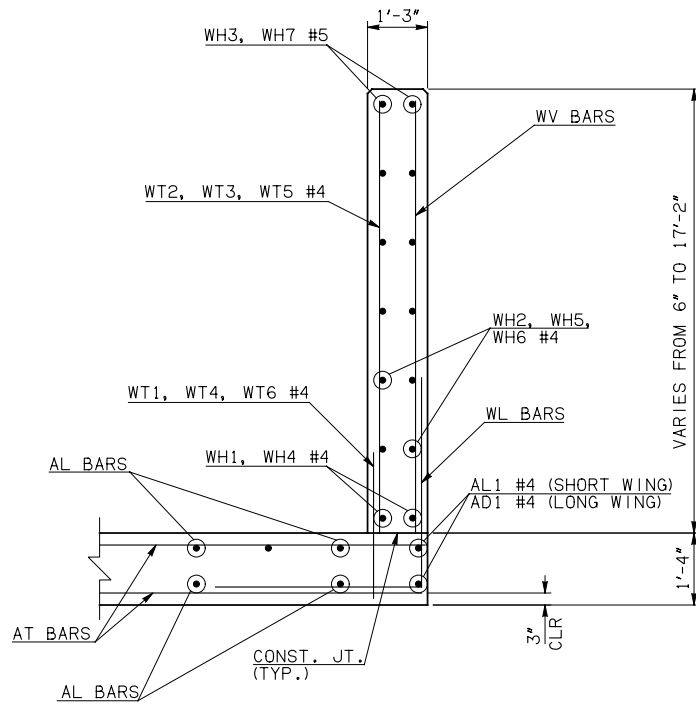
④ HEADWALL DETAIL AT INTERIOR WALL

DIMENSION SHOWN NORMAL TO HEADWALL

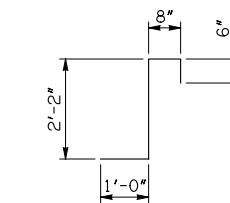
NOTES:

- ① INCLUDES 2'-6" LAP.
- ③ QUANTITY SHOWN REPRESENTS TWO SETS.
- ④ FOR FURTHER INFORMATION REGARDING END SECTION BARS A, B, C, E1, AND E2, REFER TO RCB CULVERT - BARREL DETAILS.

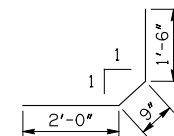
WINGWALL BAR LIST (LONG AND SHORT WING INCLUDED)					
MARK	SIZE	QTY.	FORM	LENGTH	REMARKS
WD1	#9	66	BNT	8'-4"	
WH1	#4	2	STR	49'-4"	
③ WH2	#4	32	STR	25'-2" AVG.	3'-4" TO 47'-0"
① WH3	#5	2	STR	51'-1"	
① WH4	#4	2	STR	101'-9"	
③ WH5	#4	12	STR	82'-2 1/2" AVG.	67'-5" TO 97'-0"
③ WH6	#4	20	STR	32'-5" AVG.	5'-10" TO 59'-0"
① WH7	#5	2	STR	102'-2"	
WL1	#10	40	BNT	21'-1"	
WL2	#8	72	BNT	17'-6"	
WL3	#5	62	BNT	11'-8"	
WL4	#5	34	BNT	5'-8"	
WL5	#5	9	BNT	5'-1 1/2" AVG.	3'-9" TO 6'-6"
WL6	#5	18	BNT	5'-0" AVG.	3'-7" TO 6'-5"
WT1	#4	124	STR	3'-6"	
WT2	#4	5	STR	17'-0"	
WT3	#4	39	STR	10'-3 1/2" AVG.	3'-9" TO 16'-10"
WT4	#4	9	STR	3'-1 1/2" AVG.	1'-9" TO 4'-6"
WT5	#4	80	STR	10'-2 1/2" AVG.	3'-6" TO 16'-11"
WT6	#4	18	STR	3'-0" AVG.	1'-7" TO 4'-5"
WV1	#8	4	STR	17'-0"	
WV2	#8	12	STR	15'-10 1/2" AVG.	14'-11" TO 16'-10"
WV3	#6	24	STR	12'-9 1/2" AVG.	10'-10" TO 14'-9"
WV4	#5	21	STR	7'-2 1/2" AVG.	3'-9" TO 10'-8"
WV5	#8	24	STR	15'-11" AVG.	14'-11" TO 16'-11"
WV6	#6	48	STR	12'-10 1/2" AVG.	10'-11" TO 14'-10"
WV7	#5	44	STR	7'-2" AVG.	3'-6" TO 10'-10"
U1	#4	2	BNT	3'-9"	



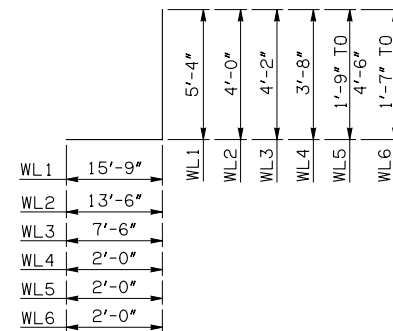
TYPICAL SECTION THRU WING



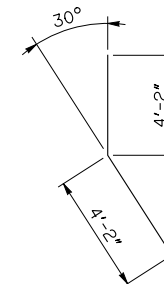
CL1 #5 x 4'-4"



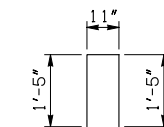
CL2 #5 x 4'-3"



WL1 #10 x 21'-1"
WL2 #8 x 17'-6"
WL3 #5 x 11'-8"
WL4 #5 x 5'-8"
WL5 #5 x 5'-1 1/2" AVG.
WL6 #5 x 5'-0" AVG.



WD1 #9 x 8'-4"



U1 #4 x 3'-9"

APPROVED BY BRIDGE ENGINEER *Robert J. Muech* DATE 4/09/09

OKLAHOMA DEPT. OF TRANSPORTATION
BRIDGE STANDARD (ENGLISH)
RCB CULVERTS - END SECTION DETAILS
DOUBLE CELL - 15'-0" HEIGHT - 30°
SHEET NO. 3 OF 3