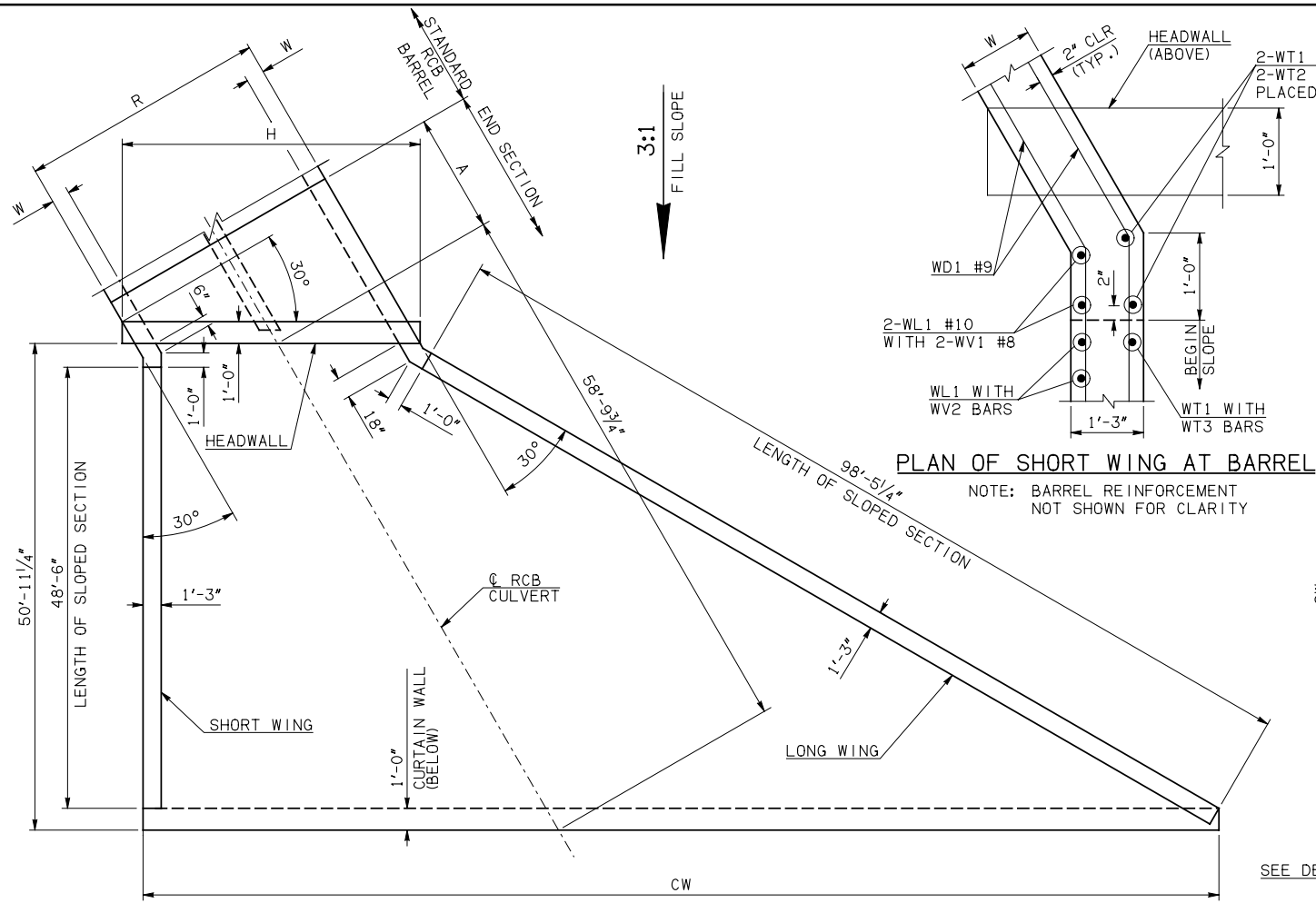
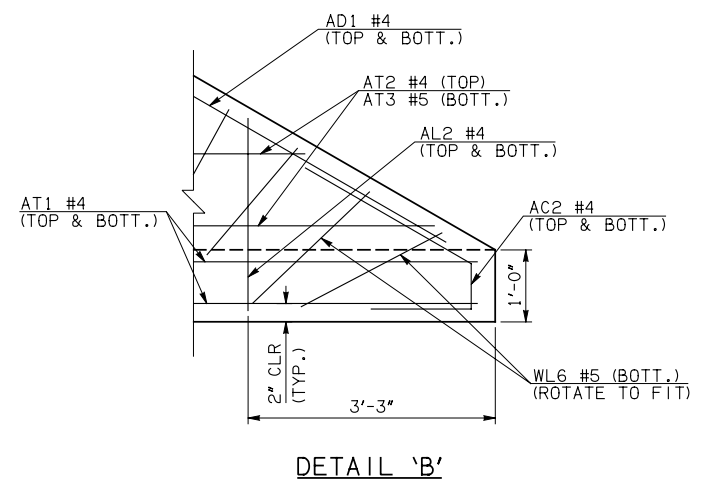
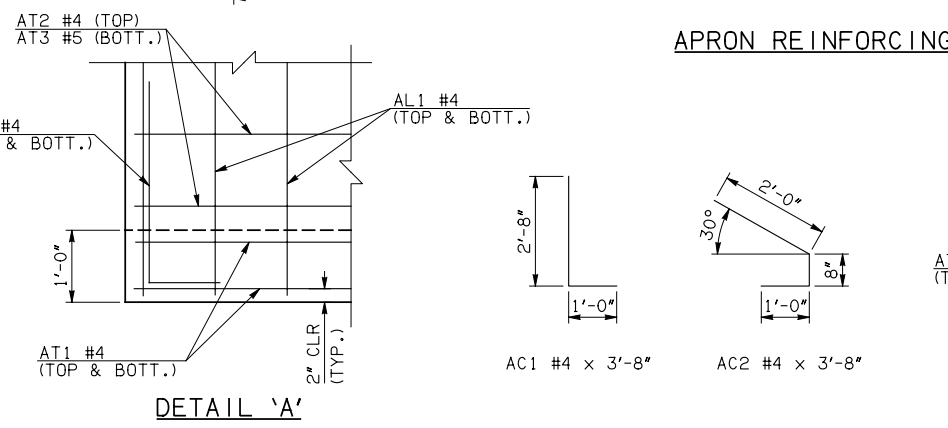


DESCRIPTION	REVISIONS	DATE



END SECTION VARIABLE DIMENSIONS												
SPAN	W	A	B	C	CW	D	E	F	G	H	LW	SW
16'	13"	13'-0"	2'-10 ¹ / ₄ "	3'-4 ¹ / ₄ "	126'-7"	3'-11 ³ / ₄ "	23'-1 ³ / ₄ "	23'-4 ³ / ₄ "	24'-0 ¹ / ₄ "	41'-2 ¹ / ₄ "	99'-5 ¹ / ₄ "	50'-6"
18'	14"	14'-0"	2'-7 ³ / ₄ "	3'-4"	131'-2 ¹ / ₂ "	3'-9 ³ / ₄ "	25'-4 ¹ / ₄ "	25'-8 ¹ / ₂ "	26'-2 ¹ / ₄ "	46'-0"	99'-3 ¹ / ₄ "	50'-4"
20'	15"	15'-0"	2'-5 ¹ / ₄ "	3'-4"	135'-10"	3'-8"	27'-6 ³ / ₄ "	28'-0"	28'-4"	50'-9 ³ / ₄ "	99'-1 ¹ / ₄ "	50'-2"

APRON AND HEADWALL BAR LIST											
ONE APRON AND ONE HEADWALL SHOWN											
MARK	SIZE	FORM	16' SPAN			18' SPAN			20' SPAN		
			QTY.	LENGTH	REMARKS	QTY.	LENGTH	REMARKS	QTY.	LENGTH	REMARKS
AC1	#4	BNT	2	3'-8"		2	3'-8"		2	3'-8"	
AC2	#4	BNT	2	3'-8"		2	3'-8"		2	3'-8"	
AD1	#4	STR	2	102'-0"		2	102'-0"		2	102'-0"	
AL1	#4	STR	78	52'-9"		88	52'-9"		98	52'-9"	
AL2	#4	STR	166	26'-2" AVG.	2'-6" TO 49'-10"	166	26'-2" AVG.	2'-6" TO 49'-10"	166	26'-2" AVG.	2'-6" TO 49'-10"
AL3	#4	STR	4	50'-9"		4	50'-9"		4	50'-9"	
AT1	#4	STR	4	131'-3"		4	135'-10"		4	140'-5"	
AT2	#4	STR	5	127'-0 ¹ / ₂ " AVG.	123'-7" TO 130'-6"	8	129'-0 ¹ / ₂ " AVG.	123'-0" TO 135'-1"	10	131'-11" AVG.	124'-1" TO 139'-9"
AT3	#5	STR	5	127'-0 ¹ / ₂ " AVG.	123'-7" TO 130'-6"	8	129'-0 ¹ / ₂ " AVG.	123'-0" TO 135'-1"	10	131'-11" AVG.	124'-1" TO 139'-9"
AT4	#4	STR	33	91'-7 ¹ / ₂ " AVG.	63'-11" TO 119'-4"	33	91'-0 ¹ / ₂ " AVG.	63'-4" TO 118'-9"	34	91'-4" AVG.	62'-9" TO 119'-11"
AT5	#5	STR	33	91'-7 ¹ / ₂ " AVG.	63'-11" TO 119'-4"	33	91'-0 ¹ / ₂ " AVG.	63'-4" TO 118'-9"	34	91'-4" AVG.	62'-9" TO 119'-11"
AT6	#4	STR	12	50'-1 ¹ / ₂ " AVG.	40'-7" TO 59'-8"	9	52'-2" AVG.	45'-3" TO 59'-1"	6	54'-2" AVG.	49'-10" TO 58'-6"
AT7	#5	STR	12	50'-1 ¹ / ₂ " AVG.	40'-7" TO 59'-8"	9	52'-2" AVG.	45'-3" TO 59'-1"	6	54'-2" AVG.	49'-10" TO 58'-6"
CH	#8	STR	4	40'-10"		4	45'-7"		4	50'-5"	
CL1	#5	BNT	41	4'-4"		46	4'-4"		51	4'-4"	
CL2	#5	BNT	41	4'-3"		46	4'-3"		51	4'-3"	
HD	#9	STR	2	40'-10"		2	45'-7"		2	50'-5"	



- ① INCLUDES 2'-6" LAP.
- ② INCLUDES TWO 2'-6" LAPS.
- ③ QUANTITY SHOWN REPRESENTS TWO SETS.

APPROVED BY BRIDGE ENGINEER *Robert J. Nuss* DATE 4/09/09

OKLAHOMA DEPT. OF TRANSPORTATION
BRIDGE STANDARD (ENGLISH)
 RCB CULVERTS - END SECTION DETAILS
 DOUBLE CELL - 15'-0" HEIGHT - 30°
 SHEET NO. 1 OF 3

1999 SPECIFICATIONS | RCB-E2-H15-30-1 | OOE | B-735E