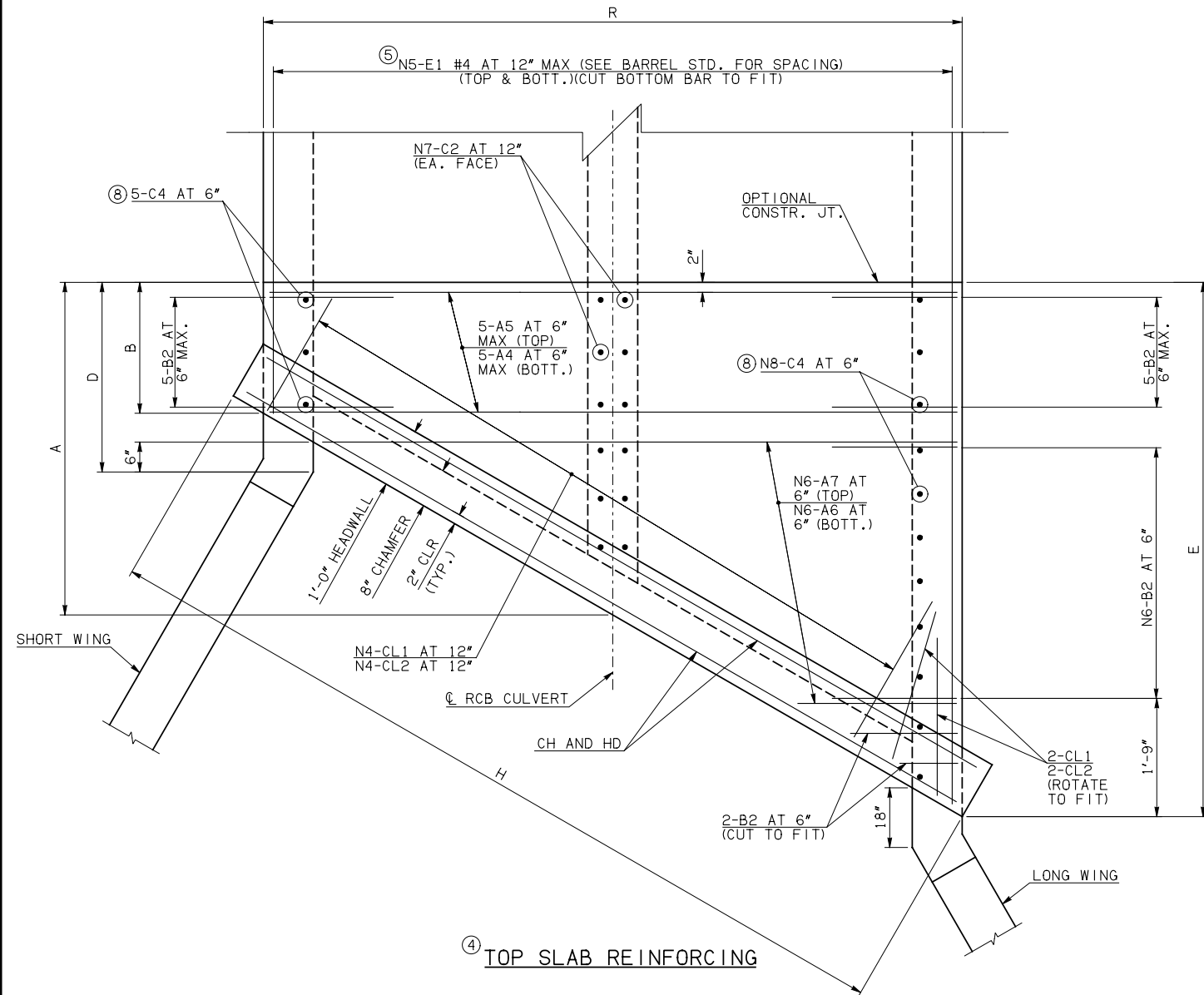
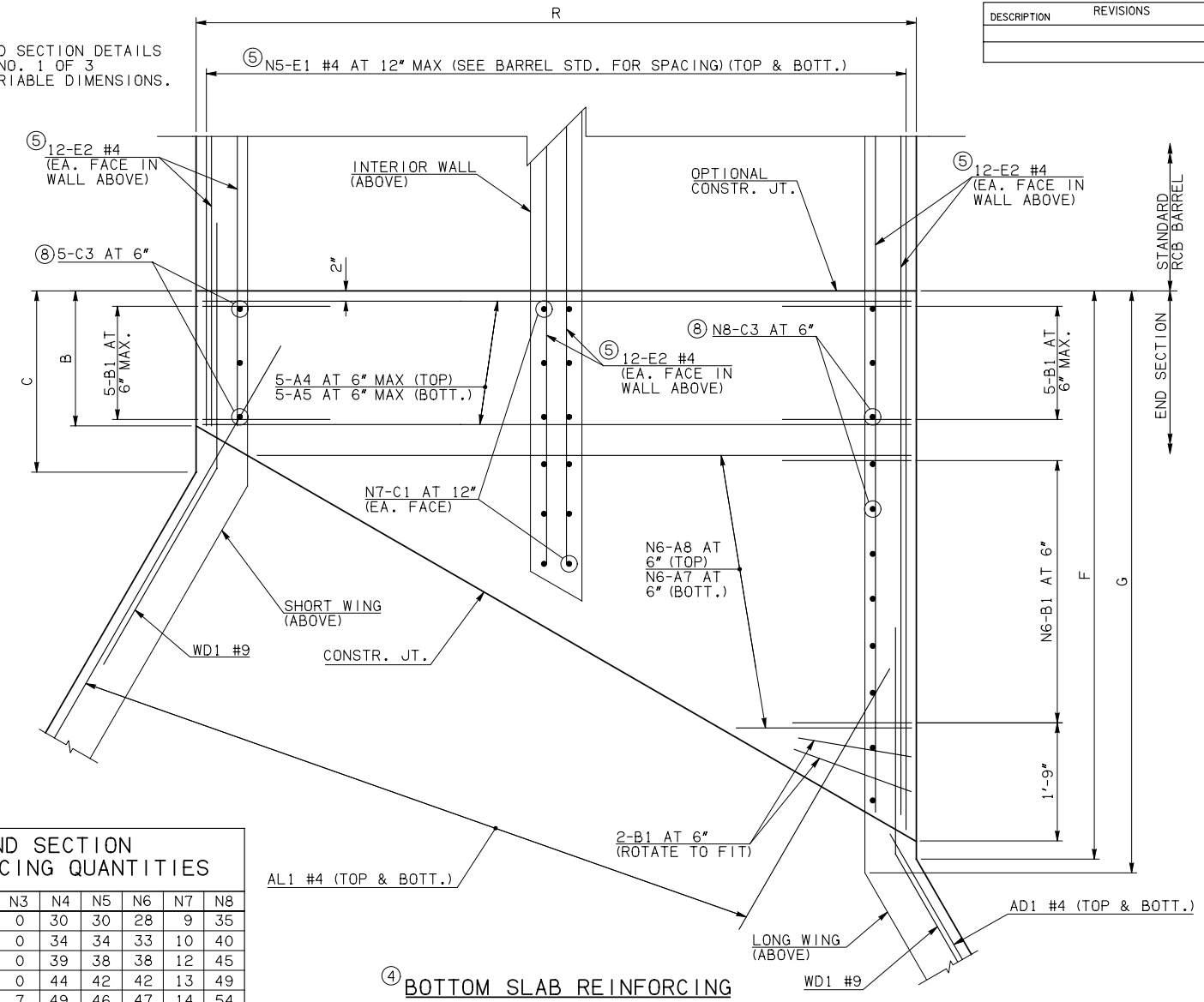


DESCRIPTION	REVISIONS	DATE



NOTE: SEE END SECTION DETAILS SHEET NO. 1 OF 3 FOR VARIABLE DIMENSIONS.



END SECTION REINFORCING QUANTITIES

SPAN	N1	N2	N3	N4	N5	N6	N7	N8
12'	24	17	0	30	30	28	9	35
14'	26	15	0	34	34	33	10	40
16'	29	12	0	39	38	38	12	45
18'	32	9	0	44	42	42	13	49
20'	1	33	7	49	46	47	14	54

END CONNECTION BAR LIST

ONE END CONNECTION SHOWN

MARK	FORM	12' SPAN		14' SPAN		16' SPAN		18' SPAN		20' SPAN			
		SIZE	QTY.	LENGTH	REMARKS	SIZE	QTY.	LENGTH	REMARKS	SIZE	QTY.	LENGTH	REMARKS
A4	STR	#6	10	26'-8"		#7	10	30'-8"		#8	10	39'-0"	
A5	STR	#9	10	26'-8"		#9	10	30'-8"		#10	10	39'-0"	
A6	STR	#7	28	13'-0 1/2" AVG.	1'-4" TO 24'-9"	#7	33	15'-2 1/2" AVG.	1'-4" TO 29'-1"	#8	38	17'-4 1/2" AVG.	1'-4" TO 33'-5"
A7	STR	#9	56	14'-2" AVG.	2'-6" TO 25'-10"	#9	66	16'-4" AVG.	2'-6" TO 30'-2"	#9	76	18'-6" AVG.	2'-6" TO 34'-6"
A8	STR	#7	28	14'-2" AVG.	2'-6" TO 25'-10"	#7	33	16'-4" AVG.	2'-6" TO 30'-2"	#8	38	18'-6" AVG.	2'-6" TO 34'-6"
B1	BNT	#6	40	5'-4"		#6	45	5'-5"		#6	50	5'-8"	
B2	BNT	#6	40	15'-4"		#6	45	15'-5"		#6	50	15'-8"	
C1	STR	#4	18	2'-3"		#4	20	2'-5"		#4	26	2'-6"	
C2	STR	#4	18	12'-11"		#4	20	13'-1"		#4	26	13'-2"	
C3	STR	#4	40	2'-3"		#4	45	2'-5"		#5	50	2'-9"	
C4	STR	#4	40	12'-11"		#4	45	13'-1"		#5	50	13'-2"	
E1	STR	#4	120	9'-9 1/2" AVG.	2'-1" TO 17'-6"	#4	136	10'-9" AVG.	1'-11" TO 19'-7"	#4	152	12'-9 1/2" AVG.	2'-9" TO 22'-10"
E2	STR	#4	72	9'-4" AVG.	2'-1", 8'-10", 17'-1"	#4	72	10'-4" AVG.	1'-11", 9'-10", 19'-3"	#4	72	12'-4" AVG.	2'-9", 11'-10", 22'-5"

- NOTES: ③ QUANTITY SHOWN REPRESENTS TWO SETS. ④ 4-SETS OF N5-E1 BARS REQUIRED. ⑤ FOR FURTHER INFORMATION REGARDING END SECTION A, B, C, AND E BARS REFER TO RCB CULVERT - BARREL DETAILS. ⑥ LENGTHS OF E1 & E2 BARS SHOWN ARE ADDITIONAL LENGTHS REQUIRED FOR THE END SECTION. LAP SPLICES, AS REQUIRED, SHALL BE IN ACCORDANCE WITH RCB BARREL STANDARD NOTES. ⑦ 3-SETS OF 24-E2 BARS REQUIRED WITH LENGTHS AS SHOWN CORRESPONDING TO SHORT EXTERIOR WALL, INTERIOR WALL, AND LONG EXTERIOR WALL. ⑧ C3 AND C4 BAR SIZE AND SPACING MAY DIFFER FROM BARREL SECTION.

QUANTITIES

ITEM	UNIT	12' SPAN	14' SPAN	16' SPAN	18' SPAN	20' SPAN
CLASS AA CONCRETE	CY	191.60	211.40	234.80	258.10	287.40
REINFORCING STEEL	LB	28400.00	31460.00	36320.00	43010.00	47890.00

NOTE: QUANTITIES ABOVE ARE FOR ONE END SECTION, WHICH IS COMPRISED OF ONE END CONNECTION, ONE HEADWALL, ONE APRON, AND TWO WINGWALLS.

APPROVED BY BRIDGE ENGINEER *Robert J. Muehl* DATE 4/09/09

OKLAHOMA DEPT. OF TRANSPORTATION
BRIDGE STANDARD (ENGLISH)
RCB CULVERTS - END SECTION DETAILS
DOUBLE CELL - 12'-0" HEIGHT - 30"
 SHEET NO. 2 OF 3

1999 SPECIFICATIONS RCB-E2-H12-30-2 OOE B-733E