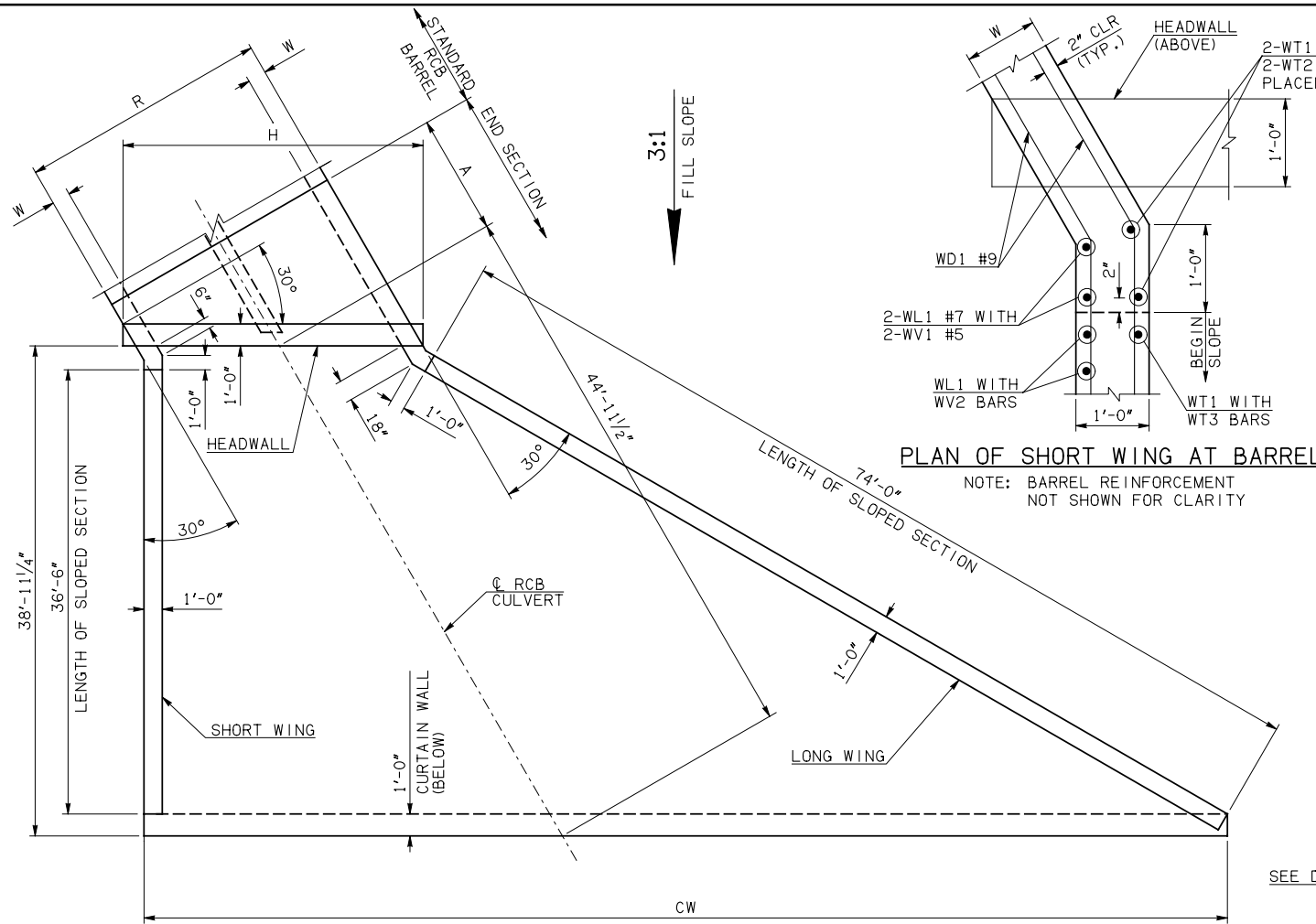
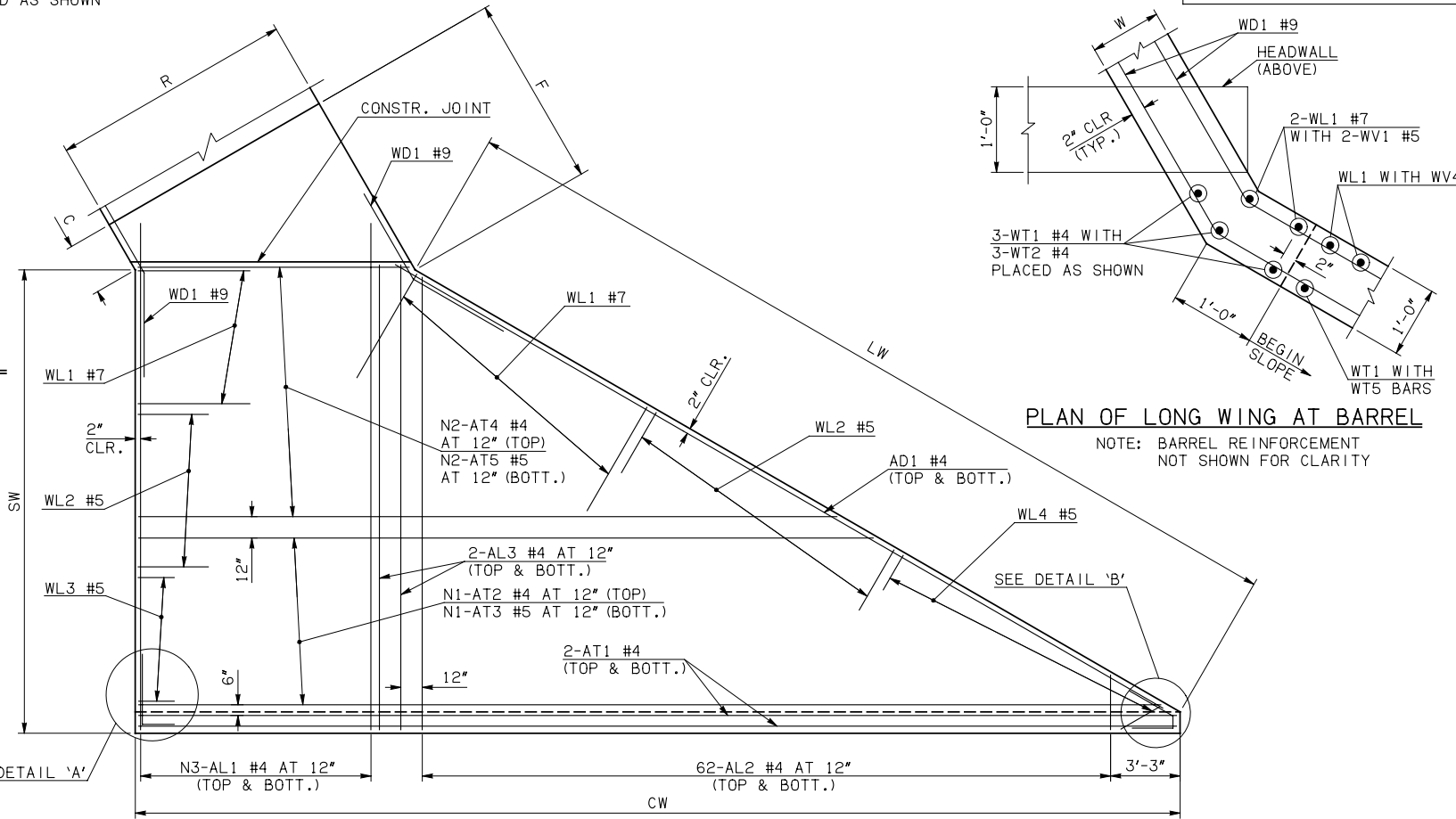


DESCRIPTION	REVISIONS	DATE



PLAN OF SHORT WING AT BARREL
NOTE: BARREL REINFORCEMENT NOT SHOWN FOR CLARITY

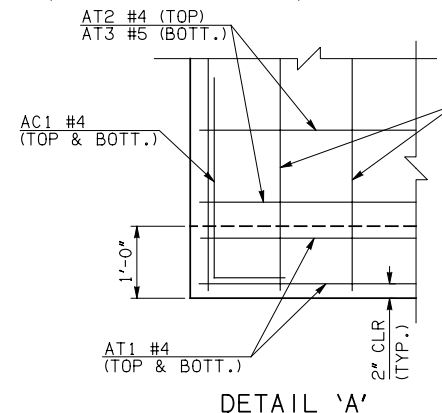


PLAN OF LONG WING AT BARREL
NOTE: BARREL REINFORCEMENT NOT SHOWN FOR CLARITY

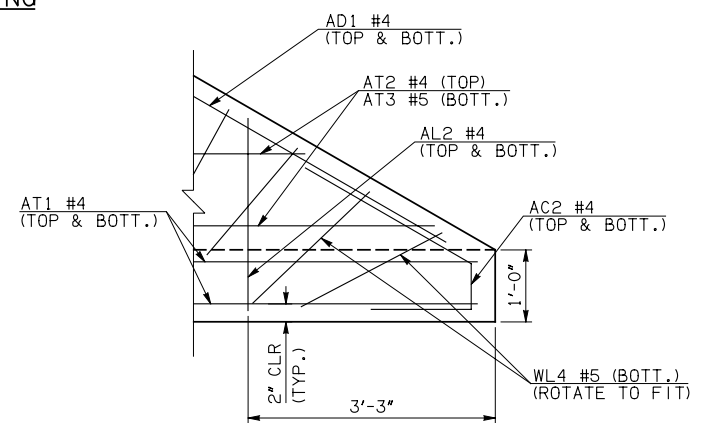
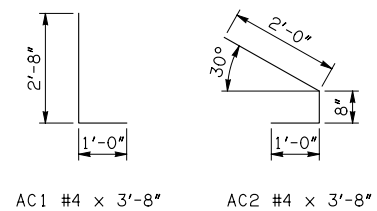
END SECTION PLAN

NOTE: SEE END SECTION DETAILS SHEET NO. 2 OF 3 FOR VARIABLE REINFORCING QUANTITIES.

END SECTION VARIABLE DIMENSIONS													
SPAN	W	A	B	C	CW	D	E	F	G	H	LW	R	SW
12'	12"	10'-0"	2'-2 1/2"	3'-0 1/4"	95'-9 3/4"	3'-3 1/2"	17'-9 1/2"	18'-5 1/2"	18'-8 1/2"	31'-9"	74'-8 3/4"	27'-0"	38'-2 3/4"
14'	12"	11'-0"	2'-0 1/2"	2'-10 1/4"	100'-5 1/4"	3'-1 1/2"	19'-11 1/2"	20'-7 1/4"	20'-10 1/2"	36'-4 1/2"	74'-8 3/4"	31'-0"	38'-2 3/4"
16'	13"	13'-0"	2'-10 1/4"	3'-10 1/4"	105'-0 3/4"	3'-11 3/4"	23'-1 3/4"	23'-10 3/4"	24'-0 1/4"	41'-2 1/4"	74'-6 3/4"	35'-2"	38'-0 3/4"
18'	14"	14'-0"	2'-7 3/4"	3'-10"	109'-8"	3'-9 3/4"	25'-4 1/4"	26'-2 1/2"	26'-2 1/4"	46'-0"	74'-4 3/4"	39'-4"	37'-10 3/4"
20'	15"	15'-0"	2'-5 1/4"	3'-10"	114'-3 1/2"	3'-8"	27'-6 3/4"	28'-6"	28'-4"	50'-9 3/4"	74'-2 3/4"	43'-6"	37'-8 3/4"



APRON REINFORCING



- ① INCLUDES 2'-6" LAP.
- ② QUANTITY SHOWN REPRESENTS TWO SETS.

APRON BAR LIST

ONE APRON SHOWN																	
MARK	SIZE	FORM	12' SPAN			14' SPAN			16' SPAN			18' SPAN			20' SPAN		
			QTY.	LENGTH	REMARKS	QTY.	LENGTH	REMARKS	QTY.	LENGTH	REMARKS	QTY.	LENGTH	REMARKS	QTY.	LENGTH	REMARKS
AC1	#4	BNT	2	3'-8"		2	3'-8"		2	3'-8"		2	3'-8"		2	3'-8"	
AC2	#4	BNT	2	3'-8"		2	3'-8"		2	3'-8"		2	3'-8"		2	3'-8"	
AD1	#4	STR	2	78'-0"		2	78'-0"		2	78'-0"		2	78'-0"		2	78'-0"	
AL1	#4	STR	60	40'-9"		68	40'-9"		78	40'-9"		88	40'-9"		98	40'-9"	
AL2	#4	STR	124	20'-1" AVG.	2'-6" TO 37'-8"	124	20'-1" AVG.	2'-6" TO 37'-8"	124	20'-1" AVG.	2'-6" TO 37'-8"	124	20'-1" AVG.	2'-6" TO 37'-8"	124	20'-1" AVG.	2'-6" TO 37'-8"
AL3	#4	STR	4	38'-9"		4	38'-9"		4	38'-9"		4	38'-9"		4	38'-9"	
AT1	#4	STR	4	97'-11"		4	102'-7"		4	107'-2"		4	111'-10"		4	116'-5"	
AT2	#4	STR	21	79'-10 1/2" AVG.	62'-7" TO 97'-2"	23	82'-9 1/2" AVG.	63'-9" TO 101'-10"	26	84'-9 1/2" AVG.	63'-2" TO 106'-5"	29	86'-10" AVG.	62'-7" TO 111'-1"	31	89'-8 1/2" AVG.	63'-9" TO 115'-8"
AT3	#5	STR	21	79'-10 1/2" AVG.	62'-7" TO 97'-2"	23	82'-9 1/2" AVG.	63'-9" TO 101'-10"	26	84'-9 1/2" AVG.	63'-2" TO 106'-5"	29	86'-10" AVG.	62'-7" TO 111'-1"	31	89'-8 1/2" AVG.	63'-9" TO 115'-8"
AT4	#4	STR	17	44'-5 1/2" AVG.	30'-7" TO 58'-4"	15	47'-4 1/2" AVG.	35'-3" TO 59'-6"	12	49'-4 1/2" AVG.	39'-10" TO 58'-11"	9	51'-5" AVG.	44'-6" TO 58'-4"	7	54'-3 1/2" AVG.	49'-1" TO 59'-6"
AT5	#5	STR	17	44'-5 1/2" AVG.	30'-7" TO 58'-4"	15	47'-4 1/2" AVG.	35'-3" TO 59'-6"	12	49'-4 1/2" AVG.	39'-10" TO 58'-11"	9	51'-5" AVG.	44'-6" TO 58'-4"	7	54'-3 1/2" AVG.	49'-1" TO 59'-6"
CH	#4	STR	4	31'-5"		4	36'-0"		4	40'-10"		4	45'-7"		4	50'-5"	
CL1	#4	BNT	32	4'-4"		36	4'-4"		41	4'-4"		46	4'-4"		51	4'-4"	
CL2	#4	BNT	32	4'-3"		36	4'-3"		41	4'-3"		46	4'-3"		51	4'-3"	
HD		STR	2	31'-5"		2	36'-0"		2	40'-10"		2	45'-7"		2	50'-5"	

APPROVED BY BRIDGE ENGINEER *Debra J. Nusch* DATE 4/09/09

OKLAHOMA DEPT. OF TRANSPORTATION
BRIDGE STANDARD (ENGLISH)
RCB CULVERTS - END SECTION DETAILS
DOUBLE CELL - 11'-0" HEIGHT - 30°
SHEET NO. 1 OF 3

1999 SPECIFICATIONS | RCB-E2-H11-30-1 | OOE | B-729E