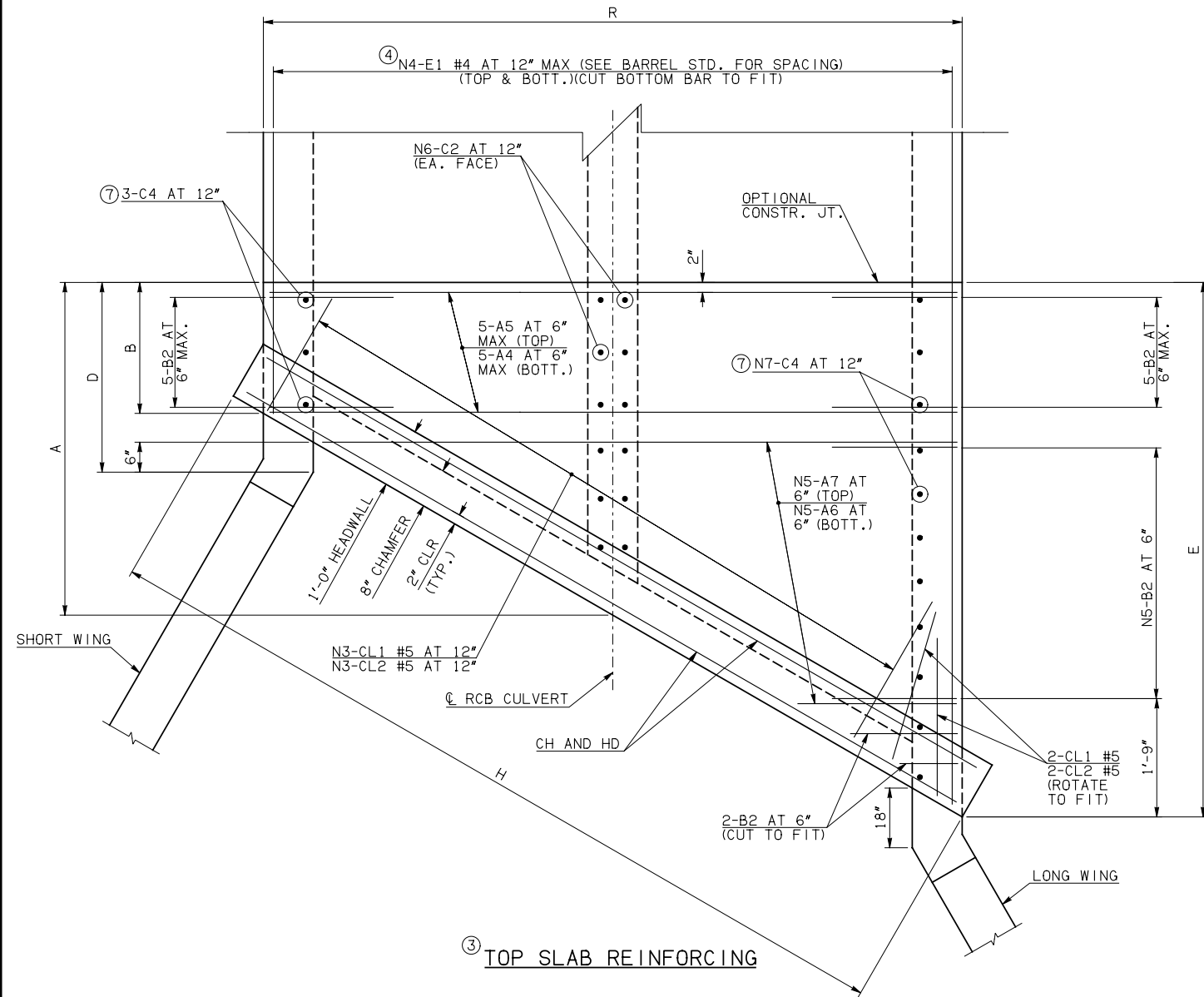
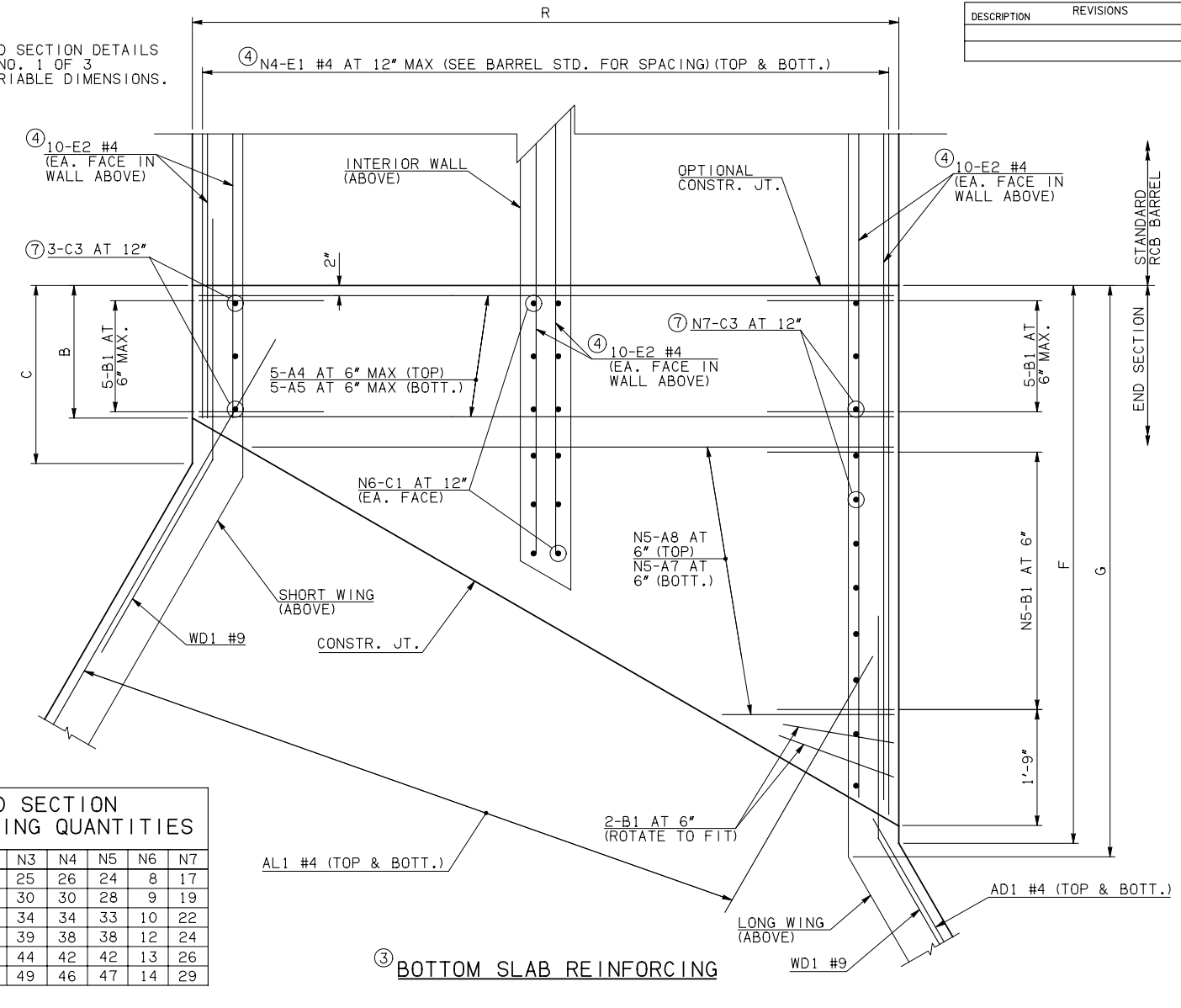


DESCRIPTION	REVISIONS	DATE



NOTE: SEE END SECTION DETAILS SHEET NO. 1 OF 3 FOR VARIABLE DIMENSIONS.



SPAN	N1	N2	N3	N4	N5	N6	N7
10'	15	20	25	26	24	8	17
12'	18	17	30	30	28	9	19
14'	20	15	34	34	33	10	22
16'	23	12	39	38	38	12	24
18'	26	9	44	42	42	13	26
20'	28	7	49	46	47	14	29

END CONNECTION BAR LIST

ONE END CONNECTION SHOWN

MARK	FORM	10' SPAN		12' SPAN		14' SPAN		16' SPAN		18' SPAN		20' SPAN	
		SIZE	QTY.	LENGTH	REMARKS	SIZE	QTY.	LENGTH	REMARKS	SIZE	QTY.	LENGTH	REMARKS
A4	STR	#5	10	22'-8"		#6	10	26'-8"		#7	10	34'-10"	
A5	STR	#8	10	22'-8"		#9	10	26'-8"		#9	10	34'-10"	
A6	STR	#7	24	11'-3 1/2" AVG.	1'-4" TO 21'-3"	#7	28	13'-0 1/2" AVG.	1'-4" TO 24'-9"	#7	33	15'-2 1/2" AVG.	1'-4" TO 29'-1"
A7	STR	#8	48	12'-5 1/2" AVG.	2'-6" TO 22'-5"	#9	56	14'-2" AVG.	2'-6" TO 25'-10"	#9	66	16'-4" AVG.	2'-6" TO 30'-2"
A8	STR	#7	24	12'-5 1/2" AVG.	2'-6" TO 22'-5"	#7	28	14'-2" AVG.	2'-6" TO 25'-10"	#7	33	16'-4" AVG.	2'-6" TO 30'-2"
B1	BNT	#5	36	5'-1"		#6	40	5'-0"		#6	45	5'-1"	
B2	BNT	#5	36	13'-5"		#6	40	13'-0"		#6	45	13'-1"	
C1	STR	#4	16	2'-2"		#4	18	2'-3"		#4	20	2'-4"	
C2	STR	#4	16	10'-10"		#4	18	10'-11"		#4	20	11'-0"	
C3	STR	#5	20	2'-6"		#5	22	2'-7"		#5	25	2'-8"	
C4	STR	#5	20	10'-10"		#5	22	10'-11"		#5	25	11'-0"	
E1	STR	#4	104	8'-9 1/2" AVG.	2'-3" TO 15'-4"	#4	120	9'-9 1/2" AVG.	2'-1" TO 17'-6"	#4	136	10'-9" AVG.	1'-11" TO 19'-7"
E2	STR	#4	60	8'-4" AVG.	2'-3", 7'-10", 14'-11"	#4	60	9'-4" AVG.	2'-1", 8'-10", 17'-1"	#4	60	10'-4" AVG.	1'-11", 9'-10", 19'-3"

- NOTES: ② QUANTITY SHOWN REPRESENTS TWO SETS.
 ③ FOR FURTHER INFORMATION REGARDING END SECTION A, B, C, AND E BARS REFER TO RCB CULVERT - BARREL DETAILS.
 ④ LENGTHS OF E1 & E2 BARS SHOWN ARE ADDITIONAL LENGTHS REQUIRED FOR THE END SECTION. LAP SPLICES, AS REQUIRED, SHALL BE IN ACCORDANCE WITH RCB BARREL STANDARD NOTES.

- ⑤ 4-SETS OF N4-E1 BARS REQUIRED.
 ⑥ 3-SETS OF 20-E2 BARS REQUIRED WITH LENGTHS AS SHOWN CORRESPONDING TO SHORT EXTERIOR WALL, INTERIOR WALL, AND LONG EXTERIOR WALL.
 ⑦ C3 AND C4 BAR SIZE AND SPACING MAY DIFFER FROM BARREL SECTION.

QUANTITIES

ITEM	UNIT	10' SPAN	12' SPAN	14' SPAN	16' SPAN	18' SPAN	20' SPAN
CLASS AA CONCRETE	CY	134.00	148.40	164.30	187.40	208.50	235.70
REINFORCING STEEL	LB	19160.00	22430.00	25350.00	29790.00	36180.00	40870.00

NOTE: QUANTITIES ABOVE ARE FOR ONE END SECTION, WHICH IS COMPRISED OF ONE END CONNECTION, ONE HEADWALL, ONE APRON, AND TWO WINGWALLS.

APPROVED BY BRIDGE ENGINEER *Robert J. Muech* DATE 4/09/09

OKLAHOMA DEPT. OF TRANSPORTATION
 BRIDGE STANDARD (ENGLISH)
 RCB CULVERTS - END SECTION DETAILS
 DOUBLE CELL - 10'-0" HEIGHT - 30"
 SHEET NO. 2 OF 3