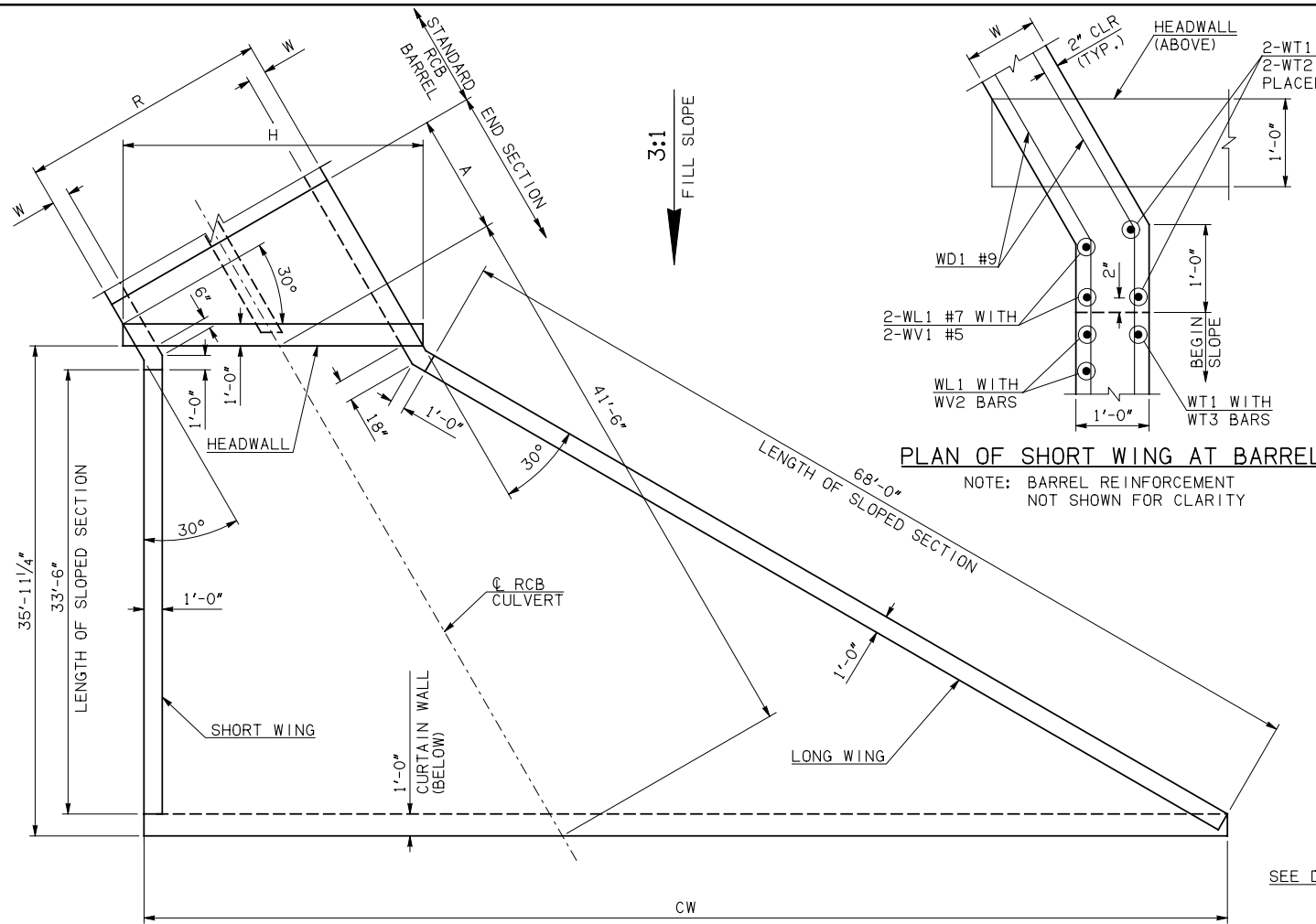
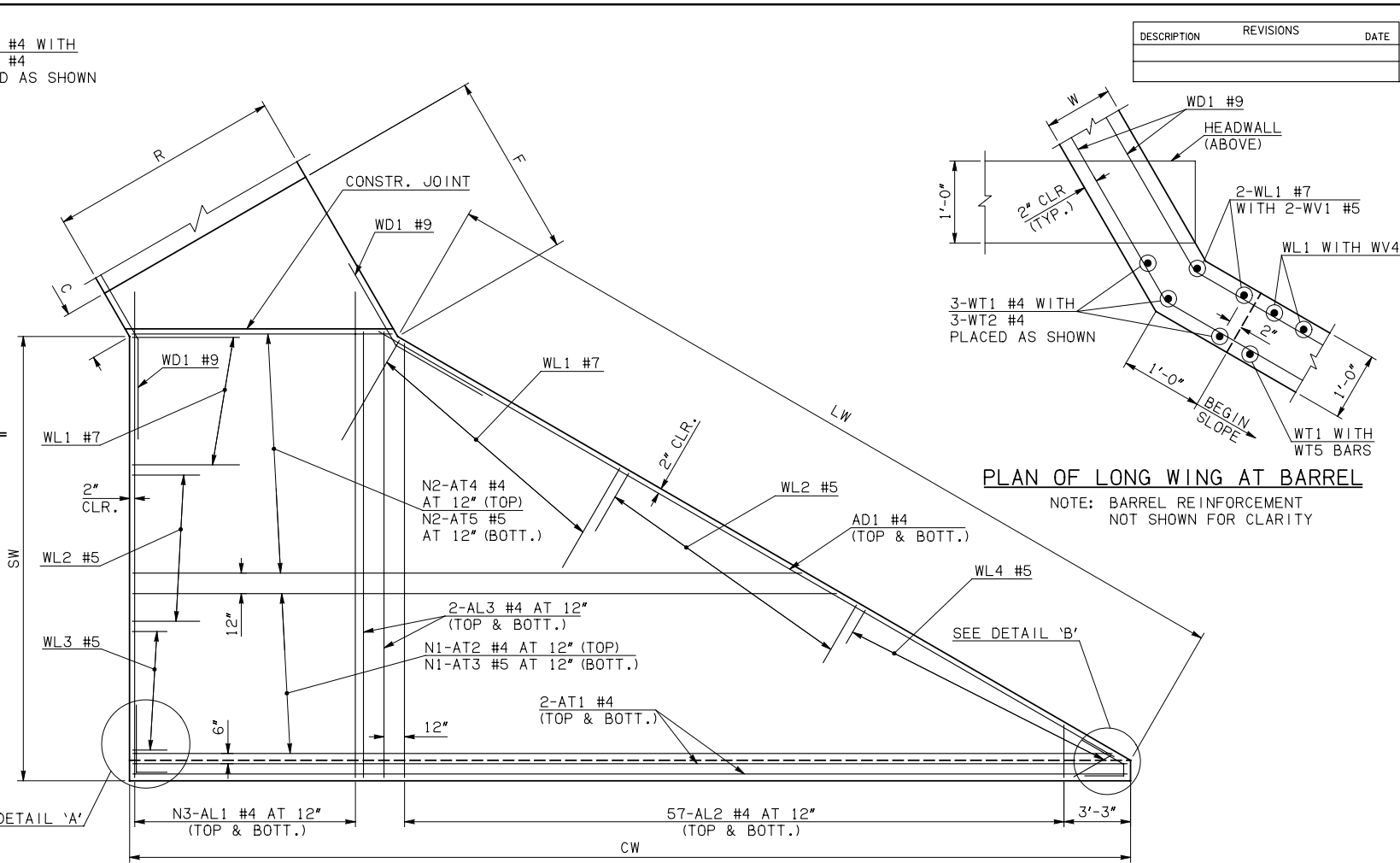


DESCRIPTION	REVISIONS	DATE



PLAN OF SHORT WING AT BARREL
NOTE: BARREL REINFORCEMENT NOT SHOWN FOR CLARITY

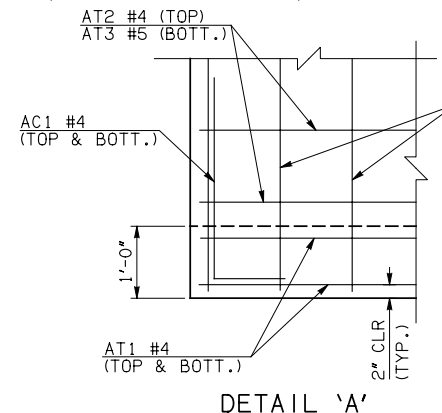


PLAN OF LONG WING AT BARREL
NOTE: BARREL REINFORCEMENT NOT SHOWN FOR CLARITY

END SECTION PLAN

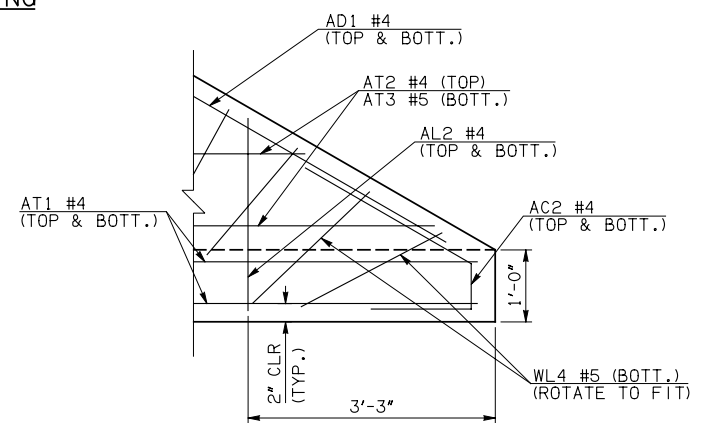
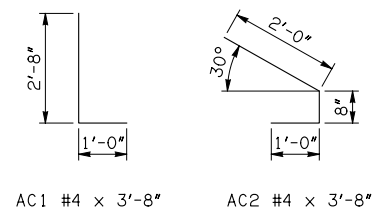
NOTE: SEE END SECTION DETAILS SHEET NO. 2 OF 3 FOR VARIABLE REINFORCING QUANTITIES.

END SECTION VARIABLE DIMENSIONS													
SPAN	W	A	B	C	CW	D	E	F	G	H	LW	R	SW
10'	12"	9'-0"	2'-4 1/4"	3'-2"	86'-0"	3'-5 1/4"	15'-7 3/4"	16'-3 1/2"	16'-6 3/4"	27'-1 3/4"	68'-8 3/4"	23'-0"	35'-2 3/4"
12'	12"	10'-0"	2'-2 1/2"	3'-0 1/4"	90'-7 1/2"	3'-3 1/2"	17'-9 1/2"	18'-5 1/2"	18'-8 1/2"	31'-9"	68'-8 3/4"	27'-0"	35'-2 3/4"
14'	12"	11'-0"	2'-0 1/2"	2'-10 1/4"	95'-3"	3'-1 1/2"	19'-11 1/2"	20'-7 1/4"	20'-10 1/2"	36'-4 1/2"	68'-8 3/4"	31'-0"	35'-2 3/4"
16'	13"	13'-0"	2'-10 1/4"	3'-10 1/4"	99'-10 1/4"	3'-11 3/4"	23'-1 3/4"	23'-10 3/4"	24'-0 1/4"	41'-2 1/4"	68'-6 3/4"	35'-2"	35'-0 3/4"
18'	14"	14'-0"	2'-7 3/4"	3'-10"	104'-5 3/4"	3'-9 3/4"	25'-4 1/4"	26'-2 1/2"	26'-2 1/4"	46'-0"	68'-4 3/4"	39'-4"	34'-10 3/4"
20'	15"	15'-0"	2'-5 1/4"	3'-10"	109'-1 1/4"	3'-8"	27'-6 3/4"	28'-6"	28'-4"	50'-9 3/4"	68'-2 3/4"	43'-6"	34'-8 3/4"



DETAIL 'A'

APRON REINFORCING



DETAIL 'B'

APRON BAR LIST

MARK	SIZE	FORM	ONE APRON SHOWN																							
			10' SPAN				12' SPAN				14' SPAN				16' SPAN				18' SPAN				20' SPAN			
			QTY.	LENGTH	REMARKS	QTY.	LENGTH	REMARKS	QTY.	LENGTH	REMARKS	QTY.	LENGTH	REMARKS	QTY.	LENGTH	REMARKS	QTY.	LENGTH	REMARKS	QTY.	LENGTH	REMARKS			
AC1	#4	BNT	2	3'-8"		2	3'-8"		2	3'-8"		2	3'-8"		2	3'-8"		2	3'-8"		2	3'-8"				
AC2	#4	BNT	2	3'-8"		2	3'-8"		2	3'-8"		2	3'-8"		2	3'-8"		2	3'-8"		2	3'-8"				
AD1	#4	STR	2	72'-0"		2	72'-0"		2	72'-0"		2	72'-0"		2	72'-0"		2	72'-0"		2	72'-0"				
AL1	#4	STR	50	37'-9"		60	37'-9"		68	37'-9"		78	37'-9"		88	37'-9"		98	37'-9"		108	37'-9"				
AL2	#4	STR	114	18'-8" AVG.	2'-6" TO 34'-10"	114	18'-8" AVG.	2'-6" TO 34'-10"	114	18'-8" AVG.	2'-6" TO 34'-10"	114	18'-8" AVG.	2'-6" TO 34'-10"	114	18'-8" AVG.	2'-6" TO 34'-10"	114	18'-8" AVG.	2'-6" TO 34'-10"	114	18'-8" AVG.	2'-6" TO 34'-10"			
AL3	#4	STR	4	35'-9"		4	35'-9"		4	35'-9"		4	35'-9"		4	35'-9"		4	35'-9"		4	35'-9"				
AT1	#4	STR	4	88'-2"		4	92'-9"		4	97'-4"		4	102'-0"		4	106'-7"		4	111'-3"		4	115'-0"				
AT2	#4	STR	15	75'-3 1/2" AVG.	63'-2" TO 87'-5"	18	77'-3 1/2" AVG.	62'-7" TO 92'-0"	20	80'-2" AVG.	63'-9" TO 96'-7"	23	82'-2 1/2" AVG.	63'-2" TO 101'-3"	26	84'-2 1/2" AVG.	62'-7" TO 105'-10"	28	87'-1 1/2" AVG.	63'-9" TO 110'-6"	31	89'-1 1/2" AVG.	63'-9" TO 115'-2"			
AT3	#5	STR	15	75'-3 1/2" AVG.	63'-2" TO 87'-5"	18	77'-3 1/2" AVG.	62'-7" TO 92'-0"	20	80'-2" AVG.	63'-9" TO 96'-7"	23	82'-2 1/2" AVG.	63'-2" TO 101'-3"	26	84'-2 1/2" AVG.	62'-7" TO 105'-10"	28	87'-1 1/2" AVG.	63'-9" TO 110'-6"	31	89'-1 1/2" AVG.	63'-9" TO 115'-2"			
AT4	#4	STR	20	42'-5 1/2" AVG.	26'-0" TO 58'-11"	17	44'-5 1/2" AVG.	30'-7" TO 58'-4"	15	47'-4 1/2" AVG.	35'-3" TO 59'-6"	12	49'-4 1/2" AVG.	39'-10" TO 58'-11"	9	51'-5" AVG.	44'-6" TO 58'-4"	7	54'-3 1/2" AVG.	49'-1" TO 59'-6"	5	57'-2" AVG.	53'-8" TO 58'-4"			
AT5	#5	STR	20	42'-5 1/2" AVG.	26'-0" TO 58'-11"	17	44'-5 1/2" AVG.	30'-7" TO 58'-4"	15	47'-4 1/2" AVG.	35'-3" TO 59'-6"	12	49'-4 1/2" AVG.	39'-10" TO 58'-11"	9	51'-5" AVG.	44'-6" TO 58'-4"	7	54'-3 1/2" AVG.	49'-1" TO 59'-6"	5	57'-2" AVG.	53'-8" TO 58'-4"			

- ① INCLUDES 2'-6" LAP.
- ② QUANTITY SHOWN REPRESENTS TWO SETS.

APPROVED BY BRIDGE ENGINEER *Robert J. Rusch* DATE 4/09/09

OKLAHOMA DEPT. OF TRANSPORTATION
BRIDGE STANDARD (ENGLISH)
RCB CULVERTS - END SECTION DETAILS
DOUBLE CELL - 10'-0" HEIGHT - 30°
SHEET NO. 1 OF 3

1999 SPECIFICATIONS RCB-E2-H10-30-1 OOE B-726E