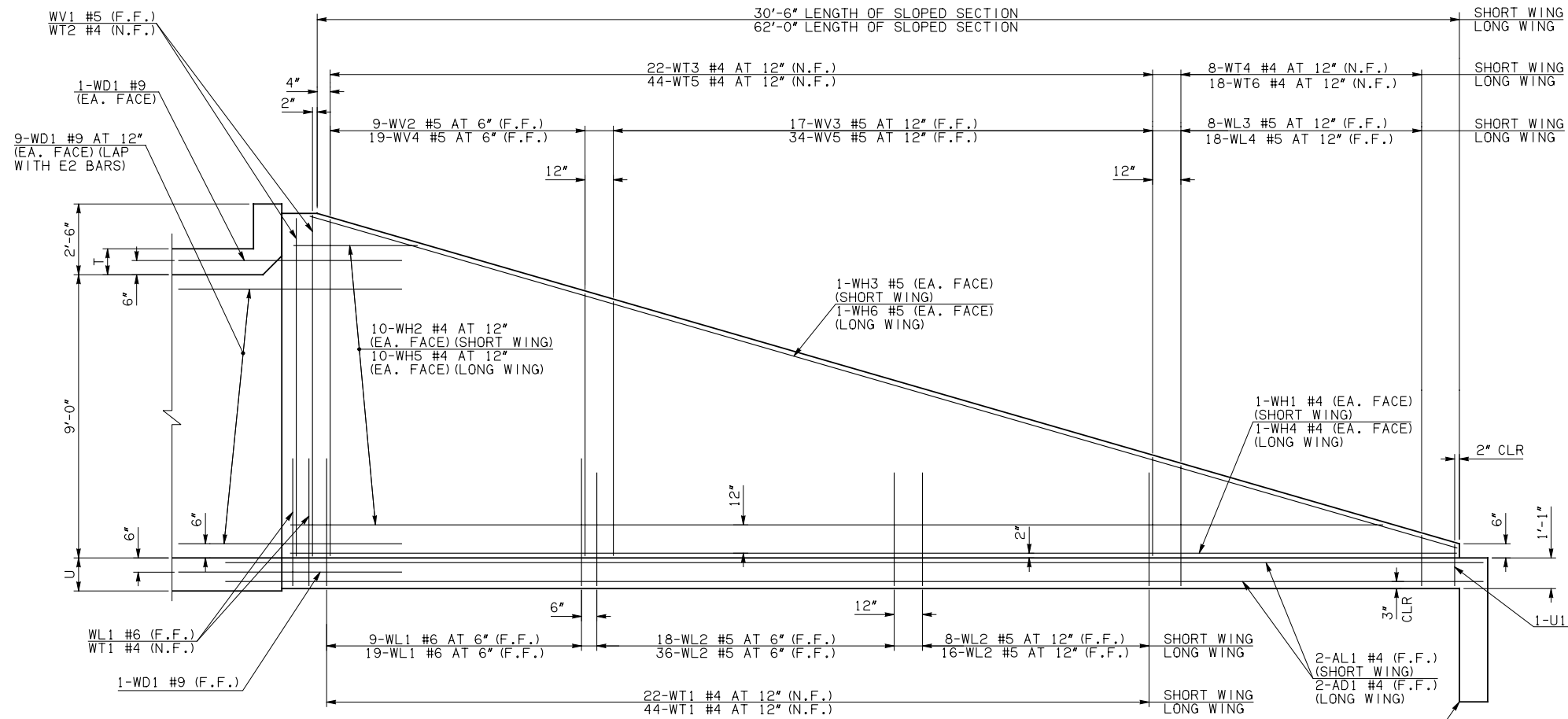
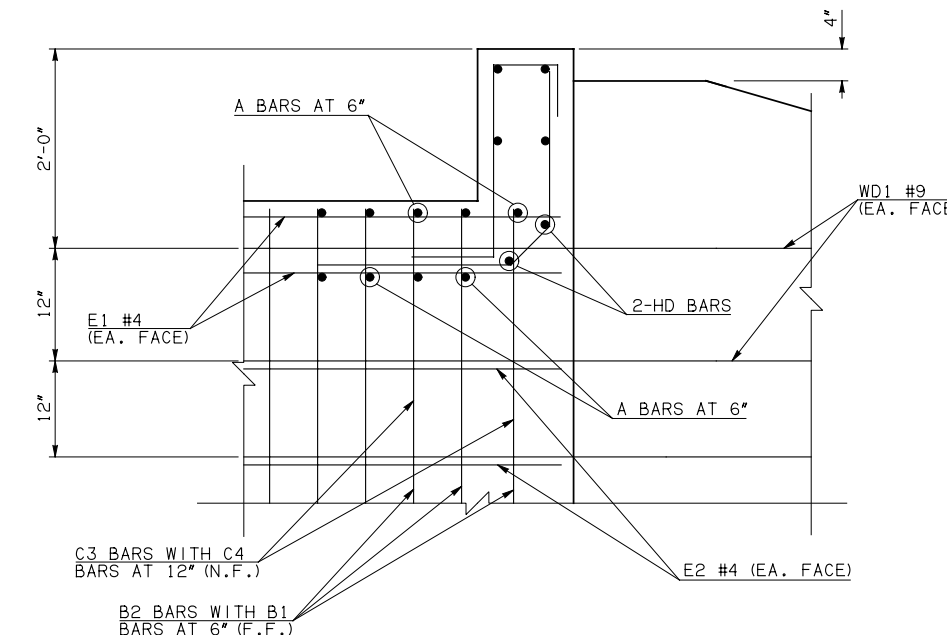


| DESCRIPTION | REVISIONS | DATE |
|-------------|-----------|------|
| | | |

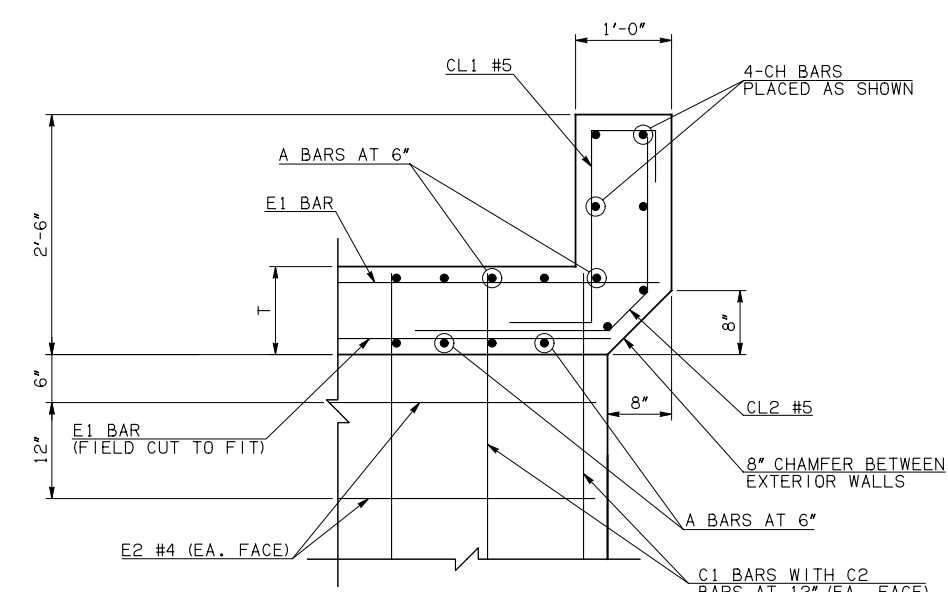


NOTE: F.F. = FAR FACE
N.F. = NEAR FACE

WING ELEVATION

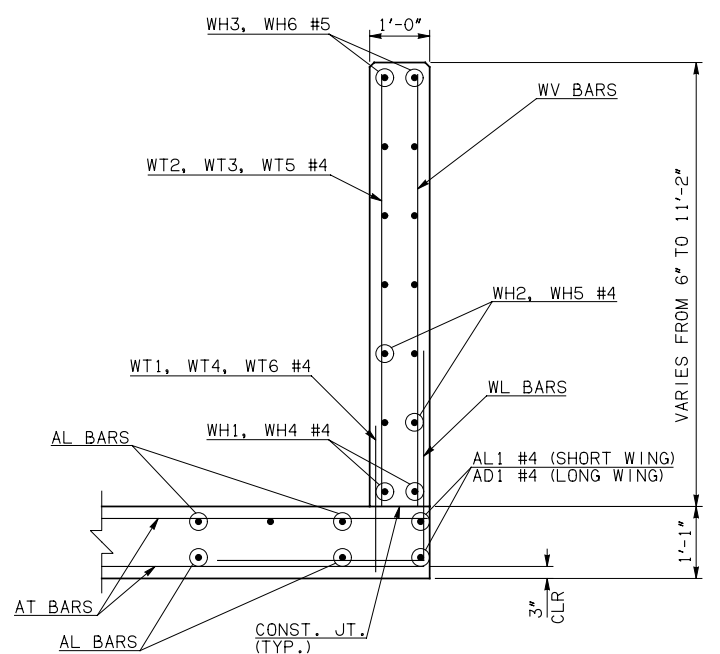


HEADWALL DETAIL AT EXTERIOR WALL

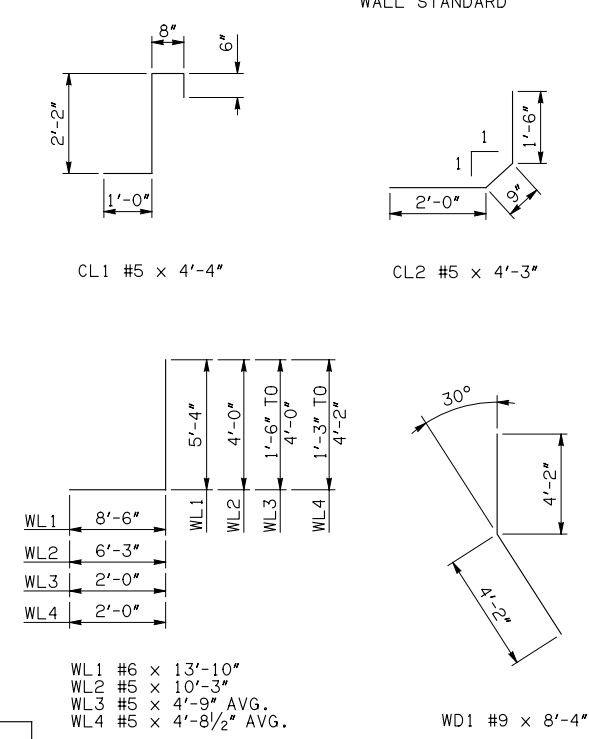


HEADWALL DETAIL AT INTERIOR WALL

- NOTES:
- INCLUDES 2'-6" LAP.
 - QUANTITY SHOWN REPRESENTS TWO SETS.
 - FOR FURTHER INFORMATION REGARDING END SECTION BARS A, B, C, E1, AND E2, REFER TO RCB CULVERT - BARREL DETAILS.



TYPICAL SECTION THRU WING



- WL1 #6 x 13'-10"
- WL2 #5 x 10'-3"
- WL3 #5 x 4'-9" AVG.
- WL4 #5 x 4'-8 1/2" AVG.
- WD1 #9 x 8'-4"
- U1 #4 x 3'-0"

| WINGWALL BAR LIST (LONG AND SHORT WING INCLUDED) | | | | | |
|---|------|------|------|-----------------|------------------|
| MARK | SIZE | QTY. | FORM | LENGTH | REMARKS |
| WD1 | #9 | 42 | BNT | 8'-4" | |
| WH1 | #4 | 2 | STR | 31'-4" | |
| WH2 | #4 | 20 | STR | 16'-2 1/2" AVG. | 3'-4" TO 29'-1" |
| WH3 | #5 | 2 | STR | 32'-1" | |
| WH4 | #4 | 2 | STR | 65'-4" | |
| WH5 | #4 | 20 | STR | 31'-11" AVG. | 5'-9" TO 58'-1" |
| WH6 | #5 | 2 | STR | 65'-2" | |
| WL1 | #6 | 32 | BNT | 13'-10" | |
| WL2 | #5 | 78 | BNT | 10'-3" | |
| WL3 | #5 | 8 | BNT | 4'-9" AVG. | 3'-6" TO 6'-0" |
| WL4 | #5 | 18 | BNT | 4'-8 1/2" AVG. | 3'-3" TO 6'-2" |
| WT1 | #4 | 71 | STR | 2'-10" | |
| WT2 | #4 | 5 | STR | 11'-0" | |
| WT3 | #4 | 22 | STR | 7'-2" AVG. | 3'-6" TO 10'-10" |
| WT4 | #4 | 8 | STR | 2'-9" AVG. | 1'-6" TO 4'-0" |
| WT5 | #4 | 44 | STR | 7'-2 1/2" AVG. | 3'-6" TO 10'-11" |
| WT6 | #4 | 18 | STR | 2'-8 1/2" AVG. | 1'-3" TO 4'-2" |
| WV1 | #5 | 4 | STR | 11'-0" | |
| WV2 | #5 | 9 | STR | 10'-1 1/2" AVG. | 9'-5" TO 10'-10" |
| WV3 | #5 | 17 | STR | 6'-3 1/2" AVG. | 3'-6" TO 9'-1" |
| WV4 | #5 | 19 | STR | 10'-1 1/2" AVG. | 9'-4" TO 10'-11" |
| WV5 | #5 | 34 | STR | 6'-4" AVG. | 3'-6" TO 9'-2" |
| U1 | #4 | 2 | BNT | 3'-0" | |

HEADWALL BAR LIST

| ONE HEADWALL SHOWN | | | | | | | | | | | | | | | | |
|--------------------|------|----------|------|--------|----------|------|--------|----------|------|--------|----------|------|---------|----------|------|--------|
| MARK | FORM | 10' SPAN | | | 12' SPAN | | | 14' SPAN | | | 16' SPAN | | | 18' SPAN | | |
| | | SIZE | QTY. | LENGTH | SIZE | QTY. | LENGTH | SIZE | QTY. | LENGTH | SIZE | QTY. | LENGTH | SIZE | QTY. | LENGTH |
| CH | STR | #6 | 4 | 26'-9" | #6 | 4 | 31'-5" | #6 | 4 | 36'-0" | #8 | 4 | 40'-10" | #8 | 4 | 45'-7" |
| CL1 | BNT | #5 | 27 | 4'-4" | #5 | 32 | 4'-4" | #5 | 36 | 4'-4" | #5 | 41 | 4'-4" | #5 | 46 | 4'-4" |
| CL2 | BNT | #5 | 27 | 4'-3" | #5 | 32 | 4'-3" | #5 | 36 | 4'-3" | #5 | 41 | 4'-3" | #5 | 46 | 4'-3" |
| HD | STR | #8 | 2 | 26'-9" | #8 | 2 | 31'-5" | #8 | 2 | 36'-0" | #9 | 2 | 40'-10" | #9 | 2 | 45'-7" |

APPROVED BY BRIDGE ENGINEER *Robert J. Nisch* DATE 4/09/09

OKLAHOMA DEPT. OF TRANSPORTATION
BRIDGE STANDARD (ENGLISH)
RCB CULVERTS - END SECTION DETAILS
DOUBLE CELL - 9'-0" HEIGHT - 30°
SHEET NO. 3 OF 3

1999 SPECIFICATIONS RCB-E2-H9-30-3 OOE B-725E