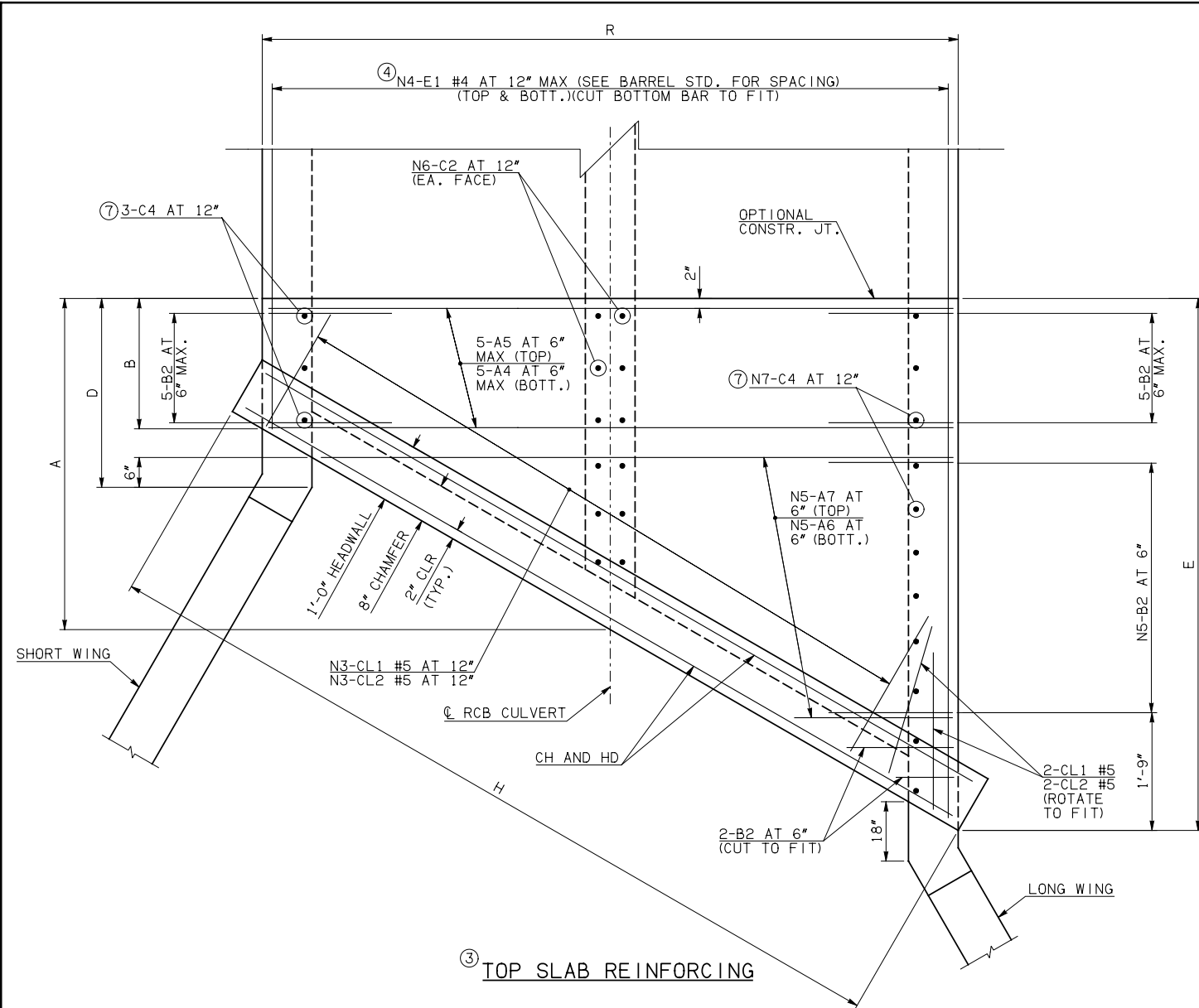


DESCRIPTION	REVISIONS	DATE



NOTE: SEE END SECTION DETAILS SHEET NO. 1 OF 3 FOR VARIABLE DIMENSIONS.

STANDARD RCB BARREL
END SECTION

E

1'-9"

18"

2'-B2 AT 6" (CUT TO FIT)

2-CL1 #5
2-CL2 #5 (ROTATE TO FIT)

N5-A7 AT 6" (TOP)
N5-A6 AT 6" (BOTT.)

7 N7-C4 AT 12"

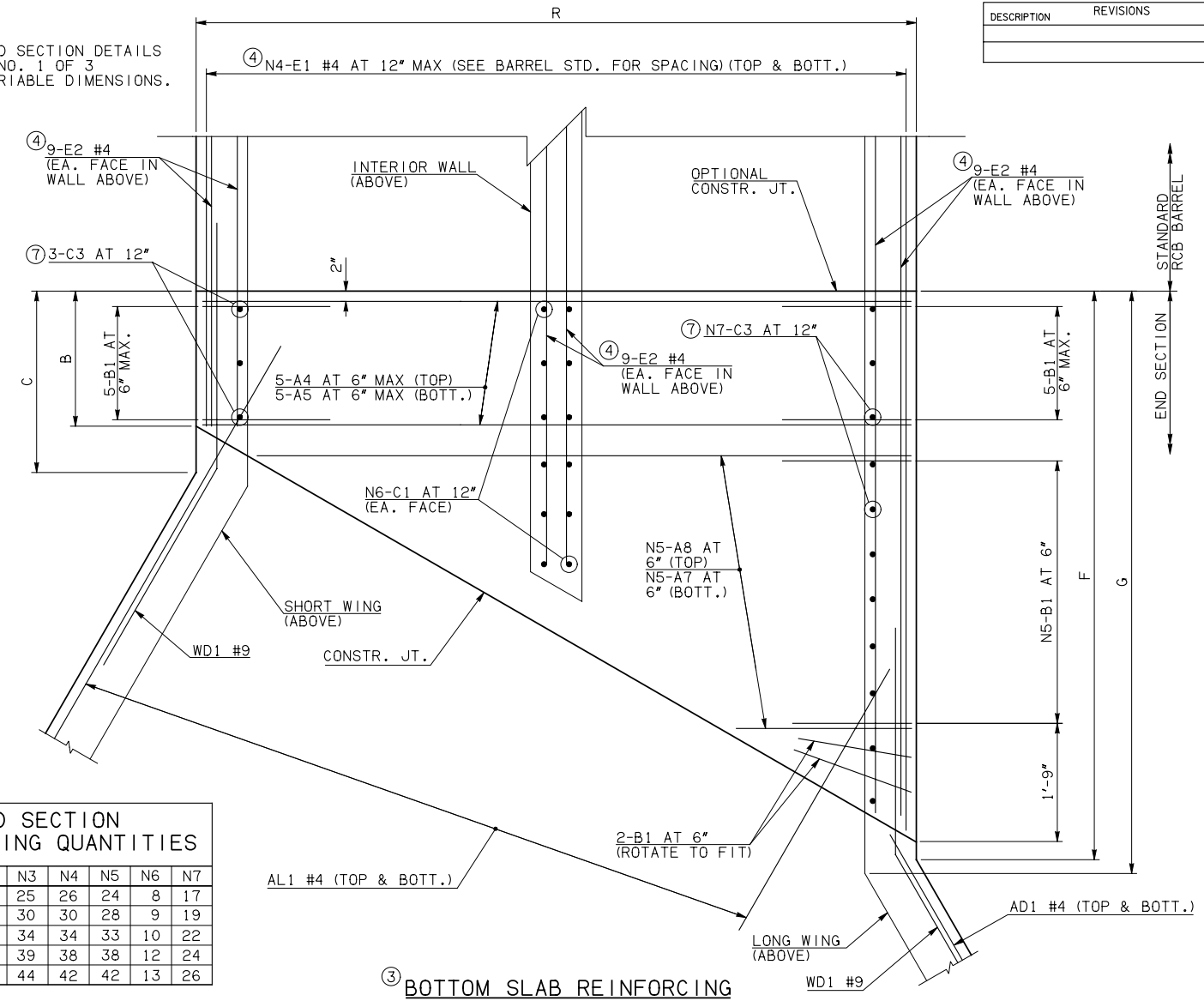
5-B2 AT 6" MAX.

2"

OPTIONAL CONSTR. JT.

N6-C2 AT 12" (EA. FACE)

3-C4 AT 12"



SPAN	N1	N2	N3	N4	N5	N6	N7
10'	12	20	25	26	24	8	17
12'	15	17	30	30	28	9	19
14'	17	15	34	34	33	10	22
16'	20	12	39	38	38	12	24
18'	23	9	44	42	42	13	26

STANDARD RCB BARREL
END SECTION

F

1'-9"

2-B1 AT 6" (ROTATE TO FIT)

WD1 #9

AD1 #4 (TOP & BOTT.)

LONG WING (ABOVE)

CONSTR. JT.

SHORT WING (ABOVE)

N6-C1 AT 12" (EA. FACE)

5-A4 AT 6" MAX (TOP)
5-A5 AT 6" MAX (BOTT.)

9-E2 #4 (EA. FACE IN WALL ABOVE)

7 N7-C3 AT 12"

5-B1 AT 6" MAX.

2"

OPTIONAL CONSTR. JT.

INTERIOR WALL (ABOVE)

9-E2 #4 (EA. FACE IN WALL ABOVE)

END CONNECTION BAR LIST

ONE END CONNECTION SHOWN

MARK	FORM	10' SPAN		12' SPAN		14' SPAN		16' SPAN		18' SPAN											
		SIZE	QTY.	LENGTH	REMARKS	SIZE	QTY.	LENGTH	REMARKS	SIZE	QTY.	LENGTH	REMARKS								
A4	STR	#5	10	22'-8"		#6	10	26'-8"		#7	10	34'-10"		#8	10	39'-0"					
A5	STR	#8	10	22'-8"		#9	10	26'-8"		#9	10	30'-8"		#9	10	34'-10"		#10	10	39'-0"	
A6	STR	#7	24	11'-3 1/2" AVG.	1'-4" TO 21'-3"	#7	28	13'-0 1/2" AVG.	1'-4" TO 24'-9"	#7	33	15'-2 1/2" AVG.	1'-4" TO 29'-1"	#8	38	17'-4 1/2" AVG.	1'-4" TO 33'-5"	#8	42	19'-1" AVG.	1'-4" TO 36'-10"
A7	STR	#8	48	12'-5 1/2" AVG.	2'-6" TO 22'-5"	#9	56	14'-2" AVG.	2'-6" TO 25'-10"	#9	66	16'-4" AVG.	2'-6" TO 30'-2"	#9	76	18'-6" AVG.	2'-6" TO 34'-6"	#10	84	20'-3" AVG.	2'-6" TO 38'-0"
A8	STR	#7	24	12'-5 1/2" AVG.	2'-6" TO 22'-5"	#7	28	14'-2" AVG.	2'-6" TO 25'-10"	#7	33	16'-4" AVG.	2'-6" TO 30'-2"	#8	38	18'-6" AVG.	2'-6" TO 34'-6"	#8	42	20'-3" AVG.	2'-6" TO 38'-0"
B1	BNT	#5	36	4'-10"		#5	40	4'-6"		#5	45	4'-8"		#6	50	5'-6"		#6	54	6'-0"	
B2	BNT	#5	36	12'-2"		#5	40	11'-10"		#5	45	12'-0"		#6	50	12'-6"		#6	54	13'-0"	
C1	STR	#4	16	2'-2"		#4	18	2'-3"		#4	20	2'-4"		#4	24	2'-5"		#4	26	2'-6"	
C2	STR	#4	16	9'-10"		#4	18	9'-11"		#4	20	10'-0"		#4	24	10'-1"		#4	26	10'-2"	
C3	STR	#5	20	2'-6"		#4	22	2'-3"		#4	25	2'-4"		#4	27	2'-5"		#4	29	2'-6"	
C4	STR	#5	20	9'-10"		#4	22	9'-11"		#4	25	10'-0"		#4	27	10'-1"		#4	29	10'-2"	
E1	STR	#4	104	8'-9 1/2" AVG.	2'-3" TO 15'-4"	#4	120	9'-9 1/2" AVG.	2'-1" TO 17'-6"	#4	136	10'-9" AVG.	1'-11" TO 19'-7"	#4	152	12'-9 1/2" AVG.	2'-9" TO 22'-10"	#4	168	13'-9" AVG.	2'-6" TO 25'-0"
E2	STR	#4	54	8'-4" AVG.	2'-3", 7'-10", 14'-11"	#4	54	9'-4" AVG.	2'-1", 8'-10", 17'-1"	#4	54	10'-4" AVG.	1'-11", 9'-10", 19'-3"	#4	54	12'-4" AVG.	2'-9", 11'-10", 22'-5"	#4	54	13'-3 1/2" AVG.	2'-6", 12'-10", 24'-7"

QUANTITIES

ITEM	UNIT	10' SPAN	12' SPAN	14' SPAN	16' SPAN	18' SPAN
CLASS AA CONCRETE	CY	118.80	132.60	147.80	170.00	190.40
REINFORCING STEEL	LB	16810.00	19570.00	22390.00	27120.00	32400.00

NOTE: QUANTITIES ABOVE ARE FOR ONE END SECTION, WHICH IS COMPRISED OF ONE END CONNECTION, ONE HEADWALL, ONE APRON, AND TWO WINGWALLS.

NOTES: 2 QUANTITY SHOWN REPRESENTS TWO SETS.

3 FOR FURTHER INFORMATION REGARDING END SECTION A, B, C, AND E BARS REFER TO RCB CULVERT - BARREL DETAILS.

4 LENGTHS OF E1 & E2 BARS SHOWN ARE ADDITIONAL LENGTHS REQUIRED FOR THE END SECTION. LAP SPLICES, AS REQUIRED, SHALL BE IN ACCORDANCE WITH RCB BARREL STANDARD NOTES.

5 4-SETS OF N4-E1 BARS REQUIRED.

6 3-SETS OF 18-E2 BARS REQUIRED WITH LENGTHS AS SHOWN CORRESPONDING TO SHORT EXTERIOR WALL, INTERIOR WALL, AND LONG EXTERIOR WALL.

7 C3 AND C4 BAR SIZE AND SPACING MAY DIFFER FROM BARREL SECTION.

APPROVED BY BRIDGE ENGINEER *Robert J. Muech* DATE 4/09/09

OKLAHOMA DEPT. OF TRANSPORTATION
BRIDGE STANDARD ENGLISH
RCB CULVERTS - END SECTION DETAILS
DOUBLE CELL - 9'-0" HEIGHT - 30°
SHEET NO. 2 OF 3