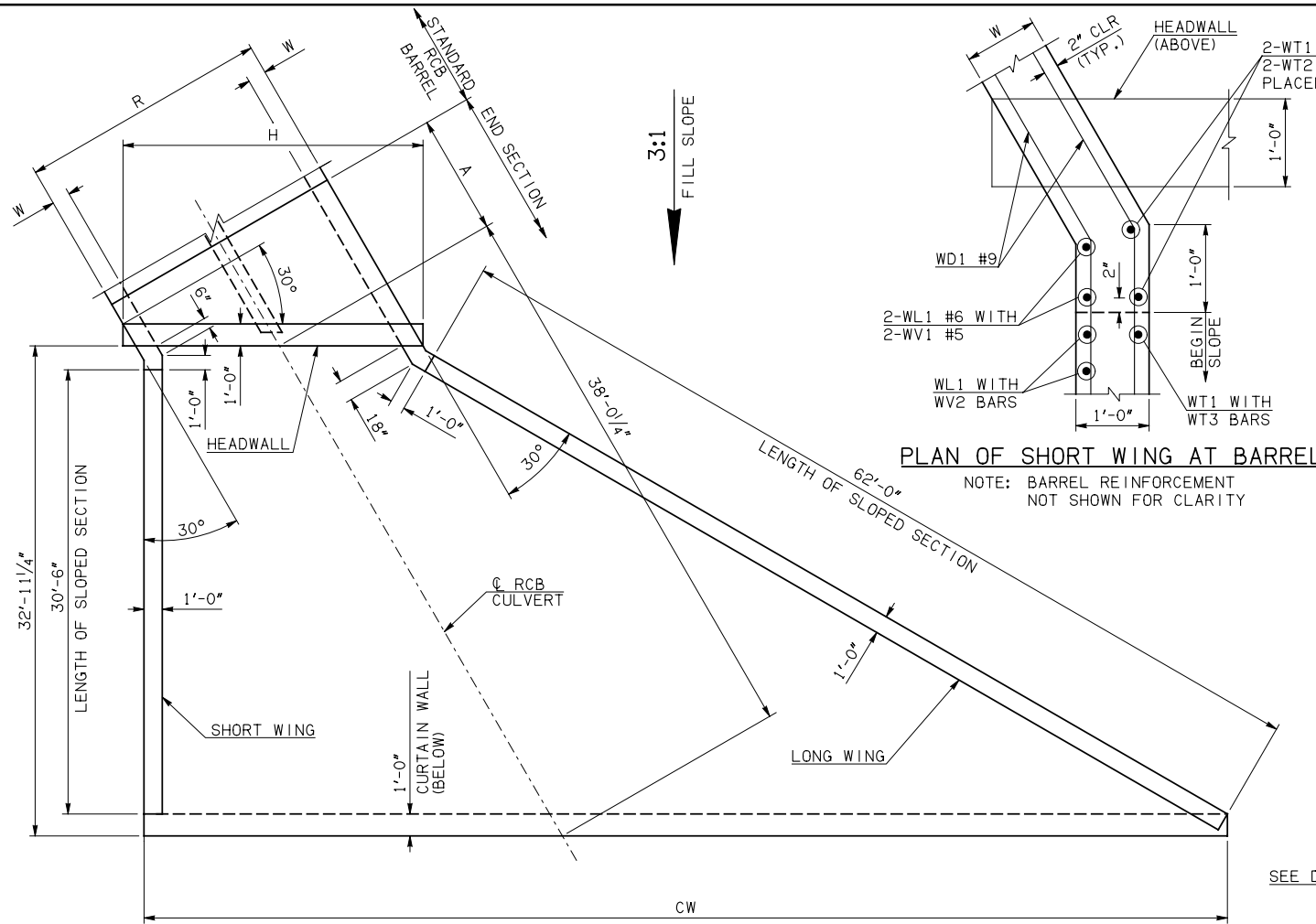
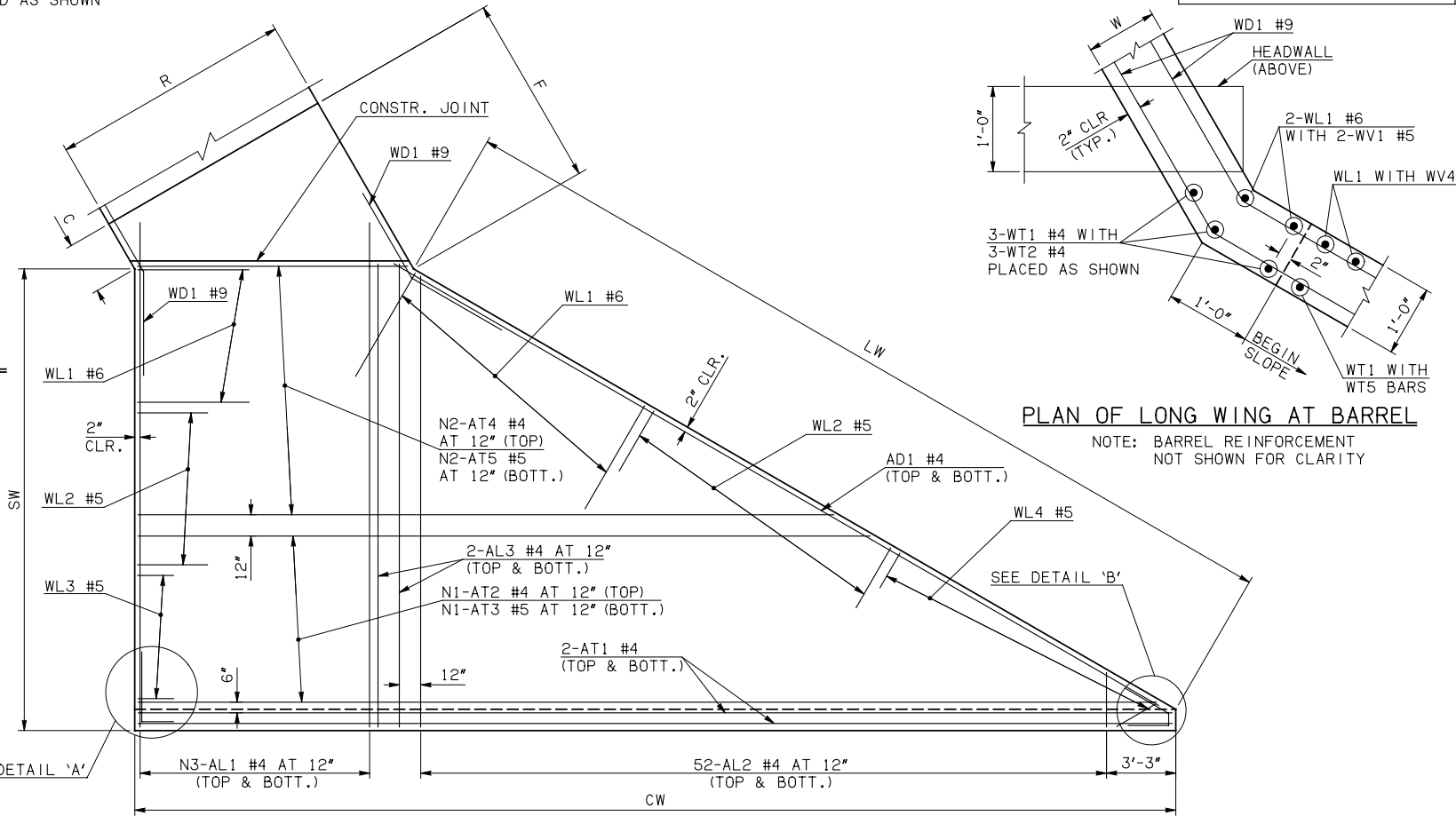


DESCRIPTION	REVISIONS	DATE



**PLAN OF SHORT WING AT BARREL**  
NOTE: BARREL REINFORCEMENT NOT SHOWN FOR CLARITY

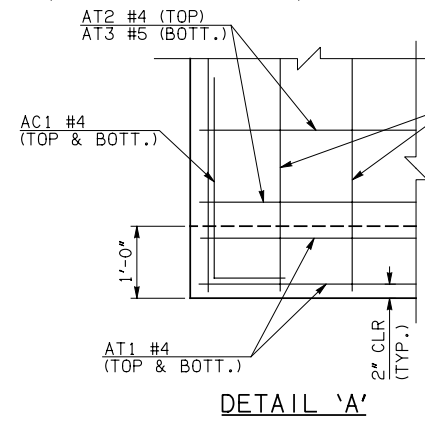


**PLAN OF LONG WING AT BARREL**  
NOTE: BARREL REINFORCEMENT NOT SHOWN FOR CLARITY

**END SECTION PLAN**

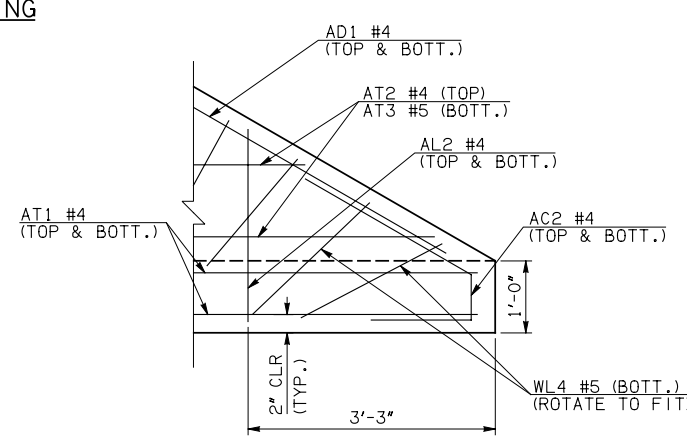
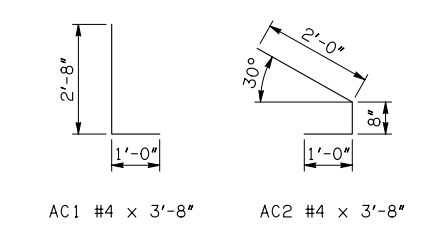
NOTE: SEE END SECTION DETAILS SHEET NO. 2 OF 3 FOR VARIABLE REINFORCING QUANTITIES.

END SECTION VARIABLE DIMENSIONS													
SPAN	W	A	B	C	CW	D	E	F	G	H	LW	R	SW
10'	12"	9'-0"	2'-4 1/4"	3'-2"	80'-9 3/4"	3'-5 1/4"	15'-7 3/4"	16'-3 1/2"	16'-6 3/4"	27'-1 3/4"	62'-8 3/4"	23'-0"	32'-2 3/4"
12'	12"	10'-0"	2'-2 1/2"	3'-0 1/4"	85'-5 1/4"	3'-3 1/2"	17'-9 1/2"	18'-5 1/2"	18'-8 1/2"	31'-9"	62'-8 3/4"	27'-0"	32'-2 3/4"
14'	12"	11'-0"	2'-0 1/2"	2'-10 1/4"	90'-0 1/2"	3'-1 1/2"	19'-11 1/2"	20'-7 1/4"	20'-10 1/2"	36'-4 1/2"	62'-8 3/4"	31'-0"	32'-2 3/4"
16'	13"	13'-0"	2'-10 1/4"	3'-10 1/4"	94'-8"	3'-11 3/4"	23'-1 3/4"	23'-10 3/4"	24'-0 1/4"	41'-2 1/4"	62'-6 3/4"	35'-2"	32'-0 3/4"
18'	14"	14'-0"	2'-7 3/4"	3'-10"	99'-3 1/2"	3'-9 3/4"	25'-4 1/4"	26'-2 1/2"	26'-2 1/4"	46'-0"	62'-4 3/4"	39'-4"	31'-10 3/4"



**DETAIL 'A'**

**APRON REINFORCING**



**DETAIL 'B'**

**APRON BAR LIST**

MARK	SIZE	FORM	ONE APRON SHOWN																				
			10' SPAN				12' SPAN				14' SPAN				16' SPAN				18' SPAN				
			QTY.	LENGTH	REMARKS	REMARKS	QTY.	LENGTH	REMARKS	REMARKS	QTY.	LENGTH	REMARKS	REMARKS	QTY.	LENGTH	REMARKS	REMARKS	QTY.	LENGTH	REMARKS	REMARKS	
	AC1	#4	BNT	2	3'-8"			2	3'-8"			2	3'-8"			2	3'-8"			2	3'-8"		
	AC2	#4	BNT	2	3'-8"			2	3'-8"			2	3'-8"			2	3'-8"			2	3'-8"		
	AD1	#4	STR	2	66'-0"			2	66'-0"			2	66'-0"			2	66'-0"			2	66'-0"		
	AL1	#4	STR	50	34'-9"			60	34'-9"			78	34'-9"			88	34'-9"			88	34'-9"		
	AL2	#4	STR	104	17'-2 1/2" AVG.	2'-6" TO 31'-11"		104	17'-2 1/2" AVG.	2'-6" TO 31'-11"		104	17'-2 1/2" AVG.	2'-6" TO 31'-11"		104	17'-2 1/2" AVG.	2'-6" TO 31'-11"		104	17'-2 1/2" AVG.	2'-6" TO 31'-11"	
	AL3	#4	STR	4	32'-9"			4	32'-9"			4	32'-9"			4	32'-9"			4	32'-9"		
	AT1	#4	STR	4	82'-11"			4	87'-7"			4	92'-2"			4	96'-9"			4	101'-5"		
	AT2	#4	STR	12	72'-8" AVG.	63'-2" TO 82'-2"		15	74'-8 1/2" AVG.	62'-7" TO 86'-10"		17	77'-7" AVG.	63'-9" TO 91'-5"		20	79'-7 1/2" AVG.	63'-2" TO 96'-1"		23	81'-7 1/2" AVG.	62'-7" TO 100'-8"	
	AT3	#5	STR	12	72'-8" AVG.	63'-2" TO 82'-2"		15	74'-8 1/2" AVG.	62'-7" TO 86'-10"		17	77'-7" AVG.	63'-9" TO 91'-5"		20	79'-7 1/2" AVG.	63'-2" TO 96'-1"		23	81'-7 1/2" AVG.	62'-7" TO 100'-8"	
	AT4	#4	STR	20	42'-5 1/2" AVG.	26'-0" TO 58'-11"		17	44'-5 1/2" AVG.	30'-7" TO 58'-4"		15	47'-4 1/2" AVG.	35'-3" TO 59'-6"		12	49'-4 1/2" AVG.	39'-10" TO 58'-11"		9	51'-5" AVG.	44'-6" TO 58'-4"	
	AT5	#5	STR	20	42'-5 1/2" AVG.	26'-0" TO 58'-11"		17	44'-5 1/2" AVG.	30'-7" TO 58'-4"		15	47'-4 1/2" AVG.	35'-3" TO 59'-6"		12	49'-4 1/2" AVG.	39'-10" TO 58'-11"		9	51'-5" AVG.	44'-6" TO 58'-4"	

- ① INCLUDES 2'-6" LAP.
- ② QUANTITY SHOWN REPRESENTS TWO SETS.

APPROVED BY BRIDGE ENGINEER *Robert J. Muech* DATE 4/09/09

**OKLAHOMA DEPT. OF TRANSPORTATION**  
**BRIDGE STANDARD (ENGLISH)**

**RCB CULVERTS - END SECTION DETAILS**  
**DOUBLE CELL - 9'-0" HEIGHT - 30°**  
SHEET NO. 1 OF 3

1999 SPECIFICATIONS | RCB-E2-H9-30-1 | OOE | B-723E