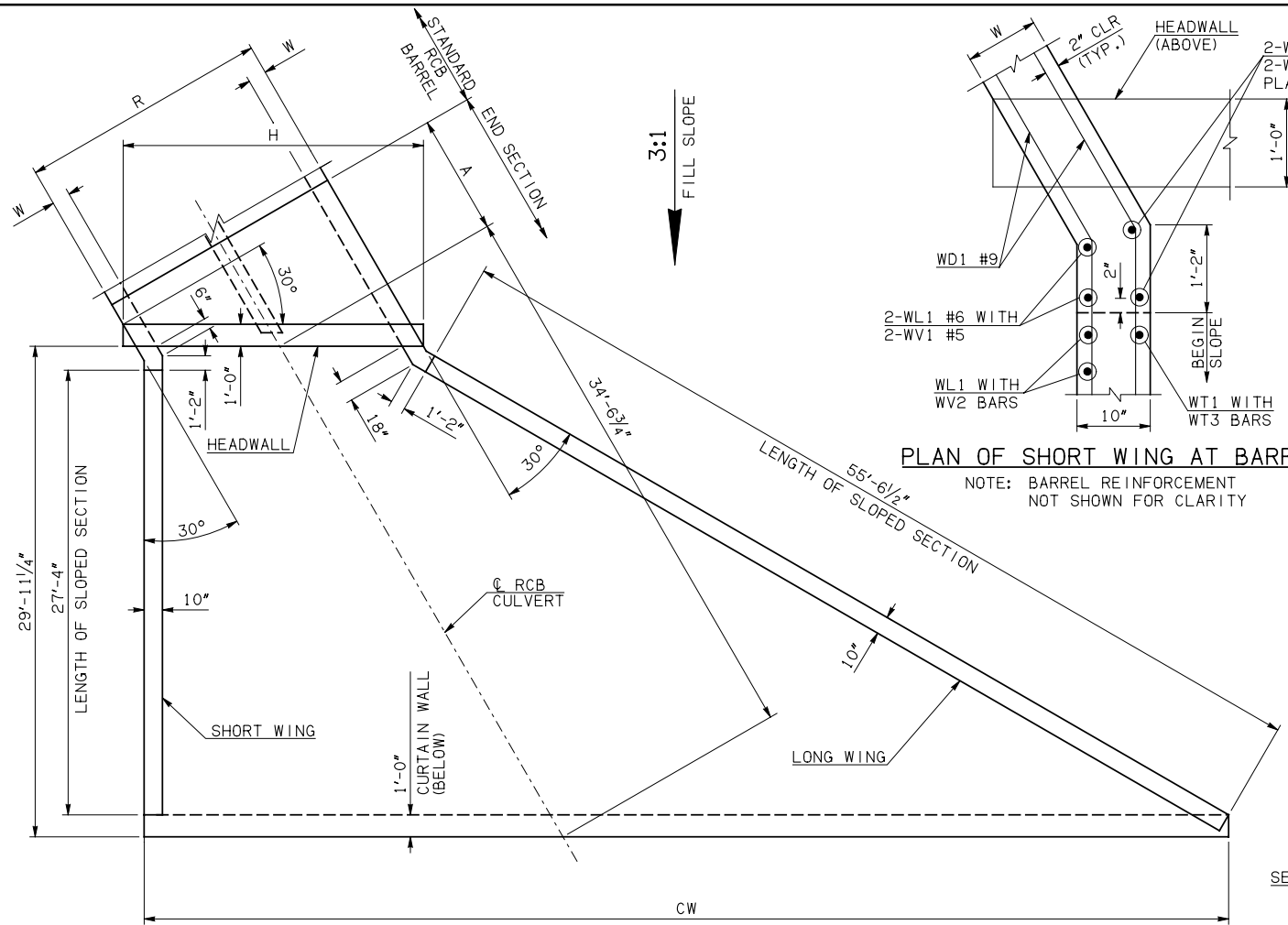
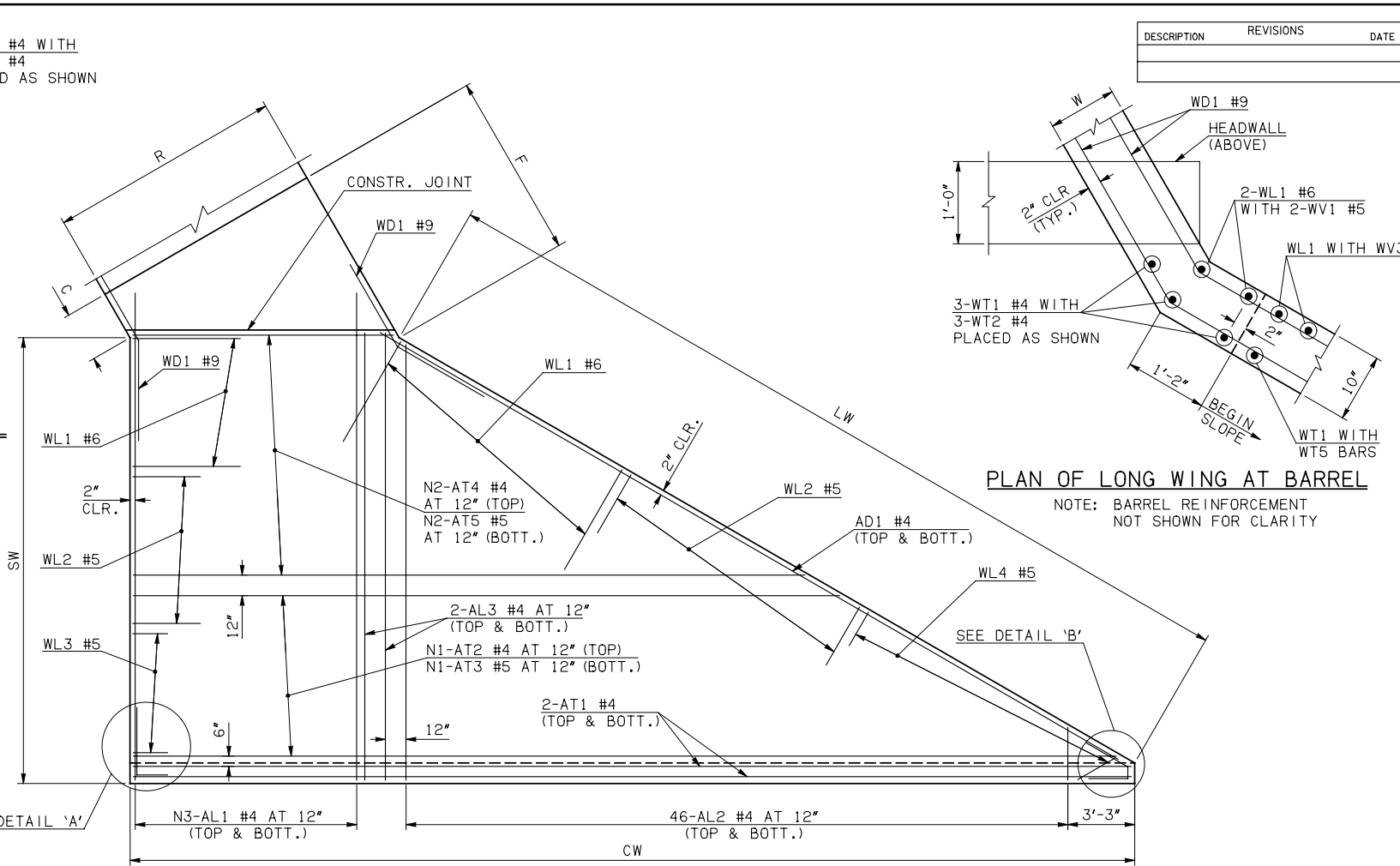


DESCRIPTION	REVISIONS	DATE



**PLAN OF SHORT WING AT BARREL**  
NOTE: BARREL REINFORCEMENT NOT SHOWN FOR CLARITY

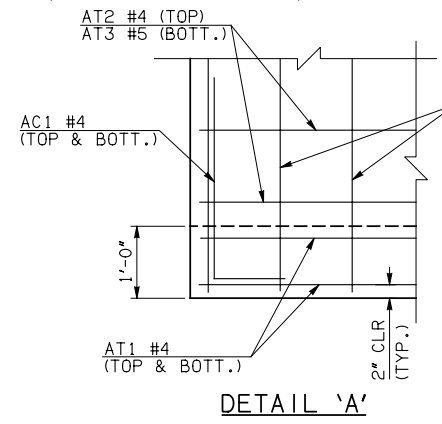


**PLAN OF LONG WING AT BARREL**  
NOTE: BARREL REINFORCEMENT NOT SHOWN FOR CLARITY

**END SECTION PLAN**

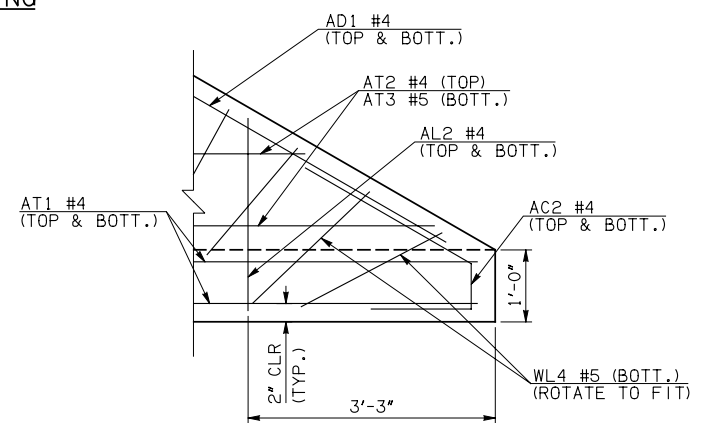
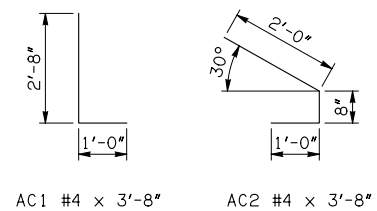
NOTE: SEE END SECTION DETAILS SHEET NO. 2 OF 3 FOR VARIABLE REINFORCING QUANTITIES.

END SECTION VARIABLE DIMENSIONS													
SPAN	W	A	B	C	CW	D	E	F	G	H	LW	R	SW
8'	12"	8'-0"	2'-6 <sup>1</sup> / <sub>4</sub> "	3'-8"	70'-6"	3'-7"	13'-5 <sup>3</sup> / <sub>4</sub> "	14'-5 <sup>3</sup> / <sub>4</sub> "	14'-5"	22'-6 <sup>1</sup> / <sub>4</sub> "	56'-1 <sup>3</sup> / <sub>4</sub> "	19'-0"	28'-11 <sup>1</sup> / <sub>4</sub> "
10'	12"	9'-0"	2'-4 <sup>1</sup> / <sub>4</sub> "	3'-6"	75'-1 <sup>1</sup> / <sub>4</sub> "	3'-5 <sup>1</sup> / <sub>4</sub> "	15'-7 <sup>3</sup> / <sub>4</sub> "	16'-7 <sup>1</sup> / <sub>2</sub> "	16'-6 <sup>3</sup> / <sub>4</sub> "	27'-1 <sup>3</sup> / <sub>4</sub> "	56'-1 <sup>3</sup> / <sub>4</sub> "	23'-0"	28'-11 <sup>1</sup> / <sub>4</sub> "
12'	12"	10'-0"	2'-2 <sup>1</sup> / <sub>2</sub> "	3'-4 <sup>1</sup> / <sub>4</sub> "	79'-8 <sup>3</sup> / <sub>4</sub> "	3'-3 <sup>1</sup> / <sub>2</sub> "	17'-9 <sup>1</sup> / <sub>2</sub> "	18'-9 <sup>1</sup> / <sub>2</sub> "	18'-8 <sup>1</sup> / <sub>2</sub> "	31'-9"	56'-1 <sup>3</sup> / <sub>4</sub> "	27'-0"	28'-11 <sup>1</sup> / <sub>4</sub> "
14'	12"	11'-0"	2'-0 <sup>1</sup> / <sub>2</sub> "	3'-2 <sup>1</sup> / <sub>4</sub> "	84'-4 <sup>1</sup> / <sub>4</sub> "	3'-1 <sup>1</sup> / <sub>2</sub> "	19'-11 <sup>1</sup> / <sub>2</sub> "	20'-11 <sup>1</sup> / <sub>4</sub> "	20'-10 <sup>1</sup> / <sub>2</sub> "	36'-4 <sup>1</sup> / <sub>2</sub> "	56'-1 <sup>3</sup> / <sub>4</sub> "	31'-0"	28'-11 <sup>1</sup> / <sub>4</sub> "
16'	13"	13'-0"	2'-10 <sup>1</sup> / <sub>4</sub> "	4'-2 <sup>1</sup> / <sub>4</sub> "	88'-11 <sup>1</sup> / <sub>2</sub> "	3'-11 <sup>3</sup> / <sub>4</sub> "	23'-1 <sup>3</sup> / <sub>4</sub> "	24'-2 <sup>3</sup> / <sub>4</sub> "	24'-0 <sup>1</sup> / <sub>4</sub> "	41'-2 <sup>1</sup> / <sub>4</sub> "	55'-11 <sup>3</sup> / <sub>4</sub> "	35'-2"	28'-9 <sup>1</sup> / <sub>4</sub> "



**DETAIL 'A'**

**APRON REINFORCING**



**DETAIL 'B'**

- ① INCLUDES 2'-6" LAP.
- ② QUANTITY SHOWN REPRESENTS TWO SETS.

**APRON BAR LIST**

MARK	SIZE	FORM	ONE APRON SHOWN																			
			8' SPAN				10' SPAN				12' SPAN				14' SPAN				16' SPAN			
			QTY.	LENGTH	REMARKS	QTY.	LENGTH	REMARKS	QTY.	LENGTH	REMARKS	QTY.	LENGTH	REMARKS	QTY.	LENGTH	REMARKS					
	AC1	#4	BNT	2	3'-8"		2	3'-8"		2	3'-8"		2	3'-8"		2	3'-8"					
	AC2	#4	BNT	2	3'-8"		2	3'-8"		2	3'-8"		2	3'-8"		2	3'-8"					
①	AD1	#4	STR	2	57'-6"		2	57'-6"		2	57'-6"		2	57'-6"		2	57'-6"					
②	AL1	#4	STR	40	31'-9"		50	31'-9"		60	31'-9"		68	31'-9"		78	31'-9"					
②	AL2	#4	STR	92	15'-5 <sup>1</sup> / <sub>2</sub> " AVG.	2'-6" TO 28'-5"	92	15'-5 <sup>1</sup> / <sub>2</sub> " AVG.	2'-6" TO 28'-5"	92	15'-5 <sup>1</sup> / <sub>2</sub> " AVG.	2'-6" TO 28'-5"	92	15'-5 <sup>1</sup> / <sub>2</sub> " AVG.	2'-6" TO 28'-5"	92	15'-5 <sup>1</sup> / <sub>2</sub> " AVG.	2'-6" TO 28'-5"				
①	AL3	#4	STR	4	29'-9"		4	29'-9"		4	29'-9"		4	29'-9"		4	29'-9"					
①	AT1	#4	STR	4	72'-7"		4	77'-3"		4	81'-10"		4	86'-6"		4	91'-1"					
①	AT2	#4	STR	6	67'-6 <sup>1</sup> / <sub>2</sub> " AVG.	63'-3" TO 71'-10"	9	69'-7" AVG.	62'-8" TO 76'-6"	11	72'-5" AVG.	63'-9" TO 81'-1"	14	74'-6" AVG.	63'-3" TO 85'-9"	17	76'-6" AVG.	62'-8" TO 90'-4"				
①	AT3	#5	STR	6	67'-6 <sup>1</sup> / <sub>2</sub> " AVG.	63'-3" TO 71'-10"	9	69'-7" AVG.	62'-8" TO 76'-6"	11	72'-5" AVG.	63'-9" TO 81'-1"	14	74'-6" AVG.	63'-3" TO 85'-9"	17	76'-6" AVG.	62'-8" TO 90'-4"				
①	AT4	#4	STR	23	39'-11 <sup>1</sup> / <sub>2</sub> " AVG.	20'-11" TO 59'-0"	20	41'-11 <sup>1</sup> / <sub>2</sub> " AVG.	25'-6" TO 58'-5"	18	44'-10" AVG.	30'-1" TO 59'-7"	15	46'-10 <sup>1</sup> / <sub>2</sub> " AVG.	34'-9" TO 59'-0"	12	48'-10 <sup>1</sup> / <sub>2</sub> " AVG.	39'-4" TO 58'-5"				
①	AT5	#5	STR	23	39'-11 <sup>1</sup> / <sub>2</sub> " AVG.	20'-11" TO 59'-0"	20	41'-11 <sup>1</sup> / <sub>2</sub> " AVG.	25'-6" TO 58'-5"	18	44'-10" AVG.	30'-1" TO 59'-7"	15	46'-10 <sup>1</sup> / <sub>2</sub> " AVG.	34'-9" TO 59'-0"	12	48'-10 <sup>1</sup> / <sub>2</sub> " AVG.	39'-4" TO 58'-5"				

APPROVED BY BRIDGE ENGINEER *Robert J. Muech* DATE 4/09/09

**OKLAHOMA DEPT. OF TRANSPORTATION**  
**BRIDGE STANDARD (ENGLISH)**  
RCB CULVERTS - END SECTION DETAILS  
DOUBLE CELL - 8'-0" HEIGHT - 30°  
SHEET NO. 1 OF 3

1999 SPECIFICATIONS | RCB-E2-H8-30-1 | OOE | B-720E