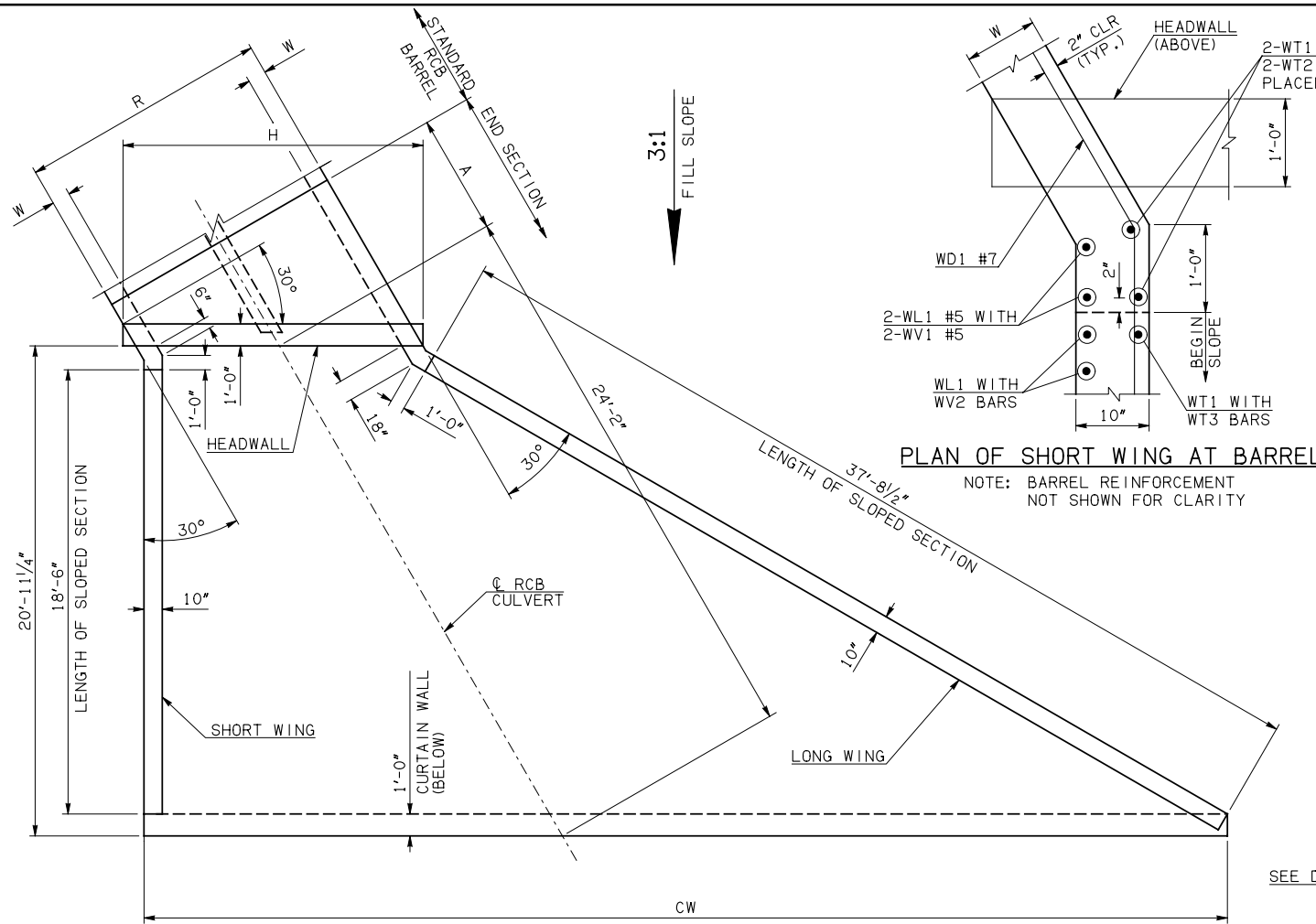


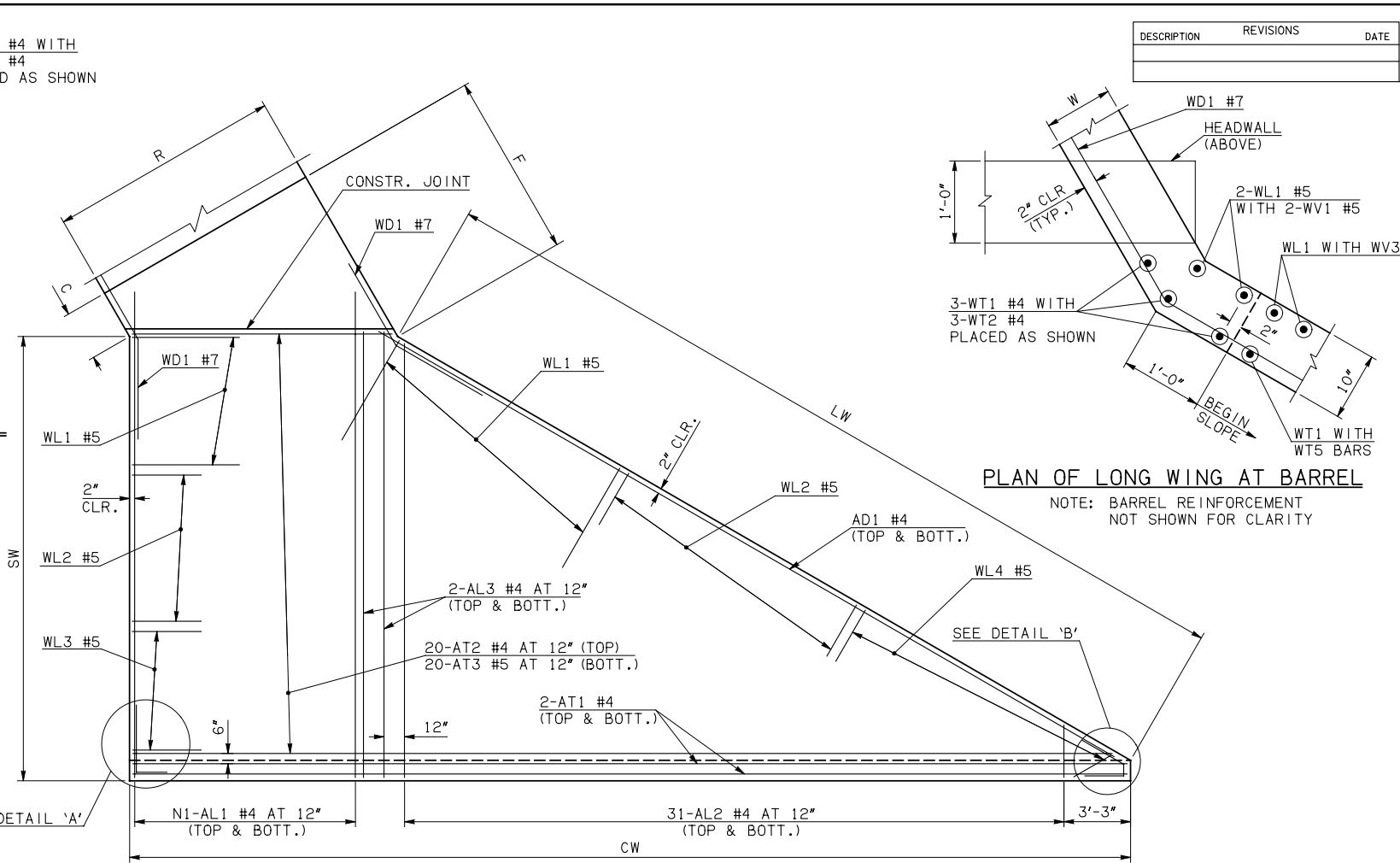
DESCRIPTION	REVISIONS	DATE



END SECTION PLAN

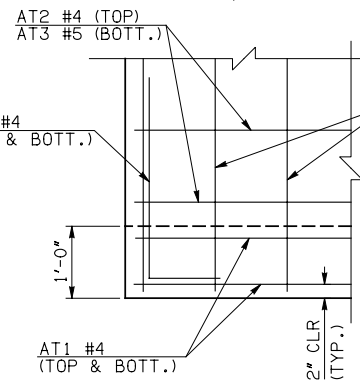
NOTE: SEE END SECTION DETAILS SHEET NO. 2 OF 3 FOR VARIABLE REINFORCING QUANTITIES.

END SECTION VARIABLE DIMENSIONS													
SPAN	W	A	B	C	CW	D	E	F	G	H	LW	R	SW
5'	10"	6'-0"	2'-4 <sup>3</sup> / <sub>4</sub> "	3'-1 <sup>3</sup> / <sub>4</sub> "	47'-9 <sup>1</sup> / <sub>2</sub> "	3'-4 <sup>1</sup> / <sub>2</sub> "	9'-7 <sup>1</sup> / <sub>4</sub> "	10'-4 <sup>3</sup> / <sub>4</sub> "	10'-7 <sup>1</sup> / <sub>2</sub> "	15'-0 <sup>1</sup> / <sub>4</sub> "	38'-5 <sup>3</sup> / <sub>4</sub> "	12'-6"	20'-3 <sup>1</sup> / <sub>4</sub> "
6'	10"	7'-0"	2'-9 <sup>3</sup> / <sub>4</sub> "	3'-6 <sup>3</sup> / <sub>4</sub> "	50'-1"	3'-9 <sup>1</sup> / <sub>2</sub> "	11'-2 <sup>1</sup> / <sub>4</sub> "	11'-11 <sup>3</sup> / <sub>4</sub> "	12'-2 <sup>1</sup> / <sub>2</sub> "	17'-3 <sup>3</sup> / <sub>4</sub> "	38'-5 <sup>3</sup> / <sub>4</sub> "	14'-6"	20'-3 <sup>1</sup> / <sub>4</sub> "
8'	10"	8'-0"	2'-8"	3'-5"	54'-8 <sup>1</sup> / <sub>2</sub> "	3'-7 <sup>3</sup> / <sub>4</sub> "	13'-4"	14'-1 <sup>1</sup> / <sub>4</sub> "	21'-11 <sup>1</sup> / <sub>4</sub> "	38'-5 <sup>3</sup> / <sub>4</sub> "	18'-6"	20'-3 <sup>1</sup> / <sub>4</sub> "	
10'	11"	9'-0"	2'-5 <sup>1</sup> / <sub>4</sub> "	3'-4 <sup>1</sup> / <sub>2</sub> "	59'-5 <sup>1</sup> / <sub>4</sub> "	3'-5 <sup>1</sup> / <sub>2</sub> "	15'-6 <sup>3</sup> / <sub>4</sub> "	16'-5 <sup>1</sup> / <sub>2</sub> "	16'-6 <sup>1</sup> / <sub>2</sub> "	26'-10 <sup>1</sup> / <sub>4</sub> "	38'-3 <sup>3</sup> / <sub>4</sub> "	22'-9"	20'-1 <sup>1</sup> / <sub>4</sub> "



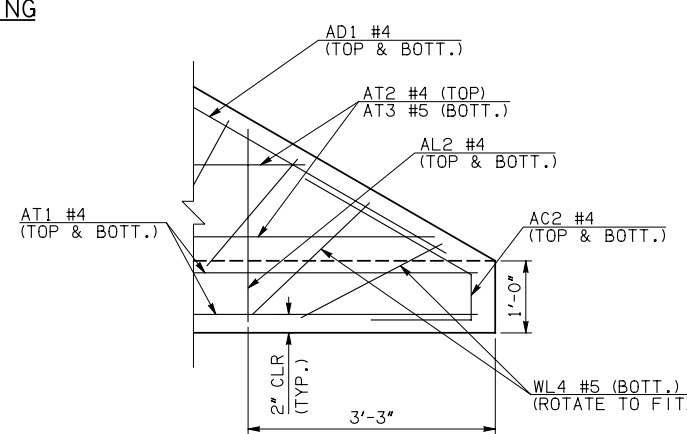
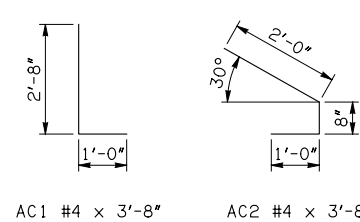
PLAN OF LONG WING AT BARREL

NOTE: BARREL REINFORCEMENT NOT SHOWN FOR CLARITY



DETAIL 'A'

APRON REINFORCING



DETAIL 'B'

① QUANTITY SHOWN REPRESENTS TWO SETS.

APRON BAR LIST														
ONE APRON SHOWN														
MARK	SIZE	FORM	5' SPAN			6' SPAN			8' SPAN			10' SPAN		
			QTY.	LENGTH	REMARKS	QTY.	LENGTH	REMARKS	QTY.	LENGTH	REMARKS	QTY.	LENGTH	REMARKS
AC1	#4	BNT	2	3'-8"		2	3'-8"		2	3'-8"		2	3'-8"	
AC2	#4	BNT	2	3'-8"		2	3'-8"		2	3'-8"		2	3'-8"	
AD1	#4	STR	2	39'-6"		2	39'-6"		2	39'-6"		2	39'-6"	
AL1	#4	STR	26	22'-9"		30	22'-9"		40	22'-9"		50	22'-9"	
AL2	#4	STR	62	11'-2" AVG.	2'-6" TO 19'-10"	62	11'-2" AVG.	2'-6" TO 19'-10"	62	11'-2" AVG.	2'-6" TO 19'-10"	62	11'-2" AVG.	2'-6" TO 19'-10"
AL3	#4	STR	4	20'-9"		4	20'-9"		4	20'-9"		4	20'-9"	
AT1	#4	STR	4	47'-5"		4	49'-9"		4	54'-4"		4	59'-1"	
AT2	#4	STR	20	30'-2 <sup>1</sup> / <sub>2</sub> " AVG.	13'-9" TO 46'-8"	20	32'-6 <sup>1</sup> / <sub>2</sub> " AVG.	16'-1" TO 49'-0"	20	37'-1 <sup>1</sup> / <sub>2</sub> " AVG.	20'-8" TO 53'-7"	20	41'-10 <sup>1</sup> / <sub>2</sub> " AVG.	25'-5" TO 58'-4"
AT3	#5	STR	20	30'-2 <sup>1</sup> / <sub>2</sub> " AVG.	13'-9" TO 46'-8"	20	32'-6 <sup>1</sup> / <sub>2</sub> " AVG.	16'-1" TO 49'-0"	20	37'-1 <sup>1</sup> / <sub>2</sub> " AVG.	20'-8" TO 53'-7"	20	41'-10 <sup>1</sup> / <sub>2</sub> " AVG.	25'-5" TO 58'-4"

APPROVED BY BRIDGE ENGINEER *Debra J. Nuss* DATE 4/09/09

**OKLAHOMA DEPT. OF TRANSPORTATION**  
**BRIDGE STANDARD (ENGLISH)**  
 RCB CULVERTS - END SECTION DETAILS  
 DOUBLE CELL - 5'-0" HEIGHT - 30°  
 SHEET NO. 1 OF 3

1999 SPECIFICATIONS RCB-E2-H5-30-1 OOE B-711E