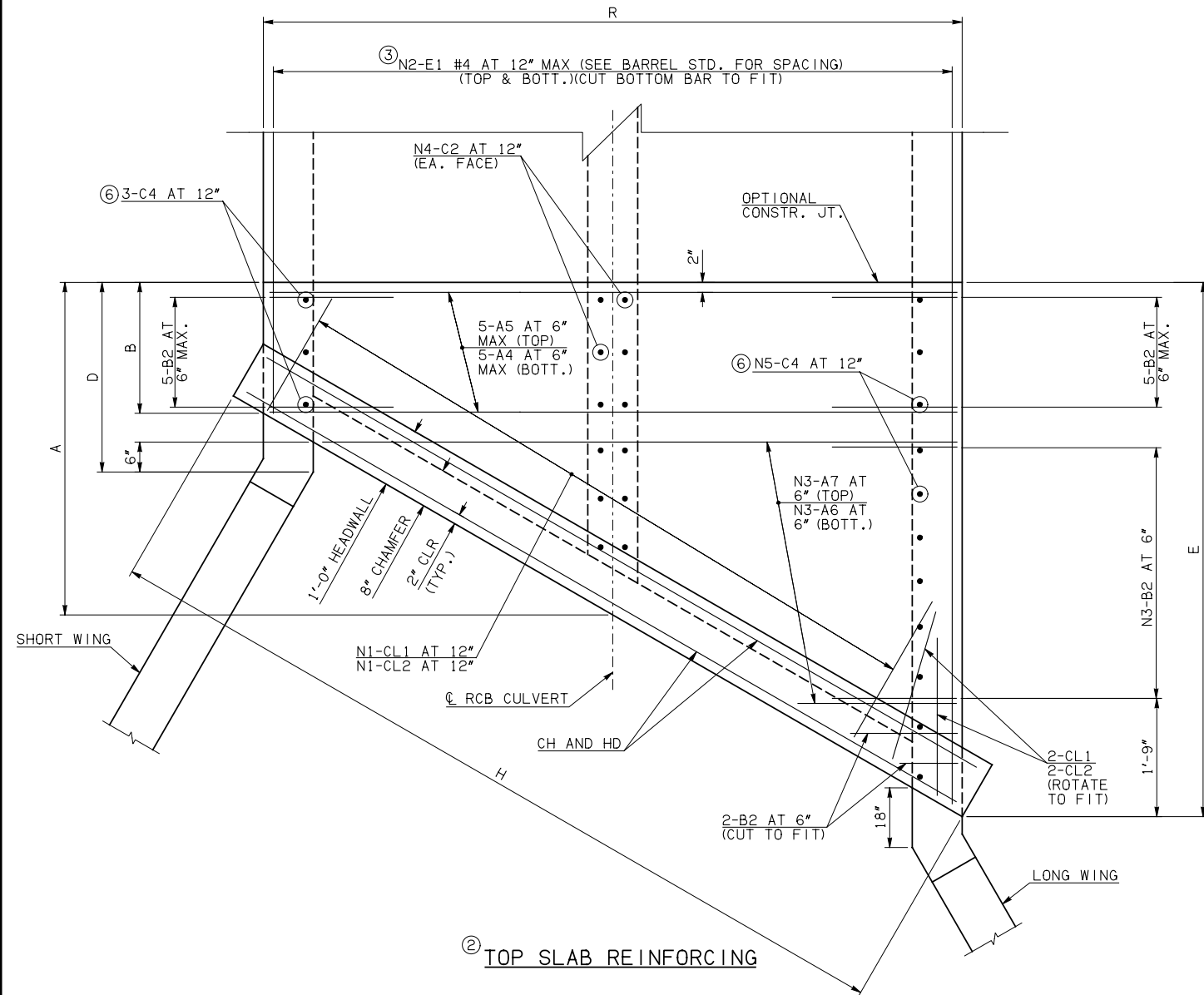
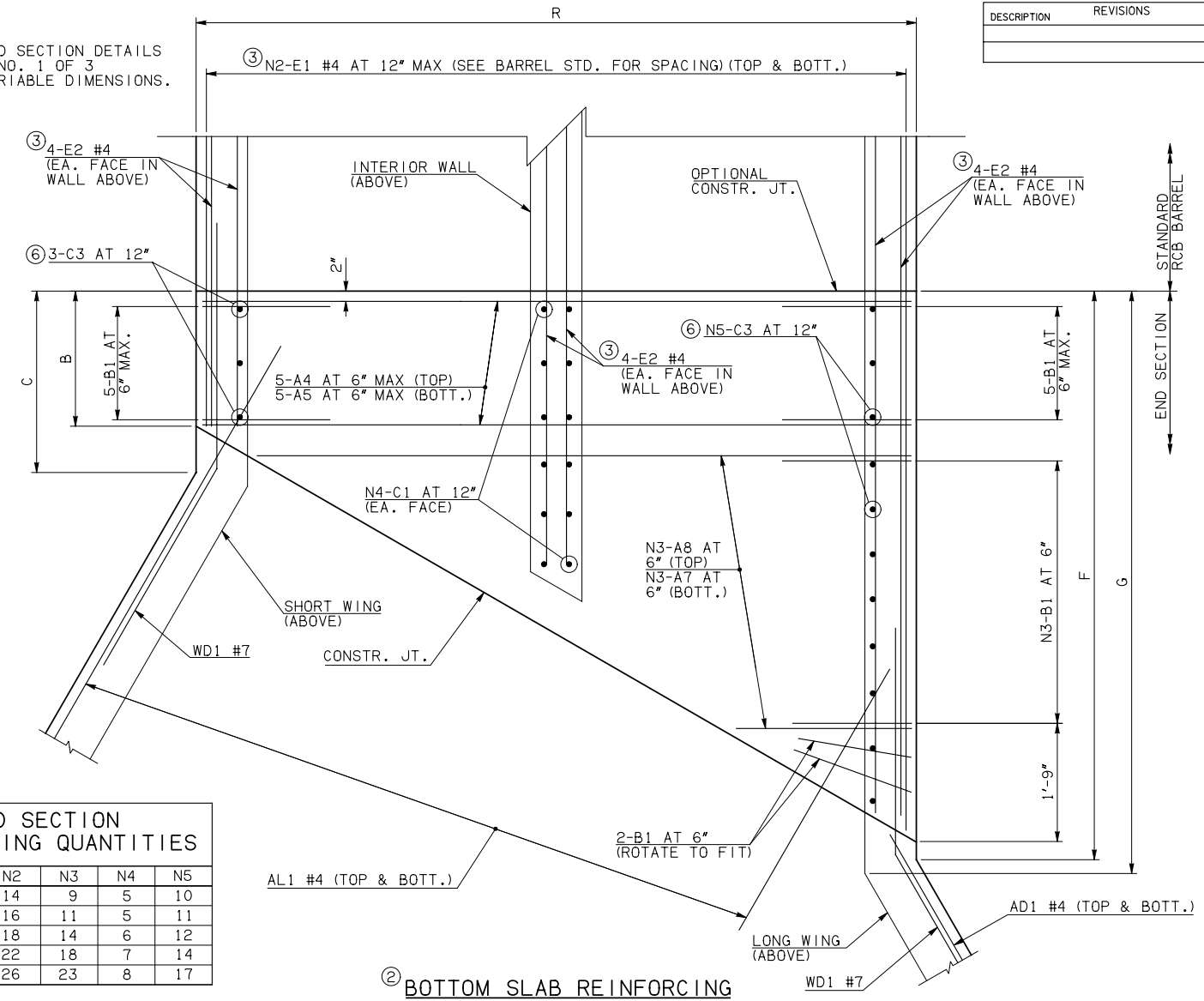


DESCRIPTION	REVISIONS	DATE



NOTE: SEE END SECTION DETAILS SHEET NO. 1 OF 3 FOR VARIABLE DIMENSIONS.



END SECTION REINFORCING QUANTITIES

SPAN	N1	N2	N3	N4	N5
4'	11	14	9	5	10
5'	13	16	11	5	11
6'	15	18	14	6	12
8'	20	22	18	7	14
10'	24	26	23	8	17

END CONNECTION BAR LIST

MARK	FORM	ONE END CONNECTION SHOWN																		
		4' SPAN				5' SPAN				6' SPAN				8' SPAN				10' SPAN		
SIZE	QTY.	LENGTH	REMARKS	SIZE	QTY.	LENGTH	REMARKS	SIZE	QTY.	LENGTH	REMARKS	SIZE	QTY.	LENGTH	REMARKS	SIZE	QTY.	LENGTH	REMARKS	
A4	STR	#5	10	10'-2"	#5	10	12'-2"	#5	10	14'-2"	#5	10	18'-2"	#5	10	22'-2"				
A5	STR	#4	10	10'-2"	#5	10	12'-2"	#6	10	14'-2"	#7	10	18'-2"	#7	10	22'-2"				
A6	STR	#5	9	4'-9 1/2" AVG.	#6	11	5'-8" AVG.	#6	14	6'-11 1/2" AVG.	#7	18	8'-8 1/2" AVG.	#7	23	10'-10 1/2" AVG.	1'-4" TO 8'-3"	1'-4" TO 10'-0"	1'-4" TO 12'-7"	1'-4" TO 16'-1"
A7	STR	#4	18	5'-11 1/2" AVG.	#5	22	6'-10" AVG.	#6	28	8'-1 1/2" AVG.	#7	36	9'-10 1/2" AVG.	#7	46	12'-0 1/2" AVG.	2'-6" TO 9'-5"	2'-6" TO 11'-2"	2'-6" TO 13'-9"	2'-6" TO 17'-3"
A8	STR	#5	9	5'-11 1/2" AVG.	#6	11	6'-10" AVG.	#6	14	8'-1 1/2" AVG.	#7	18	9'-10 1/2" AVG.	#7	23	12'-0 1/2" AVG.	2'-6" TO 9'-5"	2'-6" TO 11'-2"	2'-6" TO 13'-9"	2'-6" TO 17'-3"
B1	BNT	#5	21	4'-0"	#5	23	4'-0"	#4	26	3'-0"	#4	30	3'-9"	#5	35	4'-6"				
B2	BNT	#5	21	6'-4"	#5	23	6'-4"	#4	26	5'-8"	#4	30	6'-5"	#5	35	6'-10"				
C1	STR	#4	10	2'-0"	#4	10	2'-0"	#4	12	2'-0"	#4	14	2'-1"	#4	16	2'-2"				
C2	STR	#4	10	4'-8"	#4	10	4'-8"	#4	12	4'-8"	#4	14	4'-9"	#4	16	4'-10"				
C3	STR	#4	13	2'-0"	#4	14	2'-0"	#4	15	2'-0"	#4	17	2'-1"	#4	20	2'-2"				
C4	STR	#4	13	4'-8"	#4	14	4'-8"	#4	15	4'-8"	#4	17	4'-9"	#4	20	4'-10"				
E1	STR	#4	56	5'-9" AVG.	#4	64	5'-9" AVG.	#4	72	6'-9" AVG.	#4	88	7'-9" AVG.	#4	104	8'-9" AVG.	2'-10" TO 8'-8"	2'-3" TO 9'-3"	2'-8" TO 10'-10"	2'-4" TO 15'-2"
E2	STR	#4	24	5'-4 1/2" AVG.	#4	24	5'-4 1/2" AVG.	#4	24	6'-4 1/2" AVG.	#4	24	7'-4 1/2" AVG.	#4	24	8'-4 1/2" AVG.	2'-10", 4'-10", 8'-5"	2'-3", 4'-10", 9'-0"	2'-8", 5'-10", 10'-7"	2'-4", 7'-10", 14'-11"

QUANTITIES

ITEM	UNIT	4' SPAN	5' SPAN	6' SPAN	8' SPAN	10' SPAN
CLASS AA CONCRETE	CY	25.80	28.00	31.50	38.50	46.70
REINFORCING STEEL	LB	3910.00	4390.00	4950.00	6470.00	8320.00

NOTE: QUANTITIES ABOVE ARE FOR ONE END SECTION, WHICH IS COMPRISED OF ONE END CONNECTION, ONE HEADWALL, ONE APRON, AND TWO WINGWALLS.

- NOTES: ① QUANTITY SHOWN REPRESENTS TWO SETS. ② FOR FURTHER INFORMATION REGARDING END SECTION A, B, C, AND E BARS REFER TO RCB CULVERT - BARREL DETAILS. ③ LENGTHS OF E1 & E2 BARS SHOWN ARE ADDITIONAL LENGTHS REQUIRED FOR THE END SECTION. LAP SPLICES, AS REQUIRED, SHALL BE IN ACCORDANCE WITH RCB BARREL STANDARD NOTES. ④ 4-SETS OF N2-E1 BARS REQUIRED. ⑤ 3-SETS OF 8-E2 BARS REQUIRED WITH LENGTHS AS SHOWN CORRESPONDING TO SHORT EXTERIOR WALL, INTERIOR WALL, AND LONG EXTERIOR WALL. ⑥ C3 AND C4 BAR SIZE AND SPACING MAY DIFFER FROM BARREL SECTION.

APPROVED BY BRIDGE ENGINEER *Robert J. Nuss* DATE 4/09/09

OKLAHOMA DEPT. OF TRANSPORTATION
BRIDGE STANDARD (ENGLISH)
RCB CULVERTS - END SECTION DETAILS
DOUBLE CELL - 4'-0" HEIGHT - 30°
 SHEET NO. 2 OF 3

1999 SPECIFICATIONS RCB-E2-H4-30-2 OOE B-709E