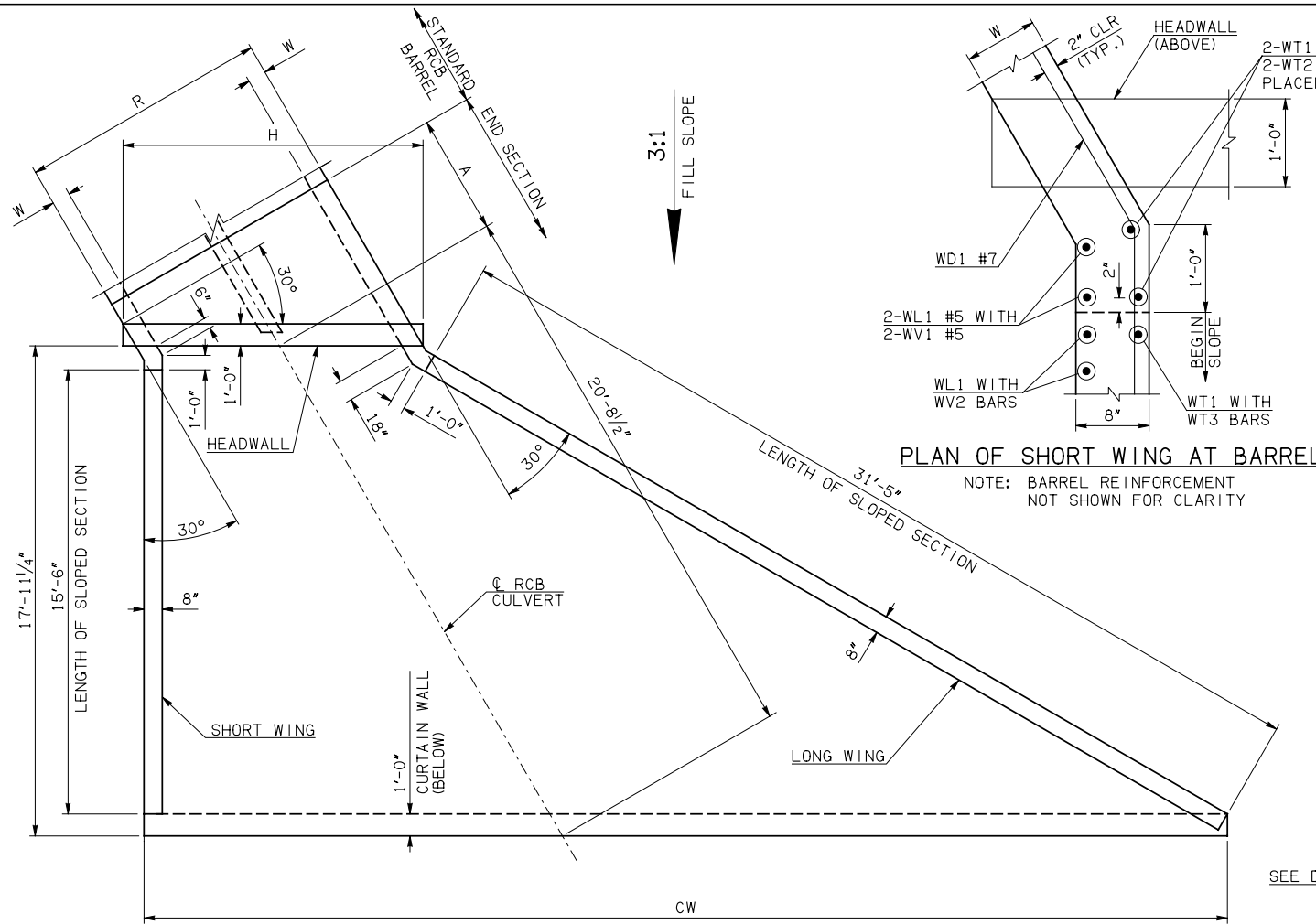


DESCRIPTION	REVISIONS	DATE



END SECTION PLAN

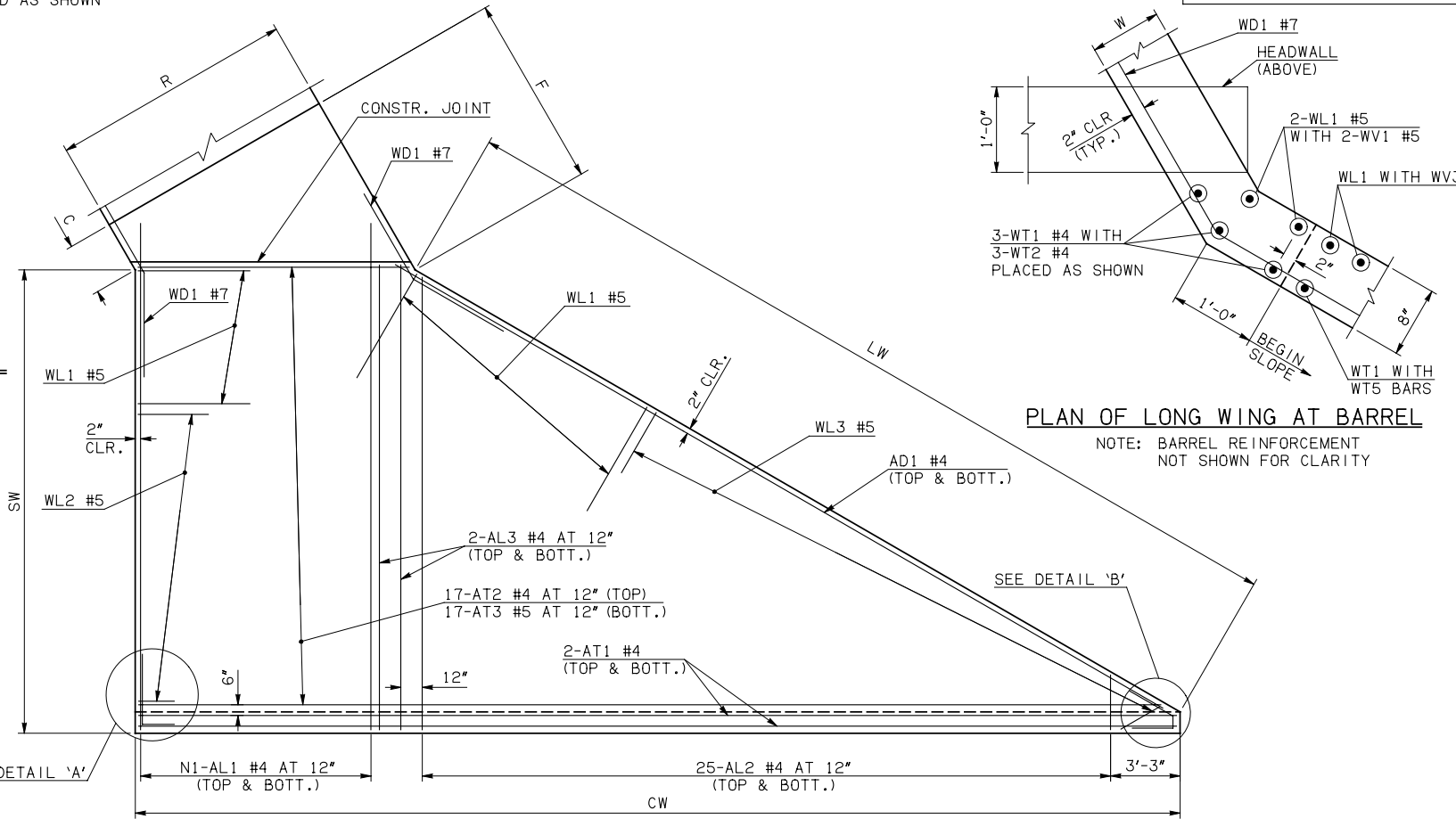
NOTE: SEE END SECTION DETAILS SHEET NO. 2 OF 3 FOR VARIABLE REINFORCING QUANTITIES.

END SECTION VARIABLE DIMENSIONS

SPAN	W	A	B	C	CW	D	E	F	G	H	LW	R	SW
4'	10"	6'-0"	2'-11 3/4"	4'-0 3/4"	39'-9 1/4"	3'-11 1/2"	9'-0 1/4"	10'-2"	10'-0 1/2"	12'-8 1/2"	31'-11"	10'-6"	16'-11 3/4"
5'	10"	6'-0"	2'-4 3/4"	3'-5 3/4"	42'-1"	3'-4 1/2"	9'-7 1/4"	10'-8 3/4"	10'-7 1/2"	15'-0 1/4"	31'-11"	12'-6"	16'-11 3/4"
6'	10"	7'-0"	2'-9 3/4"	3'-10 3/4"	44'-4 3/4"	3'-9 1/2"	11'-2 1/4"	12'-3 3/4"	12'-2 1/2"	17'-3 3/4"	31'-11"	14'-6"	16'-11 3/4"
8'	10"	8'-0"	2'-8"	3'-9"	49'-0 1/4"	3'-7 3/4"	13'-4"	14'-5 3/4"	14'-4 1/4"	21'-11 1/4"	31'-11"	18'-6"	16'-11 3/4"
10'	10"	9'-0"	2'-6"	3'-7 1/4"	53'-7 1/2"	3'-5 3/4"	15'-6"	16'-7 1/2"	16'-6 1/4"	26'-6 3/4"	31'-11"	22'-6"	16'-11 3/4"

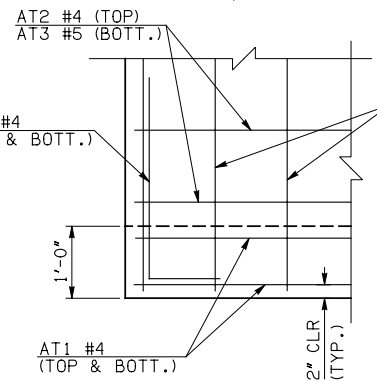
PLAN OF SHORT WING AT BARREL

NOTE: BARREL REINFORCEMENT NOT SHOWN FOR CLARITY



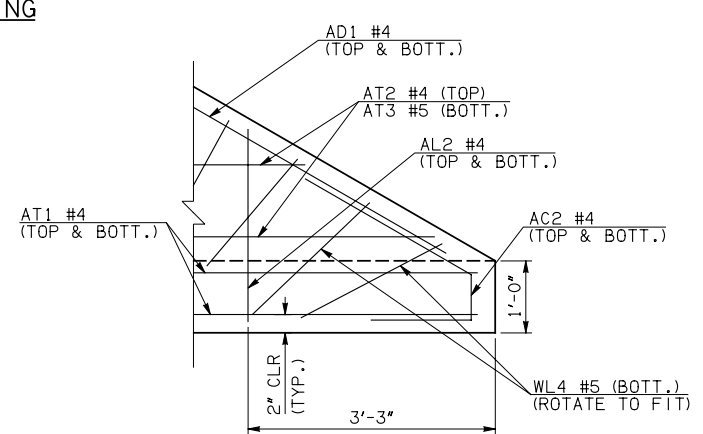
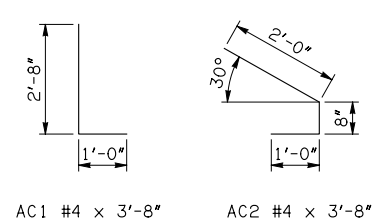
PLAN OF LONG WING AT BARREL

NOTE: BARREL REINFORCEMENT NOT SHOWN FOR CLARITY



DETAIL 'A'

APRON REINFORCING



DETAIL 'B'

APRON BAR LIST

ONE APRON SHOWN

MARK	SIZE	FORM	4' SPAN			5' SPAN			6' SPAN			8' SPAN			10' SPAN		
			QTY.	LENGTH	REMARKS	QTY.	LENGTH	REMARKS	QTY.	LENGTH	REMARKS	QTY.	LENGTH	REMARKS	QTY.	LENGTH	REMARKS
AC1	#4	BNT	2	3'-8"		2	3'-8"		2	3'-8"		2	3'-8"		2	3'-8"	
AC2	#4	BNT	2	3'-8"		2	3'-8"		2	3'-8"		2	3'-8"		2	3'-8"	
AD1	#4	STR	2	33'-6"		2	33'-6"		2	33'-6"		2	33'-6"		2	33'-6"	
AL1	#4	STR	22	19'-9"		26	19'-9"		30	19'-9"		40	19'-9"		48	19'-9"	
AL2	#4	STR	50	9'-5" AVG.	2'-6" TO 16'-4"	50	9'-5" AVG.	2'-6" TO 16'-4"	50	9'-5" AVG.	2'-6" TO 16'-4"	50	9'-5" AVG.	2'-6" TO 16'-4"	50	9'-5" AVG.	2'-6" TO 16'-4"
AL3	#4	STR	4	17'-9"		4	17'-9"		4	17'-9"		4	17'-9"		4	17'-9"	
AT1	#4	STR	4	39'-5"		4	41'-9"		4	44'-0"		4	48'-8"		4	53'-3"	
AT2	#4	STR	17	24'-9 1/2" AVG.	10'-11" TO 38'-8"	17	27'-1 1/2" AVG.	13'-3" TO 41'-0"	17	29'-5" AVG.	15'-7" TO 43'-3"	17	34'-0 1/2" AVG.	20'-2" TO 47'-11"	17	38'-8" AVG.	24'-10" TO 52'-6"
AT3	#5	STR	17	24'-9 1/2" AVG.	10'-11" TO 38'-8"	17	27'-1 1/2" AVG.	13'-3" TO 41'-0"	17	29'-5" AVG.	15'-7" TO 43'-3"	17	34'-0 1/2" AVG.	20'-2" TO 47'-11"	17	38'-8" AVG.	24'-10" TO 52'-6"

① QUANTITY SHOWN REPRESENTS TWO SETS.

APPROVED BY BRIDGE ENGINEER *Robert J. Nisch* DATE 4/09/09

OKLAHOMA DEPT. OF TRANSPORTATION  
 BRIDGE STANDARD (ENGLISH)  
 RCB CULVERTS - END SECTION DETAILS  
 DOUBLE CELL - 4'-0" HEIGHT - 30°  
 SHEET NO. 1 OF 3