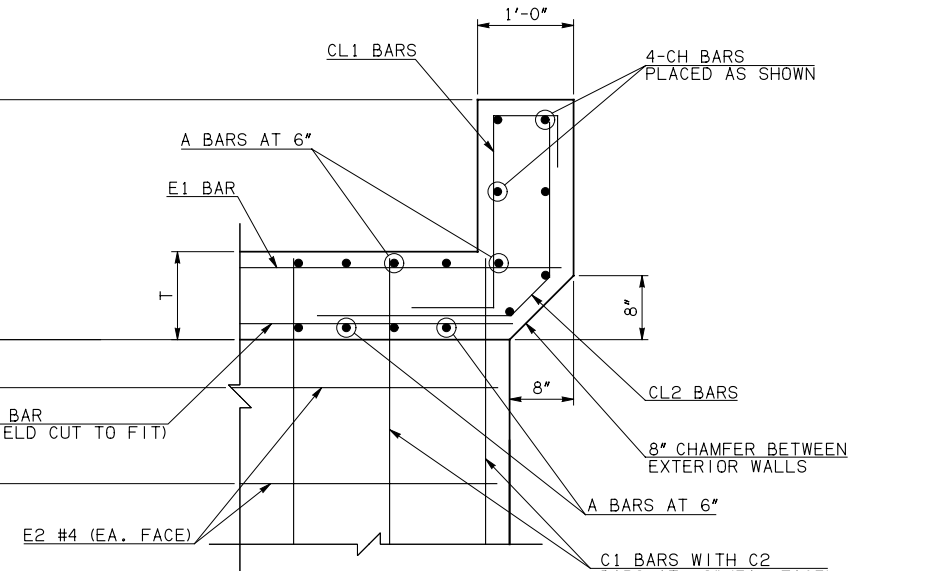
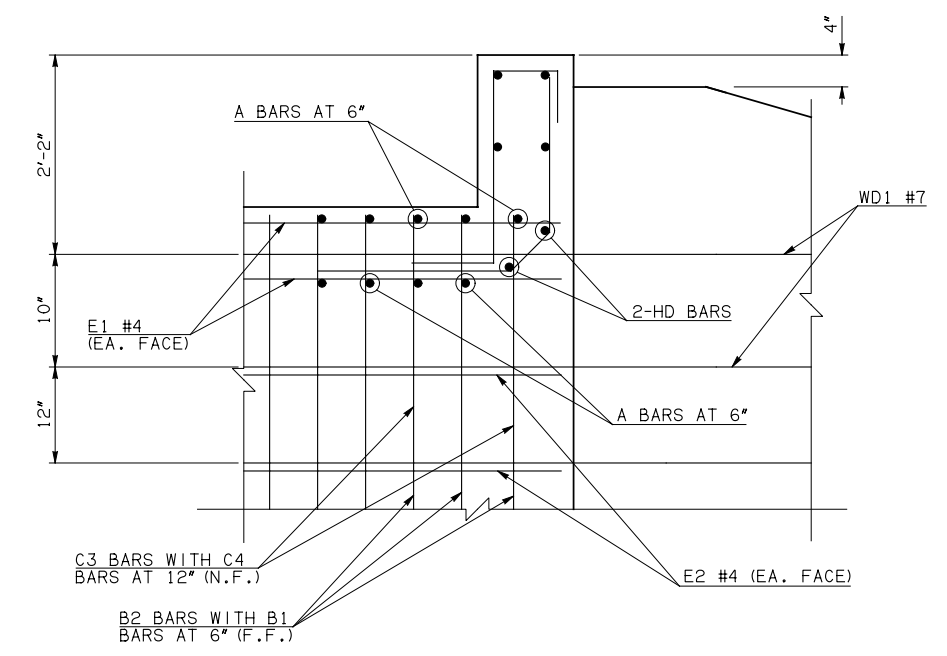
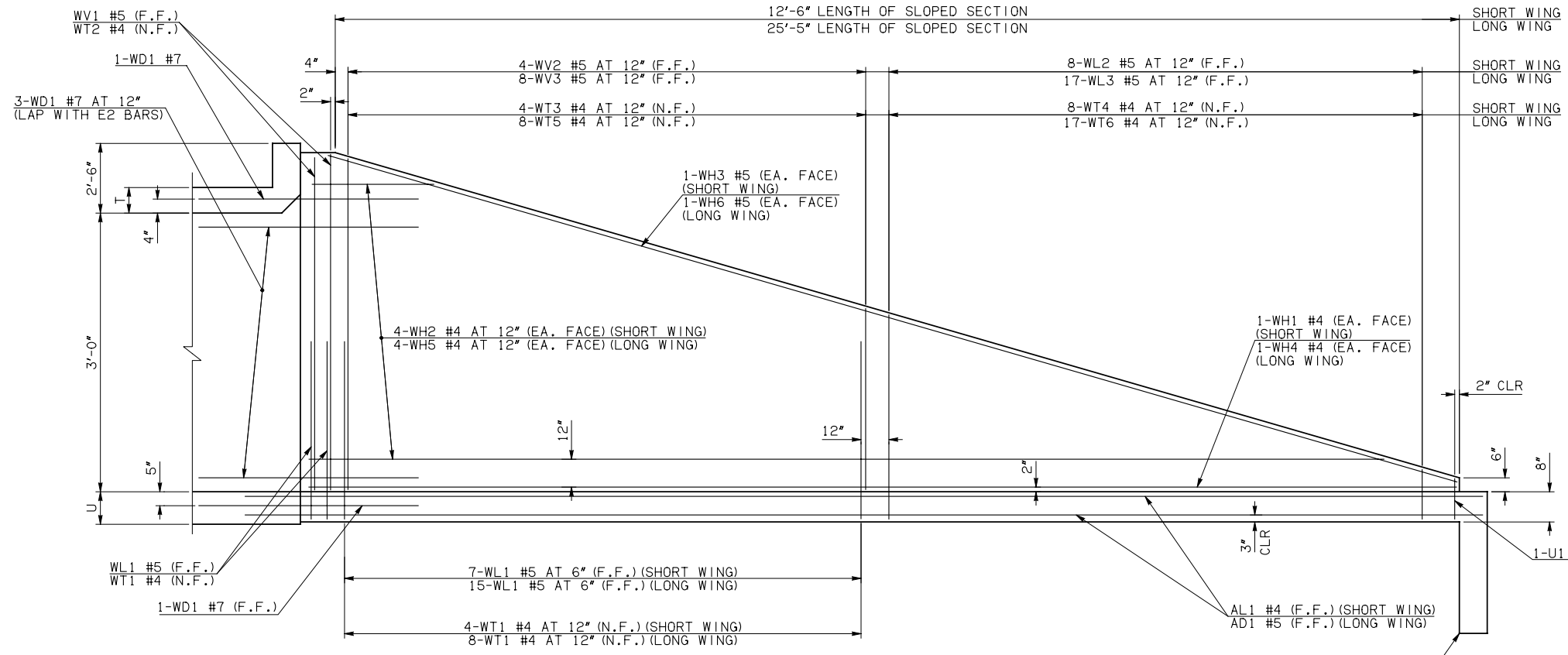
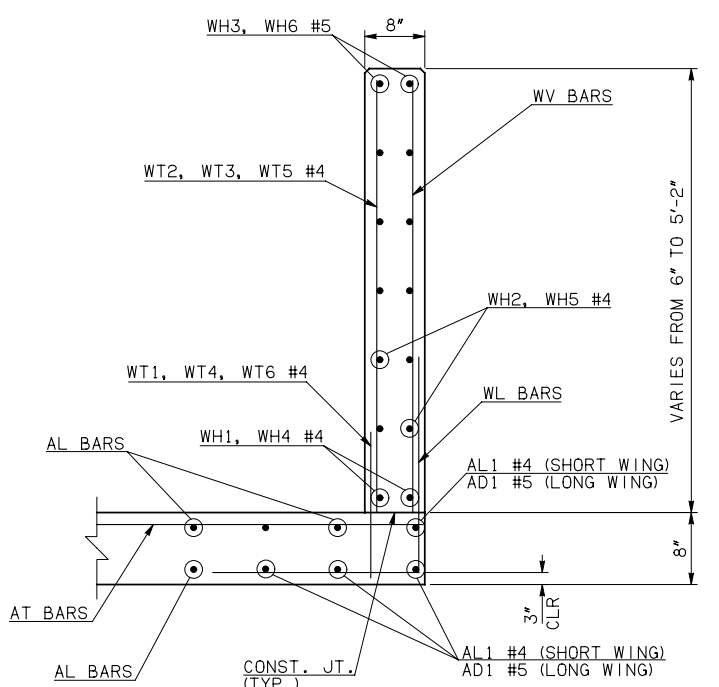


DESCRIPTION	REVISIONS	DATE



NOTE: F.F. = FAR FACE
N.F. = NEAR FACE

WING ELEVATION



TYPICAL SECTION THRU WING

WINGWALL BAR LIST (LONG AND SHORT WING INCLUDED)					
MARK	SIZE	QTY.	FORM	LENGTH	REMARKS
WD1	#7	10	BNT	8'-4"	
WH1	#4	2	STR	13'-4"	
① WH2	#4	8	STR	7'-2" AVG.	3'-2" TO 11'-2"
WH3	#5	2	STR	13'-1"	
WH4	#4	2	STR	26'-3"	
① WH5	#4	8	STR	13'-7 1/2" AVG.	5'-5" TO 21'-10"
WH6	#5	2	STR	25'-8"	
WL1	#5	26	BNT	6'-1"	
WL2	#5	8	BNT	4'-5 1/2" AVG.	3'-2" TO 5'-9"
WL3	#5	17	BNT	4'-4 1/2" AVG.	2'-11" TO 5'-10"
WT1	#4	17	STR	2'-10"	
WT2	#4	5	STR	5'-0"	
WT3	#4	4	STR	4'-3" AVG.	3'-8" TO 4'-10"
WT4	#4	8	STR	2'-5 1/2" AVG.	1'-2" TO 3'-9"
WT5	#4	8	STR	4'-3" AVG.	3'-7" TO 4'-11"
WT6	#4	17	STR	2'-4 1/2" AVG.	11" TO 3'-10"
WV1	#5	4	STR	5'-0"	
WV2	#5	4	STR	4'-3" AVG.	3'-8" TO 4'-10"
WV3	#5	8	STR	4'-3" AVG.	3'-7" TO 4'-11"
U1	#4	2	BNT	1'-10"	

HEADWALL BAR LIST																
ONE HEADWALL SHOWN																
MARK	FORM	4' SPAN			5' SPAN			6' SPAN			8' SPAN			10' SPAN		
		SIZE	QTY.	LENGTH	SIZE	QTY.	LENGTH	SIZE	QTY.	LENGTH	SIZE	QTY.	LENGTH	SIZE	QTY.	LENGTH
CH	STR	#4	4	12'-4"	#4	4	14'-8"	#4	4	16'-11"	#4	4	21'-7"	#6	4	26'-2"
CL1	BNT	#4	13	4'-4"	#4	15	4'-4"	#4	17	4'-4"	#4	22	4'-4"	#5	26	4'-4"
CL2	BNT	#4	13	4'-3"	#4	15	4'-3"	#4	17	4'-3"	#4	22	4'-3"	#5	26	4'-3"
HD	STR	#6	2	12'-4"	#6	2	14'-8"	#6	2	16'-11"	#6	2	21'-7"	#8	2	26'-2"

HEADWALL DETAIL AT INTERIOR WALL
DIMENSION SHOWN NORMAL TO HEADWALL

NOTES:
 ① QUANTITY SHOWN REPRESENTS TWO SETS.
 ② FOR FURTHER INFORMATION REGARDING END SECTION A, B, C, AND E BARS REFER TO RCB CULVERT - BARREL DETAILS.

APPROVED BY BRIDGE ENGINEER *Robert J. Muehl* DATE 4/09/09

OKLAHOMA DEPT. OF TRANSPORTATION
BRIDGE STANDARD (ENGLISH)
 RCB CULVERTS - END SECTION DETAILS
 DOUBLE CELL - 3'-0" HEIGHT - 30°
 SHEET NO. 3 OF 3

1999 SPECIFICATIONS RCB-E2-H3-30-3 OOE B-707E