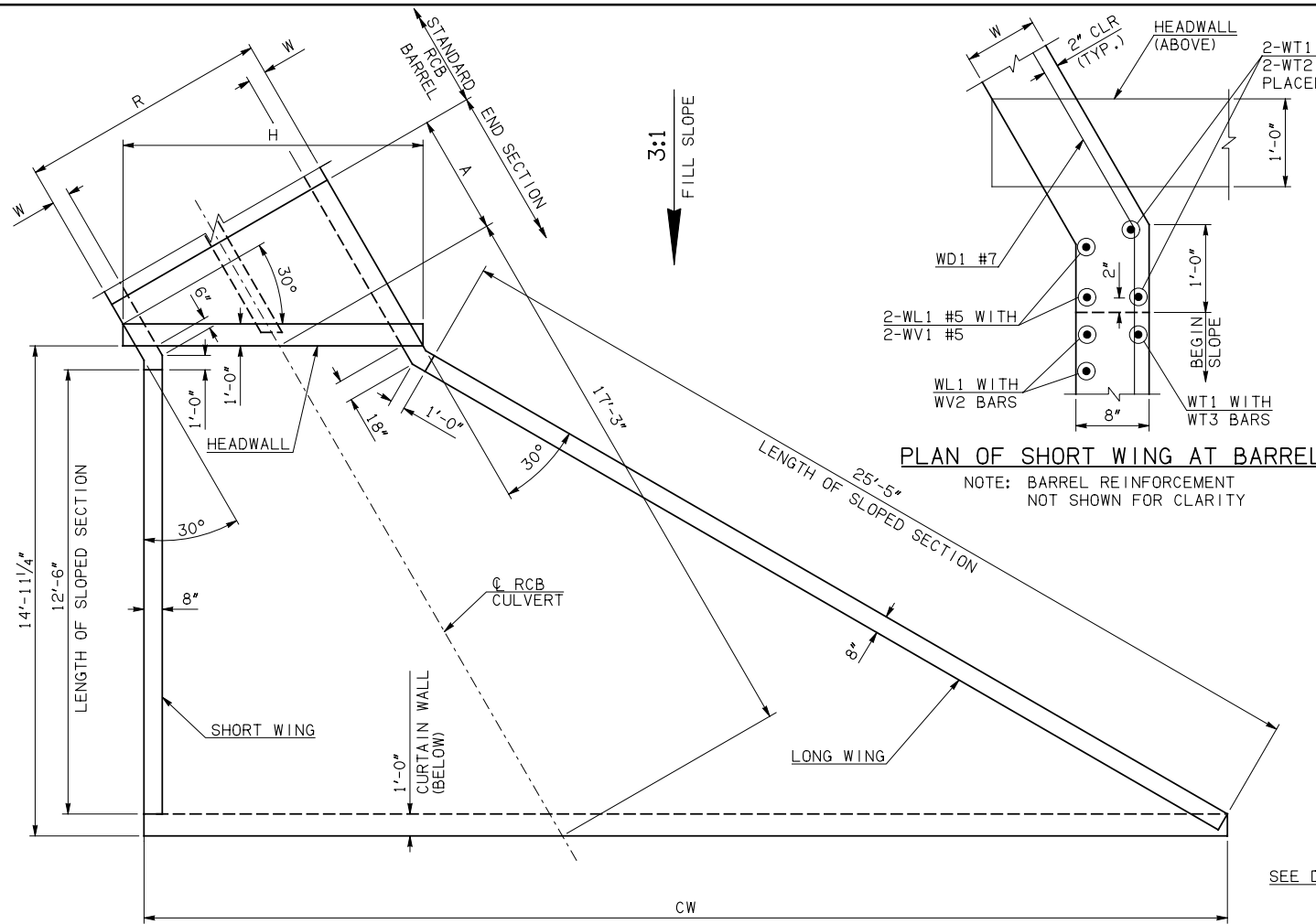
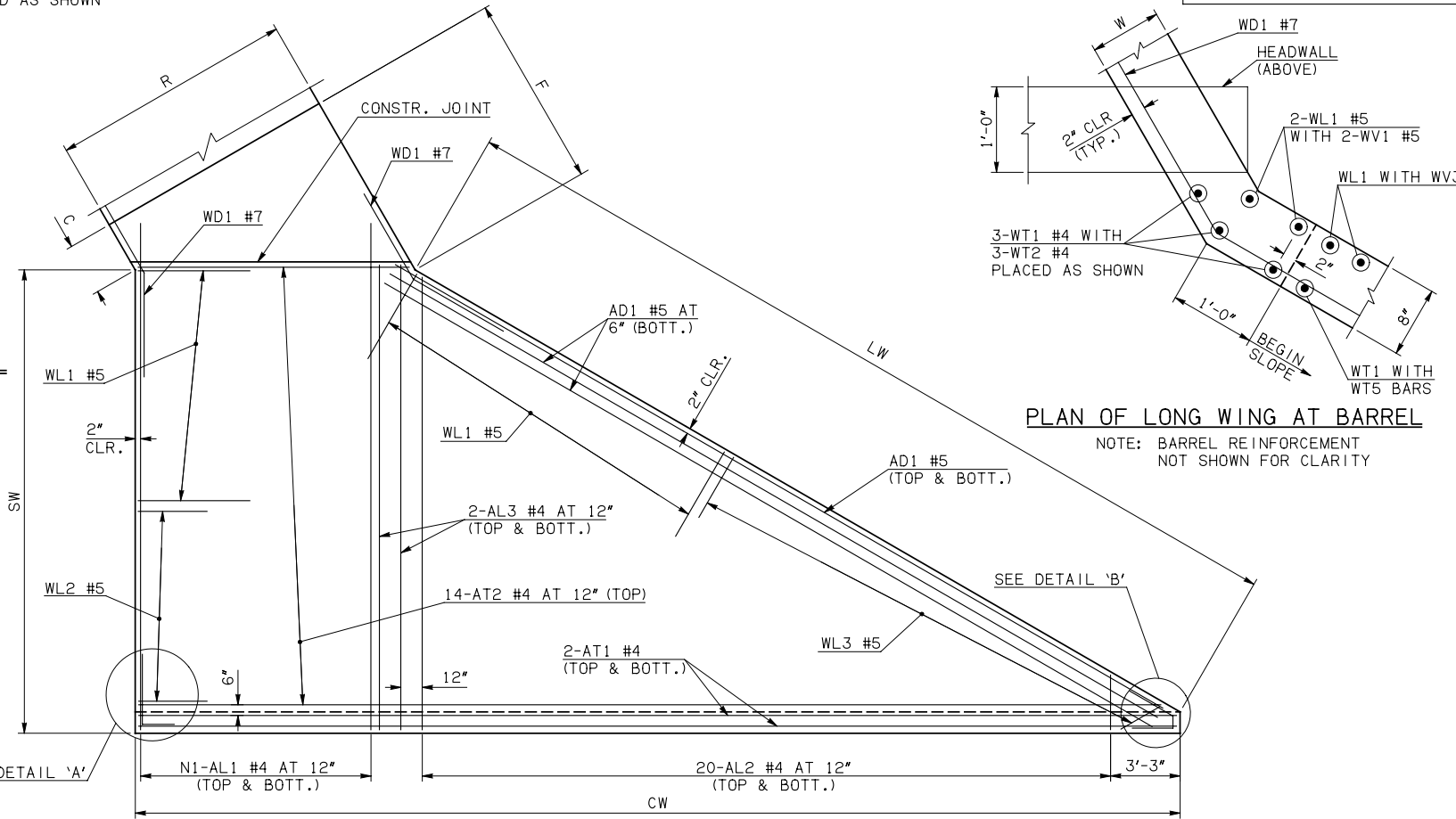


DESCRIPTION	REVISIONS	DATE



PLAN OF SHORT WING AT BARREL
NOTE: BARREL REINFORCEMENT NOT SHOWN FOR CLARITY

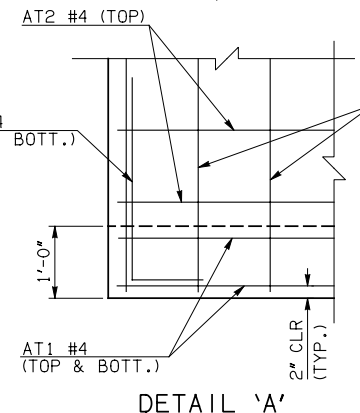


PLAN OF LONG WING AT BARREL
NOTE: BARREL REINFORCEMENT NOT SHOWN FOR CLARITY

END SECTION PLAN

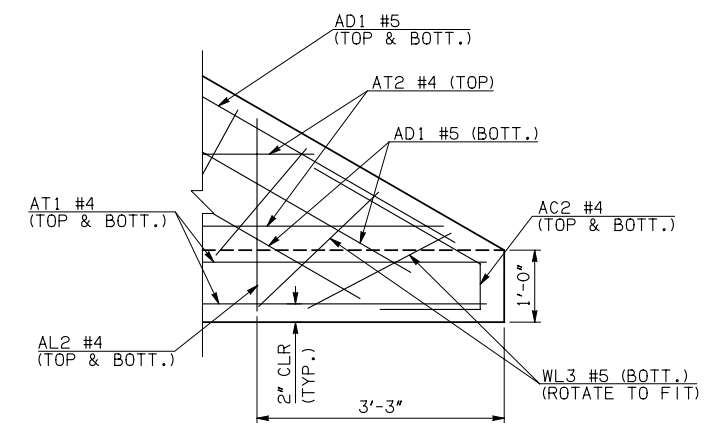
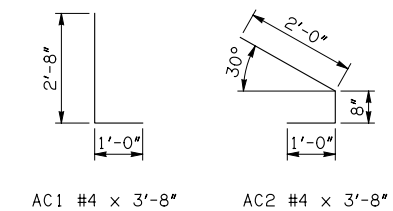
NOTE: SEE END SECTION DETAILS SHEET NO. 2 OF 3 FOR VARIABLE REINFORCING QUANTITIES.

END SECTION VARIABLE DIMENSIONS													
SPAN	W	A	B	C	CW	D	E	F	G	H	LW	R	SW
4'	10"	6'-0"	2'-11 ³ / ₄ "	4'-0 ³ / ₄ "	34'-7"	3'-11 ¹ / ₂ "	9'-0 ¹ / ₄ "	10'-2"	10'-0 ¹ / ₂ "	12'-8 ¹ / ₂ "	25'-11"	10'-6"	13'-11 ³ / ₄ "
5'	10"	6'-0"	2'-4 ³ / ₄ "	3'-5 ³ / ₄ "	36'-10 ³ / ₄ "	3'-4 ¹ / ₂ "	9'-7 ¹ / ₄ "	10'-8 ³ / ₄ "	10'-7 ¹ / ₂ "	15'-0 ¹ / ₄ "	25'-11"	12'-6"	13'-11 ³ / ₄ "
6'	10"	7'-0"	2'-9 ³ / ₄ "	3'-10 ³ / ₄ "	39'-2 ¹ / ₂ "	3'-9 ¹ / ₂ "	11'-2 ¹ / ₄ "	12'-3 ³ / ₄ "	12'-2 ¹ / ₂ "	17'-3 ³ / ₄ "	25'-11"	14'-6"	13'-11 ³ / ₄ "
8'	10"	8'-0"	2'-8"	3'-9"	43'-9 ³ / ₄ "	3'-7 ³ / ₄ "	13'-4"	14'-5 ³ / ₄ "	14'-4 ¹ / ₄ "	21'-11 ¹ / ₄ "	25'-11"	18'-6"	13'-11 ³ / ₄ "
10'	10"	9'-0"	2'-6"	3'-7 ¹ / ₄ "	48'-5 ¹ / ₄ "	3'-5 ³ / ₄ "	15'-6"	16'-7 ¹ / ₂ "	16'-6 ¹ / ₄ "	26'-6 ³ / ₄ "	25'-11"	22'-6"	13'-11 ³ / ₄ "



DETAIL 'A'

APRON REINFORCING



DETAIL 'B'

APRON BAR LIST

APRON BAR LIST																	
ONE APRON SHOWN																	
MARK	SIZE	FORM	4' SPAN			5' SPAN			6' SPAN			8' SPAN			10' SPAN		
			QTY.	LENGTH	REMARKS	QTY.	LENGTH	REMARKS	QTY.	LENGTH	REMARKS	QTY.	LENGTH	REMARKS	QTY.	LENGTH	REMARKS
AC1	#4	BNT	2	3'-8"		2	3'-8"		2	3'-8"		2	3'-8"		2	3'-8"	
AC2	#4	BNT	2	3'-8"		2	3'-8"		2	3'-8"		2	3'-8"		2	3'-8"	
AD1	#5	STR	4	27'-6"		4	27'-6"		4	27'-6"		4	27'-6"		4	27'-6"	
AL1	#4	STR	22	16'-9"		26	16'-9"		30	16'-9"		40	16'-9"		48	16'-9"	
AL2	#4	STR	40	7'-11 ¹ / ₂ " AVG.	2'-6" TO 13'-5"	40	7'-11 ¹ / ₂ " AVG.	2'-6" TO 13'-5"	40	7'-11 ¹ / ₂ " AVG.	2'-6" TO 13'-5"	40	7'-11 ¹ / ₂ " AVG.	2'-6" TO 13'-5"	40	7'-11 ¹ / ₂ " AVG.	2'-6" TO 13'-5"
AL3	#4	STR	4	14'-9"		4	14'-9"		4	14'-9"		4	14'-9"		4	14'-9"	
AT1	#4	STR	4	34'-2"		4	36'-6"		4	38'-10"		4	43'-5"		4	48'-1"	
AT2	#4	STR	14	22'-2 ¹ / ₂ " AVG.	10'-11" TO 33'-6"	14	24'-6" AVG.	13'-3" TO 35'-9"	14	26'-10" AVG.	15'-7" TO 38'-1"	14	31'-5" AVG.	20'-2" TO 42'-8"	14	36'-1" AVG.	24'-10" TO 47'-4"

① QUANTITY SHOWN REPRESENTS TWO SETS.

APPROVED BY BRIDGE ENGINEER *Robert J. Muech* DATE 4/09/09

OKLAHOMA DEPT. OF TRANSPORTATION
BRIDGE STANDARD (ENGLISH)
RCB CULVERTS - END SECTION DETAILS
DOUBLE CELL - 3'-0" HEIGHT - 30°
SHEET NO. 1 OF 3

1999 SPECIFICATIONS RCB-E2-H3-30-1 OOE B-705E