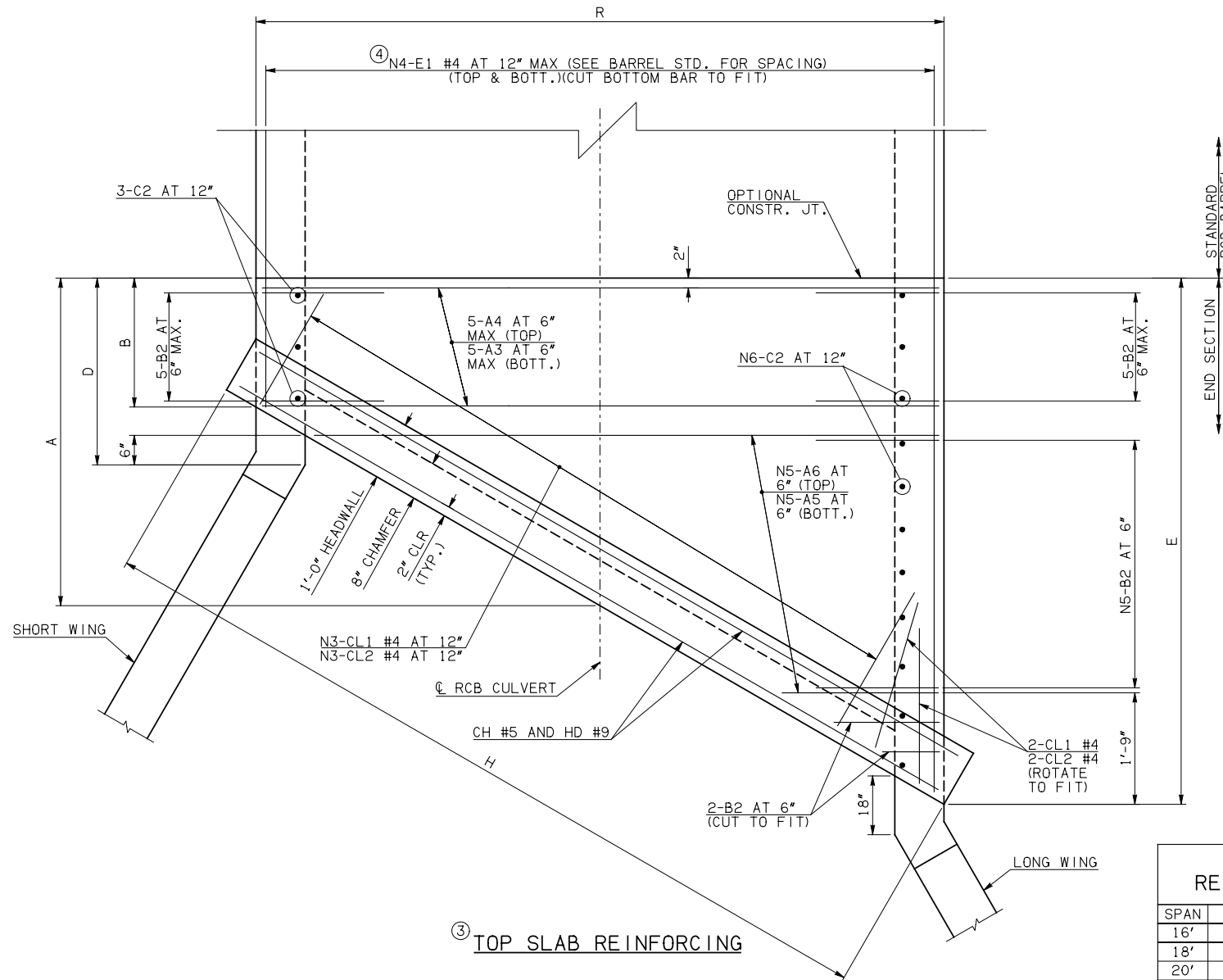
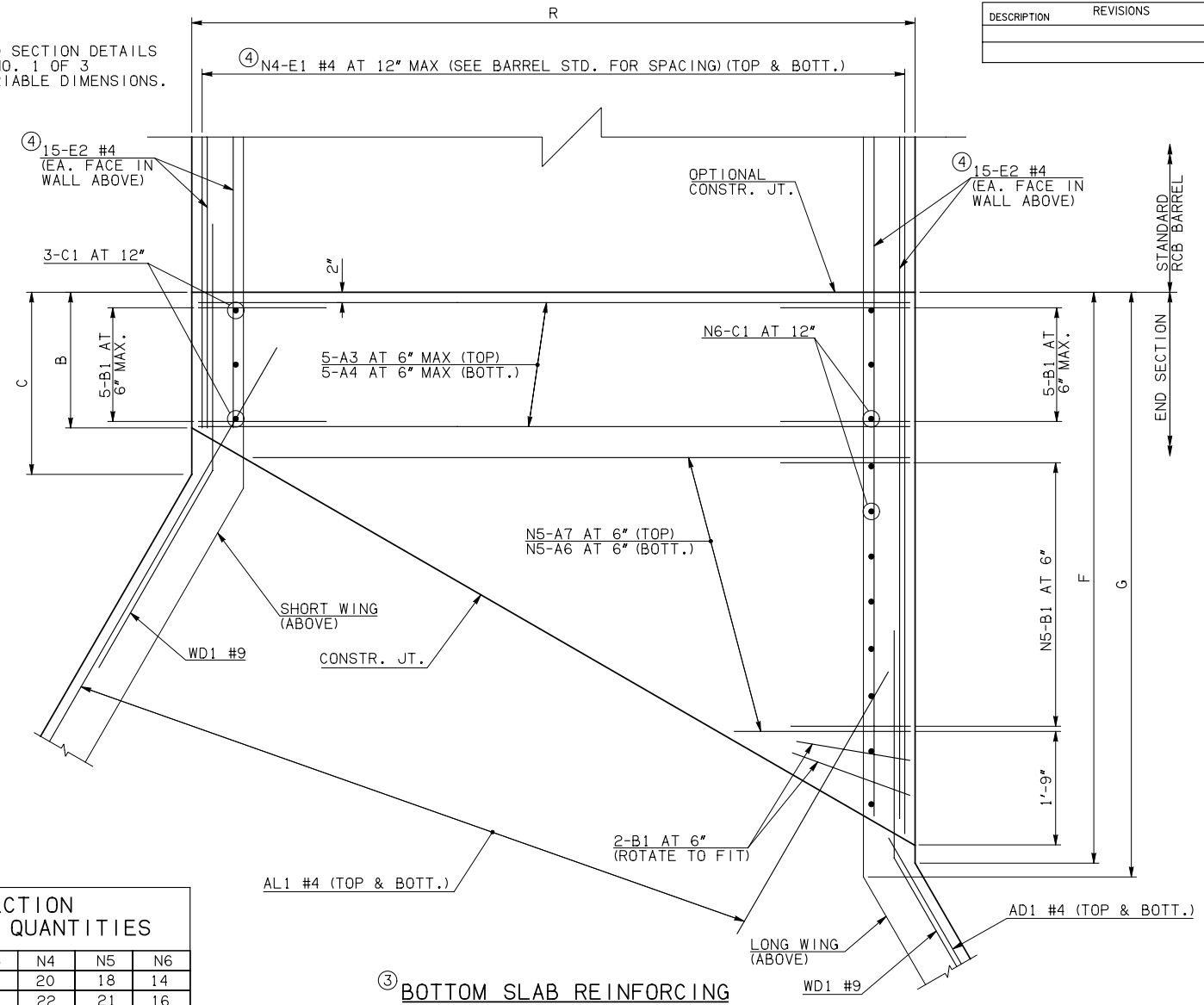


DESCRIPTION	REVISIONS	DATE



NOTE: SEE END SECTION DETAILS SHEET NO. 1 OF 3 FOR VARIABLE DIMENSIONS.



END SECTION REINFORCING QUANTITIES						
SPAN	N1	N2	N3	N4	N5	N6
16'	27	23	20	20	18	14
18'	28	22	22	22	21	16
20'	30	20	24	24	23	17

END CONNECTION BAR LIST

ONE END CONNECTION SHOWN											
MARK	FORM	16' SPAN			18' SPAN			20' SPAN			REMARKS
		SIZE	QTY.	LENGTH	SIZE	QTY.	LENGTH	SIZE	QTY.	LENGTH	
A3	STR	#8	10	18'-4"	#9	10	20'-2"	#9	10	22'-2"	
A4	STR	#6	10	18'-4"	#6	10	20'-2"	#6	10	22'-2"	
A5	STR	#8	18	8'-8 1/2" AVG.	#9	21	10'-0" AVG.	#9	23	10'-10 1/2" AVG.	1'-4" TO 16'-1"
A6	STR	#6	36	9'-10 1/2" AVG.	#6	42	11'-2" AVG.	#6	46	12'-0 1/2" AVG.	2'-6" TO 17'-3"
A7	STR	#8	18	9'-10 1/2" AVG.	#9	21	11'-2" AVG.	#9	23	12'-0 1/2" AVG.	2'-6" TO 17'-3"
B1	BNT	#7	30	7'-7"	#8	33	8'-6"	#8	35	8'-8"	
B2	BNT	#7	30	19'-9"	#8	33	19'-9"	#8	35	19'-11"	
C1	STR	#6	17	3'-4"	#6	19	3'-4"	#6	20	3'-5"	
C2	STR	#6	17	16'-3"	#6	19	16'-3"	#6	20	16'-4"	
E1	STR	#4	80	7'-9 1/2" AVG.	#4	88	7'-9" AVG.	#4	96	8'-9" AVG.	1'-11" TO 13'-7"
E2	STR	#4	60	7'-6" AVG.	#4	60	7'-6" AVG.	#4	60	8'-6" AVG.	1'-11" AND 13'-1"

QUANTITIES

ITEM	UNIT	16' SPAN	18' SPAN	20' SPAN
CLASS AA CONCRETE	CY	254.00	260.60	273.20
REINFORCING STEEL	LB	32800.00	35110.00	36370.00

NOTE: QUANTITIES ABOVE ARE FOR ONE END SECTION, WHICH IS COMPRISED OF ONE END CONNECTION, ONE HEADWALL, ONE APRON, AND TWO WINGWALLS.

NOTES: ② QUANTITY SHOWN REPRESENTS TWO SETS.

③ FOR FURTHER INFORMATION REGARDING END SECTION BARS A, B, C, E1, AND E2, REFER TO RCB CULVERT - BARREL DETAILS.

④ LENGTHS OF E1 & E2 BARS SHOWN ARE ADDITIONAL LENGTHS REQUIRED FOR THE END SECTION. LAP SPLICES, AS REQUIRED, SHALL BE IN ACCORDANCE WITH RCB BARREL STANDARD NOTES.

⑤ 4-SETS OF N4-E1 BARS REQUIRED.

⑥ 2-SETS OF 30-E2 BARS REQUIRED WITH LENGTHS AS SHOWN CORRESPONDING TO SHORT EXTERIOR WALL AND LONG EXTERIOR WALL.

APPROVED BY BRIDGE ENGINEER *Robert J. Nussler* DATE 4/09/09

OKLAHOMA DEPT. OF TRANSPORTATION
BRIDGE STANDARD (ENGLISH)
RCB CULVERTS - END SECTION DETAILS
SINGLE CELL - 15'-0" HEIGHT - 30"
SHEET NO. 2 OF 3