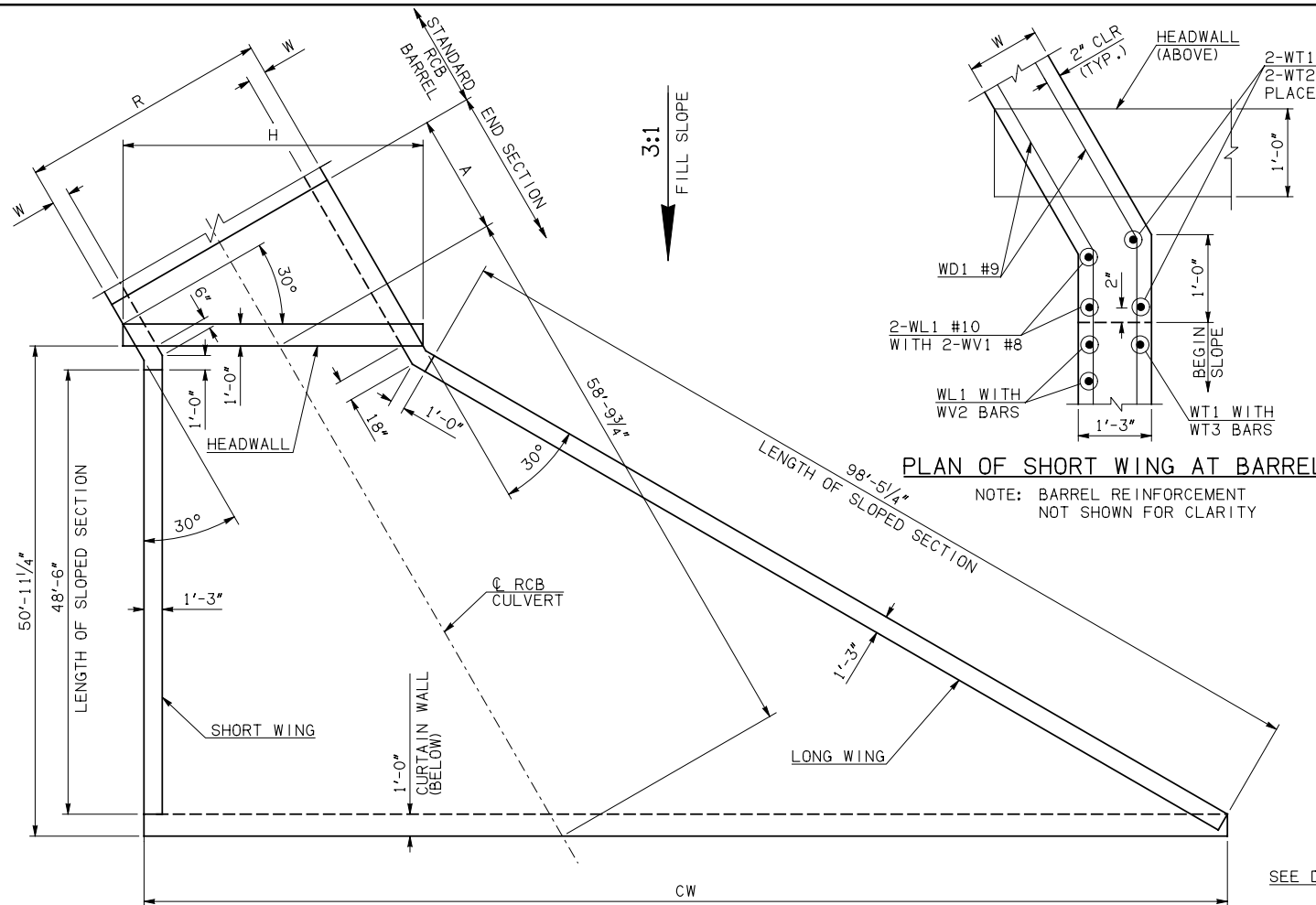


DESCRIPTION	REVISIONS	DATE



END SECTION PLAN

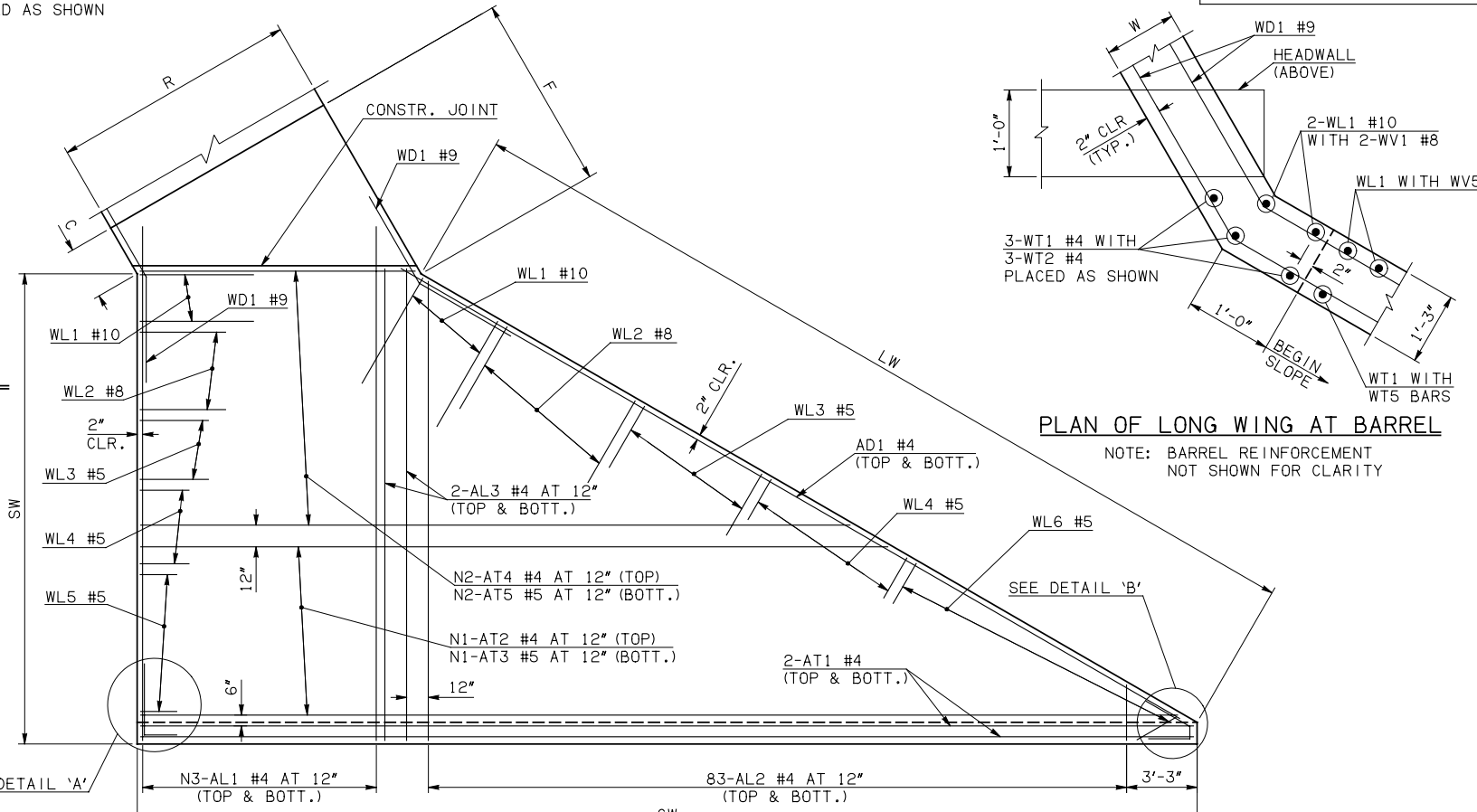
NOTE: SEE END SECTION DETAILS SHEET NO. 2 OF 3 FOR VARIABLE REINFORCING QUANTITIES.

END SECTION VARIABLE DIMENSIONS

SPAN	W	A	B	C	CW	D	E	F	G	H	LW	R	SW
16'	16"	8'-0"	2'-7 ¹ / ₄ "	3'-8 ¹ / ₄ "	106'-11 ¹ / ₂ "	3'-10 ¹ / ₂ "	13'-4 ³ / ₄ "	13'-11 ¹ / ₄ "	14'-1 ¹ / ₂ "	22'-1 ¹ / ₂ "	98'-11 ¹ / ₄ "	18'-8"	50'-0"
18'	15"	8'-0"	2'-1"	2'-11 ³ / ₄ "	109'-3 ¹ / ₄ "	3'-3 ³ / ₄ "	13'-11"	14'-4 ¹ / ₄ "	14'-8 ¹ / ₄ "	24'-3"	99'-1 ¹ / ₄ "	20'-6"	50'-2"
20'	15"	9'-0"	2'-6"	3'-4 ³ / ₄ "	111'-7"	3'-8 ³ / ₄ "	15'-6"	15'-11 ¹ / ₄ "	16'-3 ¹ / ₄ "	26'-6 ³ / ₄ "	99'-1 ¹ / ₄ "	22'-6"	50'-2"

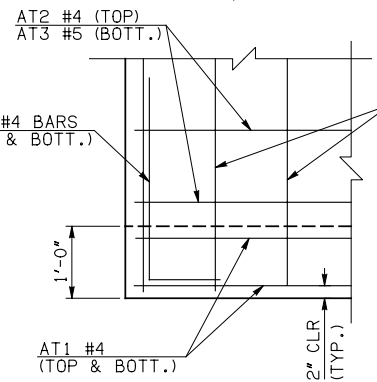
PLAN OF SHORT WING AT BARREL

NOTE: BARREL REINFORCEMENT NOT SHOWN FOR CLARITY



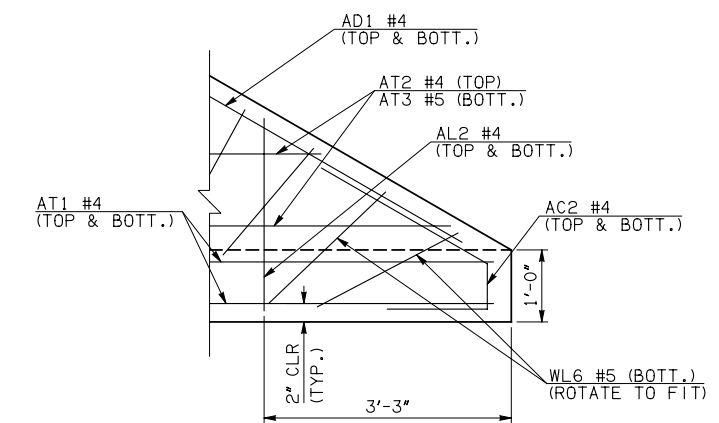
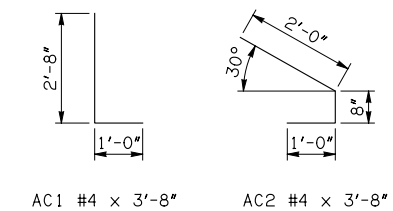
PLAN OF LONG WING AT BARREL

NOTE: BARREL REINFORCEMENT NOT SHOWN FOR CLARITY



DETAIL 'A'

APRON REINFORCING



DETAIL 'B'

- ① INCLUDES 2'-6" LAP
- ② QUANTITY SHOWN REPRESENTS TWO SETS.

APRON AND HEADWALL BAR LIST

MARK	SIZE	FORM	16' SPAN			18' SPAN			20' SPAN		
			QTY.	LENGTH	REMARKS	QTY.	LENGTH	REMARKS	QTY.	LENGTH	REMARKS
	AC1	#4 BNT	2	3'-8"		2	3'-8"		2	3'-8"	
	AC2	#4 BNT	2	3'-8"		2	3'-8"		2	3'-8"	
①	AD1	#4 STR	2	102'-0"		2	102'-0"		2	102'-0"	
	AL1	#4 STR	40	52'-9"		44	52'-9"		48	52'-9"	
②	AL2	#4 STR	166	26'-2" AVG.	2'-6" TO 49'-10"	166	26'-2" AVG.	2'-6" TO 49'-10"	166	26'-2" AVG.	2'-6" TO 49'-10"
	AL3	#4 STR	4	50'-9"		4	50'-9"		4	50'-9"	
①	AT1	#4 STR	4	109'-1"		4	111'-5"		4	113'-8"	
①	AT2	#4 STR	27	85'-10" AVG.	63'-4" TO 108'-4"	28	87'-3 ¹ / ₂ " AVG.	63'-11" TO 110'-8"	30	87'-10 ¹ / ₂ " AVG.	62'-9" TO 113'-0"
①	AT3	#5 STR	27	85'-10" AVG.	63'-4" TO 108'-4"	28	87'-3 ¹ / ₂ " AVG.	63'-11" TO 110'-8"	30	87'-10 ¹ / ₂ " AVG.	62'-9" TO 113'-0"
	AT4	#4 STR	23	40'-0 ¹ / ₂ " AVG.	21'-0" TO 59'-1"	22	41'-5 ¹ / ₂ " AVG.	23'-3" TO 59'-8"	20	42'-0 ¹ / ₂ " AVG.	25'-7" TO 58'-6"
	AT5	#5 STR	23	40'-0 ¹ / ₂ " AVG.	21'-0" TO 59'-1"	22	41'-5 ¹ / ₂ " AVG.	23'-3" TO 59'-8"	20	42'-0 ¹ / ₂ " AVG.	25'-7" TO 58'-6"
	CH	#5 STR	4	21'-9"		4	23'-10"		4	26'-2"	
	CL1	#4 BNT	22	4'-4"		24	4'-4"		26	4'-4"	
	CL2	#4 BNT	22	4'-3"		24	4'-3"		26	4'-3"	
	HD	#9 STR	2	21'-9"		2	23'-10"		2	26'-2"	

APPROVED BY BRIDGE ENGINEER *Robert J. Nusch* DATE 4/09/09

OKLAHOMA DEPT. OF TRANSPORTATION
BRIDGE STANDARD (ENGLISH)
 RCB CULVERTS - END SECTION DETAILS
 SINGLE CELL - 15'-0" HEIGHT - 30°
 SHEET NO. 1 OF 3

1999 SPECIFICATIONS | RCB-E1-H15-30-1 | OOE | B-693E