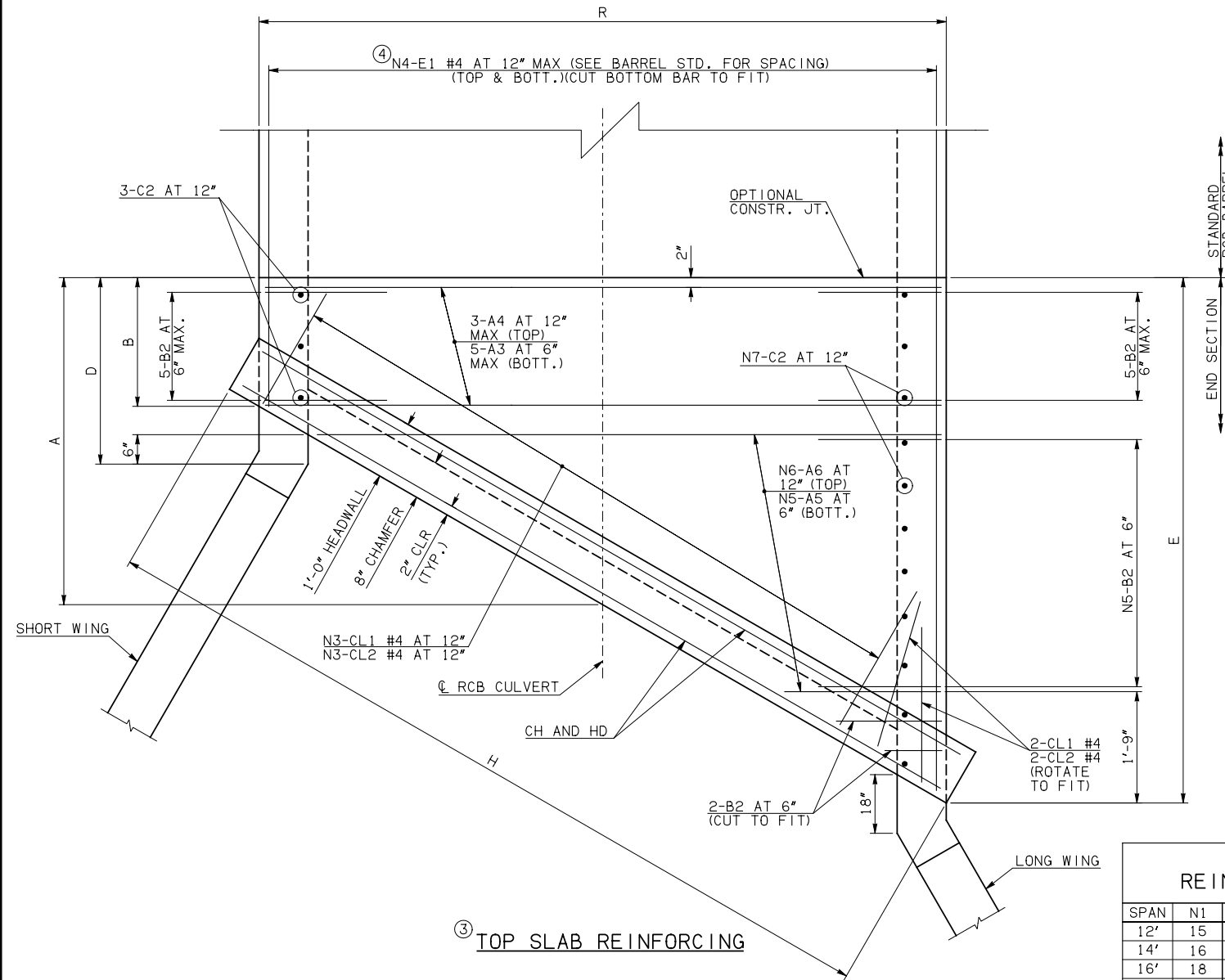
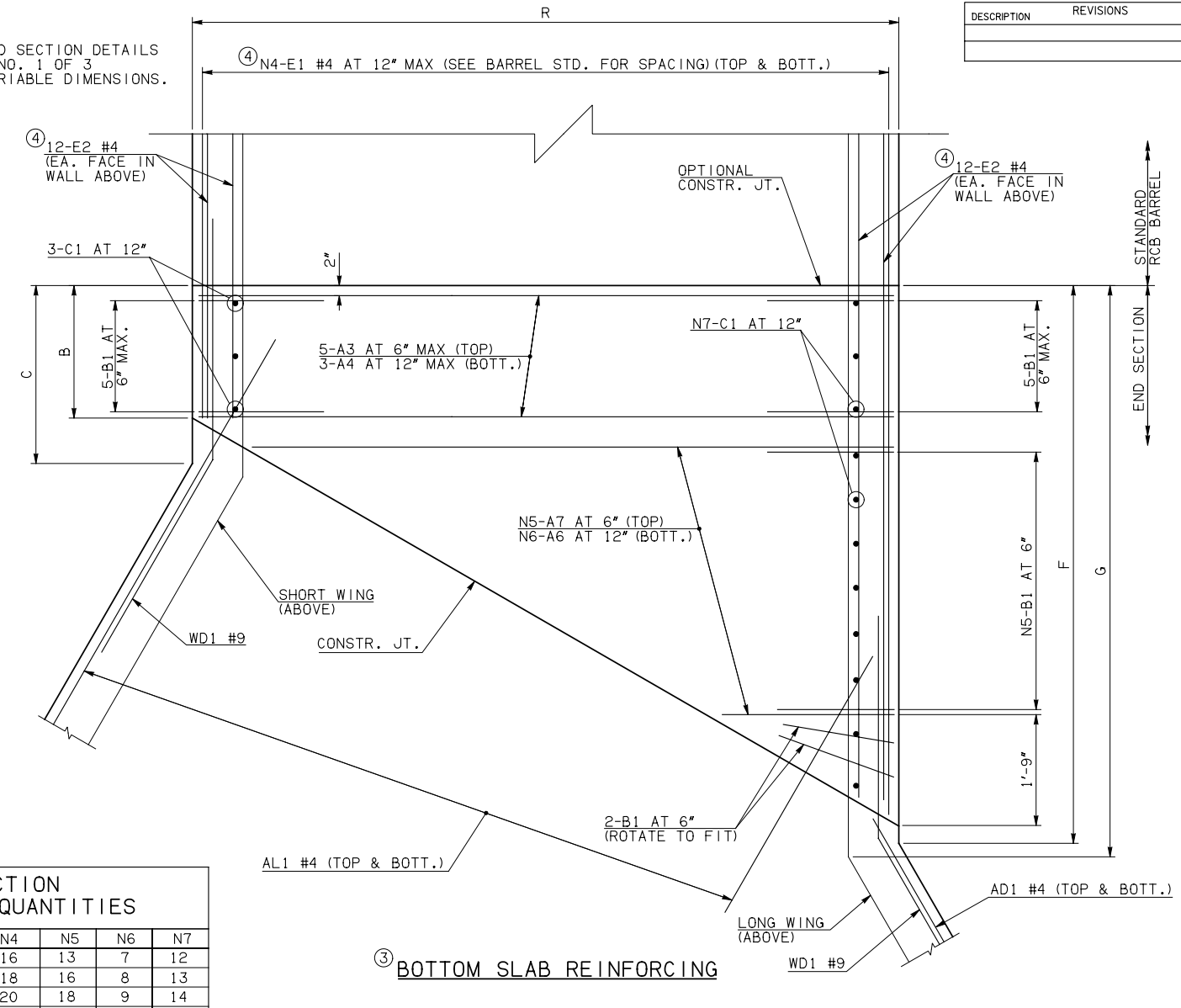


DESCRIPTION	REVISIONS	DATE



NOTE: SEE END SECTION DETAILS SHEET NO. 1 OF 3 FOR VARIABLE DIMENSIONS.



SPAN	N1	N2	N3	N4	N5	N6	N7
12'	15	26	15	16	13	7	12
14'	16	25	17	18	16	8	13
16'	18	23	20	20	18	9	14
18'	19	22	22	22	21	11	16
20'	20	21	24	24	23	12	17

END CONNECTION BAR LIST

ONE END CONNECTION SHOWN

MARK	FORM	12' SPAN				14' SPAN				16' SPAN				18' SPAN				20' SPAN			
		SIZE	QTY.	LENGTH	REMARKS	SIZE	QTY.	LENGTH	REMARKS	SIZE	QTY.	LENGTH	REMARKS	SIZE	QTY.	LENGTH	REMARKS	SIZE	QTY.	LENGTH	REMARKS
A3	STR	#7	10	13'-8"		#7	10	15'-10"		#8	10	18'-4"		#9	10	20'-2"		#9	10	22'-2"	
A4	STR	#4	6	13'-8"		#4	6	15'-10"		#5	6	18'-4"		#5	6	20'-2"		#5	6	22'-2"	
A5	STR	#7	13	6'-6 1/2" AVG.	1'-4" TO 11'-9"	#7	16	7'-10" AVG.	1'-4" TO 14'-4"	#8	18	8'-8 1/2" AVG.	1'-4" TO 16'-1"	#9	21	10'-0" AVG.	1'-4" TO 18'-8"	#9	23	10'-10 1/2" AVG.	1'-4" TO 20'-5"
A6	STR	#4	14	7'-8 1/2" AVG.	2'-6" TO 12'-11"	#4	16	8'-6 1/2" AVG.	2'-6" TO 14'-7"	#5	18	9'-5" AVG.	2'-6" TO 16'-4"	#5	22	11'-2" AVG.	2'-6" TO 19'-10"	#5	24	12'-0 1/2" AVG.	2'-6" TO 21'-7"
A7	STR	#7	13	7'-8 1/2" AVG.	2'-6" TO 12'-11"	#7	16	9'-0" AVG.	2'-6" TO 15'-6"	#8	18	9'-10 1/2" AVG.	2'-6" TO 17'-3"	#9	21	11'-2" AVG.	2'-6" TO 19'-10"	#9	23	12'-0 1/2" AVG.	2'-6" TO 21'-7"
B1	BNT	#7	25	6'-11"		#7	28	7'-6"		#6	30	6'-9"		#7	33	7'-7"		#8	35	7'-11"	
B2	BNT	#7	25	16'-5"		#7	28	16'-8"		#6	30	16'-8"		#7	33	16'-9"		#8	35	16'-8"	
C1	STR	#6	15	2'-11"		#5	16	2'-8"		#5	17	2'-11"		#5	19	2'-11"		#4	20	2'-8"	
C2	STR	#6	15	12'-11"		#5	16	13'-0"		#5	17	13'-3"		#5	19	13'-3"		#4	20	13'-4"	
E1	STR	#4	64	6'-9 1/2" AVG.	2'-10" TO 10'-9"	#4	72	6'-9" AVG.	2'-2" TO 11'-4"	#4	80	7'-9 1/2" AVG.	2'-6" TO 13'-1"	#4	88	7'-9" AVG.	1'-11" TO 13'-7"	#4	96	8'-9" AVG.	2'-4" TO 15'-2"
E2	STR	#4	48	6'-7" AVG.	2'-10" AND 10'-4"	#4	48	6'-6 1/2" AVG.	2'-2" AND 10'-11"	#4	48	7'-6" AVG.	2'-6" AND 12'-6"	#4	48	7'-6" AVG.	1'-11" AND 13'-1"	#4	48	8'-6" AVG.	2'-4" AND 14'-8"

ITEM	UNIT	12' SPAN	14' SPAN	16' SPAN	18' SPAN	20' SPAN
CLASS AA CONCRETE	CY	142.60	149.40	162.60	167.70	178.40
REINFORCING STEEL	LB	20190.00	20880.00	21810.00	23690.00	25110.00

NOTE: QUANTITIES ABOVE ARE FOR ONE END SECTION, WHICH IS COMPRISED OF ONE END CONNECTION, ONE HEADWALL, ONE APRON, AND TWO WINGWALLS.

- NOTES: ② QUANTITY SHOWN REPRESENTS TWO SETS.
- ③ FOR FURTHER INFORMATION REGARDING END SECTION BARS A, B, C, E1, AND E2, REFER TO RCB CULVERT - BARREL DETAILS.
- ④ LENGTHS OF E1 & E2 BARS SHOWN ARE ADDITIONAL LENGTHS REQUIRED FOR THE END SECTION. LAP SPLICES, AS REQUIRED, SHALL BE IN ACCORDANCE WITH RCB BARREL STANDARD NOTES.
- ⑤ 4-SETS OF N4-E1 BARS REQUIRED.
- ⑥ 2-SETS OF 24-E2 BARS REQUIRED WITH LENGTHS AS SHOWN CORRESPONDING TO SHORT EXTERIOR WALL AND LONG EXTERIOR WALL.

APPROVED BY BRIDGE ENGINEER *Debra J. Nisch* DATE 4/09/09

OKLAHOMA DEPT. OF TRANSPORTATION
BRIDGE STANDARD (ENGLISH)
 RCB CULVERTS - END SECTION DETAILS
 SINGLE CELL - 12'-0" HEIGHT - 30°
 SHEET NO. 2 OF 3

1999 SPECIFICATIONS | RCB-E1-H12-30-2 | OOE | B-691E