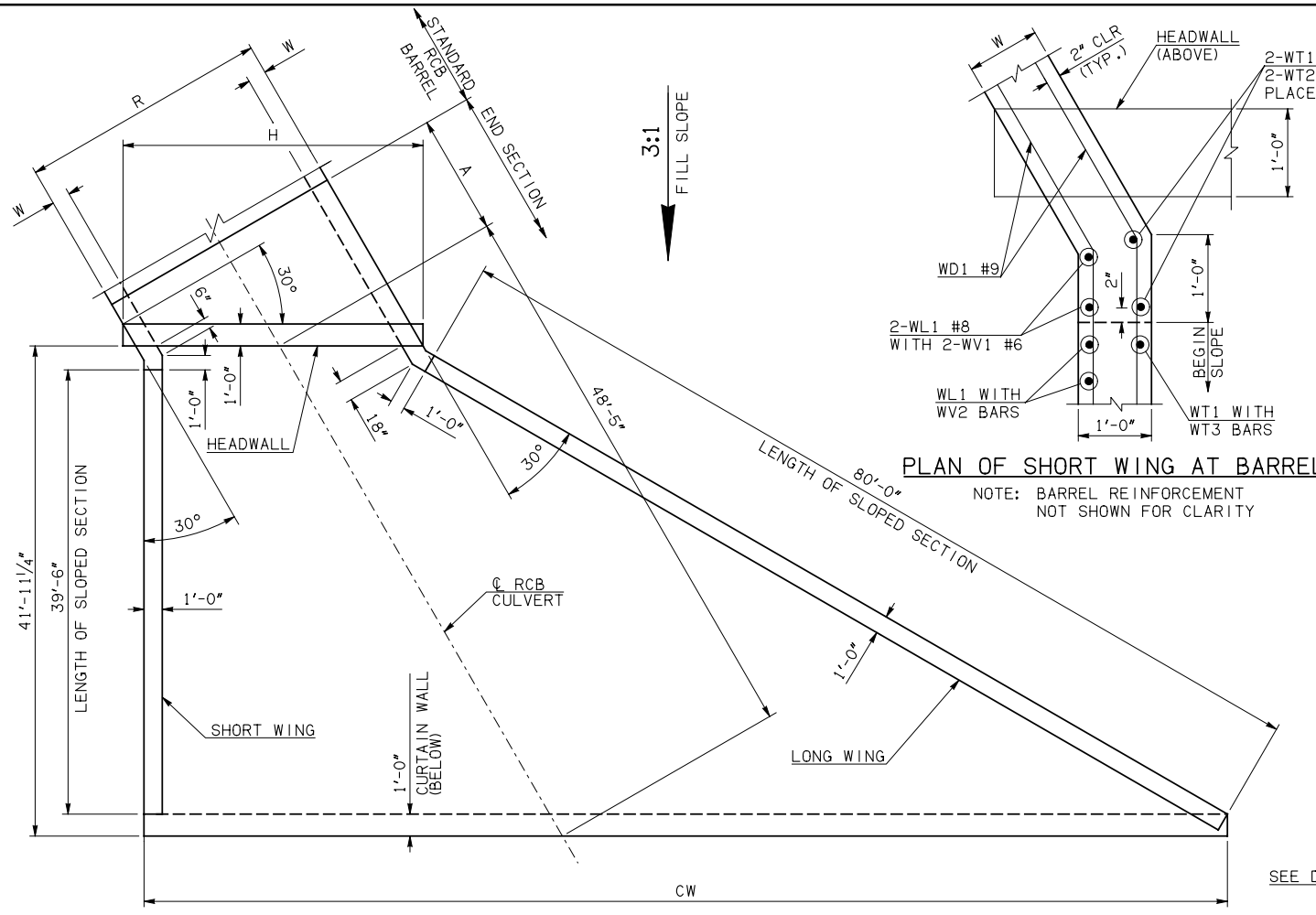


DESCRIPTION	REVISIONS	DATE



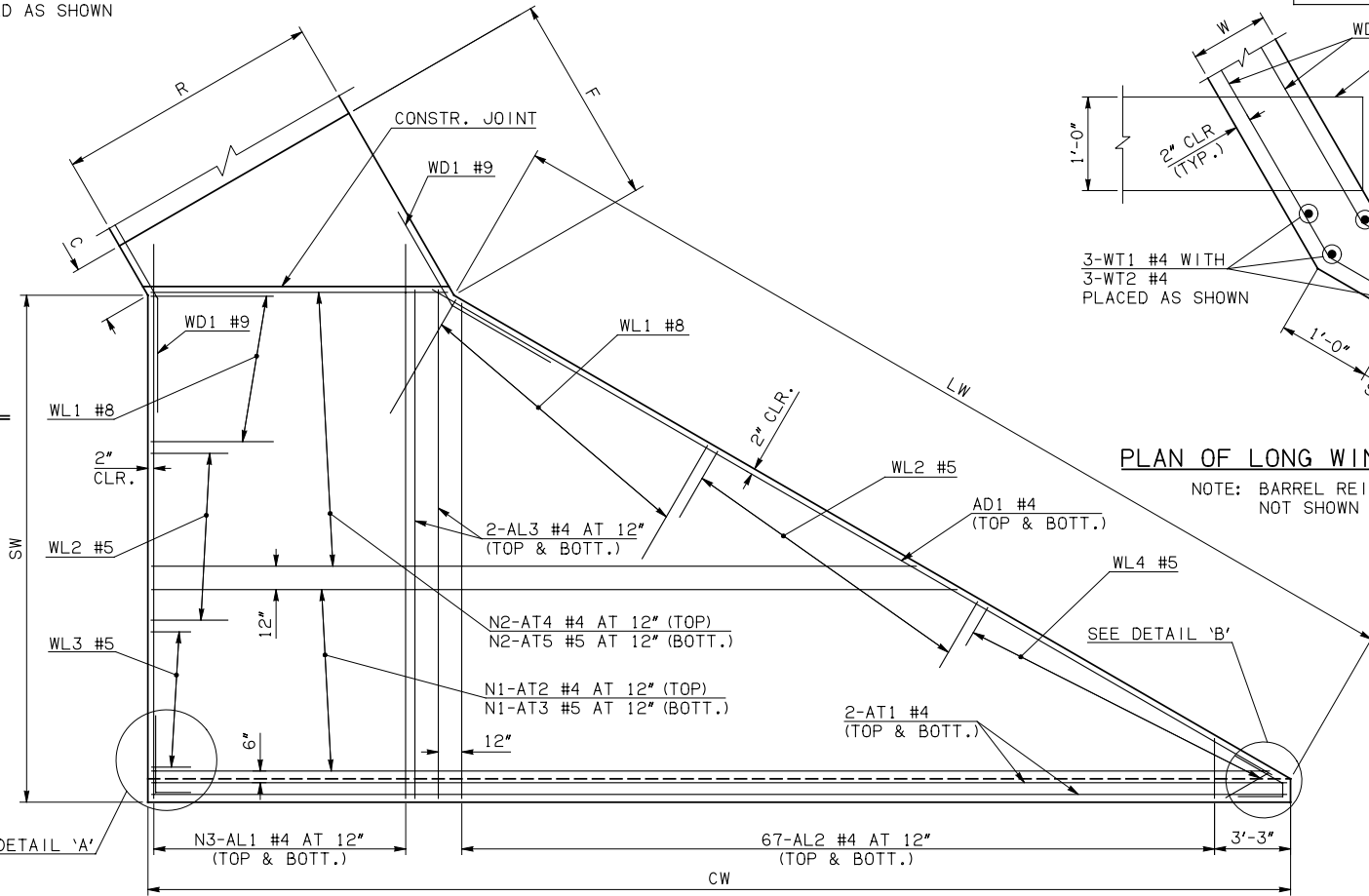
END SECTION PLAN

NOTE: SEE END SECTION DETAILS SHEET NO. 2 OF 3 FOR VARIABLE REINFORCING QUANTITIES.

END SECTION VARIABLE DIMENSIONS													
SPAN	W	A	B	C	CW	D	E	F	G	H	LW	R	SW
12'	12"	7'-0"	2'-11 1/2"	3'-9 1/4"	86'-0"	4'-0 1/2"	11'-0 1/2"	11'-8 1/4"	11'-11 1/2"	16'-9"	80'-8 3/4"	14'-0"	41'-2 3/4"
14'	13"	7'-0"	2'-4"	3'-4"	88'-3 3/4"	3'-5 1/2"	11'-8"	12'-5"	12'-6 1/2"	19'-3"	80'-6 3/4"	16'-2"	41'-0 3/4"
16'	16"	8'-0"	2'-7 1/4"	4'-2 1/4"	90'-7 1/2"	3'-10 1/2"	13'-4 3/4"	14'-5 1/4"	14'-1 1/2"	22'-1 1/2"	80'-0 3/4"	18'-8"	40'-6 3/4"
18'	15"	8'-0"	2'-1"	3'-5 3/4"	92'-11 1/4"	3'-3 3/4"	13'-11"	14'-10 1/4"	14'-8 1/4"	24'-3"	80'-2 3/4"	20'-6"	40'-8 3/4"
20'	15"	9'-0"	2'-6"	3'-10 3/4"	95'-3"	3'-8 3/4"	15'-6"	16'-5 1/4"	16'-3 1/4"	26'-6 3/4"	80'-2 3/4"	22'-6"	40'-8 3/4"

PLAN OF SHORT WING AT BARREL

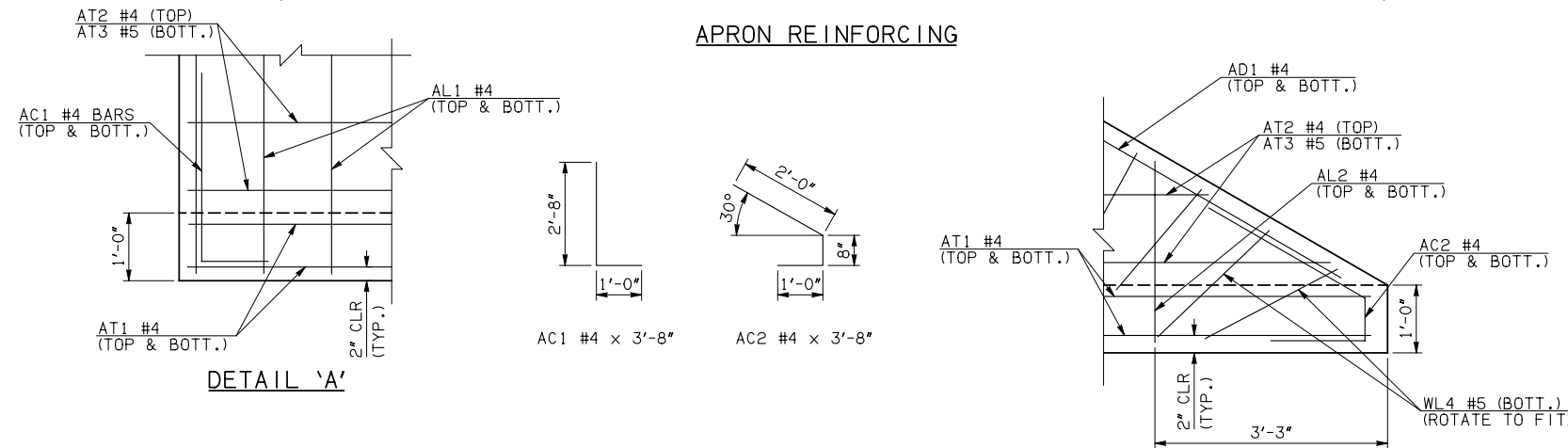
NOTE: BARREL REINFORCEMENT NOT SHOWN FOR CLARITY



PLAN OF LONG WING AT BARREL

NOTE: BARREL REINFORCEMENT NOT SHOWN FOR CLARITY

APRON REINFORCING



APRON BAR LIST

ONE APRON SHOWN

MARK	SIZE	FORM	12' SPAN			14' SPAN			16' SPAN			18' SPAN			20' SPAN			
			QTY.	LENGTH	REMARKS	QTY.	LENGTH	REMARKS	QTY.	LENGTH	REMARKS	QTY.	LENGTH	REMARKS	QTY.	LENGTH	REMARKS	
	AC1	#4	BNT	2	3'-8"		2	3'-8"		2	3'-8"		2	3'-8"		2	3'-8"	
	AC2	#4	BNT	2	3'-8"		2	3'-8"		2	3'-8"		2	3'-8"		2	3'-8"	
①	AD1	#4	STR	2	84'-0"		2	84'-0"		2	84'-0"		2	84'-0"		2	84'-0"	
	AL1	#4	STR	30	43'-9"		34	43'-9"		40	43'-9"		44	43'-9"		48	43'-9"	
②	AL2	#4	STR	134	21'-6 1/2" AVG.	2'-6" TO 40'-7"	134	21'-6 1/2" AVG.	2'-6" TO 40'-7"	134	21'-6 1/2" AVG.	2'-6" TO 40'-7"	134	21'-6 1/2" AVG.	2'-6" TO 40'-7"	134	21'-6 1/2" AVG.	2'-6" TO 40'-7"
	AL3	#4	STR	4	41'-9"		4	41'-9"		4	41'-9"		4	41'-9"		4	41'-9"	
①	AT1	#4	STR	4	88'-2"		4	90'-5"		4	92'-9"		4	95'-1"		4	97'-4"	
①	AT2	#4	STR	15	75'-3 1/2" AVG.	63'-2" TO 87'-5"	16	76'-8 1/2" AVG.	63'-9" TO 89'-8"	18	77'-3 1/2" AVG.	62'-7" TO 92'-0"	19	78'-9" AVG.	63'-2" TO 94'-4"	20	80'-2" AVG.	63'-9" TO 96'-7"
①	AT3	#5	STR	15	75'-3 1/2" AVG.	63'-2" TO 87'-5"	16	76'-8 1/2" AVG.	63'-9" TO 89'-8"	18	77'-3 1/2" AVG.	62'-7" TO 92'-0"	19	78'-9" AVG.	63'-2" TO 94'-4"	20	80'-2" AVG.	63'-9" TO 96'-7"
	AT4	#4	STR	26	37'-3" AVG.	15'-7" TO 58'-11"	25	38'-8 1/2" AVG.	17'-11" TO 59'-6"	23	39'-3 1/2" AVG.	20'-3" TO 58'-4"	22	40'-8 1/2" AVG.	22'-6" TO 58'-11"	21	42'-2" AVG.	24'-10" TO 59'-6"
	AT5	#5	STR	26	37'-3" AVG.	15'-7" TO 58'-11"	25	38'-8 1/2" AVG.	17'-11" TO 59'-6"	23	39'-3 1/2" AVG.	20'-3" TO 58'-4"	22	40'-8 1/2" AVG.	22'-6" TO 58'-11"	21	42'-2" AVG.	24'-10" TO 59'-6"

- ① INCLUDES 2'-6" LAP
- ② QUANTITY SHOWN REPRESENTS TWO SETS

APPROVED BY BRIDGE ENGINEER *Robert J. Nisch* DATE 4/09/09

OKLAHOMA DEPT. OF TRANSPORTATION
BRIDGE STANDARD (ENGLISH)
RCB CULVERTS - END SECTION DETAILS
SINGLE CELL - 12'-0" HEIGHT - 30°
 SHEET NO. 1 OF 3

1999 SPECIFICATIONS | RCB-E1-H12-30-1 | OOE | B-690E