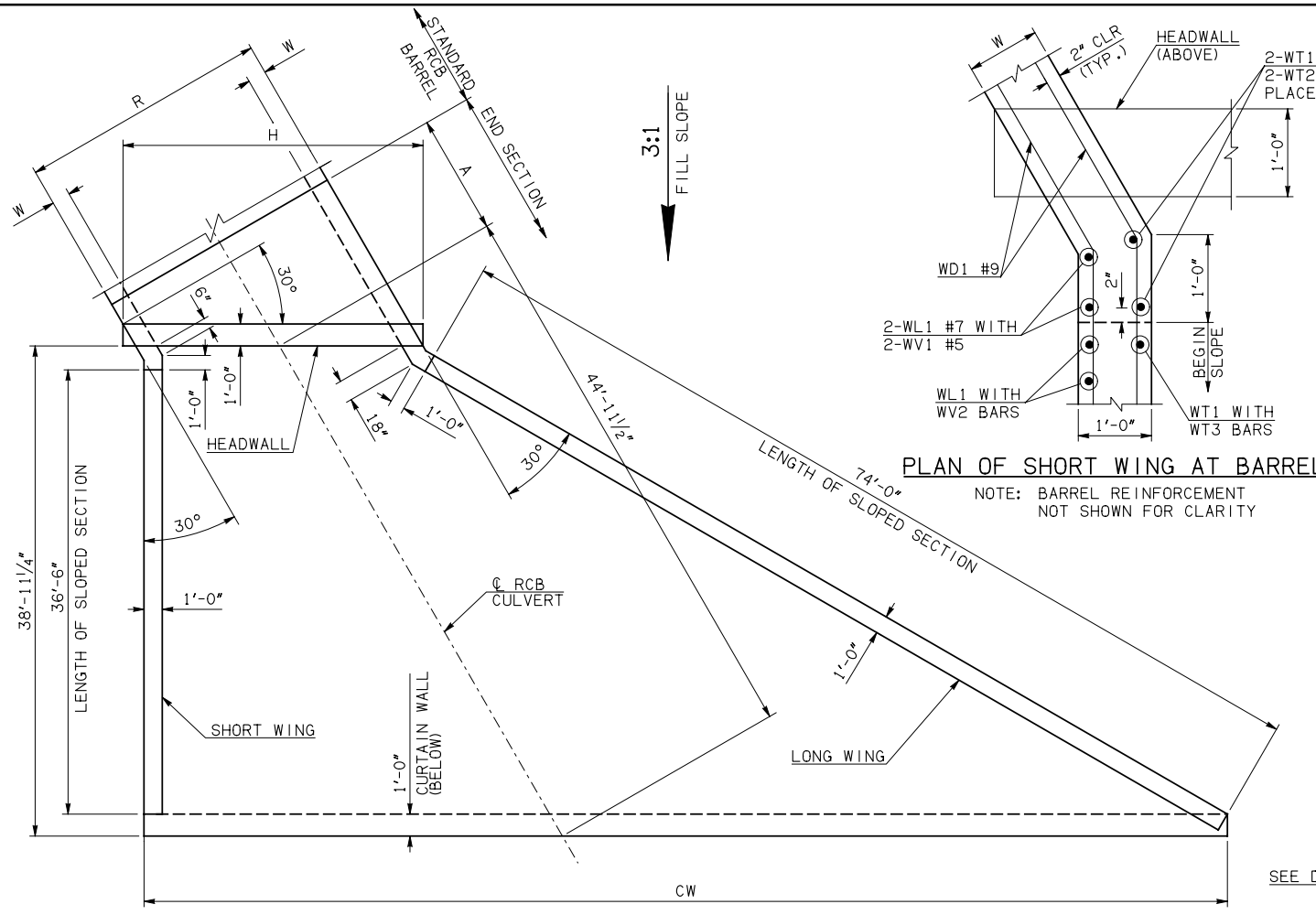
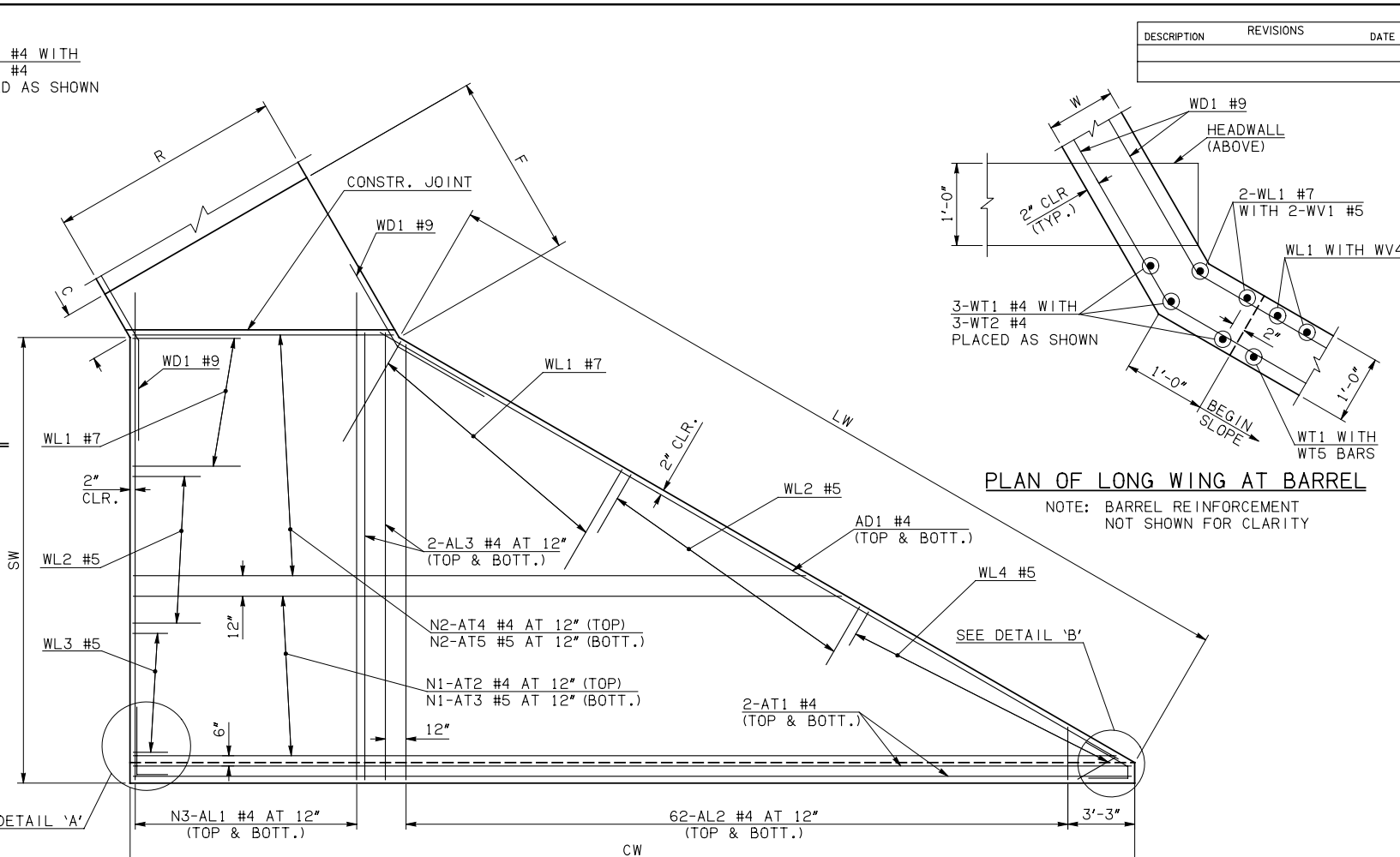


DESCRIPTION	REVISIONS	DATE



PLAN OF SHORT WING AT BARREL
NOTE: BARREL REINFORCEMENT NOT SHOWN FOR CLARITY

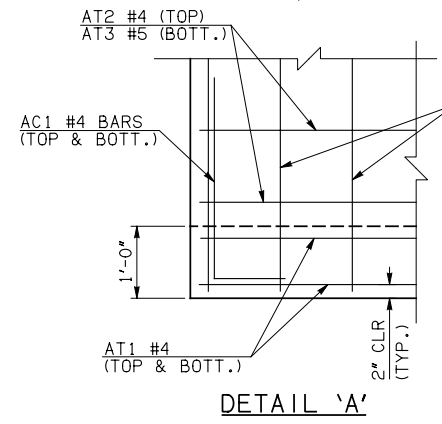


PLAN OF LONG WING AT BARREL
NOTE: BARREL REINFORCEMENT NOT SHOWN FOR CLARITY

END SECTION PLAN

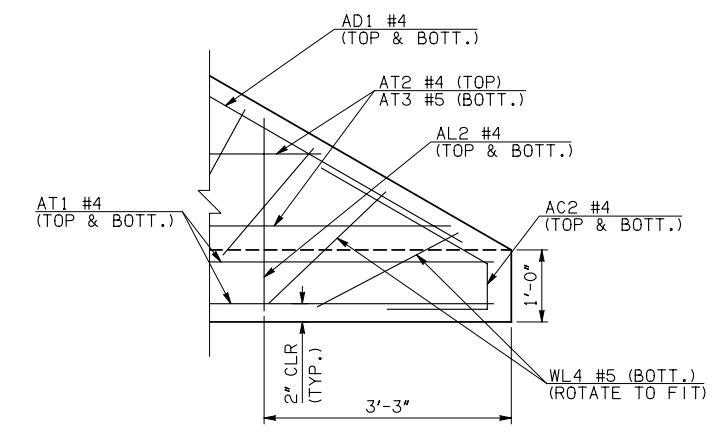
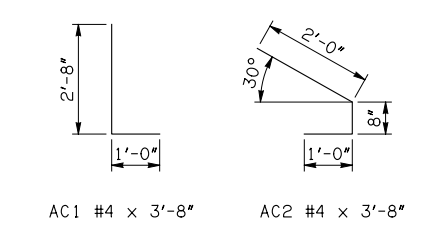
NOTE: SEE END SECTION DETAILS SHEET NO. 2 OF 3 FOR VARIABLE REINFORCING QUANTITIES.

END SECTION VARIABLE DIMENSIONS													
SPAN	W	A	B	C	CW	D	E	F	G	H	LW	R	SW
12'	12"	7'-0"	2'-11 1/2"	3'-9 3/4"	80'-9 3/4"	4'-0 1/2"	11'-0 1/2"	11'-8 1/4"	11'-11 1/2"	16'-9"	74'-8 3/4"	14'-0"	38'-2 3/4"
14'	13"	7'-0"	2'-4"	3'-4"	83'-1 1/2"	3'-5 1/2"	11'-8"	12'-5"	12'-6 1/2"	19'-3"	74'-6 3/4"	16'-2"	38'-0 3/4"
16'	14"	8'-0"	2'-8 1/2"	3'-10 3/4"	85'-5 1/4"	3'-10 1/2"	13'-3 1/2"	14'-1 3/4"	14'-1 1/2"	21'-9"	74'-4 3/4"	18'-4"	37'-10 3/4"
18'	15"	8'-0"	2'-1"	3'-5 3/4"	87'-8 3/4"	3'-3 3/4"	13'-11"	14'-10 1/4"	14'-8 1/4"	24'-3"	74'-2 3/4"	20'-6"	37'-8 3/4"
20'	15"	9'-0"	2'-6"	3'-10 3/4"	90'-0 1/2"	3'-8 3/4"	15'-6"	16'-5 1/4"	16'-3 1/4"	26'-6 3/4"	74'-2 3/4"	22'-6"	37'-8 3/4"



DETAIL 'A'

APRON REINFORCING



DETAIL 'B'

APRON BAR LIST

MARK	SIZE	FORM	ONE APRON SHOWN																			
			12' SPAN				14' SPAN				16' SPAN				18' SPAN				20' SPAN			
			QTY.	LENGTH	REMARKS	QTY.	LENGTH	REMARKS	QTY.	LENGTH	REMARKS	QTY.	LENGTH	REMARKS	QTY.	LENGTH	REMARKS					
AC1	#4	BNT	2	3'-8"		2	3'-8"		2	3'-8"		2	3'-8"		2	3'-8"						
AC2	#4	BNT	2	3'-8"		2	3'-8"		2	3'-8"		2	3'-8"		2	3'-8"						
AD1	#4	STR	2	78'-0"		2	78'-0"		2	78'-0"		2	78'-0"		2	78'-0"						
AL1	#4	STR	30	40'-9"		34	40'-9"		40	40'-9"		44	40'-9"		48	40'-9"						
AL2	#4	STR	124	20'-1" AVG.	2'-6" TO 37'-8"	124	20'-1" AVG.	2'-6" TO 37'-8"	124	20'-1" AVG.	2'-6" TO 37'-8"	124	20'-1" AVG.	2'-6" TO 37'-8"	124	20'-1" AVG.	2'-6" TO 37'-8"					
AL3	#4	STR	4	38'-9"		4	38'-9"		4	38'-9"		4	38'-9"		4	38'-9"						
AT1	#4	STR	4	82'-11"		4	85'-3"		4	87'-7"		4	89'-10"		4	92'-2"						
AT2	#4	STR	12	72'-8" AVG.	63'-2" TO 82'-2"	13	74'-1 1/2" AVG.	63'-9" TO 84'-6"	15	74'-8 1/2" AVG.	62'-7" TO 86'-10"	16	76'-1 1/2" AVG.	63'-2" TO 89'-1"	17	77'-7" AVG.	63'-9" TO 91'-5"					
AT3	#5	STR	12	72'-8" AVG.	63'-2" TO 82'-2"	13	74'-1 1/2" AVG.	63'-9" TO 84'-6"	15	74'-8 1/2" AVG.	62'-7" TO 86'-10"	16	76'-1 1/2" AVG.	63'-2" TO 89'-1"	17	77'-7" AVG.	63'-9" TO 91'-5"					
AT4	#4	STR	26	37'-3" AVG.	15'-7" TO 58'-11"	25	38'-8 1/2" AVG.	17'-11" TO 59'-6"	23	39'-3 1/2" AVG.	20'-3" TO 58'-4"	22	40'-8 1/2" AVG.	22'-6" TO 58'-11"	21	42'-2" AVG.	24'-10" TO 59'-6"					
AT5	#5	STR	26	37'-3" AVG.	15'-7" TO 58'-11"	25	38'-8 1/2" AVG.	17'-11" TO 59'-6"	23	39'-3 1/2" AVG.	20'-3" TO 58'-4"	22	40'-8 1/2" AVG.	22'-6" TO 58'-11"	21	42'-2" AVG.	24'-10" TO 59'-6"					

- ① INCLUDES 2'-6" LAP
- ② QUANTITY SHOWN REPRESENTS TWO SETS

APPROVED BY BRIDGE ENGINEER *Debra J. Nuss* DATE 4/09/09

OKLAHOMA DEPT. OF TRANSPORTATION
BRIDGE STANDARD (ENGLISH)

RCB CULVERTS - END SECTION DETAILS
SINGLE CELL - 11'-0" HEIGHT - 30°
SHEET NO. 1 OF 3

1999 SPECIFICATIONS RCB-E1-H11-30-1 OOE B-687E