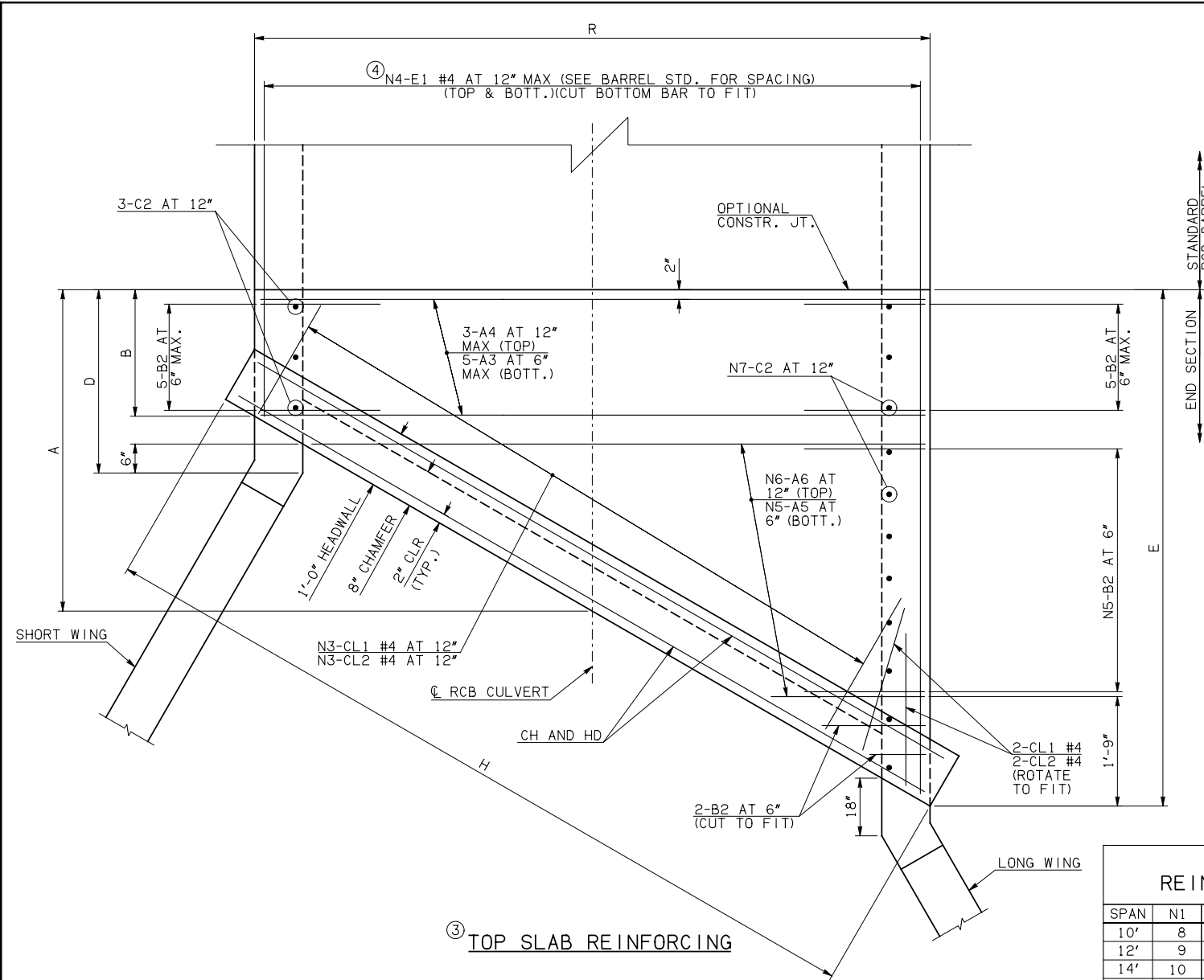
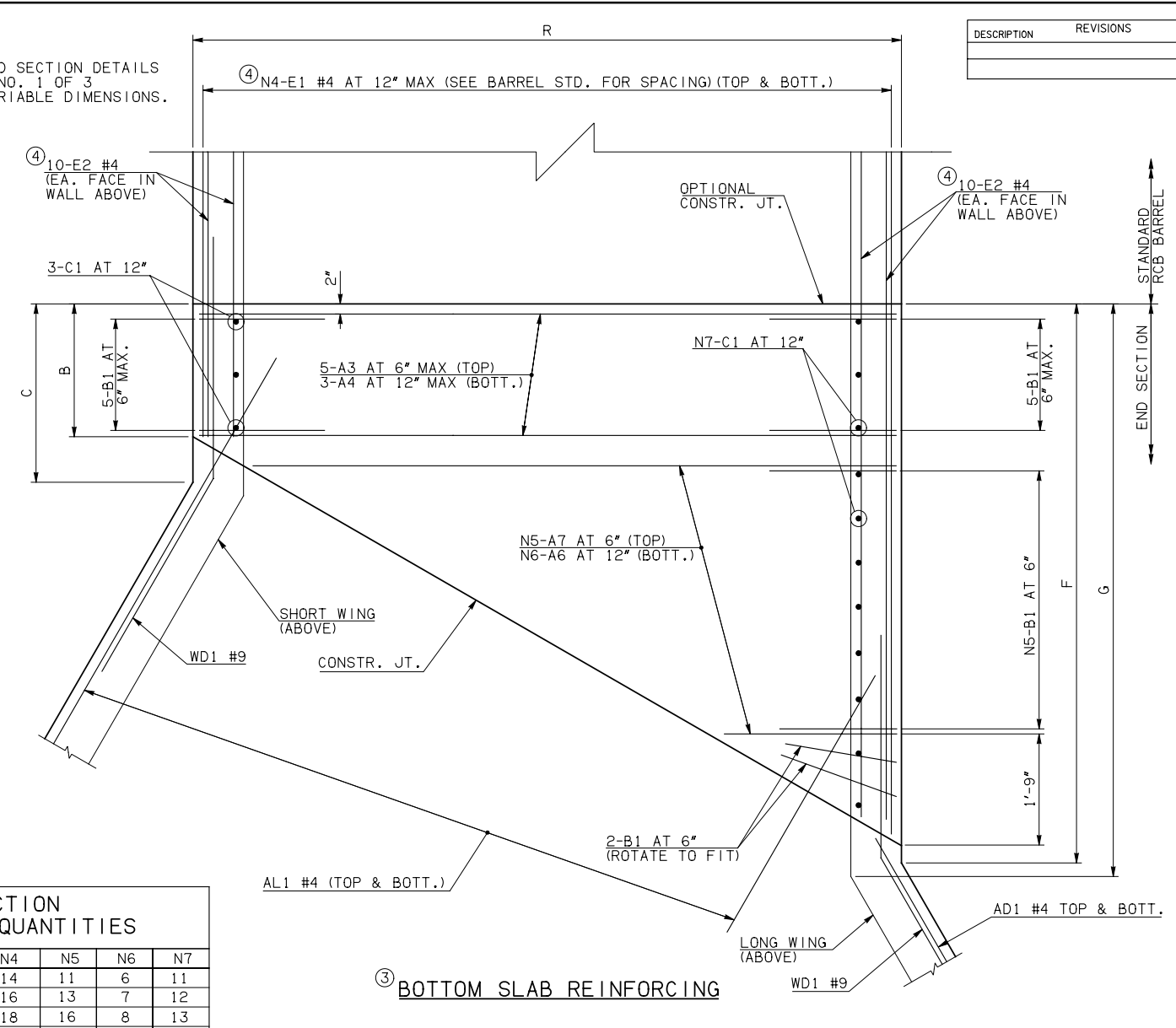


| DESCRIPTION | REVISIONS | DATE |
|-------------|-----------|------|
|             |           |      |



NOTE: SEE END SECTION DETAILS SHEET NO. 1 OF 3 FOR VARIABLE DIMENSIONS.



| SPAN | N1 | N2 | N3 | N4 | N5 | N6 | N7 |
|------|----|----|----|----|----|----|----|
| 10'  | 8  | 27 | 12 | 14 | 11 | 6  | 11 |
| 12'  | 9  | 26 | 15 | 16 | 13 | 7  | 12 |
| 14'  | 10 | 25 | 17 | 18 | 16 | 8  | 13 |
| 16'  | 12 | 23 | 20 | 20 | 18 | 9  | 14 |
| 18'  | 13 | 22 | 22 | 22 | 21 | 11 | 16 |
| 20'  | 14 | 21 | 24 | 24 | 23 | 12 | 17 |

### END CONNECTION BAR LIST

ONE END CONNECTION SHOWN

| MARK | FORM | 10' SPAN |      | 12' SPAN       |                 | 14' SPAN |      | 16' SPAN       |                   | 18' SPAN |      | 20' SPAN       |                  |
|------|------|----------|------|----------------|-----------------|----------|------|----------------|-------------------|----------|------|----------------|------------------|
|      |      | SIZE     | QTY. | LENGTH         | REMARKS         | SIZE     | QTY. | LENGTH         | REMARKS           | SIZE     | QTY. | LENGTH         | REMARKS          |
| A3   | STR  | #7       | 10   | 11'-8"         |                 | #7       | 10   | 13'-8"         |                   | #7       | 10   | 15'-10"        |                  |
| A4   | STR  | #4       | 6    | 11'-8"         |                 | #4       | 6    | 13'-8"         |                   | #4       | 6    | 15'-10"        |                  |
| A5   | STR  | #7       | 11   | 5'-8" AVG.     | 1'-4" TO 10'-0" | #7       | 13   | 6'-6 1/2" AVG. | 1'-4" TO 11'-9"   | #7       | 16   | 7'-10" AVG.    | 1'-4" TO 14'-4"  |
| A6   | STR  | #4       | 12   | 6'-10" AVG.    | 2'-6" TO 11'-2" | #4       | 14   | 7'-8 1/2" AVG. | 2'-6" TO 12'-11"  | #4       | 16   | 8'-6 1/2" AVG. | 2'-6" TO 14'-7"  |
| A7   | STR  | #7       | 11   | 6'-10" AVG.    | 2'-6" TO 11'-2" | #7       | 13   | 7'-8 1/2" AVG. | 2'-6" TO 12'-11"  | #7       | 16   | 9'-0" AVG.     | 2'-6" TO 15'-6"  |
| B1   | BNT  | #6       | 23   | 5'-6"          |                 | #6       | 25   | 5'-10"         |                   | #6       | 30   | 6'-8"          |                  |
| B2   | BNT  | #6       | 23   | 13'-6"         |                 | #6       | 25   | 13'-9"         |                   | #6       | 30   | 14'-7"         |                  |
| C1   | STR  | #5       | 14   | 2'-6"          |                 | #5       | 15   | 2'-7"          |                   | #4       | 17   | 2'-7"          |                  |
| C2   | STR  | #5       | 14   | 10'-10"        |                 | #5       | 15   | 10'-11"        |                   | #4       | 17   | 11'-3"         |                  |
| E1   | STR  | #4       | 56   | 5'-9 1/2" AVG. | 2'-5" TO 9'-2"  | #4       | 64   | 6'-9 1/2" AVG. | 2'-10" TO 10'-9"  | #4       | 72   | 6'-9" AVG.     | 2'-2" TO 11'-4"  |
| E2   | STR  | #4       | 40   | 5'-7" AVG.     | 2'-5" AND 8'-9" | #4       | 40   | 6'-7" AVG.     | 2'-10" AND 10'-4" | #4       | 40   | 7'-6 1/2" AVG. | 2'-7" AND 12'-6" |

### QUANTITIES

| ITEM              | UNIT | 10' SPAN | 12' SPAN | 14' SPAN | 16' SPAN | 18' SPAN | 20' SPAN |
|-------------------|------|----------|----------|----------|----------|----------|----------|
| CLASS AA CONCRETE | CY   | 99.40    | 106.20   | 112.00   | 122.30   | 128.20   | 137.80   |
| REINFORCING STEEL | LB   | 13500.00 | 14200.00 | 14820.00 | 15980.00 | 17890.00 | 18810.00 |

NOTE: QUANTITIES ABOVE ARE FOR ONE END SECTION, WHICH IS COMPRISED OF ONE END CONNECTION, ONE HEADWALL, ONE APRON, AND TWO WINGWALLS.

NOTES: ② QUANTITY SHOWN REPRESENTS TWO SETS.

③ FOR FURTHER INFORMATION REGARDING END SECTION BARS A, B, C, E1, AND E2, REFER TO RCB CULVERT - BARREL DETAILS.

④ LENGTHS OF E1 & E2 BARS SHOWN ARE ADDITIONAL LENGTHS REQUIRED FOR THE END SECTION. LAP SPLICES, AS REQUIRED, SHALL BE IN ACCORDANCE WITH RCB BARREL STANDARD NOTES.

⑤ 4-SETS OF N4-E1 BARS REQUIRED.

⑥ 2-SETS OF 20-E2 BARS REQUIRED WITH LENGTHS AS SHOWN CORRESPONDING TO SHORT EXTERIOR WALL AND LONG EXTERIOR WALL.

APPROVED BY BRIDGE ENGINEER

*Robert J. Muech*

DATE 4/09/09

OKLAHOMA DEPT. OF TRANSPORTATION  
BRIDGE STANDARD (ENGLISH)  
RCB CULVERTS - END SECTION DETAILS  
SINGLE CELL - 10'-0" HEIGHT - 30°  
SHEET NO. 2 OF 3

1999 SPECIFICATIONS

RCB-E1-H10-30-2

OOE

B-685E