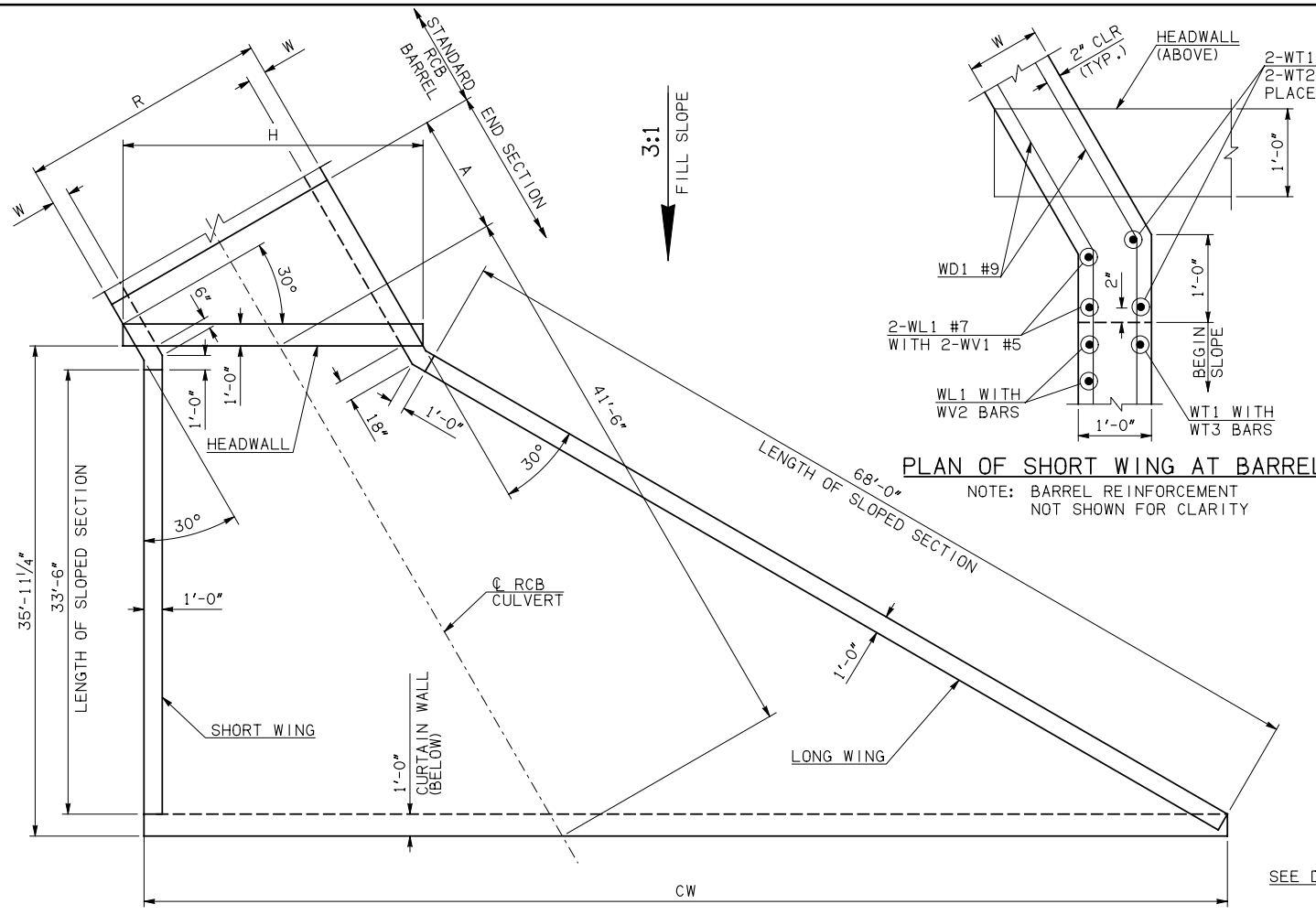


DESCRIPTION	REVISIONS	DATE



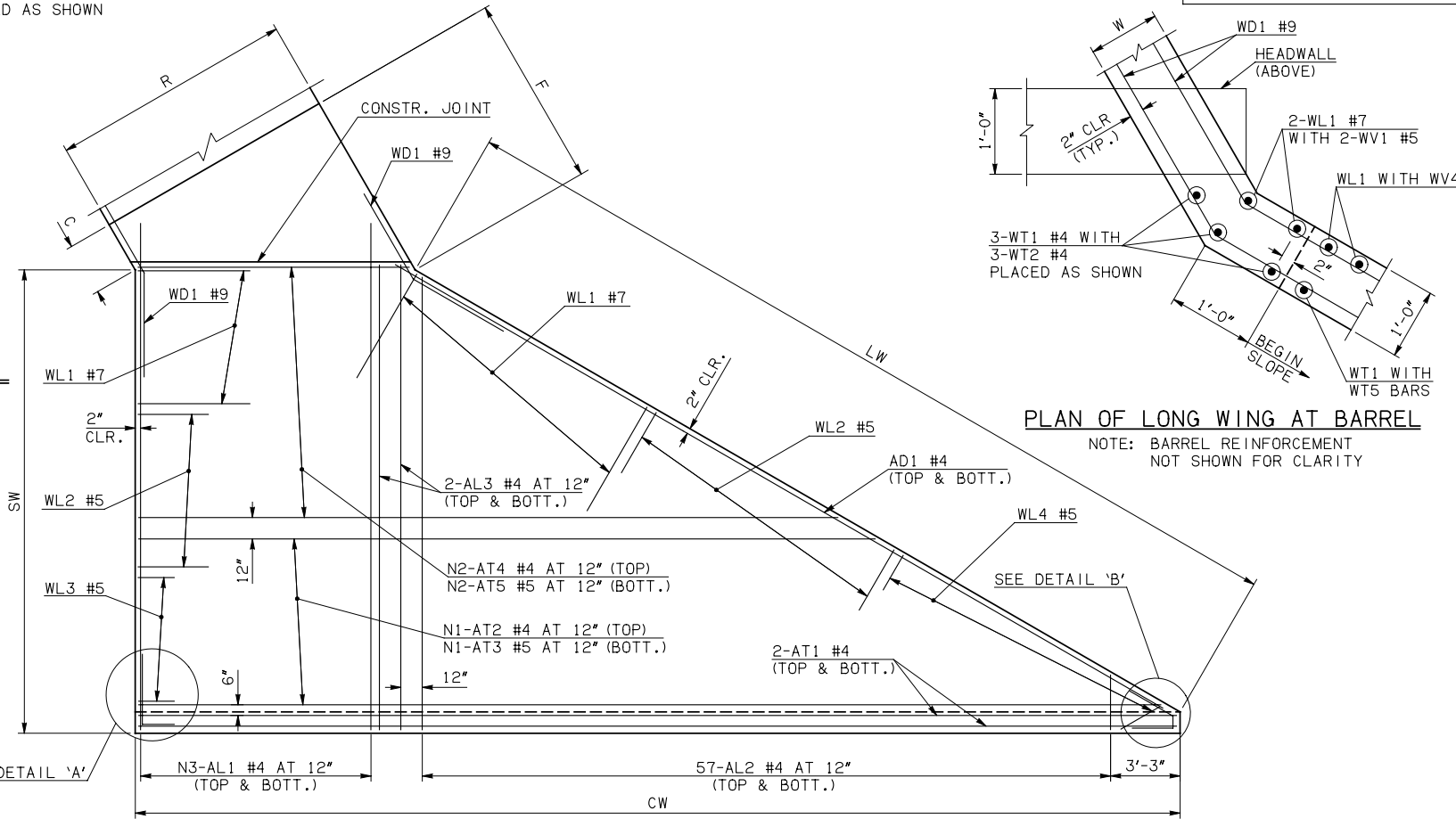
END SECTION PLAN

NOTE: SEE END SECTION DETAILS SHEET NO. 2 OF 3 FOR VARIABLE REINFORCING QUANTITIES.

END SECTION VARIABLE DIMENSIONS													
SPAN	W	A	B	C	CW	D	E	F	G	H	LW	R	SW
10'	12"	6'-0"	2'-6 1/2"	3'-4 1/4"	73'-3 3/4"	3'-7 1/4"	9'-5 1/2"	10'-1 1/2"	10'-4 3/4"	14'-5 1/4"	68'-8 3/4"	12'-0"	35'-2 3/4"
12'	12"	7'-0"	2'-11 1/2"	3'-9 1/4"	75'-7 1/4"	4'-0 1/2"	11'-0 1/2"	11'-8 1/4"	11'-11 1/2"	16'-9"	68'-8 3/4"	14'-0"	35'-2 3/4"
14'	13"	7'-0"	2'-4"	3'-4"	77'-11"	3'-5 1/2"	11'-8"	12'-5"	12'-6 1/2"	19'-3"	68'-6 3/4"	16'-2"	35'-0 3/4"
16'	14"	8'-0"	2'-8 1/2"	3'-10 3/4"	80'-2 3/4"	3'-10 1/2"	13'-3 1/2"	14'-1 3/4"	21'-9"	18'-4"	68'-4 3/4"	18'-4"	34'-10 3/4"
18'	15"	8'-0"	2'-1"	3'-5 3/4"	82'-6 1/2"	3'-3 3/4"	13'-11"	14'-10 1/4"	14'-8 1/4"	24'-3"	68'-2 3/4"	20'-6"	34'-8 3/4"
20'	15"	9'-0"	2'-6"	3'-10 3/4"	84'-10 1/4"	3'-8 3/4"	15'-6"	16'-5 1/4"	16'-3 1/4"	26'-6 3/4"	68'-2 3/4"	22'-6"	34'-8 3/4"

PLAN OF SHORT WING AT BARREL

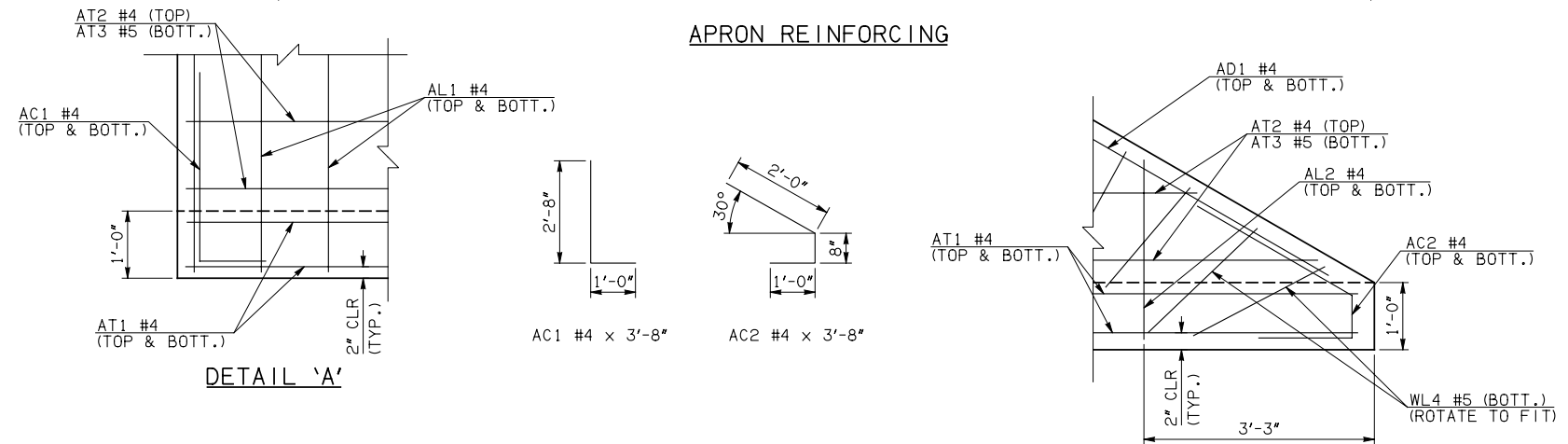
NOTE: BARREL REINFORCEMENT NOT SHOWN FOR CLARITY



PLAN OF LONG WING AT BARREL

NOTE: BARREL REINFORCEMENT NOT SHOWN FOR CLARITY

APRON REINFORCING



APRON BAR LIST

ONE APRON SHOWN

MARK	SIZE	FORM	10' SPAN		12' SPAN		14' SPAN		16' SPAN		18' SPAN		20' SPAN				
			QTY.	LENGTH	REMARKS	QTY.	LENGTH	REMARKS	QTY.	LENGTH	REMARKS	QTY.	LENGTH	REMARKS	QTY.	LENGTH	REMARKS
AC1	#4	BNT	2	3'-8"		2	3'-8"		2	3'-8"		2	3'-8"		2	3'-8"	
AC2	#4	BNT	2	3'-8"		2	3'-8"		2	3'-8"		2	3'-8"		2	3'-8"	
AD1	#4	STR	2	72'-0"		2	72'-0"		2	72'-0"		2	72'-0"		2	72'-0"	
AL1	#4	STR	24	37'-9"		30	37'-9"		40	37'-9"		44	37'-9"		48	37'-9"	
AL2	#4	STR	114	18'-8" AVG.	2'-6" TO 34'-10"	114	18'-8" AVG.	2'-6" TO 34'-10"	114	18'-8" AVG.	2'-6" TO 34'-10"	114	18'-8" AVG.	2'-6" TO 34'-10"	114	18'-8" AVG.	2'-6" TO 34'-10"
AL3	#4	STR	4	35'-9"		4	35'-9"		4	35'-9"		4	35'-9"		4	35'-9"	
AT1	#4	STR	4	75'-5"		4	77'-9"		4	80'-1"		4	84'-8"		4	87'-0"	
AT2	#4	STR	8	68'-7 1/2" AVG.	62'-7" TO 74'-8"	9	70'-1" AVG.	63'-2" TO 77'-0"	10	71'-6 1/2" AVG.	63'-9" TO 79'-4"	12	72'-1" AVG.	62'-7" TO 81'-7"	13	73'-6 1/2" AVG.	63'-2" TO 83'-11"
AT3	#5	STR	8	68'-7 1/2" AVG.	62'-7" TO 74'-8"	9	70'-1" AVG.	63'-2" TO 77'-0"	10	71'-6 1/2" AVG.	63'-9" TO 79'-4"	12	72'-1" AVG.	62'-7" TO 81'-7"	13	73'-6 1/2" AVG.	63'-2" TO 83'-11"
AT4	#4	STR	27	35'-10" AVG.	13'-4" TO 58'-4"	26	37'-3" AVG.	15'-7" TO 58'-11"	25	38'-8 1/2" AVG.	17'-11" TO 59'-6"	23	39'-3 1/2" AVG.	20'-3" TO 58'-4"	22	40'-8 1/2" AVG.	22'-6" TO 58'-11"
AT5	#5	STR	27	35'-10" AVG.	13'-4" TO 58'-4"	26	37'-3" AVG.	15'-7" TO 58'-11"	25	38'-8 1/2" AVG.	17'-11" TO 59'-6"	23	39'-3 1/2" AVG.	20'-3" TO 58'-4"	22	40'-8 1/2" AVG.	22'-6" TO 58'-11"

- ① INCLUDES 2'-6" LAP
- ② QUANTITY SHOWN REPRESENTS TWO SETS.

APPROVED BY BRIDGE ENGINEER *Robert J. Muech* DATE 4/09/09

OKLAHOMA DEPT. OF TRANSPORTATION
 BRIDGE STANDARD (ENGLISH)
 RCB CULVERTS - END SECTION DETAILS
 SINGLE CELL - 10'-0" HEIGHT - 30°
 SHEET NO. 1 OF 3