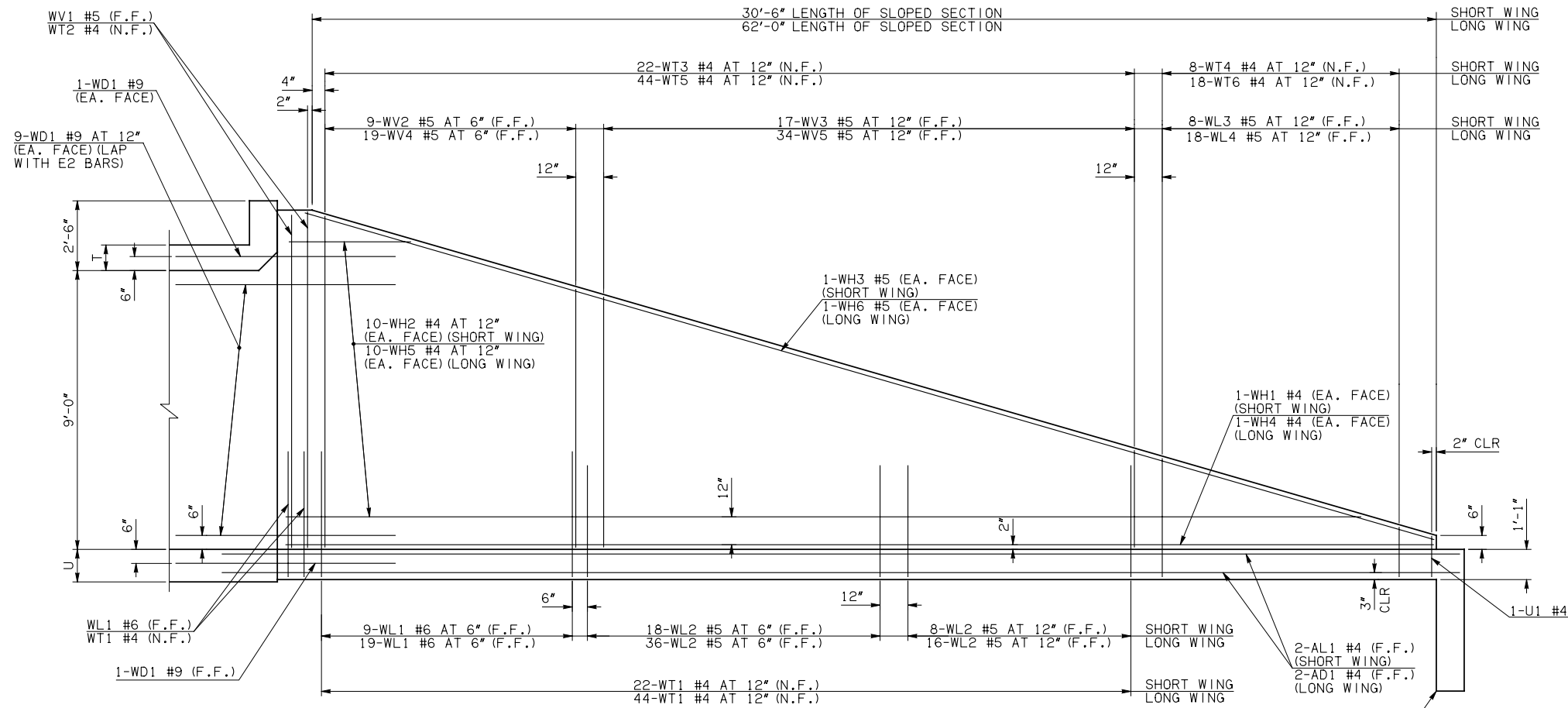
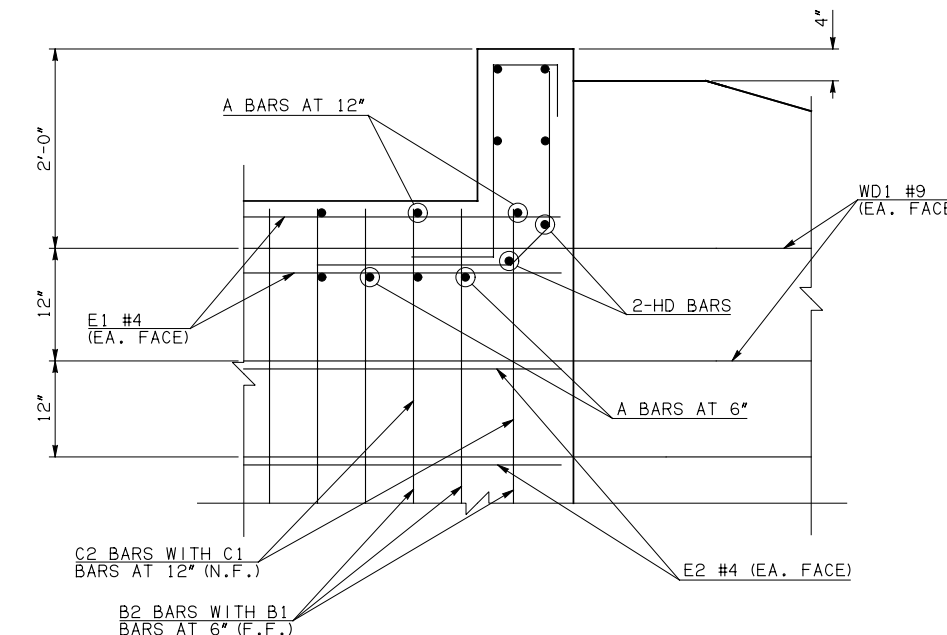
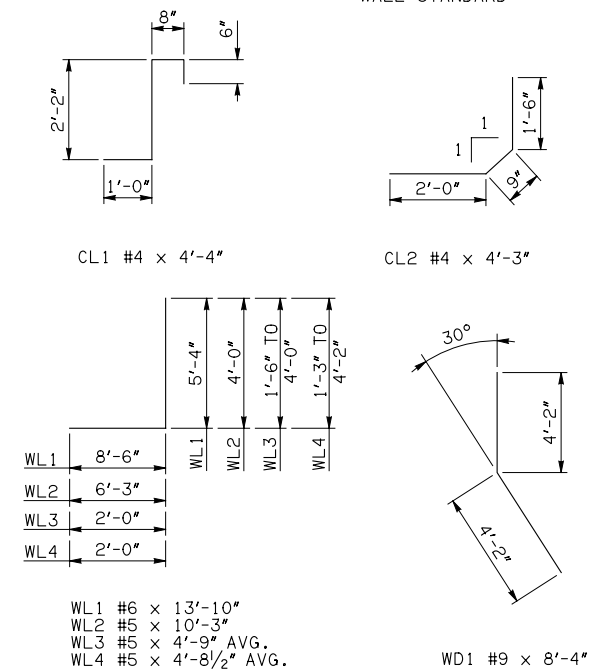
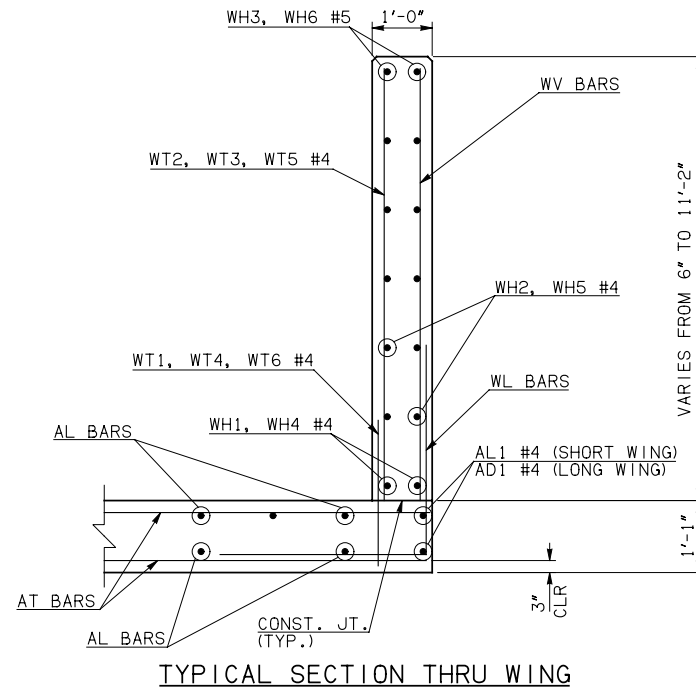


DESCRIPTION	REVISIONS	DATE

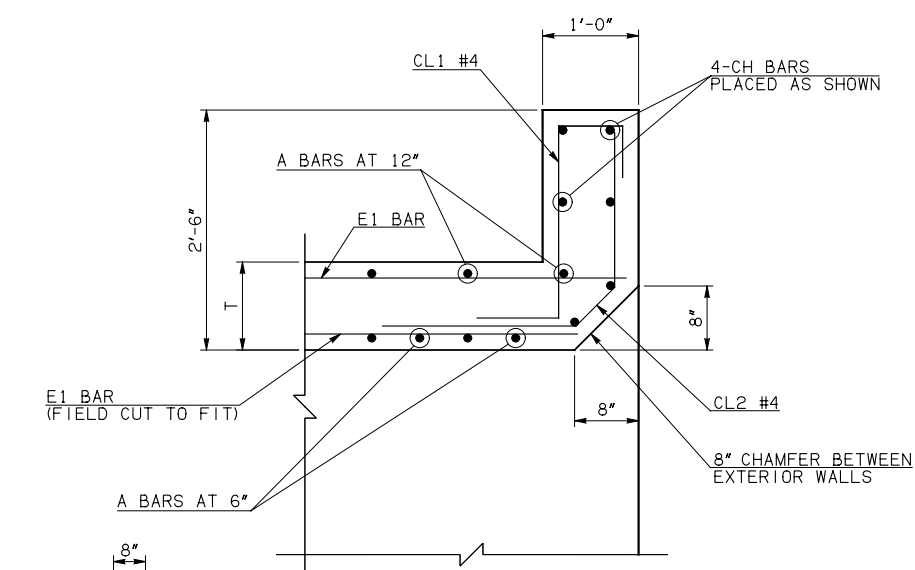


NOTE: F.F. = FAR FACE  
N.F. = NEAR FACE

**WING ELEVATION**



③ HEADWALL DETAIL AT EXTERIOR WALL



③ HEADWALL DETAIL AT MIDSPAN  
DIMENSION SHOWN NORMAL TO HEADWALL

- NOTES:
- ① INCLUDES 2'-6" LAP
  - ② QUANTITY SHOWN REPRESENTS TWO SETS.
  - ③ FOR FURTHER INFORMATION REGARDING END SECTION BARS A, B, C, E1, AND E2, REFER TO RCB CULVERT - BARREL DETAILS.

**WINGWALL BAR LIST**  
(LONG AND SHORT WING INCLUDED)

MARK	SIZE	QTY.	FORM	LENGTH	REMARKS
WD1	#9	42	BNT	8'-4"	
WH1	#4	2	STR	31'-4"	
WH2	#4	20	STR	16'-2 1/2" AVG.	3'-4" TO 29'-1"
WH3	#5	2	STR	32'-1"	
WH4	#4	2	STR	65'-4"	
WH5	#4	20	STR	31'-11" AVG.	5'-9" TO 58'-1"
WH6	#5	2	STR	65'-2"	
WL1	#6	32	BNT	13'-10"	
WL2	#5	78	BNT	10'-3"	
WL3	#5	8	BNT	4'-9" AVG.	3'-6" TO 6'-0"
WL4	#5	18	BNT	4'-8 1/2" AVG.	3'-3" TO 6'-2"
WT1	#4	71	STR	2'-10"	
WT2	#4	5	STR	11'-0"	
WT3	#4	22	STR	7'-2" AVG.	3'-6" TO 10'-10"
WT4	#4	8	STR	2'-9" AVG.	1'-6" TO 4'-0"
WT5	#4	44	STR	7'-2 1/2" AVG.	3'-6" TO 10'-11"
WT6	#4	18	STR	2'-8 1/2" AVG.	1'-3" TO 4'-2"
WV1	#5	4	STR	11'-0"	
WV2	#5	9	STR	10'-1 1/2" AVG.	9'-5" TO 10'-10"
WV3	#5	17	STR	6'-3 1/2" AVG.	3'-6" TO 9'-1"
WV4	#5	19	STR	10'-1 1/2" AVG.	9'-4" TO 10'-11"
WV5	#5	34	STR	6'-4" AVG.	3'-6" TO 9'-2"
U1	#4	2	BNT	3'-0"	

**HEADWALL BAR LIST**

MARK	FORM	ONE HEADWALL SHOWN																	
		10' SPAN			12' SPAN			14' SPAN			16' SPAN			18' SPAN			20' SPAN		
		SIZE	QTY.	LENGTH	SIZE	QTY.	LENGTH	SIZE	QTY.	LENGTH	SIZE	QTY.	LENGTH	SIZE	QTY.	LENGTH	SIZE	QTY.	LENGTH
CH	STR	#4	4	14'-1"	#4	4	16'-4"	#4	4	18'-10"	#5	4	21'-4"	#5	4	23'-10"	#5	4	26'-2"
CL1	BNT	#4	14	4'-4"	#4	17	4'-4"	#4	19	4'-4"	#4	22	4'-4"	#4	24	4'-4"	#4	26	4'-4"
CL2	BNT	#4	14	4'-3"	#4	17	4'-3"	#4	19	4'-3"	#4	22	4'-3"	#4	24	4'-3"	#4	26	4'-3"
HD	STR	#8	2	14'-1"	#8	2	16'-4"	#8	2	18'-10"	#9	2	21'-4"	#9	2	23'-10"	#9	2	26'-2"

APPROVED BY BRIDGE ENGINEER *Robert J. Muehl* DATE 4/09/09

**OKLAHOMA DEPT. OF TRANSPORTATION**  
**BRIDGE STANDARD (ENGLISH)**  
RCB CULVERTS - END SECTION DETAILS  
SINGLE CELL - 9'-0" HEIGHT - 30°  
SHEET NO. 3 OF 3