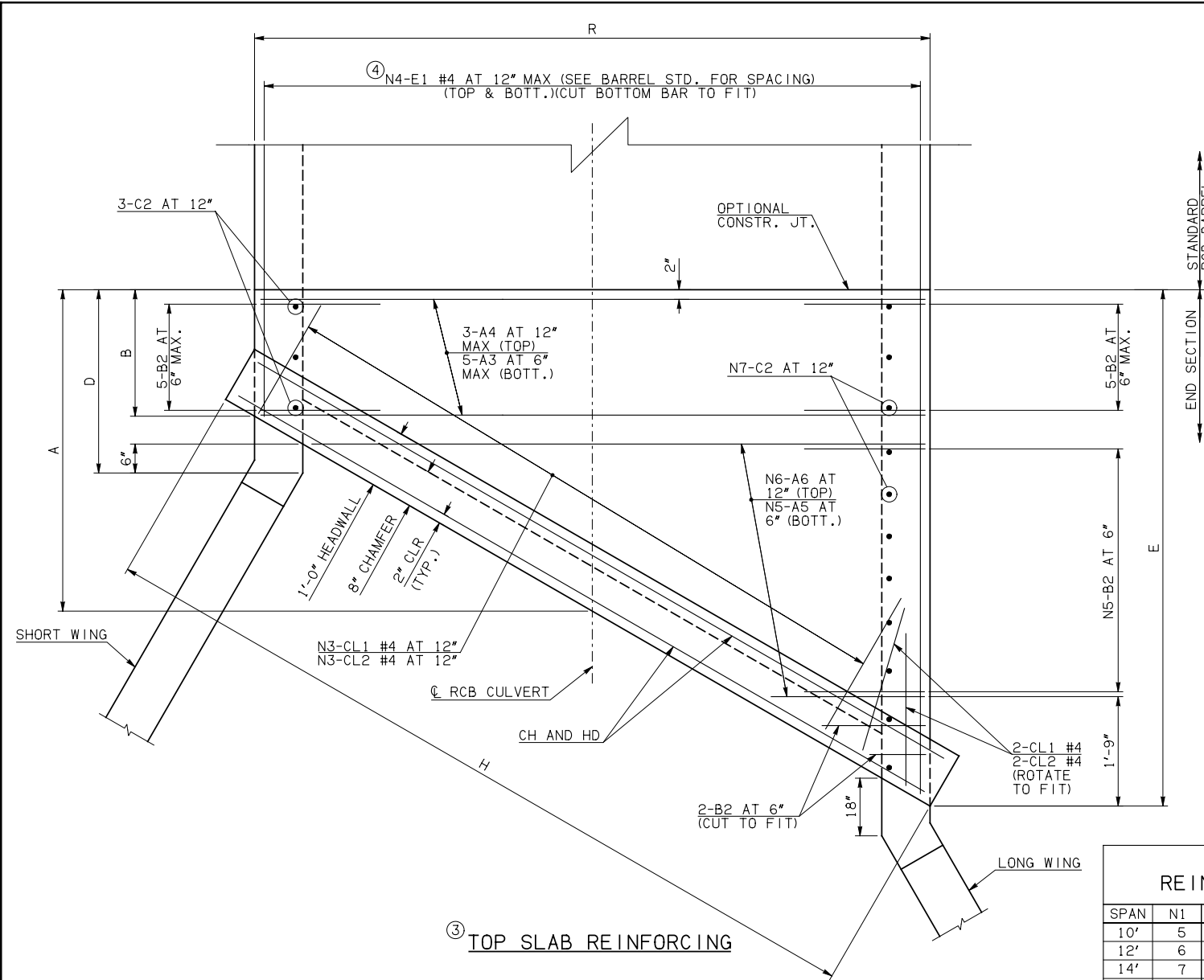
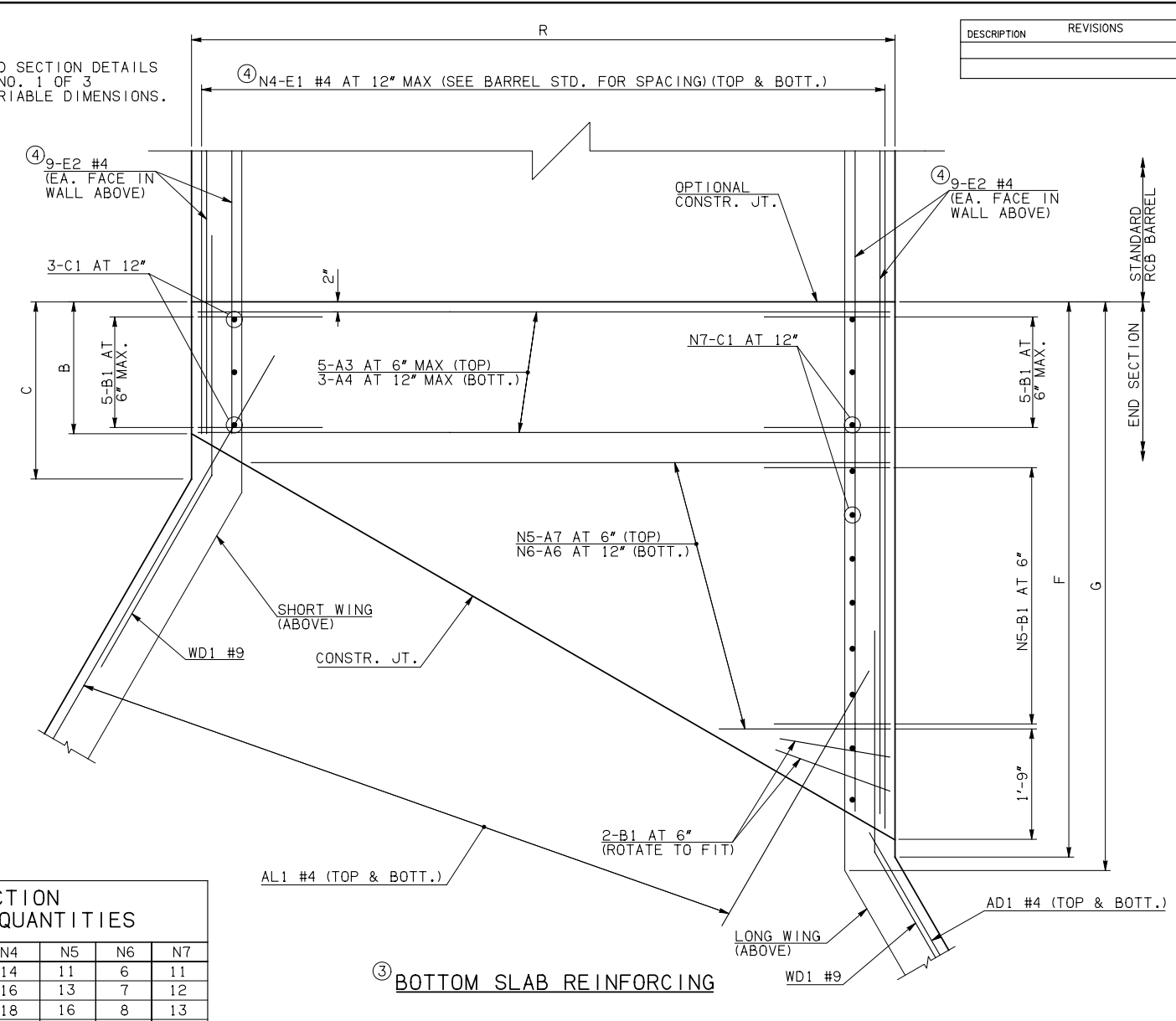


| DESCRIPTION | REVISIONS | DATE |
|-------------|-----------|------|
| | | |



NOTE: SEE END SECTION DETAILS SHEET NO. 1 OF 3 FOR VARIABLE DIMENSIONS.



| SPAN | N1 | N2 | N3 | N4 | N5 | N6 | N7 |
|------|----|----|----|----|----|----|----|
| 10' | 5 | 27 | 12 | 14 | 11 | 6 | 11 |
| 12' | 6 | 26 | 15 | 16 | 13 | 7 | 12 |
| 14' | 7 | 25 | 17 | 18 | 16 | 8 | 13 |
| 16' | 9 | 23 | 20 | 20 | 18 | 9 | 14 |
| 18' | 10 | 22 | 22 | 22 | 21 | 11 | 16 |
| 20' | 11 | 21 | 24 | 24 | 23 | 12 | 17 |

END CONNECTION BAR LIST

ONE END CONNECTION SHOWN

| MARK | FORM | 10' SPAN | | 12' SPAN | | 14' SPAN | | 16' SPAN | | 18' SPAN | | 20' SPAN | |
|------|------|----------|------|----------------|-----------------|----------|------|----------------|-------------------|----------|------|----------------|-------------------|
| | | SIZE | QTY. | LENGTH | REMARKS | SIZE | QTY. | LENGTH | REMARKS | SIZE | QTY. | LENGTH | REMARKS |
| A3 | STR | #7 | 10 | 11'-8" | | #7 | 10 | 13'-8" | | #7 | 10 | 15'-10" | |
| A4 | STR | #4 | 6 | 11'-8" | | #4 | 6 | 13'-8" | | #4 | 6 | 15'-10" | |
| A5 | STR | #7 | 11 | 5'-8" AVG. | 1'-4" TO 10'-0" | #7 | 13 | 6'-6 1/2" AVG. | 1'-4" TO 11'-9" | #7 | 16 | 7'-10" AVG. | 1'-4" TO 14'-4" |
| A6 | STR | #4 | 12 | 6'-10" AVG. | 2'-6" TO 11'-2" | #4 | 14 | 7'-8 1/2" AVG. | 2'-6" TO 12'-11" | #4 | 16 | 8'-6 1/2" AVG. | 2'-6" TO 14'-7" |
| A7 | STR | #7 | 11 | 6'-10" AVG. | 2'-6" TO 11'-2" | #7 | 13 | 7'-8 1/2" AVG. | 2'-6" TO 12'-11" | #7 | 16 | 9'-0" AVG. | 2'-6" TO 15'-6" |
| B1 | BNT | #6 | 23 | 5'-4" | | #6 | 25 | 5'-9" | | #6 | 30 | 6'-8" | |
| B2 | BNT | #6 | 23 | 12'-4" | | #6 | 25 | 12'-8" | | #6 | 30 | 13'-7" | |
| C1 | STR | #4 | 14 | 2'-2" | | #4 | 15 | 2'-3" | | #4 | 17 | 2'-7" | |
| C2 | STR | #4 | 14 | 9'-10" | | #4 | 15 | 9'-11" | | #4 | 17 | 10'-3" | |
| E1 | STR | #4 | 56 | 5'-9 1/2" AVG. | 2'-5" TO 9'-2" | #4 | 64 | 6'-9 1/2" AVG. | 2'-10" TO 10'-9" | #4 | 72 | 6'-9" AVG. | 2'-2" TO 11'-4" |
| E2 | STR | #4 | 36 | 5'-7" AVG. | 2'-5" AND 8'-9" | #4 | 36 | 6'-7" AVG. | 2'-10" AND 10'-4" | #4 | 36 | 6'-6 1/2" AVG. | 2'-2" AND 10'-11" |

QUANTITIES

| ITEM | UNIT | 10' SPAN | 12' SPAN | 14' SPAN | 16' SPAN | 18' SPAN | 20' SPAN |
|-------------------|------|----------|----------|----------|----------|----------|----------|
| CLASS AA CONCRETE | CY | 86.30 | 92.70 | 98.20 | 108.10 | 113.60 | 122.90 |
| REINFORCING STEEL | LB | 11250.00 | 11910.00 | 12590.00 | 13730.00 | 15130.00 | 16480.00 |

NOTE: QUANTITIES ABOVE ARE FOR ONE END SECTION, WHICH IS COMPRISED OF ONE END CONNECTION, ONE HEADWALL, ONE APRON, AND TWO WINGWALLS.

NOTES: ② QUANTITY SHOWN REPRESENTS TWO SETS.

③ FOR FURTHER INFORMATION REGARDING END SECTION BARS A, B, C, E1, AND E2, REFER TO RCB CULVERT - BARREL DETAILS.

④ LENGTHS OF E1 & E2 BARS SHOWN ARE ADDITIONAL LENGTHS REQUIRED FOR THE END SECTION. LAP SPLICES, AS REQUIRED, SHALL BE IN ACCORDANCE WITH RCB BARREL STANDARD NOTES.

⑤ 4-SETS OF N4-E1 BARS REQUIRED.

⑥ 2-SETS OF 18-E2 BARS REQUIRED WITH LENGTHS AS SHOWN CORRESPONDING TO SHORT EXTERIOR WALL AND LONG EXTERIOR WALL.

APPROVED BY BRIDGE ENGINEER *Robert J. Rusch* DATE 4/09/09

OKLAHOMA DEPT. OF TRANSPORTATION
BRIDGE STANDARD (ENGLISH)
RCB CULVERTS - END SECTION DETAILS
SINGLE CELL - 9'-0" HEIGHT - 30°
SHEET NO. 2 OF 3