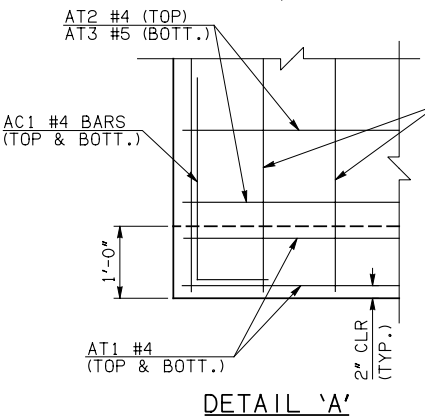


END SECTION PLAN

NOTE: SEE END SECTION DETAILS SHEET NO. 2 OF 3 FOR VARIABLE REINFORCING QUANTITIES.

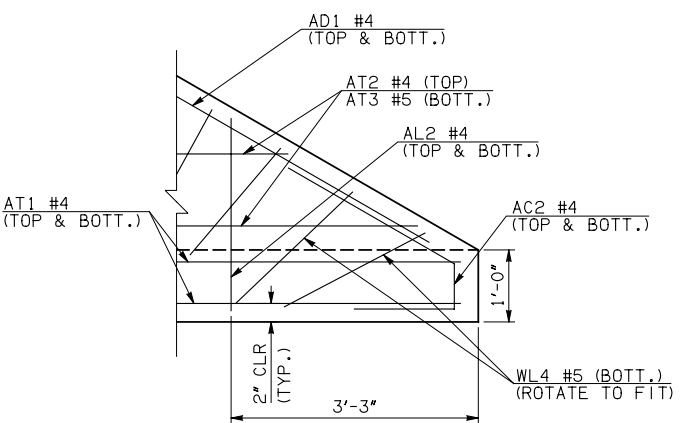
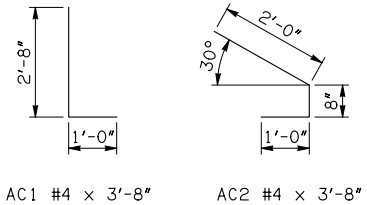
END SECTION VARIABLE DIMENSIONS

SPAN	W	A	B	C	CW	D	E	F	G	H	LW	R	SW
10'	12"	6'-0"	2'-6 1/2"	3'-4 1/4"	68'-1 1/4"	3'-7 1/4"	9'-5 1/2"	10'-1 1/2"	10'-4 3/4"	14'-5 1/4"	62'-8 3/4"	12'-0"	32'-2 3/4"
12'	12"	7'-0"	2'-11 1/2"	3'-9 1/4"	70'-5"	4'-0 1/2"	11'-0 1/2"	11'-8 1/4"	11'-11 1/2"	16'-9"	62'-8 3/4"	14'-0"	32'-2 3/4"
14'	13"	7'-0"	2'-4"	3'-4"	72'-8 3/4"	3'-5 1/2"	11'-8"	12'-5"	12'-6 1/2"	19'-3"	62'-6 3/4"	16'-2"	32'-0 3/4"
16'	14"	8'-0"	2'-8 1/2"	3'-10 3/4"	75'-0 1/2"	3'-10 1/2"	13'-3 1/2"	14'-1 3/4"	14'-1 1/2"	21'-9"	62'-4 3/4"	18'-4"	31'-10 3/4"
18'	15"	8'-0"	2'-1"	3'-5 3/4"	77'-4 1/4"	3'-3 3/4"	13'-11"	14'-10 1/4"	14'-8 1/4"	24'-3"	62'-2 3/4"	20'-6"	31'-8 3/4"
20'	15"	9'-0"	2'-6"	3'-10 3/4"	79'-7 3/4"	3'-8 3/4"	15'-6"	16'-5 1/4"	16'-3 1/4"	26'-6 3/4"	62'-2 3/4"	22'-6"	31'-8 3/4"



DETAIL 'A'

APRON REINFORCING



DETAIL 'B'

APRON BAR LIST

ONE APRON SHOWN

MARK	SIZE	FORM	10' SPAN			12' SPAN			14' SPAN			16' SPAN			18' SPAN			20' SPAN		
			QTY.	LENGTH	REMARKS	QTY.	LENGTH	REMARKS	QTY.	LENGTH	REMARKS	QTY.	LENGTH	REMARKS	QTY.	LENGTH	REMARKS	QTY.	LENGTH	REMARKS
	AC1	#4	BNT	2	3'-8"		2	3'-8"		2	3'-8"		2	3'-8"		2	3'-8"		2	3'-8"
	AC2	#4	BNT	2	3'-8"		2	3'-8"		2	3'-8"		2	3'-8"		2	3'-8"		2	3'-8"
①	AD1	#4	STR	2	66'-0"		2	66'-0"		2	66'-0"		2	66'-0"		2	66'-0"		2	66'-0"
	AL1	#4	STR	24	34'-9"		30	34'-9"		34	34'-9"		40	34'-9"		44	34'-9"		48	34'-9"
②	AL2	#4	STR	104	17'-2 1/2" AVG.	2'-6" TO 31'-11"	104	17'-2 1/2" AVG.	2'-6" TO 31'-11"	104	17'-2 1/2" AVG.	2'-6" TO 31'-11"	104	17'-2 1/2" AVG.	2'-6" TO 31'-11"	104	17'-2 1/2" AVG.	2'-6" TO 31'-11"	104	17'-2 1/2" AVG.
	AL3	#4	STR	4	32'-9"		4	32'-9"		4	32'-9"		4	32'-9"		4	32'-9"		4	32'-9"
①	AT1	#4	STR	4	70'-3"		4	72'-6"		4	74'-10"		4	77'-2"		4	79'-6"		4	81'-9"
①	AT2	#4	STR	5	66'-0 1/2" AVG.	62'-7" TO 69'-6"	6	67'-6" AVG.	63'-2" TO 71'-10"	7	68'-11" AVG.	63'-9" TO 74'-1"	9	69'-6" AVG.	62'-7" TO 76'-5"	10	70'-11 1/2" AVG.	63'-2" TO 78'-9"	11	72'-4 1/2" AVG.
①	AT3	#5	STR	5	66'-0 1/2" AVG.	62'-7" TO 69'-6"	6	67'-6" AVG.	63'-2" TO 71'-10"	7	68'-11" AVG.	63'-9" TO 74'-1"	9	69'-6" AVG.	62'-7" TO 76'-5"	10	70'-11 1/2" AVG.	63'-2" TO 78'-9"	11	72'-4 1/2" AVG.
	AT4	#4	STR	27	35'-10" AVG.	13'-4" TO 58'-4"	26	37'-3" AVG.	15'-7" TO 58'-11"	25	38'-8 1/2" AVG.	17'-11" TO 59'-6"	23	39'-3 1/2" AVG.	20'-3" TO 58'-4"	22	40'-8 1/2" AVG.	22'-6" TO 58'-11"	21	42'-2" AVG.
	AT5	#5	STR	27	35'-10" AVG.	13'-4" TO 58'-4"	26	37'-3" AVG.	15'-7" TO 58'-11"	25	38'-8 1/2" AVG.	17'-11" TO 59'-6"	23	39'-3 1/2" AVG.	20'-3" TO 58'-4"	22	40'-8 1/2" AVG.	22'-6" TO 58'-11"	21	42'-2" AVG.

- ① INCLUDES 2'-6" LAP  
② QUANTITY SHOWN REPRESENTS TWO SETS.

APPROVED BY BRIDGE ENGINEER *Robert J. Nisch* DATE 4/09/09

OKLAHOMA DEPT. OF TRANSPORTATION  
BRIDGE STANDARD (ENGLISH)  
RCB CULVERTS - END SECTION DETAILS  
SINGLE CELL - 9'-0" HEIGHT - 30°  
SHEET NO. 1 OF 3

1999 SPECIFICATIONS

RCB-E1-H9-30-1

OOE

B-681E