

DESCRIPTION	REVISIONS	DATE

END SECTION PLAN

APRON REINFORCING

APRON BAR LIST

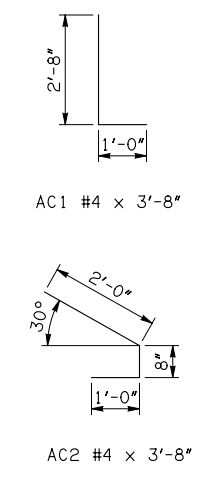
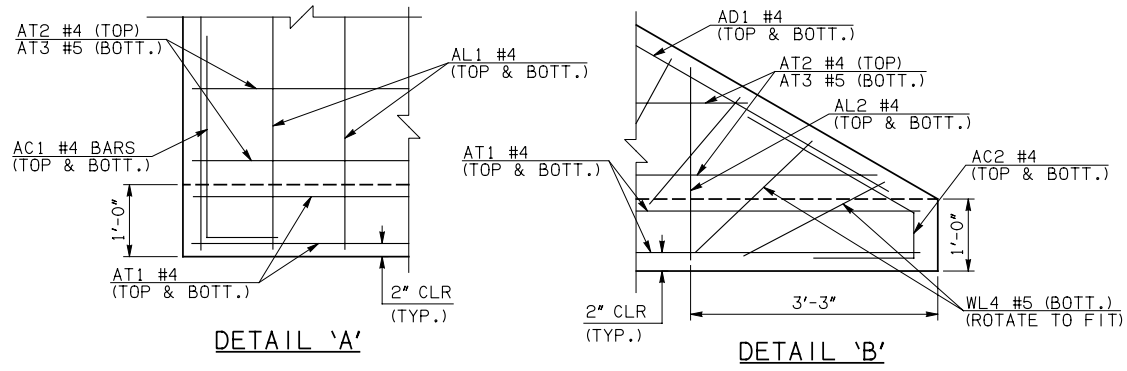
MARK	SIZE	FORM	ONE APRON SHOWN																	
			8' SPAN		10' SPAN		12' SPAN		14' SPAN		16' SPAN		18' SPAN		20' SPAN					
QTY.	LENGTH	REMARKS	QTY.	LENGTH	REMARKS	QTY.	LENGTH	REMARKS	QTY.	LENGTH	REMARKS	QTY.	LENGTH	REMARKS	QTY.	LENGTH	REMARKS			
AC1	#4	BNT	2	3'-8"		2	3'-8"		2	3'-8"		2	3'-8"		2	3'-8"		2	3'-8"	
AD1	#4	STR	2	57'-6"		2	57'-6"		2	57'-6"		2	57'-6"		2	57'-6"		2	57'-6"	
AL1	#4	STR	20	31'-9"		24	31'-9"		30	31'-9"		34	31'-9"		38	31'-9"		44	31'-9"	
AL2	#4	STR	92	15'-5 1/2" AVG.	2'-6" TO 28'-5"	92	15'-5 1/2" AVG.	2'-6" TO 28'-5"	92	15'-5 1/2" AVG.	2'-6" TO 28'-5"	92	15'-5 1/2" AVG.	2'-6" TO 28'-5"	92	15'-5 1/2" AVG.	2'-6" TO 28'-5"	92	15'-5 1/2" AVG.	2'-6" TO 28'-5"
AL3	#4	STR	4	29'-9"		4	29'-9"		4	29'-9"		4	29'-9"		4	29'-9"		4	29'-9"	
AT1	#4	STR	4	59'-9"		4	64'-6" (1)		4	66'-10" (1)		4	69'-2" (1)		4	71'-6" (1)		4	73'-9" (1)	
AT2	#4	STR	29	34'-9" AVG.	10'-6" TO 59'-0"	1	63'-9"		3	64'-4 1/2" AVG.	62'-8" TO 66'-1"	4	65'-10" AVG.	63'-3" TO 68'-5"	5	67'-3" AVG.	63'-9" TO 70'-9"	7	67'-10" AVG.	62'-8" TO 73'-0"
AT3	#5	STR	29	34'-9" AVG.	10'-6" TO 59'-0"	1	63'-9"		3	64'-4 1/2" AVG.	62'-8" TO 66'-1"	4	65'-10" AVG.	63'-3" TO 68'-5"	5	67'-3" AVG.	63'-9" TO 70'-9"	7	67'-10" AVG.	62'-8" TO 73'-0"
AT4	#4	STR	0			28	36'-2 1/2" AVG.	12'-10" TO 59'-7"	26	36'-9" AVG.	15'-1" TO 58'-5"	25	38'-2 1/2" AVG.	17'-5" TO 59'-0"	24	39'-8" AVG.	19'-9" TO 59'-7"	22	40'-2 1/2" AVG.	22'-0" TO 58'-5"
AT5	#5	STR	0			28	36'-2 1/2" AVG.	12'-10" TO 59'-7"	26	36'-9" AVG.	15'-1" TO 58'-5"	25	38'-2 1/2" AVG.	17'-5" TO 59'-0"	24	39'-8" AVG.	19'-9" TO 59'-7"	22	40'-2 1/2" AVG.	22'-0" TO 58'-5"

(1) INCLUDES 2'-6" LAP. NO LAPS REQUIRED FOR 8' SPAN.

NOTE: SEE END SECTION DETAILS SHEET NO. 2 OF 3 FOR VARIABLE REINFORCING QUANTITIES.

END SECTION VARIABLE DIMENSIONS

SPAN	W	A	B	C	CW	D	E	F	G	H	LW	R	SW
8'	10"	5'-0"	2'-2 1/2"	2'-11 1/2"	60'-1 1/4"	3'-2 1/4"	7'-9 1/2"	8'-7"	8'-9 3/4"	11'-8 3/4"	56'-5 3/4"	9'-8"	29'-3 1/4"
10'	12"	6'-0"	2'-6 1/2"	3'-8 1/4"	62'-5"	3'-7 1/4"	9'-5 1/2"	10'-5 1/2"	10'-4 3/4"	14'-5 1/4"	56'-1 3/4"	12'-0"	28'-11 1/4"
12'	12"	7'-0"	2'-11 1/2"	4'-1 1/4"	64'-8 3/4"	4'-0 1/2"	11'-0 1/2"	12'-0 1/4"	11'-11 1/2"	16'-9"	56'-1 3/4"	14'-0"	28'-11 1/4"
14'	13"	7'-0"	2'-4"	3'-8"	67'-0 1/4"	3'-5 1/2"	11'-8"	12'-6 1/2"	19'-3"	55'-11 3/4"	16'-2"	28'-9 1/4"	
16'	14"	8'-0"	2'-8 1/2"	4'-2 3/4"	69'-4"	3'-10 1/2"	13'-3 1/2"	14'-5 3/4"	14'-1 1/2"	21'-9"	55'-9 3/4"	18'-4"	28'-7 1/4"
18'	15"	8'-0"	2'-1"	3'-9 3/4"	71'-7 3/4"	3'-3 3/4"	13'-11"	15'-2 1/4"	14'-8 1/4"	24'-3"	55'-7 3/4"	20'-6"	28'-5 1/4"
20'	15"	9'-0"	2'-6"	4'-2 3/4"	73'-11 1/2"	3'-8 3/4"	15'-6"	16'-9 1/4"	16'-3 1/4"	26'-6 3/4"	55'-7 3/4"	22'-6"	28'-5 1/4"



APPROVED BY BRIDGE ENGINEER *Robert J. Nisch* DATE 4/09/09

OKLAHOMA DEPT. OF TRANSPORTATION  
BRIDGE STANDARD (ENGLISH)  
RCB CULVERTS - END SECTION DETAILS  
SINGLE CELL - 8'-0" HEIGHT - 30°  
SHEET NO. 1 OF 3

1999 SPECIFICATIONS | RCB-E1-H8-30-1 | OOE | B-678E