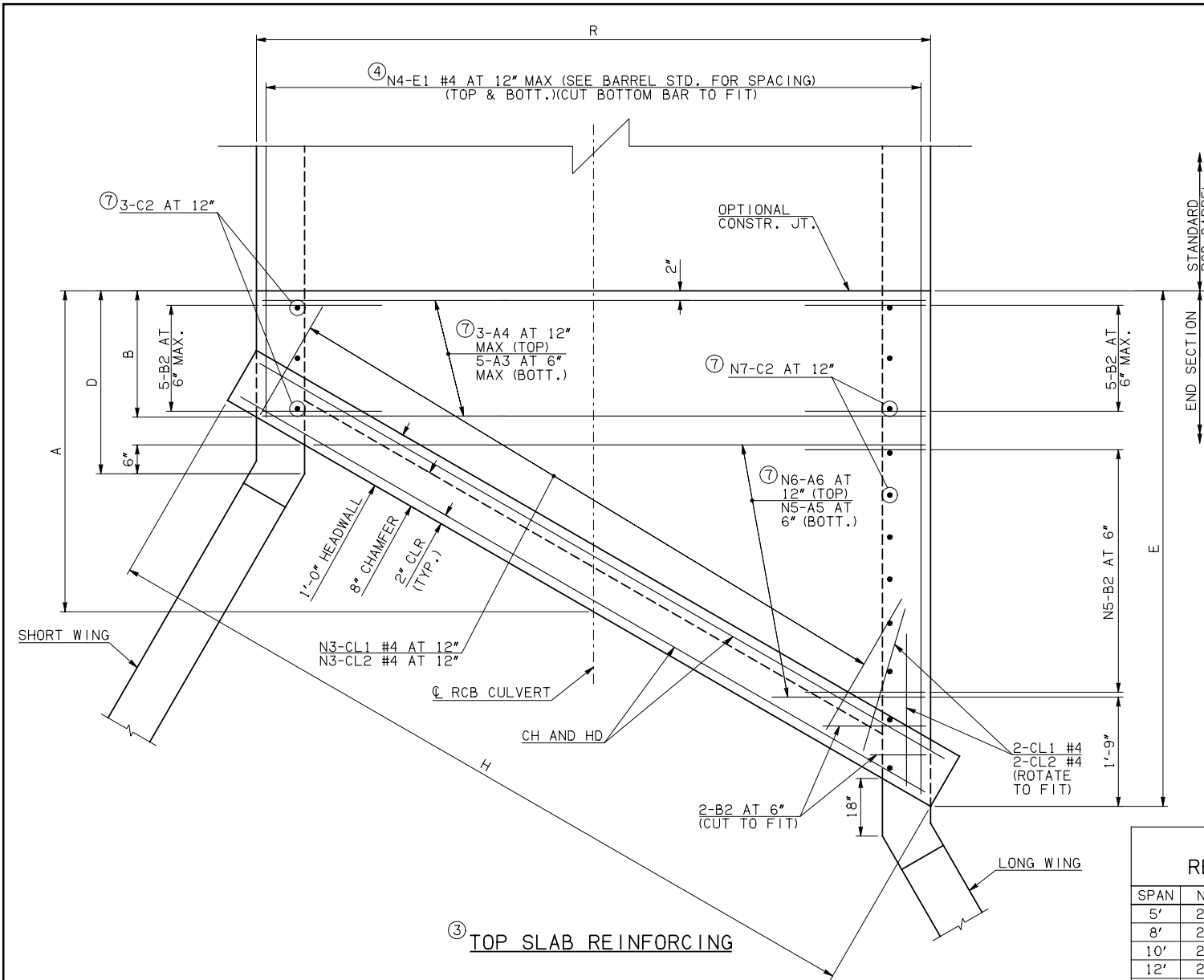
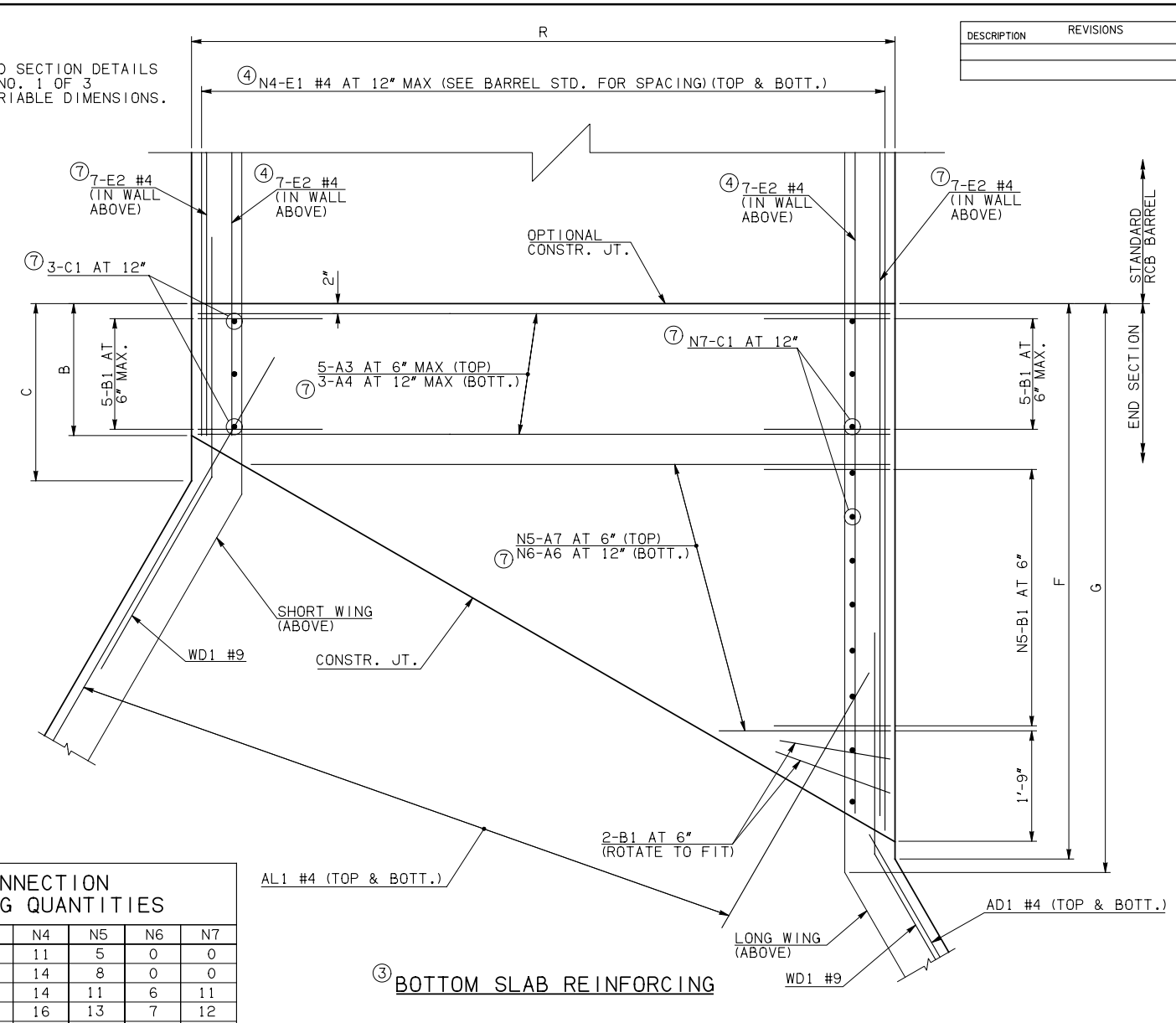


DESCRIPTION	REVISIONS	DATE



NOTE: SEE END SECTION DETAILS SHEET NO. 1 OF 3 FOR VARIABLE DIMENSIONS.



SPAN	N1	N2	N3	N4	N5	N6	N7
5'	26	0	6	11	5	0	0
8'	26	0	10	14	8	0	0
10'	26	0	12	14	11	6	11
12'	26	0	15	16	13	7	12
14'	1	25	17	18	16	8	13
16'	2	24	19	20	18	9	14
18'	4	22	22	22	21	11	16

END CONNECTION BAR LIST

MARK	FORM	ONE END CONNECTION SHOWN																											
		5' SPAN				8' SPAN				10' SPAN				12' SPAN				14' SPAN				16' SPAN				18' SPAN			
SIZE	QTY.	LENGTH	REMARKS	SIZE	QTY.	LENGTH	REMARKS	SIZE	QTY.	LENGTH	REMARKS	SIZE	QTY.	LENGTH	REMARKS	SIZE	QTY.	LENGTH	REMARKS	SIZE	QTY.	LENGTH	REMARKS	SIZE	QTY.	LENGTH	REMARKS		
A3	STR	#6	10	6'-4"		#7	10	9'-4"		#7	10	11'-8"		#7	10	13'-8"		#7	10	15'-10"		#8	10	18'-0"		#8	10	20'-2"	
A4	STR		0				0			#4	6	11'-8"		#4	6	13'-8"		#4	6	15'-10"		#4	6	18'-0"		#5	6	20'-2"	
A5	STR	#6	5	3'-1" AVG.	1'-4" TO 4'-10"	#7	8	4'-4 1/2" AVG.	1'-4" TO 7'-5"	#7	11	5'-8" AVG.	1'-4" TO 10'-0"	#7	13	6'-6 1/2" AVG.	1'-4" TO 11'-9"	#7	16	7'-10" AVG.	1'-4" TO 14'-4"	#8	18	8'-8 1/2" AVG.	1'-4" TO 16'-1"	#8	21	10'-0" AVG.	1'-4" TO 18'-8"
A6	STR		0				0			#4	12	6'-10" AVG.	2'-6" TO 11'-2"	#4	14	7'-8 1/2" AVG.	2'-6" TO 12'-11"	#4	16	8'-6 1/2" AVG.	2'-6" TO 14'-7"	#4	18	9'-5" AVG.	2'-6" TO 16'-4"	#5	22	11'-2" AVG.	2'-6" TO 19'-10"
A7	STR	#6	5	4'-2 1/2" AVG.	2'-6" TO 5'-11"	#7	8	5'-6 1/2" AVG.	2'-6" TO 8'-7"	#7	11	6'-10" AVG.	2'-6" TO 11'-2"	#7	13	7'-8 1/2" AVG.	2'-6" TO 12'-11"	#7	16	9'-0" AVG.	2'-6" TO 15'-6"	#8	18	9'-10 1/2" AVG.	2'-6" TO 17'-3"	#8	21	11'-2" AVG.	2'-6" TO 19'-10"
B1	BNT	#5	17	3'-2"		#5	20	3'-3"		#6	23	5'-3"		#6	25	5'-8"		#6	28	6'-3"		#6	30	6'-8"		#7	33	7'-7"	
B2	BNT	#5	17	8'-6"		#5	20	8'-7"		#6	23	10'-3"		#6	25	10'-7"		#6	28	11'-2"		#6	30	11'-7"		#7	33	11'-9"	
C1	STR		0				0			#4	14	2'-2"		#4	15	2'-3"		#4	16	2'-4"		#4	17	2'-7"		#4	19	2'-7"	
C2	STR		0				0			#4	14	7'-10"		#4	15	7'-11"		#4	16	8'-0"		#4	17	8'-3"		#4	19	8'-3"	
E1	STR	#4	22	3'-9" AVG.	1'-11" TO 5'-7"	#4	28	4'-9 1/2" AVG.	2'-1" TO 7'-6"	#4	56	5'-9 1/2" AVG.	2'-5" TO 9'-2"	#4	64	6'-9 1/2" AVG.	2'-10" TO 10'-9"	#4	72	6'-9" AVG.	2'-2" TO 11'-4"	#4	80	7'-9 1/2" AVG.	2'-7" TO 13'-0"	#4	88	7'-9" AVG.	1'-11" TO 13'-7"
E2	STR	#4	14	3'-7 1/2" AVG.	1'-11" AND 5'-4"	#4	14	4'-7 1/2" AVG.	2'-1" AND 7'-2"	#4	28	5'-7" AVG.	2'-5" AND 8'-9"	#4	28	6'-7" AVG.	2'-10" AND 10'-4"	#4	28	6'-6 1/2" AVG.	2'-2" AND 10'-11"	#4	28	7'-6 1/2" AVG.	2'-7" AND 12'-6"	#4	28	7'-6" AVG.	1'-11" AND 13'-1"

ITEM	UNIT	5' SPAN	8' SPAN	10' SPAN	12' SPAN	14' SPAN	16' SPAN	18' SPAN
CLASS AA CONCRETE	CY	43.40	48.80	54.20	59.50	64.00	72.70	77.20
REINFORCING STEEL	LB	6570.00	7220.00	8300.00	8900.00	9530.00	10570.00	11920.00

NOTE: QUANTITIES ABOVE ARE FOR ONE END SECTION, WHICH IS COMPRISED OF ONE END CONNECTION, ONE HEADWALL, ONE APRON, AND TWO WINGWALLS.

- NOTES: ② QUANTITY SHOWN REPRESENTS TWO SETS.  
 ③ FOR FURTHER INFORMATION REGARDING END SECTION BARS A, B, C, E1, AND E2, REFER TO RCB CULVERT - BARREL DETAILS.  
 ④ LENGTHS OF E1 & E2 BARS SHOWN ARE ADDITIONAL LENGTHS REQUIRED FOR THE END SECTION. LAP SPLICES, AS REQUIRED, SHALL BE IN ACCORDANCE WITH RCB BARREL STANDARD NOTES.

- ⑤ FOR SPANS 10' AND LONGER, 4-SETS OF N4-E1 BARS REQUIRED. FOR 5' AND 8' SPANS, 2-SETS OF N4-E1 BARS REQUIRED.  
 ⑥ QUANTITY SHOWN REPRESENTS 2-SETS OF E2 BARS WITH LENGTHS AS SHOWN CORRESPONDING TO SHORT EXTERIOR WALL AND LONG EXTERIOR WALL.  
 ⑦ NOT PRESENT IN 5' OR 8' SPANS.

APPROVED BY BRIDGE ENGINEER *Robert J. Muech* DATE 4/09/09

**OKLAHOMA DEPT. OF TRANSPORTATION**  
**BRIDGE STANDARD (ENGLISH)**  
 RCB CULVERTS - END SECTION DETAILS  
 SINGLE CELL - 7'-0" HEIGHT - 30°  
 SHEET NO. 2 OF 3

1999 SPECIFICATIONS RCB-E1-H7-30-2 OOE B-676E