

DESCRIPTION	REVISIONS	DATE

END SECTION PLAN

APRON REINFORCING

APRON BAR LIST

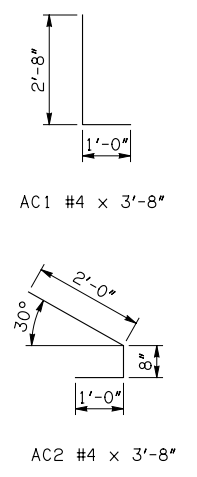
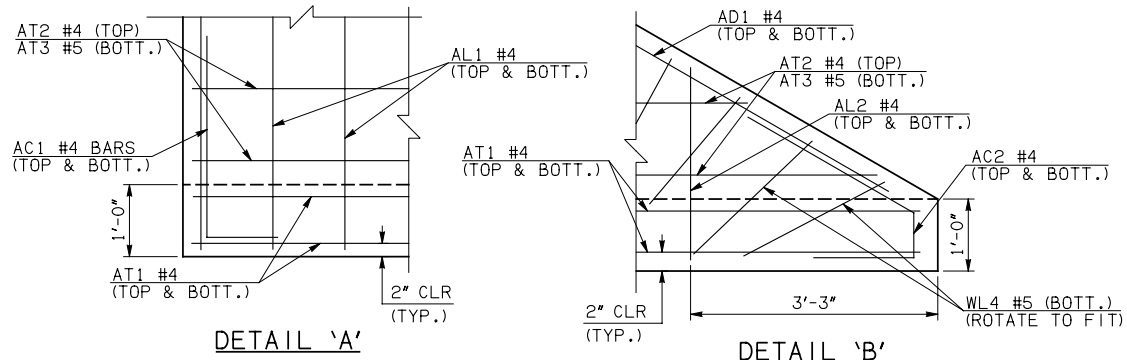
ONE APRON SHOWN

MARK	SIZE	FORM	5' SPAN			8' SPAN			10' SPAN			12' SPAN			14' SPAN			16' SPAN			18' SPAN		
			QTY.	LENGTH	REMARKS	QTY.	LENGTH	REMARKS	QTY.	LENGTH	REMARKS	QTY.	LENGTH	REMARKS	QTY.	LENGTH	REMARKS	QTY.	LENGTH	REMARKS	QTY.	LENGTH	REMARKS
AC1	#4	BNT	2	3'-8"		2	3'-8"		2	3'-8"		2	3'-8"		2	3'-8"		2	3'-8"		2	3'-8"	
AD1	#4	STR	2	51'-6"		2	51'-6"		2	51'-6"		2	51'-6"		2	51'-6"		2	51'-6"		2	51'-6"	
AL1	#4	STR	12	28'-9"		20	28'-9"		24	28'-9"		30	28'-9"		34	28'-9"		38	28'-9"		44	28'-9"	
AL2	#4	STR	82	14'-0 1/2" AVG.	2'-6" TO 25'-7"	82	14'-0 1/2" AVG.	2'-6" TO 25'-7"	82	14'-0 1/2" AVG.	2'-6" TO 25'-7"	82	14'-0 1/2" AVG.	2'-6" TO 25'-7"	82	14'-0 1/2" AVG.	2'-6" TO 25'-7"	82	14'-0 1/2" AVG.	2'-6" TO 25'-7"	82	14'-0 1/2" AVG.	2'-6" TO 25'-7"
AL3	#4	STR	4	26'-9"		4	26'-9"		4	26'-9"		4	26'-9"		4	26'-9"		4	26'-9"		4	26'-9"	
AT1	#4	STR	4	54'-6"		4	54'-6"		4	54'-6"		4	54'-6"		4	54'-6"		4	54'-6"		4	54'-6"	
AT2	#4	STR	26	28'-8" AVG.	7'-0" TO 50'-4"	26	32'-1 1/2" AVG.	10'-6" TO 53'-9"	26	34'-5 1/2" AVG.	12'-10" TO 56'-1"	26	36'-9" AVG.	15'-1" TO 58'-5"	1	63'-3"		2	64'-7 1/2" AVG.	63'-9" TO 65'-6"	4	65'-3" AVG.	62'-8" TO 67'-10"
AT3	#5	STR	26	28'-8" AVG.	7'-0" TO 50'-4"	26	32'-1 1/2" AVG.	10'-6" TO 53'-9"	26	34'-5 1/2" AVG.	12'-10" TO 56'-1"	26	36'-9" AVG.	15'-1" TO 58'-5"	1	63'-3"		2	64'-7 1/2" AVG.	63'-9" TO 65'-6"	4	65'-3" AVG.	62'-8" TO 67'-10"
AT4	#4	STR	0			0			0			0			25	38'-2 1/2" AVG.	17'-5" TO 59'-0"	24	39'-8" AVG.	19'-9" TO 59'-7"	22	40'-2 1/2" AVG.	22'-0" TO 58'-5"
AT5	#5	STR	0			0			0			0			25	38'-2 1/2" AVG.	17'-5" TO 59'-0"	24	39'-8" AVG.	19'-9" TO 59'-7"	22	40'-2 1/2" AVG.	22'-0" TO 58'-5"

① INCLUDES 2'-6" LAP. NO LAPS REQUIRED FOR 5', 8', 10', OR 12' SPANS.
 ② QUANTITY SHOWN REPRESENTS TWO SETS. NOTE: SEE END SECTION DETAILS SHEET NO. 2 OF 3 FOR VARIABLE REINFORCING QUANTITIES.

END SECTION VARIABLE DIMENSIONS

SPAN	W	A	B	C	CW	D	E	F	G	H	LW	R	SW
5'	10"	4'-0"	2'-1"	2'-10"	51'-5 1/4"	3'-0 3/4"	5'-11"	6'-8 3/4"	6'-11 1/4"	8'-3 1/4"	50'-5 3/4"	6'-8"	26'-3 1/4"
8'	10"	5'-0"	2'-2 1/2"	2'-11 1/2"	54'-10 3/4"	3'-2 1/4"	7'-9 1/2"	8'-7"	8'-9 3/4"	11'-8 3/4"	50'-5 3/4"	9'-8"	26'-3 1/4"
10'	12"	6'-0"	2'-6 1/2"	3'-8 1/4"	57'-2 1/2"	3'-7 1/4"	9'-5 1/2"	10'-5 1/2"	10'-4 3/4"	14'-5 1/4"	50'-1 3/4"	12'-0"	25'-11 1/4"
12'	12"	7'-0"	2'-11 1/2"	4'-1 1/4"	59'-6 1/4"	4'-0 1/2"	11'-0 1/2"	12'-0 1/4"	11'-11 1/2"	16'-9"	50'-1 3/4"	14'-0"	25'-11 1/4"
14'	13"	7'-0"	2'-4"	3'-8"	61'-10"	3'-5 1/2"	11'-8"	12'-9"	12'-6 1/2"	19'-3"	49'-11 3/4"	16'-2"	25'-9 1/4"
16'	14"	8'-0"	2'-8 1/2"	4'-2 3/4"	64'-1 3/4"	3'-10 1/2"	13'-3 1/2"	14'-5 3/4"	14'-1 1/2"	21'-9"	49'-9 3/4"	18'-4"	25'-7 1/4"
18'	15"	8'-0"	2'-1"	3'-9 3/4"	66'-5 1/2"	3'-3 3/4"	13'-11"	15'-2 1/4"	14'-8 1/4"	24'-3"	49'-7 3/4"	20'-6"	25'-5 1/4"



APPROVED BY BRIDGE ENGINEER *Robert J. Nisch* DATE 4/09/09

OKLAHOMA DEPT. OF TRANSPORTATION
 BRIDGE STANDARD (ENGLISH)
 RCB CULVERTS - END SECTION DETAILS
 SINGLE CELL - 7'-0" HEIGHT - 30°
 SHEET NO. 1 OF 3

1999 SPECIFICATIONS RCB-E1-H7-30-1 OOE B-675E