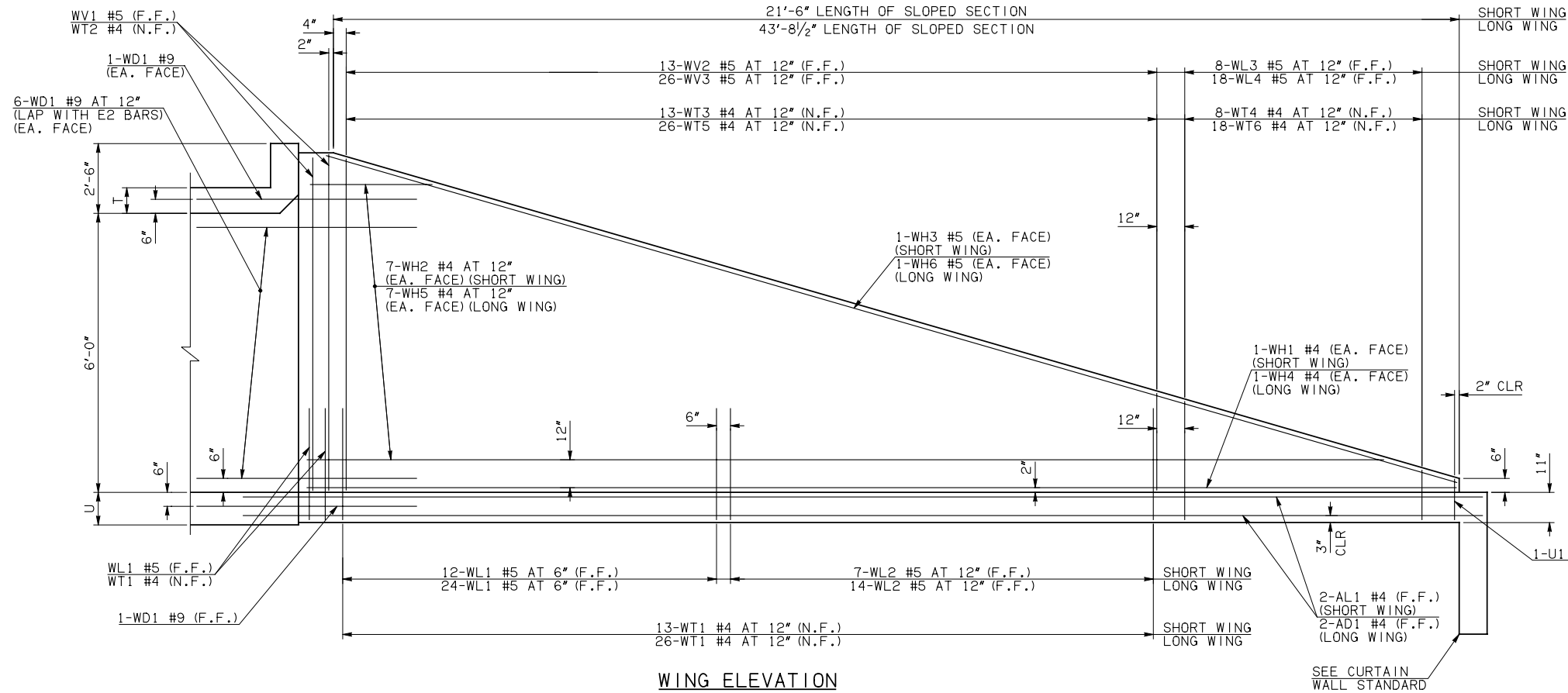
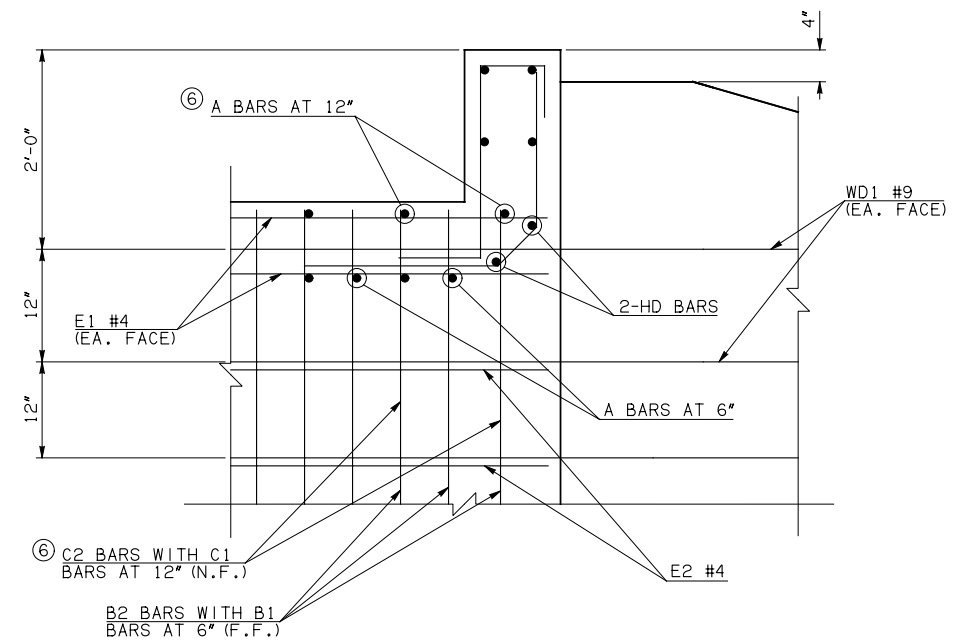


DESCRIPTION	REVISIONS	DATE

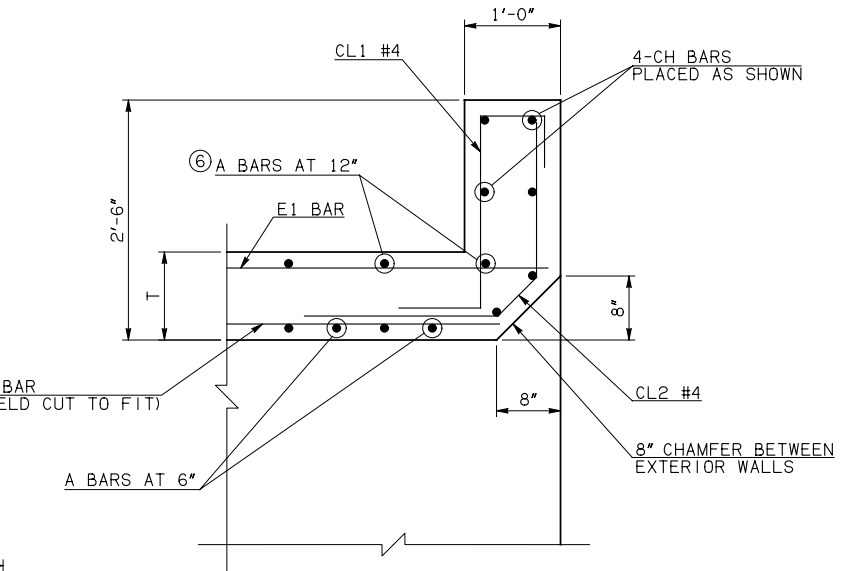


NOTE: F.F. = FAR FACE
N.F. = NEAR FACE

WING ELEVATION



HEADWALL DETAIL AT EXTERIOR WALL

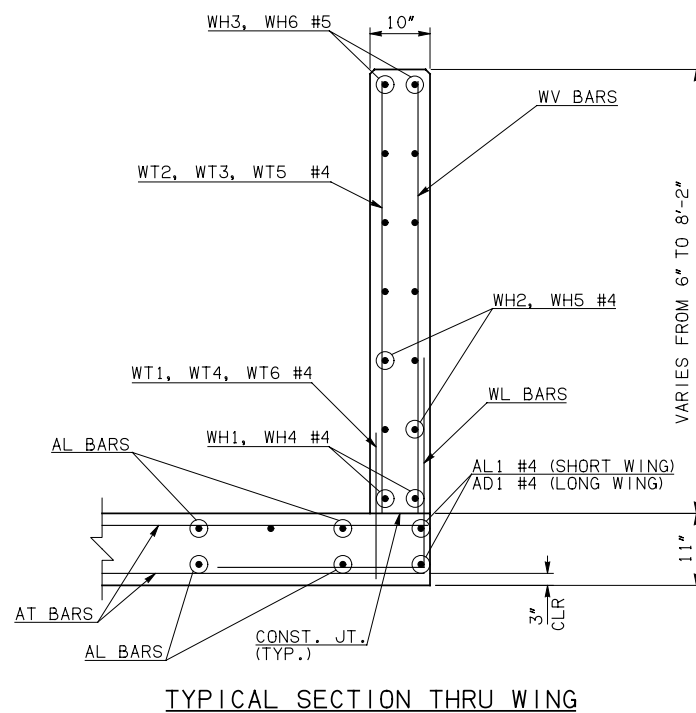


HEADWALL DETAIL AT MIDSPAN

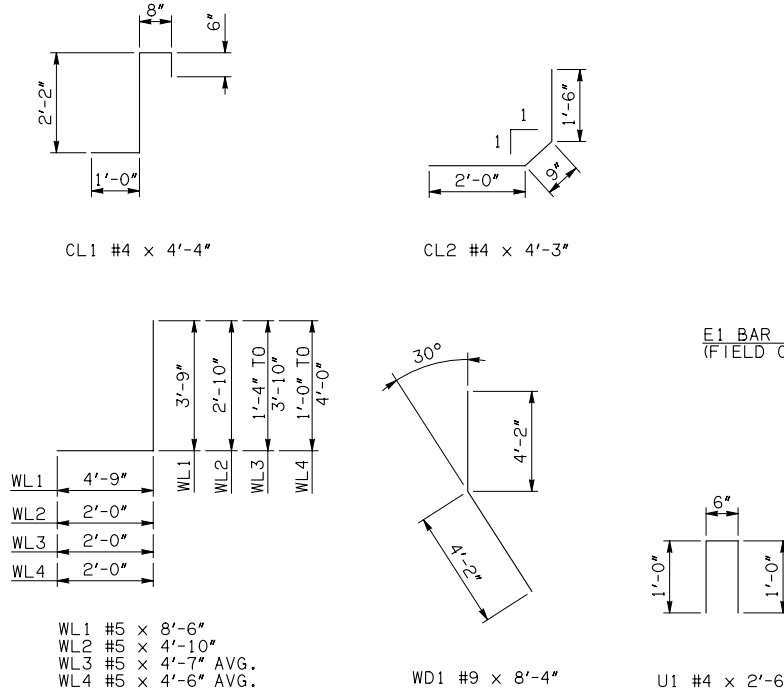
DIMENSION SHOWN NORMAL TO HEADWALL

NOTES:

- QUANTITY SHOWN REPRESENTS TWO SETS.
- FOR FURTHER INFORMATION REGARDING END SECTION BARS A, B, C, E1, AND E2, REFER TO RCB CULVERT - BARREL DETAILS.
- NOT PRESENT IN 6' OR 8' SPANS.



TYPICAL SECTION THRU WING



WINGWALL BAR LIST (LONG AND SHORT WING INCLUDED)					
MARK	SIZE	QTY.	FORM	LENGTH	REMARKS
WD1	#9	30	BNT	8'-4"	
WH1	#4	2	STR	22'-4"	
WH2	#4	14	STR	11'-8" AVG.	3'-3" TO 20'-1"
WH3	#5	2	STR	22'-7"	
WH4	#4	2	STR	44'-6"	
WH5	#4	14	STR	22'-9 1/2" AVG.	5'-8" TO 39'-11"
WH6	#5	2	STR	44'-2"	
WL1	#5	40	BNT	8'-6"	
WL2	#5	21	BNT	4'-10"	
WL3	#5	8	BNT	4'-7" AVG.	3'-4" TO 5'-10"
WL4	#5	18	BNT	4'-6" AVG.	3'-0" TO 6'-0"
WT1	#4	44	STR	2'-10"	
WT2	#4	5	STR	8'-0"	
WT3	#4	13	STR	5'-8 1/2" AVG.	3'-7" TO 7'-10"
WT4	#4	8	STR	2'-7" AVG.	1'-4" TO 3'-10"
WT5	#4	26	STR	5'-8 1/2" AVG.	3'-6" TO 7'-11"
WT6	#4	18	STR	2'-6" AVG.	1'-0" TO 4'-0"
WV1	#5	4	STR	8'-0"	
WV2	#5	13	STR	5'-8 1/2" AVG.	3'-7" TO 7'-10"
WV3	#5	26	STR	5'-8 1/2" AVG.	3'-6" TO 7'-11"
U1	#4	2	BNT	2'-6"	

HEADWALL BAR LIST

ONE HEADWALL SHOWN																			
MARK	FORM	6' SPAN			8' SPAN			10' SPAN			12' SPAN			14' SPAN			16' SPAN		
		SIZE	QTY.	LENGTH	SIZE	QTY.	LENGTH	SIZE	QTY.	LENGTH	SIZE	QTY.	LENGTH	SIZE	QTY.	LENGTH	SIZE	QTY.	LENGTH
CH	STR	#4	4	8'-10"	#4	4	11'-4"	#4	4	14'-1"	#4	4	16'-4"	#4	4	18'-8"	#5	4	21'-4"
CL1	BNT	#4	9	4'-4"	#4	12	4'-4"	#4	14	4'-4"	#4	17	4'-4"	#4	19	4'-4"	#4	21	4'-4"
CL2	BNT	#4	9	4'-3"	#4	12	4'-3"	#4	14	4'-3"	#4	17	4'-3"	#4	19	4'-3"	#4	21	4'-3"
HD	STR	#6	2	8'-10"	#6	2	11'-4"	#8	2	14'-1"	#8	2	16'-4"	#8	2	18'-8"	#9	2	21'-4"

APPROVED BY BRIDGE ENGINEER *Robert J. Nisch* DATE 4/09/09

OKLAHOMA DEPT. OF TRANSPORTATION
BRIDGE STANDARD (ENGLISH)
RCB CULVERTS - END SECTION DETAILS
SINGLE CELL - 6'-0" HEIGHT - 30°
SHEET NO. 3 OF 3