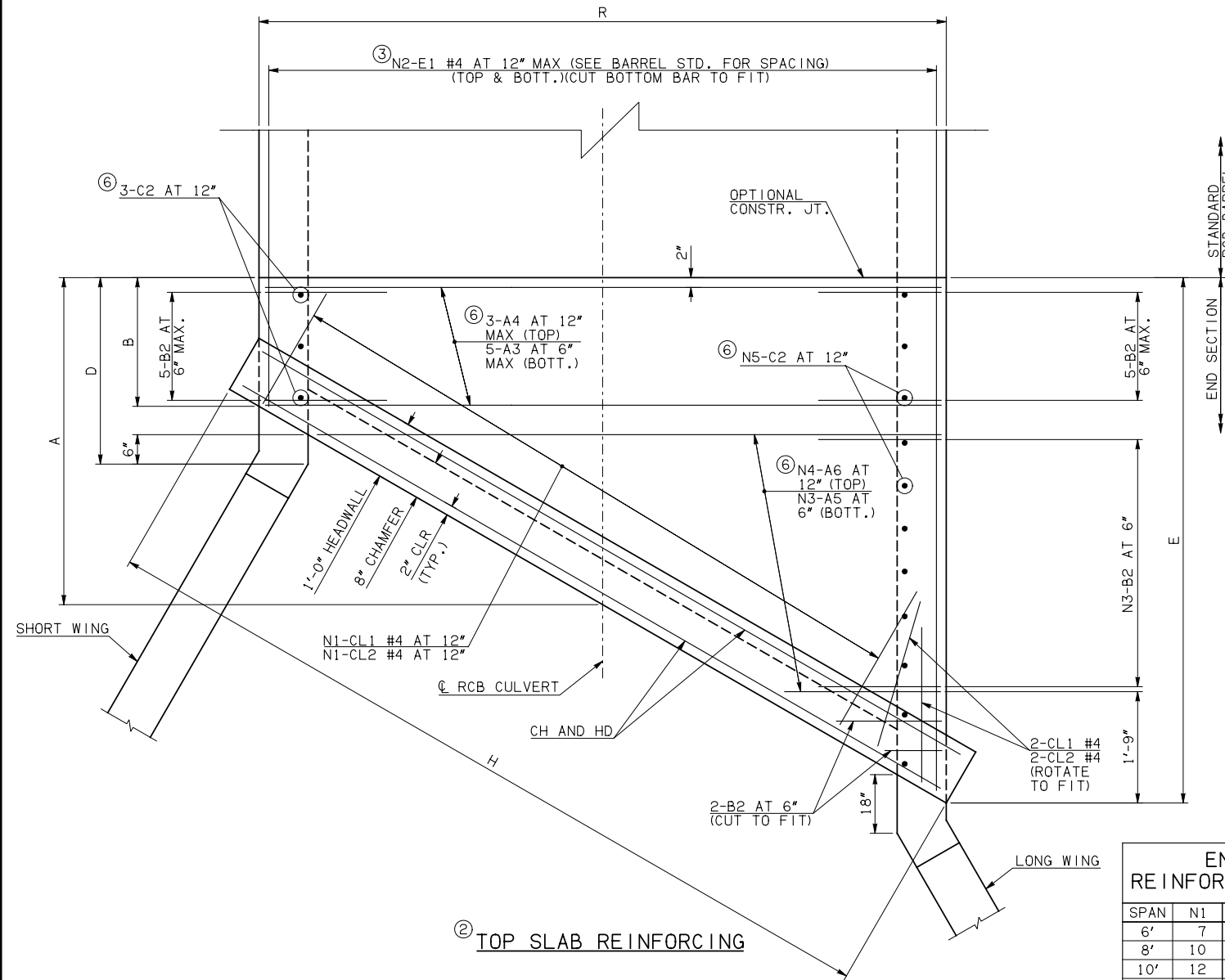
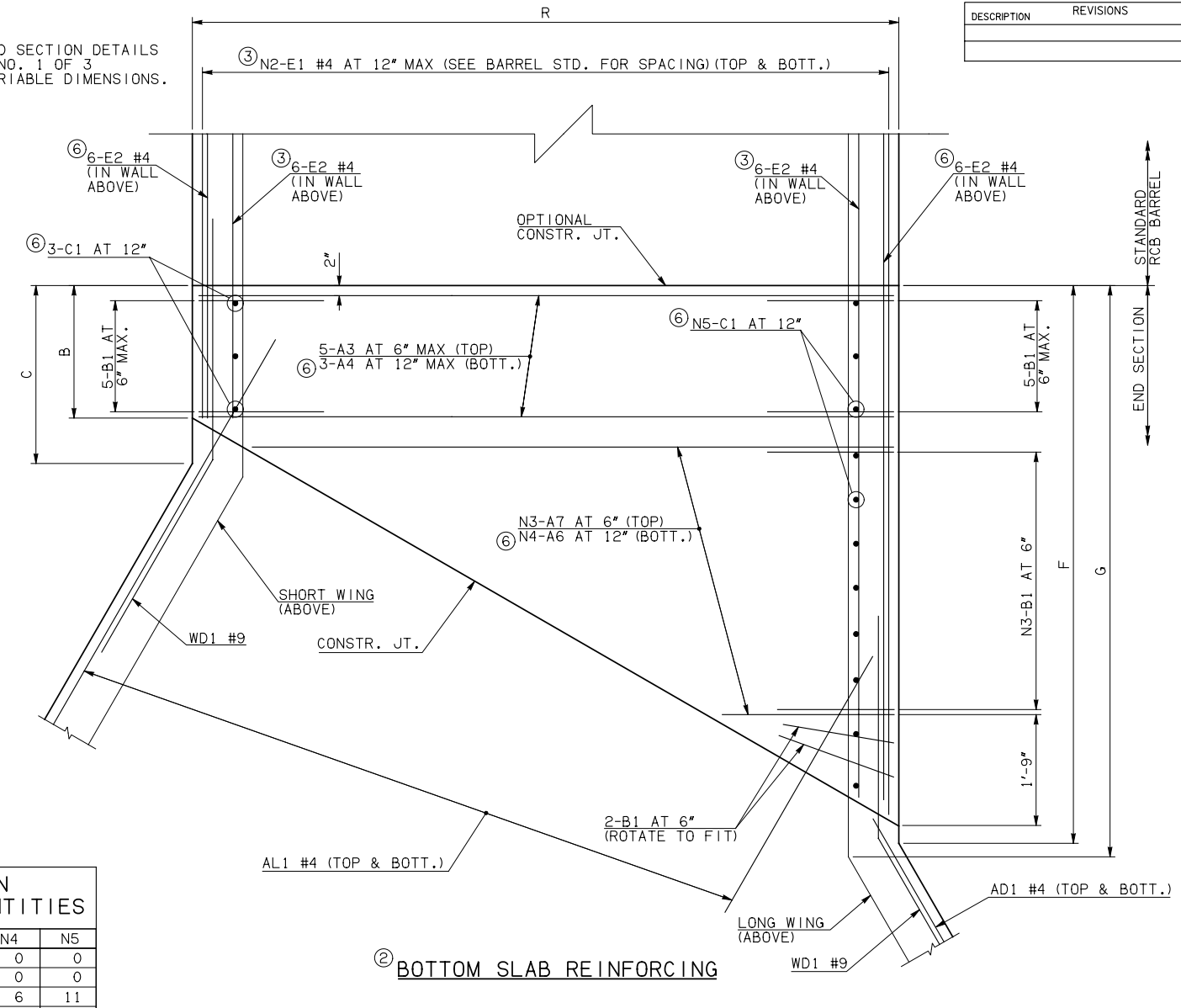


DESCRIPTION	REVISIONS	DATE



NOTE: SEE END SECTION DETAILS SHEET NO. 1 OF 3 FOR VARIABLE DIMENSIONS.



SPAN	N1	N2	N3	N4	N5
6'	7	12	6	0	0
8'	10	14	8	0	0
10'	12	14	11	6	11
12'	15	16	13	7	12
14'	17	18	15	8	13
16'	19	20	18	9	14

END CONNECTION BAR LIST

ONE END CONNECTION SHOWN

MARK	FORM	6' SPAN		8' SPAN		10' SPAN		12' SPAN		14' SPAN		16' SPAN	
		SIZE	QTY.	LENGTH	REMARKS	SIZE	QTY.	LENGTH	REMARKS	SIZE	QTY.	LENGTH	REMARKS
A3	STR	#6	10	7'-2"		#7	10	9'-4"		#7	10	11'-8"	
A4	STR		0				0			#4	6	11'-8"	
A5	STR	#6	6	3'-6" AVG.	1'-4" TO 5'-8"	#7	8	4'-4 1/2" AVG.	1'-4" TO 7'-5"	#7	11	5'-8" AVG.	1'-4" TO 10'-0"
A6	STR		0				0			#4	12	6'-10" AVG.	2'-6" TO 11'-2"
A7	STR	#6	6	4'-8" AVG.	2'-6" TO 6'-10"	#7	8	5'-6 1/2" AVG.	2'-6" TO 8'-7"	#7	11	6'-10" AVG.	2'-6" TO 11'-2"
B1	BNT	#4	18	2'-8"		#5	20	3'-3"		#6	23	5'-3"	
B2	BNT	#4	18	7'-4"		#5	20	7'-7"		#6	23	9'-3"	
C1	STR		0				0			#4	14	2'-2"	
C2	STR		0				0			#4	14	6'-10"	
E1	STR	#4	24	4'-9" AVG.	2'-8" TO 6'-10"	#4	28	4'-9 1/2" AVG.	2'-1" TO 7'-6"	#4	56	5'-9 1/2" AVG.	2'-5" TO 9'-2"
E2	STR	#4	12	4'-7 1/2" AVG.	2'-8" AND 6'-7"	#4	12	4'-7 1/2" AVG.	2'-1" AND 7'-2"	#4	24	5'-7" AVG.	2'-5" AND 8'-9"

QUANTITIES

ITEM	UNIT	6' SPAN	8' SPAN	10' SPAN	12' SPAN	14' SPAN	16' SPAN
CLASS AA CONCRETE	CY	37.30	40.50	45.50	50.50	54.30	63.10
REINFORCING STEEL	LB	5260.00	5790.00	6820.00	7390.00	7870.00	8990.00

NOTE: QUANTITIES ABOVE ARE FOR ONE END SECTION, WHICH IS COMPRISED OF ONE END CONNECTION, ONE HEADWALL, ONE APRON, AND TWO WINGWALLS.

NOTES: ① QUANTITY SHOWN REPRESENTS TWO SETS.

② FOR FURTHER INFORMATION REGARDING END SECTION BARS A, B, C, E1, AND E2, REFER TO RCB CULVERT - BARREL DETAILS.

③ LENGTHS OF E1 & E2 BARS SHOWN ARE ADDITIONAL LENGTHS REQUIRED FOR THE END SECTION. LAP SPLICES, AS REQUIRED, SHALL BE IN ACCORDANCE WITH RCB BARREL STANDARD NOTES.

④ FOR SPANS 10' AND LONGER, 4-SETS OF N2-E1 BARS REQUIRED. FOR 6' AND 8' SPANS, 2-SETS OF N2-E1 BARS REQUIRED.

⑤ QUANTITY SHOWN REPRESENTS 2-SETS OF E2 BARS WITH LENGTHS AS SHOWN CORRESPONDING TO SHORT EXTERIOR WALL AND LONG EXTERIOR WALL.

⑥ NOT PRESENT IN 6' OR 8' SPANS.

APPROVED BY BRIDGE ENGINEER

Debra J. Nisch

DATE 4/09/09

OKLAHOMA DEPT. OF TRANSPORTATION
BRIDGE STANDARD (ENGLISH)
RCB CULVERTS - END SECTION DETAILS
SINGLE CELL - 6'-0" HEIGHT - 30°
SHEET NO. 2 OF 3

1999 SPECIFICATIONS

RCB-E1-H6-30-2

OOE

B-673E