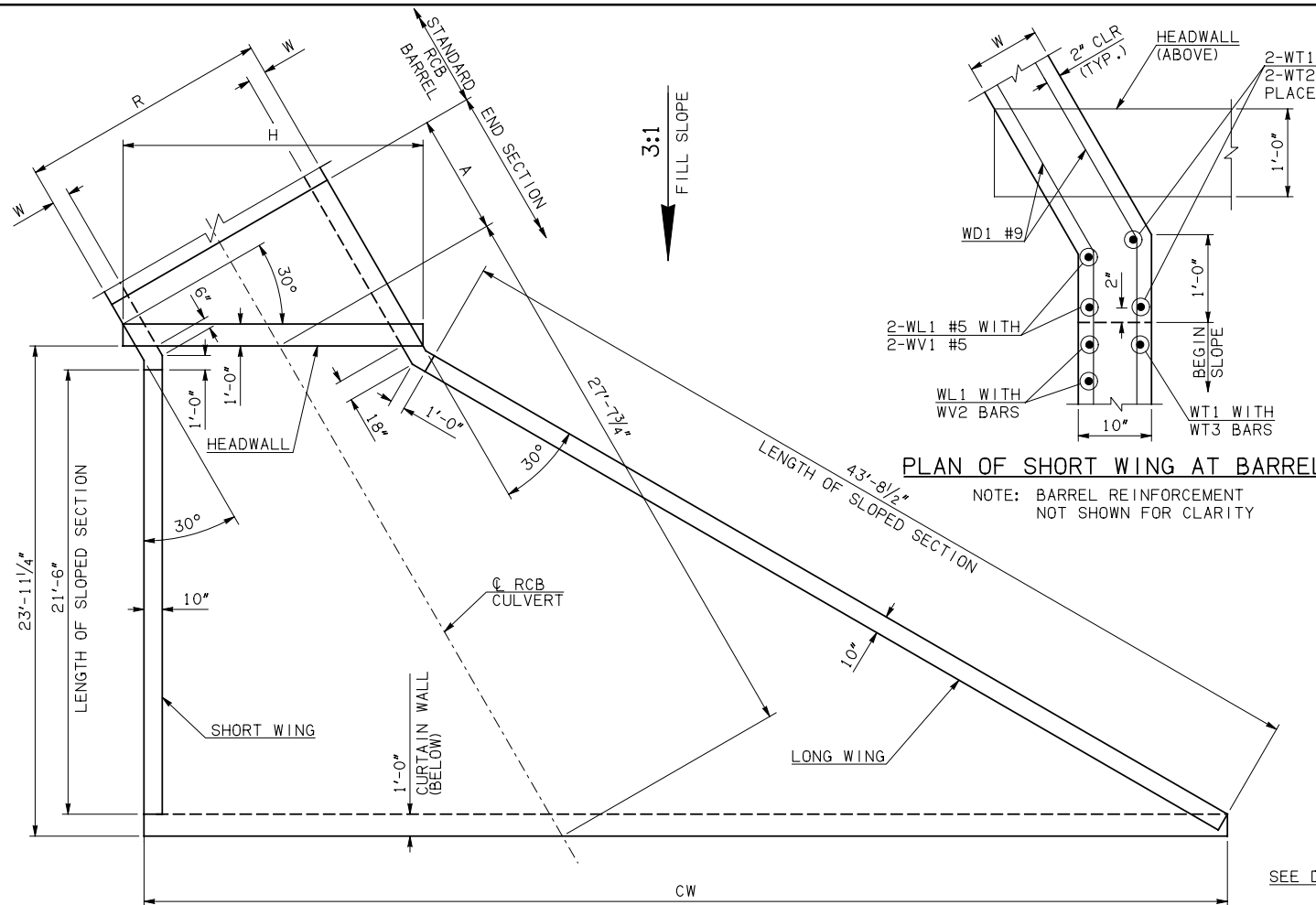


DESCRIPTION	REVISIONS	DATE



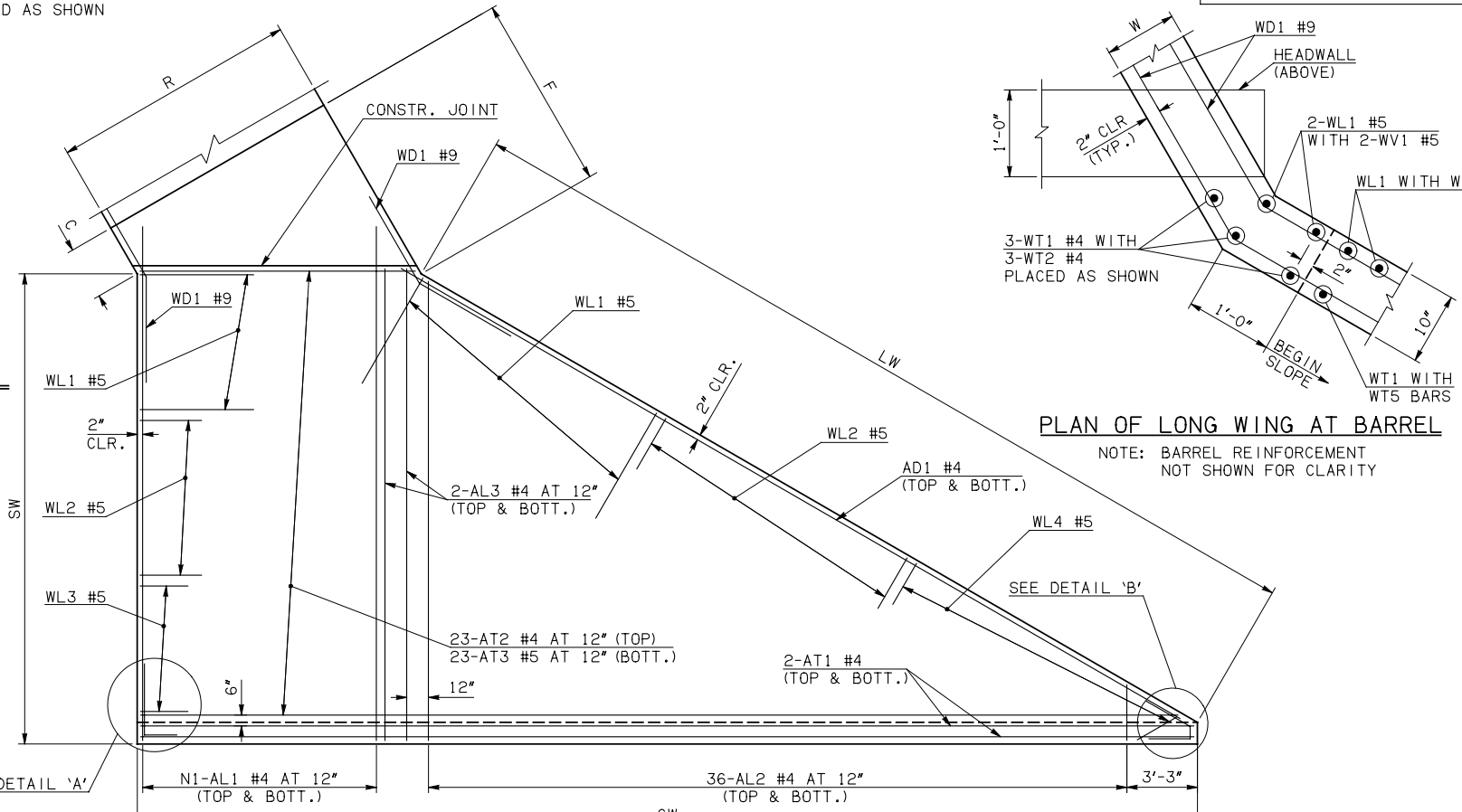
END SECTION PLAN

NOTE: SEE END SECTION DETAILS SHEET NO. 2 OF 3 FOR VARIABLE REINFORCING QUANTITIES.

END SECTION VARIABLE DIMENSIONS													
SPAN	W	A	B	C	CW	D	E	F	G	H	LW	SW	
6'	9"	5'-0"	2'-10"	3'-4 ³ / ₄ "	47'-4 ³ / ₄ "	3'-9 ¹ / ₄ "	7'-2"	7'-10 ¹ / ₄ "	8'-2 ³ / ₄ "	9'-2 ³ / ₄ "	44'-7 ³ / ₄ "	7'-6"	23'-5 ¹ / ₄ "
8'	10"	5'-0"	2'-2 ¹ / ₂ "	2'-11 ¹ / ₂ "	49'-8 ¹ / ₂ "	3'-2 ¹ / ₄ "	7'-9 ¹ / ₂ "	8'-7"	8'-9 ³ / ₄ "	11'-8 ³ / ₄ "	44'-5 ³ / ₄ "	9'-8"	23'-3 ¹ / ₄ "
10'	12"	6'-0"	2'-6 ¹ / ₂ "	3'-8 ¹ / ₄ "	52'-0 ¹ / ₄ "	3'-7 ¹ / ₄ "	9'-5 ¹ / ₂ "	10'-5 ¹ / ₂ "	10'-4 ³ / ₄ "	14'-5 ¹ / ₄ "	44'-1 ³ / ₄ "	12'-0"	22'-11 ¹ / ₄ "
12'	12"	7'-0"	2'-11 ¹ / ₂ "	4'-1 ¹ / ₄ "	54'-4"	4'-0 ¹ / ₂ "	11'-0 ¹ / ₂ "	12'-0 ¹ / ₄ "	11'-11 ¹ / ₂ "	16'-9"	44'-1 ³ / ₄ "	14'-0"	22'-11 ¹ / ₄ "
14'	12"	7'-0"	2'-4 ¹ / ₂ "	3'-6 ¹ / ₄ "	56'-7 ³ / ₄ "	3'-5 ¹ / ₂ "	11'-7 ¹ / ₂ "	12'-7 ¹ / ₄ "	12'-6 ¹ / ₂ "	19'-0 ³ / ₄ "	44'-1 ³ / ₄ "	16'-0"	22'-11 ¹ / ₄ "
16'	14"	8'-0"	2'-8 ¹ / ₂ "	4'-2 ³ / ₄ "	58'-11 ¹ / ₄ "	3'-10 ¹ / ₂ "	13'-3 ¹ / ₂ "	14'-5 ³ / ₄ "	14'-1 ¹ / ₂ "	21'-9"	43'-9 ³ / ₄ "	18'-4"	22'-7 ¹ / ₄ "

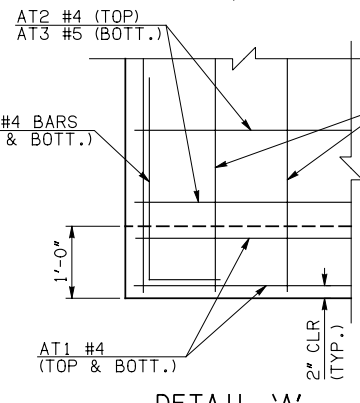
PLAN OF SHORT WING AT BARREL

NOTE: BARREL REINFORCEMENT NOT SHOWN FOR CLARITY



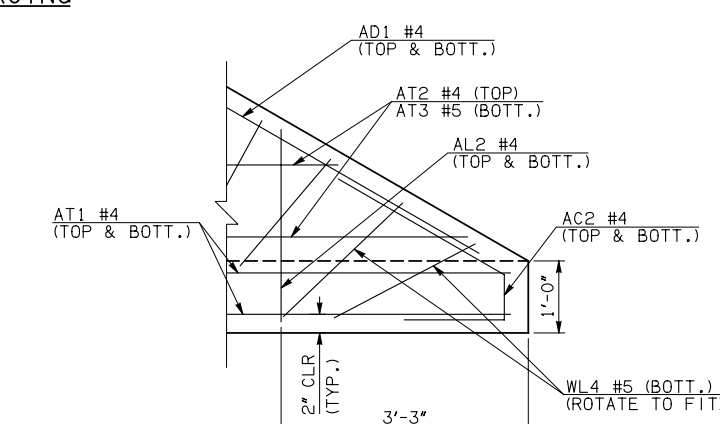
PLAN OF LONG WING AT BARREL

NOTE: BARREL REINFORCEMENT NOT SHOWN FOR CLARITY



DETAIL 'A'

APRON REINFORCING



DETAIL 'B'

APRON BAR LIST

ONE APRON SHOWN

MARK	SIZE	FORM	6' SPAN			8' SPAN			10' SPAN			12' SPAN			14' SPAN			16' SPAN		
			QTY.	LENGTH	REMARKS	QTY.	LENGTH	REMARKS	QTY.	LENGTH	REMARKS	QTY.	LENGTH	REMARKS	QTY.	LENGTH	REMARKS	QTY.	LENGTH	REMARKS
AC1	#4	BNT	2	3'-8"		2	3'-8"		2	3'-8"		2	3'-8"		2	3'-8"		2	3'-8"	
AC2	#4	BNT	2	3'-8"		2	3'-8"		2	3'-8"		2	3'-8"		2	3'-8"		2	3'-8"	
AD1	#4	STR	2	45'-6"		2	45'-6"		2	45'-6"		2	45'-6"		2	45'-6"		2	45'-6"	
AL1	#4	STR	14	25'-9"		20	25'-9"		24	25'-9"		30	25'-9"		34	25'-9"		38	25'-9"	
AL2	#4	STR	72	12'-7" AVG.	2'-6" TO 22'-8"	72	12'-7" AVG.	2'-6" TO 22'-8"	72	12'-7" AVG.	2'-6" TO 22'-8"	72	12'-7" AVG.	2'-6" TO 22'-8"	72	12'-7" AVG.	2'-6" TO 22'-8"	72	12'-7" AVG.	2'-6" TO 22'-8"
AL3	#4	STR	4	23'-9"		4	23'-9"		4	23'-9"		4	23'-9"		4	23'-9"		4	23'-9"	
AT1	#4	STR	4	47'-0"		4	49'-4"		4	51'-8"		4	53'-11"		4	56'-3"		4	58'-7"	
AT2	#4	STR	23	27'-2 ¹ / ₂ " AVG.	8'-2" TO 46'-3"	23	29'-6 ¹ / ₂ " AVG.	10'-6" TO 48'-7"	23	31'-10 ¹ / ₂ " AVG.	12'-10" TO 50'-11"	23	34'-2" AVG.	15'-1" TO 53'-3"	23	36'-5 ¹ / ₂ " AVG.	17'-5" TO 55'-6"	23	38'-9 ¹ / ₂ " AVG.	19'-9" TO 57'-10"
AT3	#5	STR	23	27'-2 ¹ / ₂ " AVG.	8'-2" TO 46'-3"	23	29'-6 ¹ / ₂ " AVG.	10'-6" TO 48'-7"	23	31'-10 ¹ / ₂ " AVG.	12'-10" TO 50'-11"	23	34'-2" AVG.	15'-1" TO 53'-3"	23	36'-5 ¹ / ₂ " AVG.	17'-5" TO 55'-6"	23	38'-9 ¹ / ₂ " AVG.	19'-9" TO 57'-10"

① QUANTITY SHOWN REPRESENTS TWO SETS.

APPROVED BY BRIDGE ENGINEER *Robert J. Nusch* DATE 4/09/09

OKLAHOMA DEPT. OF TRANSPORTATION
BRIDGE STANDARD (ENGLISH)
 RCB CULVERTS - END SECTION DETAILS
 SINGLE CELL - 6'-0" HEIGHT - 30°
 SHEET NO. 1 OF 3

1999 SPECIFICATIONS RCB-E1-H6-30-1 OOE B-672E