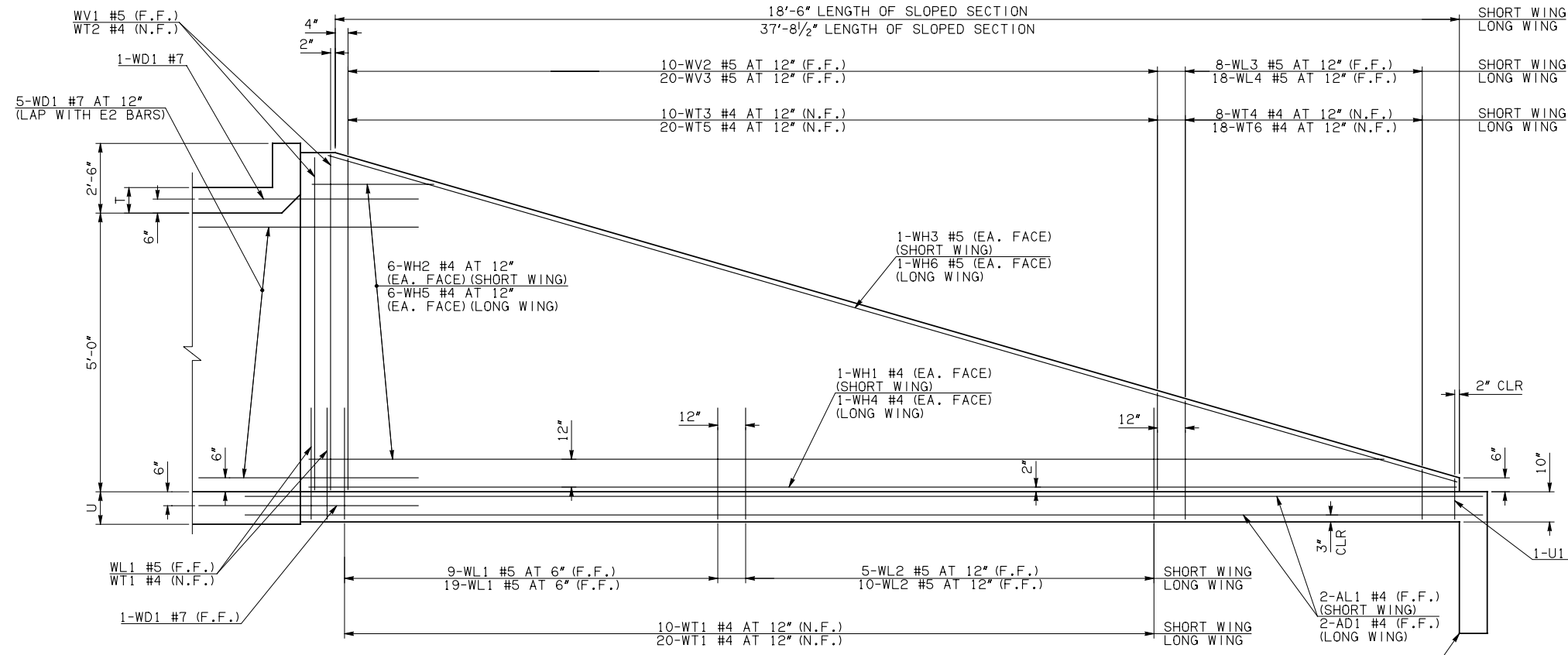
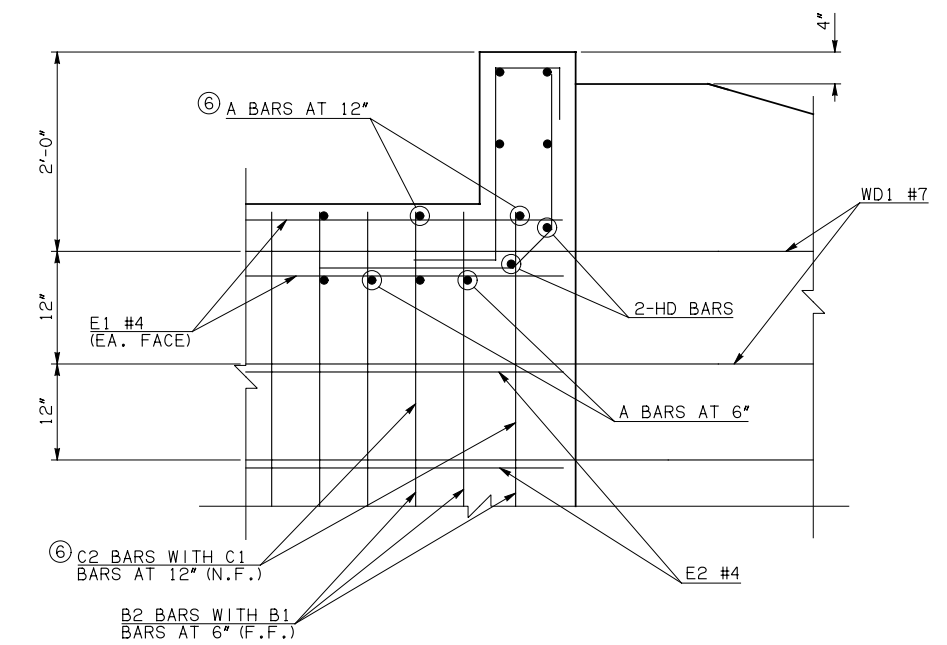


| DESCRIPTION | REVISIONS | DATE |
|-------------|-----------|------|
| | | |



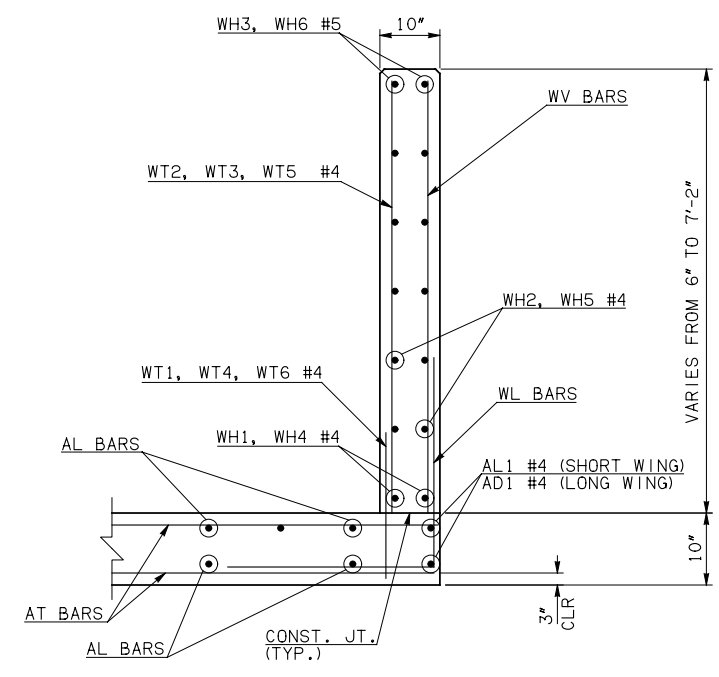
NOTE: F.F. = FAR FACE
N.F. = NEAR FACE

WING ELEVATION

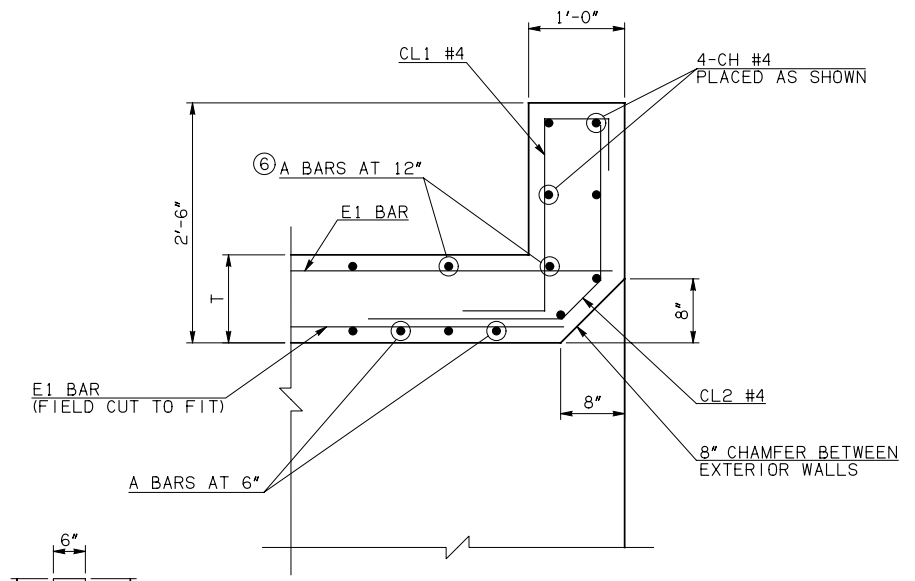
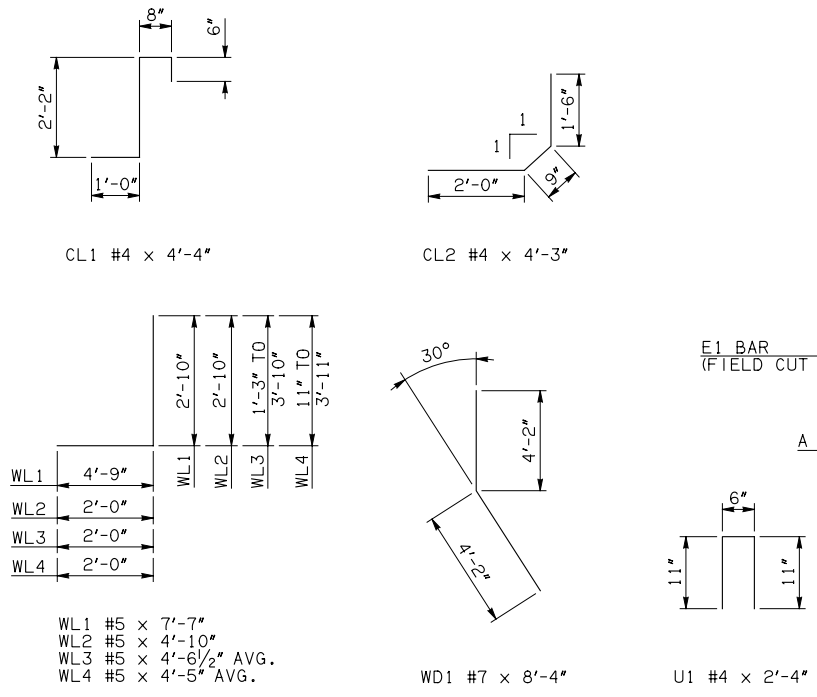


② HEADWALL DETAIL AT EXTERIOR WALL

| WINGWALL BAR LIST (LONG AND SHORT WING INCLUDED) | | | | | |
|---|------|------|------|----------------|------------------|
| MARK | SIZE | QTY. | FORM | LENGTH | REMARKS |
| WD1 | #7 | 14 | BNT | 8'-4" | |
| WH1 | #4 | 2 | STR | 19'-4" | |
| WH2 | #4 | 12 | STR | 10'-1/2" AVG. | 3'-2" TO 17'-1" |
| WH3 | #5 | 2 | STR | 19'-5" | |
| WH4 | #4 | 2 | STR | 38'-6" | |
| WH5 | #4 | 12 | STR | 19'-9" AVG. | 5'-7" TO 33'-11" |
| WH6 | #5 | 2 | STR | 38'-1" | |
| WL1 | #5 | 32 | BNT | 7'-7" | |
| WL2 | #5 | 15 | BNT | 4'-10" | |
| WL3 | #5 | 8 | BNT | 4'-6 1/2" AVG. | 3'-3" TO 5'-10" |
| WL4 | #5 | 18 | BNT | 4'-5" AVG. | 2'-11" TO 5'-11" |
| WT1 | #4 | 35 | STR | 2'-10" | |
| WT2 | #4 | 5 | STR | 7'-0" | |
| WT3 | #4 | 10 | STR | 5'-2 1/2" AVG. | 3'-7" TO 6'-10" |
| WT4 | #4 | 8 | STR | 2'-6 1/2" AVG. | 1'-3" TO 3'-10" |
| WT5 | #4 | 20 | STR | 5'-2 1/2" AVG. | 3'-6" TO 6'-11" |
| WT6 | #4 | 18 | STR | 2'-5" AVG. | 11" TO 3'-11" |
| WV1 | #5 | 4 | STR | 7'-0" | |
| WV2 | #5 | 10 | STR | 5'-2 1/2" AVG. | 3'-7" TO 6'-10" |
| WV3 | #5 | 20 | STR | 5'-2 1/2" AVG. | 3'-6" TO 6'-11" |
| U1 | #4 | 2 | BNT | 2'-4" | |



TYPICAL SECTION THRU WING



② HEADWALL DETAIL AT MIDSPAN

DIMENSION SHOWN NORMAL TO HEADWALL
NOTES:
① QUANTITY SHOWN REPRESENTS TWO SETS.
② FOR FURTHER INFORMATION REGARDING END SECTION BARS A, B, C, E1, AND E2, REFER TO RCB CULVERT - BARREL DETAILS.
③ 10', 12', AND 14' SPANS ONLY

| HEADWALL BAR LIST | | | | | | | | | | | | | | | | | | | |
|--------------------|------|---------|------|--------|---------|------|--------|---------|------|--------|----------|------|--------|----------|------|--------|----------|------|--------|
| ONE HEADWALL SHOWN | | | | | | | | | | | | | | | | | | | |
| MARK | FORM | 5' SPAN | | | 6' SPAN | | | 8' SPAN | | | 10' SPAN | | | 12' SPAN | | | 14' SPAN | | |
| | | SIZE | QTY. | LENGTH | SIZE | QTY. | LENGTH | SIZE | QTY. | LENGTH | SIZE | QTY. | LENGTH | SIZE | QTY. | LENGTH | SIZE | QTY. | LENGTH |
| CH | STR | #4 | 4 | 7'-6" | #4 | 4 | 8'-6" | #4 | 4 | 11'-4" | #4 | 4 | 13'-8" | #4 | 4 | 16'-2" | #4 | 4 | 18'-8" |
| CL1 | BNT | #4 | 8 | 4'-4" | #4 | 9 | 4'-4" | #4 | 12 | 4'-4" | #4 | 14 | 4'-4" | #4 | 16 | 4'-4" | #4 | 19 | 4'-4" |
| CL2 | BNT | #4 | 8 | 4'-3" | #4 | 9 | 4'-3" | #4 | 12 | 4'-3" | #4 | 14 | 4'-3" | #4 | 16 | 4'-3" | #4 | 19 | 4'-3" |
| HD | STR | #6 | 2 | 7'-6" | #6 | 2 | 8'-6" | #6 | 2 | 11'-4" | #8 | 2 | 13'-8" | #8 | 2 | 16'-2" | #8 | 2 | 18'-8" |

APPROVED BY BRIDGE ENGINEER *Robert J. Nisch* DATE 4/09/09

OKLAHOMA DEPT. OF TRANSPORTATION
BRIDGE STANDARD (ENGLISH)
RCB CULVERTS - END SECTION DETAILS
SINGLE CELL - 5'-0" HEIGHT - 30°
SHEET NO. 3 OF 3

1999 SPECIFICATIONS RCB-E1-H5-30-3 OOE B-671E