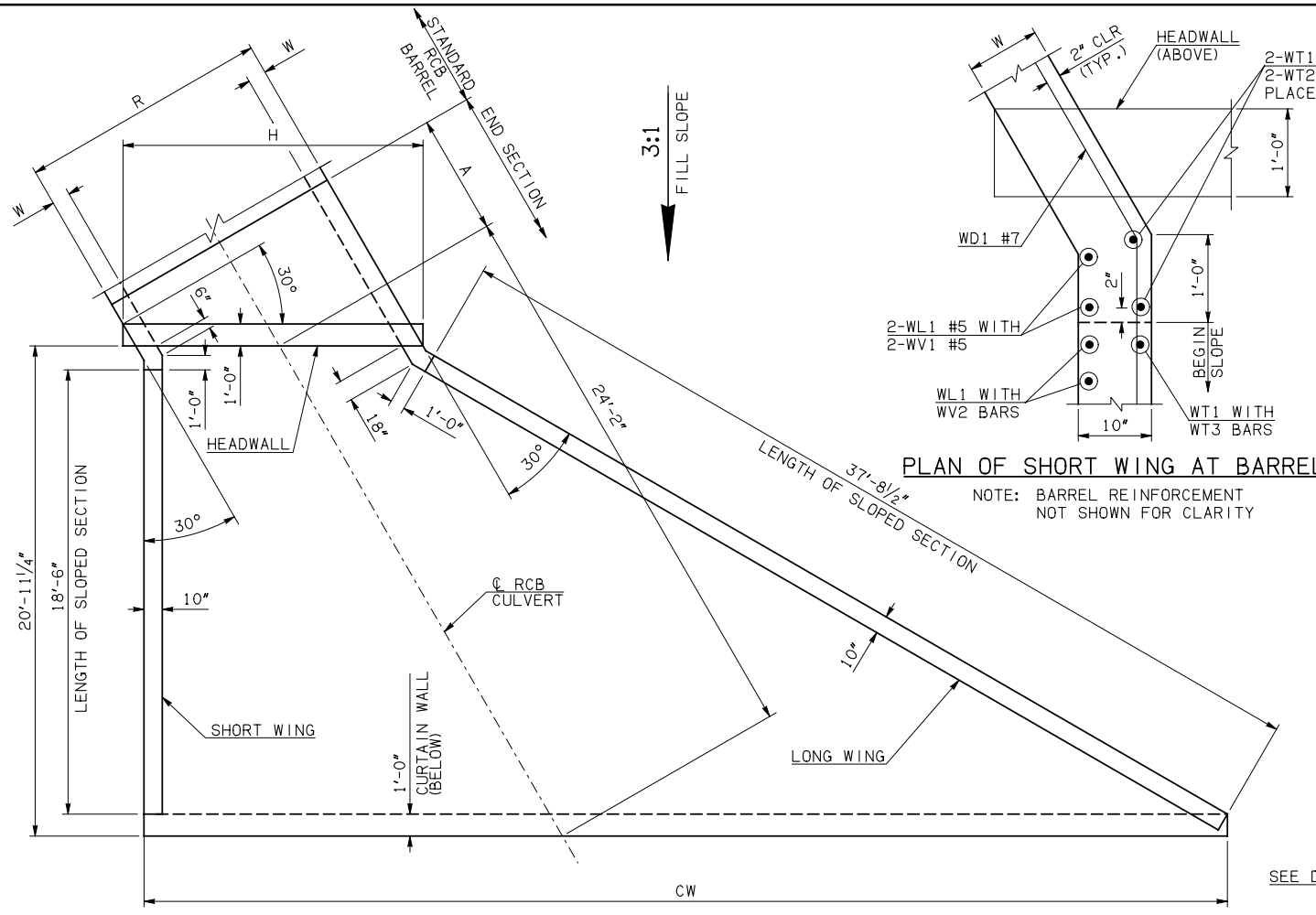


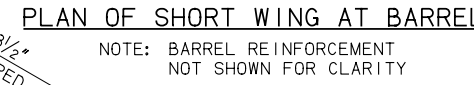
DESCRIPTION	REVISIONS	DATE



END SECTION PLAN

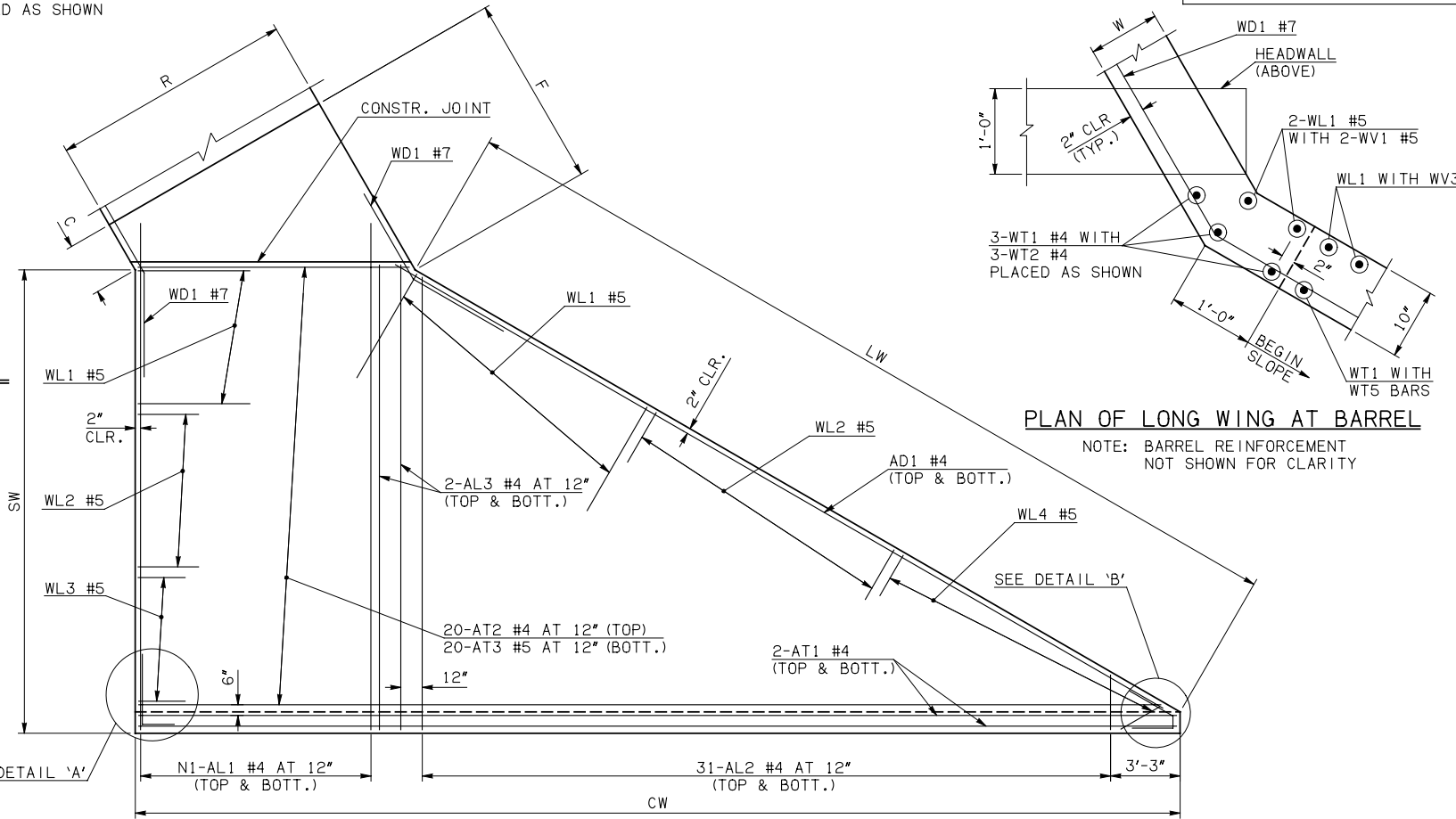
NOTE: SEE END SECTION DETAILS SHEET NO. 2 OF 3 FOR VARIABLE REINFORCING QUANTITIES.

END SECTION VARIABLE DIMENSIONS													
SPAN	W	A	B	C	CW	D	E	F	G	H	LW	SW	
5'	8"	4'-0"	2'-2"	2'-6 1/2"	41'-0 1/2"	3'-0 3/4"	5'-10"	6'-5 1/4"	6'-11 1/4"	7'-10 3/4"	38'-9 3/4"	6'-4"	20'-7 1/4"
6'	7"	5'-0"	2'-11 1/4"	3'-1 1/4"	42'-2 1/2"	3'-9 1/4"	7'-0 3/4"	7'-7"	8'-2 3/4"	8'-10 1/4"	38'-11 3/4"	7'-2"	20'-9 1/4"
8'	10"	5'-0"	2'-2 1/2"	2'-11 1/2"	44'-6 1/4"	3'-2 1/4"	7'-9 1/2"	8'-7"	8'-9 3/4"	11'-8 3/4"	38'-5 3/4"	9'-8"	20'-3 1/4"
10'	10"	6'-0"	2'-7 1/2"	3'-4 3/4"	46'-9 3/4"	3'-7 1/4"	9'-4 1/2"	10'-2"	10'-4 3/4"	14'-0 1/2"	38'-5 3/4"	11'-8"	20'-3 1/4"
12'	11"	6'-0"	2'-0"	2'-11 1/2"	49'-1 1/2"	3'-0 1/2"	10'-0"	10'-10 1/2"	10'-11 1/2"	16'-6 1/2"	38'-3 3/4"	13'-10"	20'-1 1/4"
14'	12"	7'-0"	2'-4 1/2"	3'-6 1/4"	51'-5 1/4"	3'-5 1/2"	11'-7 1/2"	12'-7 1/4"	12'-6 1/2"	19'-0 3/4"	38'-1 3/4"	16'-0"	19'-11 1/4"



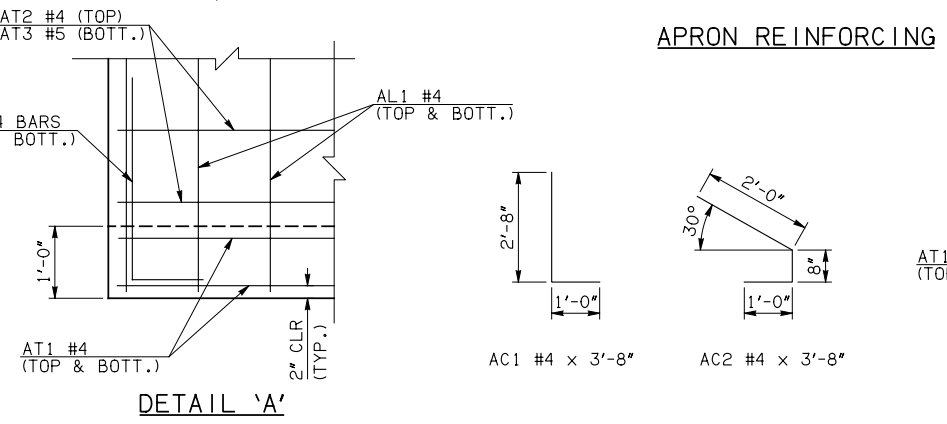
PLAN OF SHORT WING AT BARREL

NOTE: BARREL REINFORCEMENT NOT SHOWN FOR CLARITY

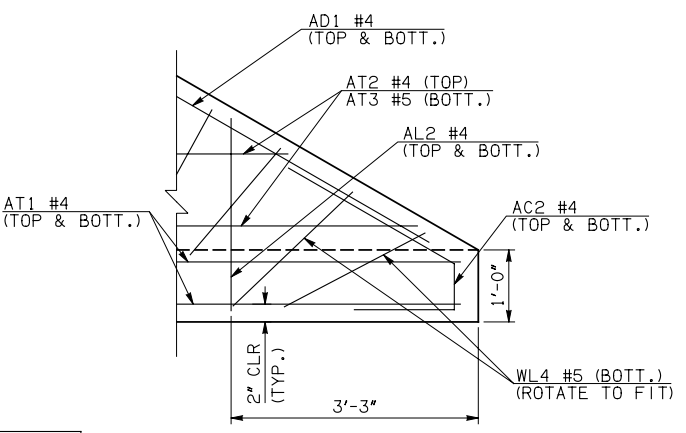


PLAN OF LONG WING AT BARREL

NOTE: BARREL REINFORCEMENT NOT SHOWN FOR CLARITY



DETAIL 'A'



DETAIL 'B'

APRON BAR LIST

MARK	SIZE	FORM	ONE APRON SHOWN															
			5' SPAN		6' SPAN		8' SPAN		10' SPAN		12' SPAN		14' SPAN					
QTY.	LENGTH	REMARKS	QTY.	LENGTH	REMARKS	QTY.	LENGTH	REMARKS	QTY.	LENGTH	REMARKS	QTY.	LENGTH	REMARKS	QTY.	LENGTH	REMARKS	
AC1	#4	BNT	2	3'-8"		2	3'-8"		2	3'-8"		2	3'-8"		2	3'-8"		
AC2	#4	BNT	2	3'-8"		2	3'-8"		2	3'-8"		2	3'-8"		2	3'-8"		
AD1	#4	STR	2	39'-6"		2	39'-6"		2	39'-6"		2	39'-6"		2	39'-6"		
AL1	#4	STR	12	22'-9"		14	22'-9"		20	22'-9"		24	22'-9"		34	22'-9"		
AL2	#4	STR	62	11'-2" AVG.	2'-6" TO 19'-10"	62	11'-2" AVG.	2'-6" TO 19'-10"	62	11'-2" AVG.	2'-6" TO 19'-10"	62	11'-2" AVG.	2'-6" TO 19'-10"	62	11'-2" AVG.	2'-6" TO 19'-10"	
AL3	#4	STR	4	20'-9"		4	20'-9"		4	20'-9"		4	20'-9"		4	20'-9"		
AT1	#4	STR	4	40'-8"		4	41'-10"		4	44'-2"		4	46'-5"		4	48'-9"		
AT2	#4	STR	20	23'-5 1/2" AVG.	7'-0" TO 39'-11"	20	24'-7 1/2" AVG.	8'-2" TO 41'-1"	20	26'-11 1/2" AVG.	10'-6" TO 43'-5"	20	29'-3" AVG.	12'-10" TO 45'-8"	20	31'-6 1/2" AVG.	15'-1" TO 48'-0"	
AT3	#5	STR	20	23'-5 1/2" AVG.	7'-0" TO 39'-11"	20	24'-7 1/2" AVG.	8'-2" TO 41'-1"	20	26'-11 1/2" AVG.	10'-6" TO 43'-5"	20	29'-3" AVG.	12'-10" TO 45'-8"	20	31'-6 1/2" AVG.	15'-1" TO 48'-0"	

① QUANTITY SHOWN REPRESENTS TWO SETS.

APPROVED BY BRIDGE ENGINEER *Robert J. Nussler* DATE 4/09/09

**OKLAHOMA DEPT. OF TRANSPORTATION**  
**BRIDGE STANDARD (ENGLISH)**  
 RCB CULVERTS - END SECTION DETAILS  
 SINGLE CELL - 5'-0" HEIGHT - 30°  
 SHEET NO. 1 OF 3

1999 SPECIFICATIONS | RCB-E1-H5-30-1 | OOE | B-669E