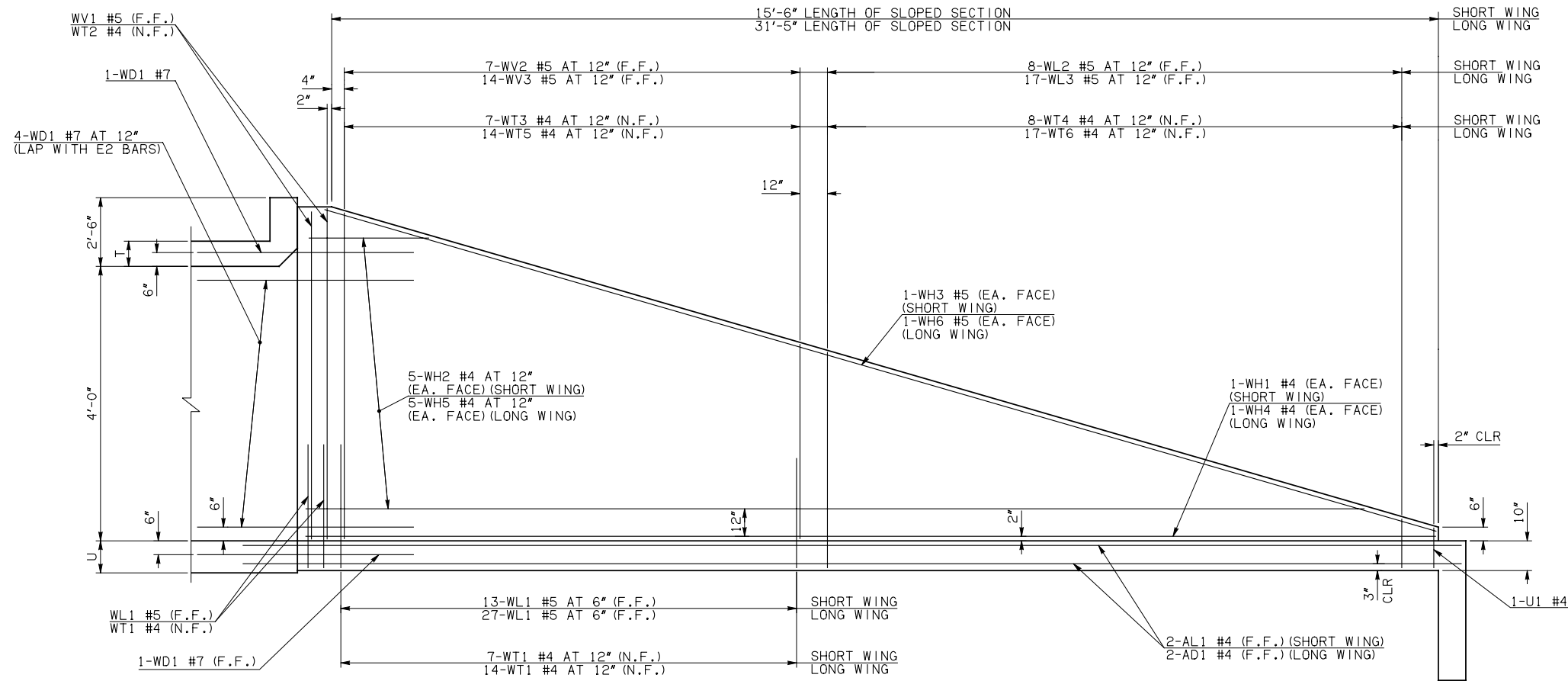


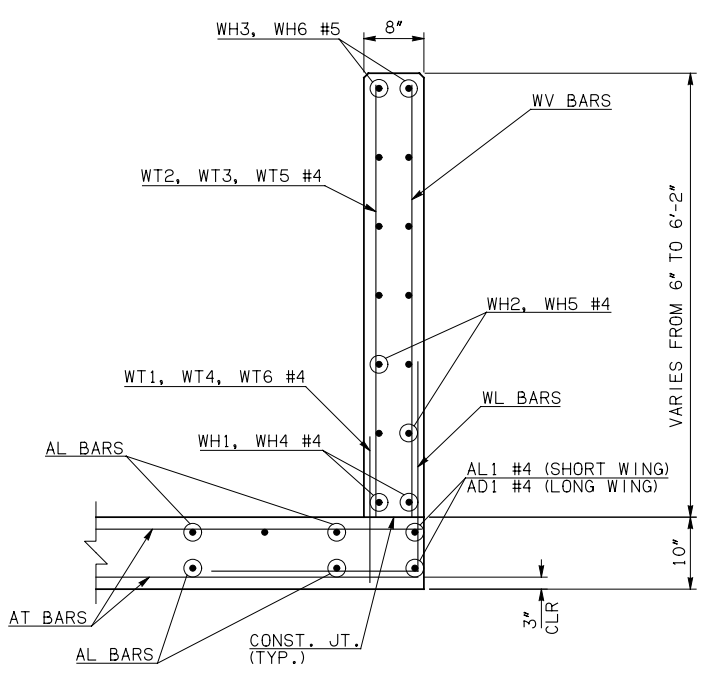
DESCRIPTION	REVISIONS	DATE



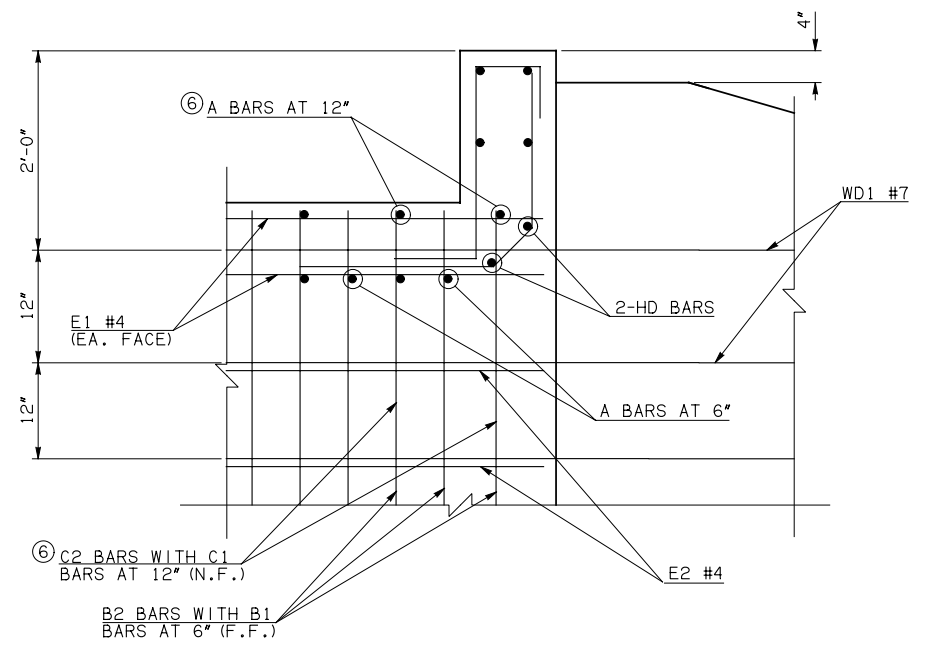
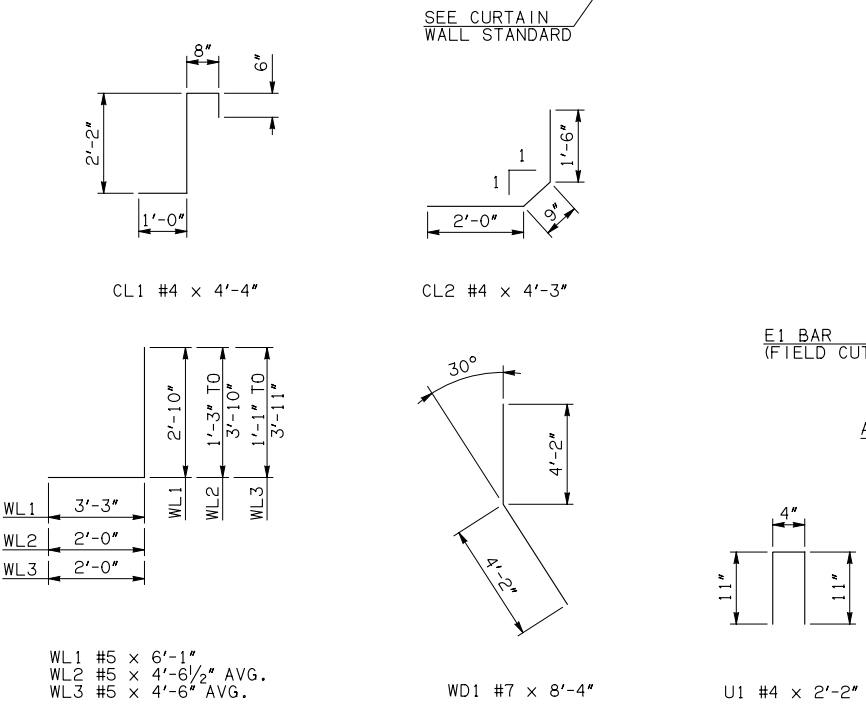
WING ELEVATION

NOTE: F.F. = FAR FACE
N.F. = NEAR FACE

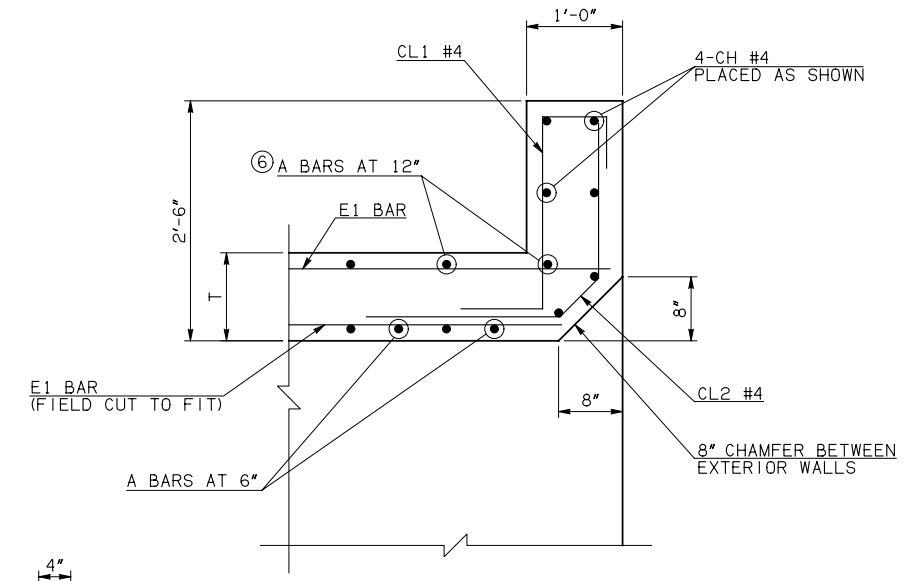
WINGWALL BAR LIST (LONG AND SHORT WING INCLUDED)					
MARK	SIZE	QTY.	FORM	LENGTH	REMARKS
WD1	#7	12	BNT	8'-4"	
WH1	#4	2	STR	16'-4"	
WH2	#4	10	STR	8'-8" AVG.	3'-2" TO 14'-2"
WH3	#5	2	STR	16'-3"	
WH4	#4	2	STR	32'-3"	
WH5	#4	10	STR	16'-7 1/2" AVG.	5'-6" TO 27'-9"
WH6	#5	2	STR	31'-9"	
WL1	#5	44	BNT	6'-1"	
WL2	#5	8	BNT	4'-6 1/2" AVG.	3'-3" TO 5'-10"
WL3	#5	17	BNT	4'-6" AVG.	3'-1" TO 5'-11"
WT1	#4	25	STR	2'-10"	
WT2	#4	5	STR	6'-0"	
WT3	#4	7	STR	4'-9" AVG.	3'-8" TO 5'-10"
WT4	#4	8	STR	2'-6 1/2" AVG.	1'-3" TO 3'-10"
WT5	#4	14	STR	4'-9" AVG.	3'-7" TO 5'-11"
WT6	#4	17	STR	2'-6" AVG.	1'-1" TO 3'-11"
WV1	#5	4	STR	6'-0"	
WV2	#5	7	STR	4'-9" AVG.	3'-8" TO 5'-10"
WV3	#5	14	STR	4'-9" AVG.	3'-7" TO 5'-11"
U1	#4	2	BNT	2'-2"	



TYPICAL SECTION THRU WING



HEADWALL DETAIL AT EXTERIOR WALL



HEADWALL DETAIL AT MIDSPAN

DIMENSION SHOWN NORMAL TO HEADWALL
NOTES:
① QUANTITY SHOWN REPRESENTS TWO SETS.
② FOR FURTHER INFORMATION REGARDING END SECTION BARS A, B, C, E1, AND E2, REFER TO RCB CULVERT - BARREL DETAILS.
③ 10' AND 12' SPANS ONLY

HEADWALL BAR LIST																			
ONE HEADWALL SHOWN																			
MARK	FORM	4' SPAN			5' SPAN			6' SPAN			8' SPAN			10' SPAN			12' SPAN		
		SIZE	QTY.	LENGTH	SIZE	QTY.	LENGTH	SIZE	QTY.	LENGTH	SIZE	QTY.	LENGTH	SIZE	QTY.	LENGTH	SIZE	QTY.	LENGTH
CH	STR	#4	4	6'-4"	#4	4	7'-4"	#4	4	8'-6"	#4	4	11'-4"	#4	4	13'-8"	#4	4	16'-2"
CL1	BNT	#4	7	4'-4"	#4	8	4'-4"	#4	9	4'-4"	#4	12	4'-4"	#4	14	4'-4"	#4	16	4'-4"
CL2	BNT	#4	7	4'-3"	#4	8	4'-3"	#4	9	4'-3"	#4	12	4'-3"	#4	14	4'-3"	#4	16	4'-3"
HD	STR	#6	2	6'-4"	#6	2	7'-4"	#6	2	8'-6"	#6	2	11'-4"	#8	2	13'-8"	#8	2	16'-2"

APPROVED BY BRIDGE ENGINEER *Robert J. Muehl* DATE 4/09/09

OKLAHOMA DEPT. OF TRANSPORTATION
BRIDGE STANDARD (ENGLISH)
RCB CULVERTS - END SECTION DETAILS
SINGLE CELL - 4'-0" HEIGHT - 30°
SHEET NO. 3 OF 3

1999 SPECIFICATIONS RCB-E1-H4-30-3 OOE B-668E