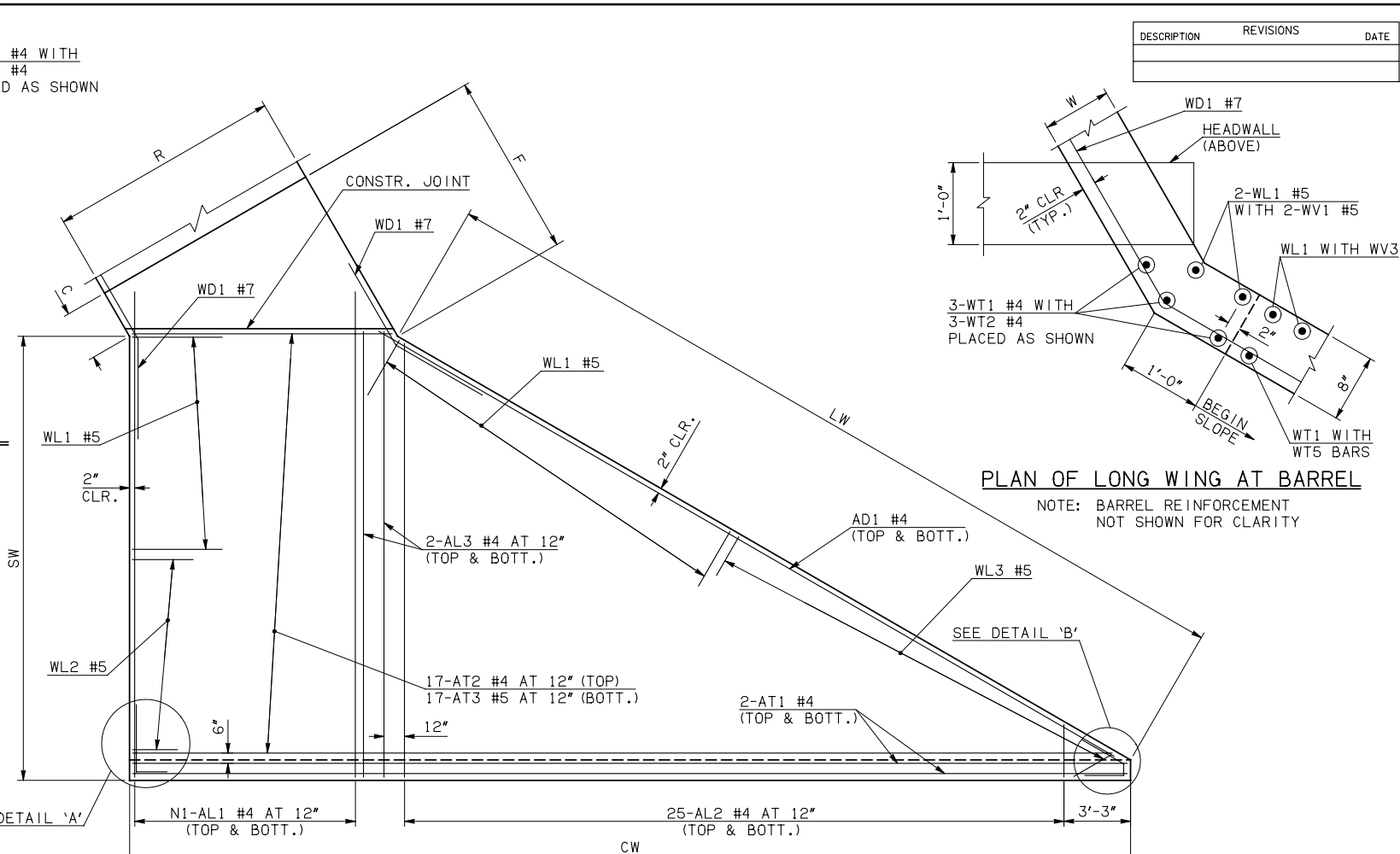
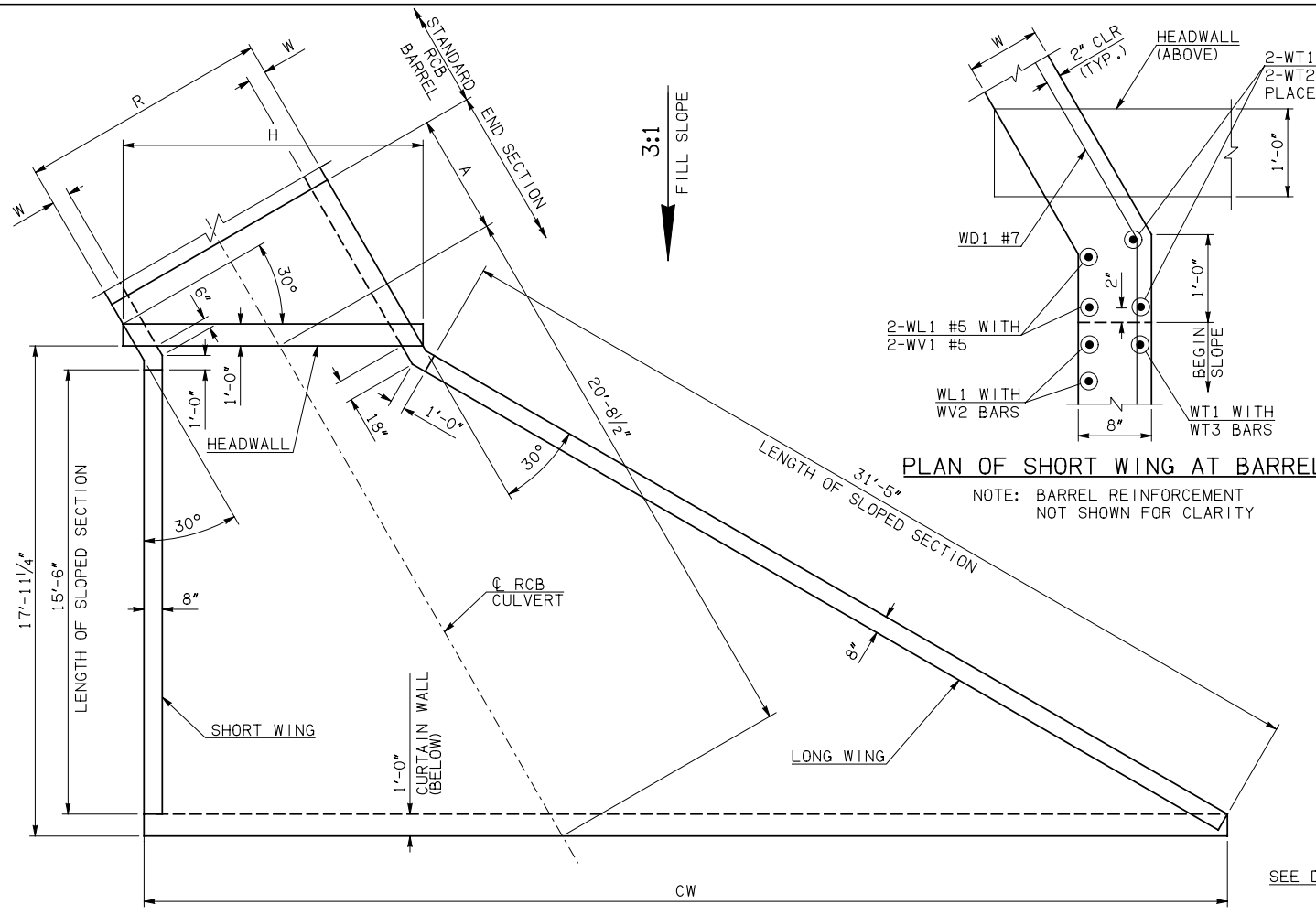


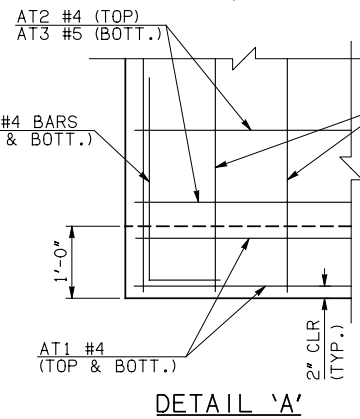
DESCRIPTION	REVISIONS	DATE



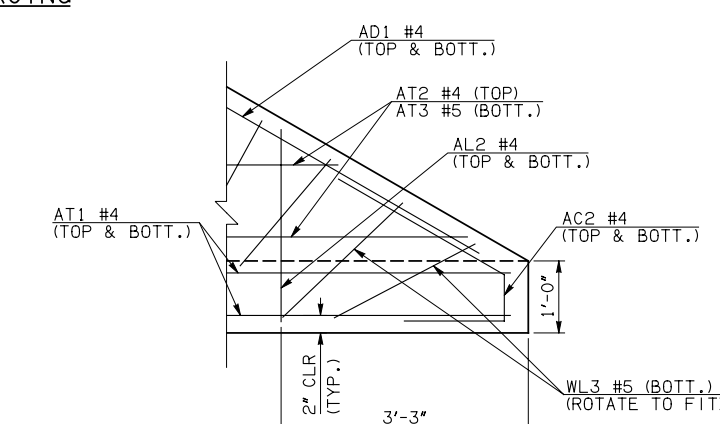
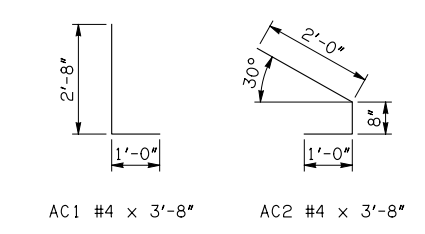
END SECTION PLAN

NOTE: SEE END SECTION DETAILS SHEET NO. 2 OF 3 FOR VARIABLE REINFORCING QUANTITIES.

END SECTION VARIABLE DIMENSIONS													
SPAN	W	A	B	C	CW	D	E	F	G	H	LW	R	SW
4'	8"	4'-0"	2'-5 1/2"	3'-2"	34'-2 1/4"	3'-4 1/4"	5'-6 1/2"	6'-5 3/4"	6'-7 3/4"	6'-8 3/4"	32'-3"	5'-4"	17'-3 3/4"
5'	7"	4'-0"	2'-2 3/4"	2'-8 3/4"	35'-4 1/4"	3'-0 3/4"	5'-9 1/4"	6'-7 1/2"	6'-11 1/4"	7'-8 1/2"	32'-5"	6'-2"	17'-5 3/4"
6'	7"	5'-0"	2'-11 1/4"	3'-5 1/4"	36'-6"	3'-9 1/4"	7'-0 3/4"	7'-11"	8'-2 3/4"	8'-10 1/4"	32'-5"	7'-2"	17'-5 3/4"
8'	10"	5'-0"	2'-2 1/2"	3'-3 1/2"	38'-9 3/4"	3'-2 1/4"	7'-9 1/2"	8'-11"	8'-9 3/4"	11'-8 3/4"	31'-11"	9'-8"	16'-11 3/4"
10'	10"	6'-0"	2'-7 1/2"	3'-8 3/4"	41'-1 1/2"	3'-7 1/4"	9'-4 1/2"	10'-6"	10'-4 3/4"	14'-0 1/2"	31'-11"	11'-8"	16'-11 3/4"
12'	11"	6'-0"	2'-0"	3'-3 1/2"	43'-5 1/4"	3'-0 1/2"	10'-0"	10'-2 1/2"	10'-11 1/2"	16'-6 1/2"	31'-9"	13'-10"	16'-9 3/4"



APRON REINFORCING



DETAIL 'B'

APRON BAR LIST

ONE APRON SHOWN																				
MARK	SIZE	FORM	4' SPAN			5' SPAN			6' SPAN			8' SPAN			10' SPAN			12' SPAN		
			QTY.	LENGTH	REMARKS	QTY.	LENGTH	REMARKS	QTY.	LENGTH	REMARKS	QTY.	LENGTH	REMARKS	QTY.	LENGTH	REMARKS	QTY.	LENGTH	REMARKS
AC1	#4	BNT	2	3'-8"		2	3'-8"		2	3'-8"		2	3'-8"		2	3'-8"		2	3'-8"	
AC2	#4	BNT	2	3'-8"		2	3'-8"		2	3'-8"		2	3'-8"		2	3'-8"		2	3'-8"	
AD1	#4	STR	2	33'-6"		2	33'-6"		2	33'-6"		2	33'-6"		2	33'-6"		2	33'-6"	
AL1	#4	STR	10	19'-9"		12	19'-9"		14	19'-9"		20	19'-9"		24	19'-9"		28	19'-9"	
AL2	#4	STR	50	9'-5" AVG.	2'-6" TO 16'-4"	50	9'-5" AVG.	2'-6" TO 16'-4"	50	9'-5" AVG.	2'-6" TO 16'-4"	50	9'-5" AVG.	2'-6" TO 16'-4"	50	9'-5" AVG.	2'-6" TO 16'-4"	50	9'-5" AVG.	2'-6" TO 16'-4"
AL3	#4	STR	4	17'-9"		4	17'-9"		4	17'-9"		4	17'-9"		4	17'-9"		4	17'-9"	
AT1	#4	STR	4	33'-10"		4	35'-0"		4	36'-2"		4	38'-5"		4	40'-9"		4	43'-1"	
AT2	#4	STR	17	19'-2 1/2" AVG.	5'-4" TO 33'-1"	17	20'-4 1/2" AVG.	6'-6" TO 34'-3"	17	21'-6 1/2" AVG.	7'-8" TO 35'-5"	17	23'-10" AVG.	10'-0" TO 37'-8"	17	26'-2" AVG.	12'-4" TO 40'-0"	17	28'-5 1/2" AVG.	14'-7" TO 42'-4"
AT3	#5	STR	17	19'-2 1/2" AVG.	5'-4" TO 33'-1"	17	20'-4 1/2" AVG.	6'-6" TO 34'-3"	17	21'-6 1/2" AVG.	7'-8" TO 35'-5"	17	23'-10" AVG.	10'-0" TO 37'-8"	17	26'-2" AVG.	12'-4" TO 40'-0"	17	28'-5 1/2" AVG.	14'-7" TO 42'-4"

① QUANTITY SHOWN REPRESENTS TWO SETS.

APPROVED BY BRIDGE ENGINEER *Robert J. Muech* DATE 4/09/09

OKLAHOMA DEPT. OF TRANSPORTATION
BRIDGE STANDARD (ENGLISH)
 RCB CULVERTS - END SECTION DETAILS
 SINGLE CELL - 4'-0" HEIGHT - 30°
 SHEET NO. 1 OF 3

1999 SPECIFICATIONS | RCB-E1-H4-30-1 | OOE | B-666E